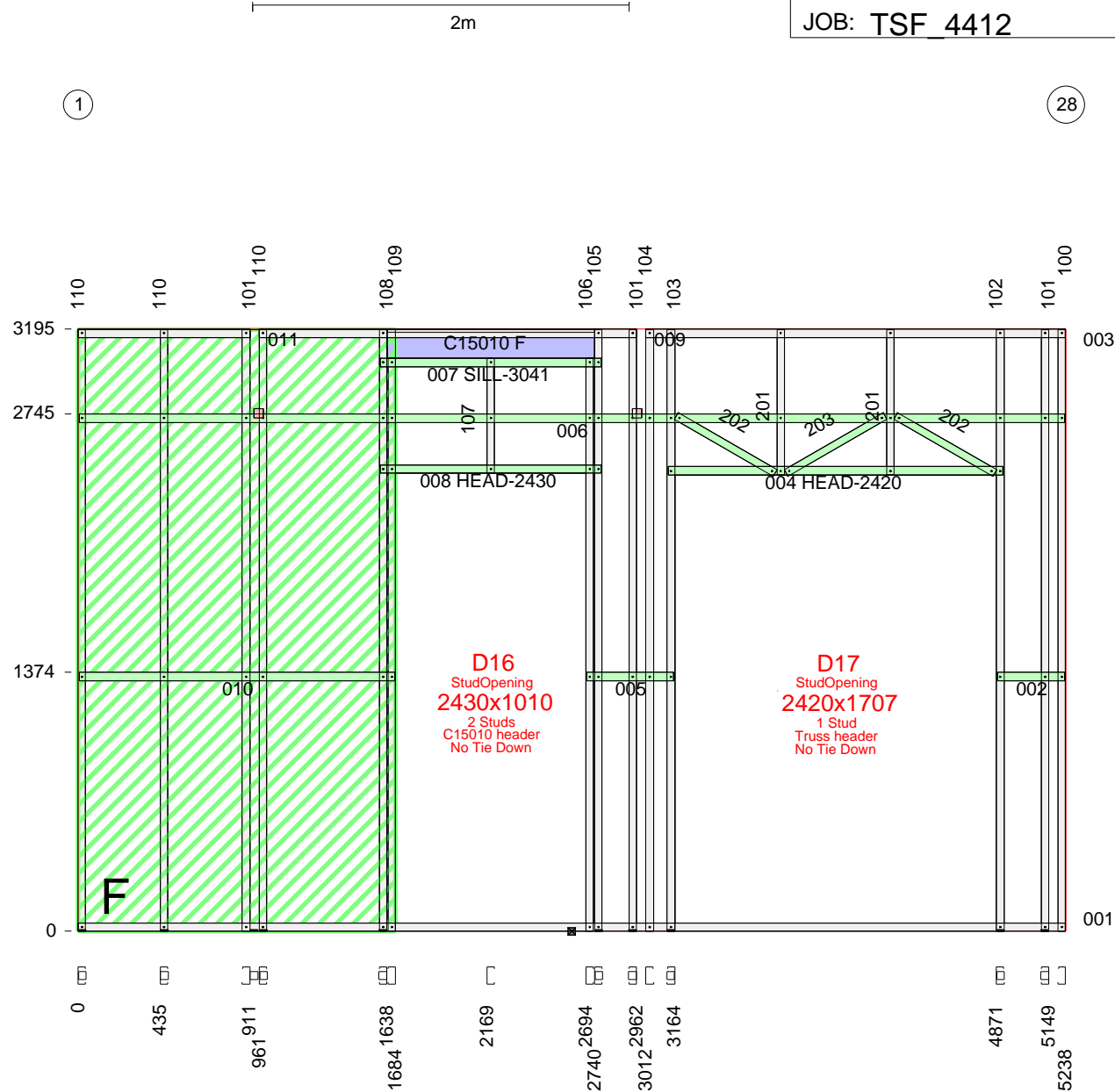


DESCRIPTION	Usage	No.	Length	Mat.	Qty
U904475G550	BOTPLATE	001	5238	0.75	1
U904475G550	NOGGING	002	357	0.75	1
U904475G550	TOPPLATE	003	2226	0.75	1
U904475G550	HEAD	004	1777	0.75	1
U904475G550	NOGGING	005	460	0.75	1
U904475G550	NOGGING	006	5228	0.75	1
U904475G550	SILL	007	1172	0.75	1
U904475G550	HEAD	008	1172	0.75	1
U904475G550	TOPPLATE	009	2001	0.75	1
U904475G550	NOGGING	010	1674	0.75	1
U904475G550	TOPPLATE	011	911	0.75	1
C9075ra	STUD	100	3191	0.75	1
C9075ra	STUD	101	3233	0.75	3
C9075ra	STUD	102	3233	0.75	1
C9075ra	STUD	103	3233	0.75	1
C9075ra	STUD	104	3191	0.75	1
C9075ra	STUD	105	3233	0.75	1
C9075ra	STUD	106	3037	0.75	1
C9075ra	STUD	107	607	0.75	1
C9075ra	STUD	108	3233	0.75	1
C9075ra	STUD	109	3037	0.75	1
C9075ra	STUD	110	3233	0.75	3
C9075ra	WEB	201	771	0.75	2
C9075ra	WEB	202	605	0.75	2
C9075ra	WEB	203	605	0.75	1
Hardibrace_5mm	PanelBrace	N/A	3191	5	1
C15010	HEADER	N/A	1098	1	1
Washer40x40x5	HOLDDOWN	N/A		5	10
WALLTITE	SCREW	N/A	-	-	158

Length crib: 2
Floor RL: 0
INTERNAL wall



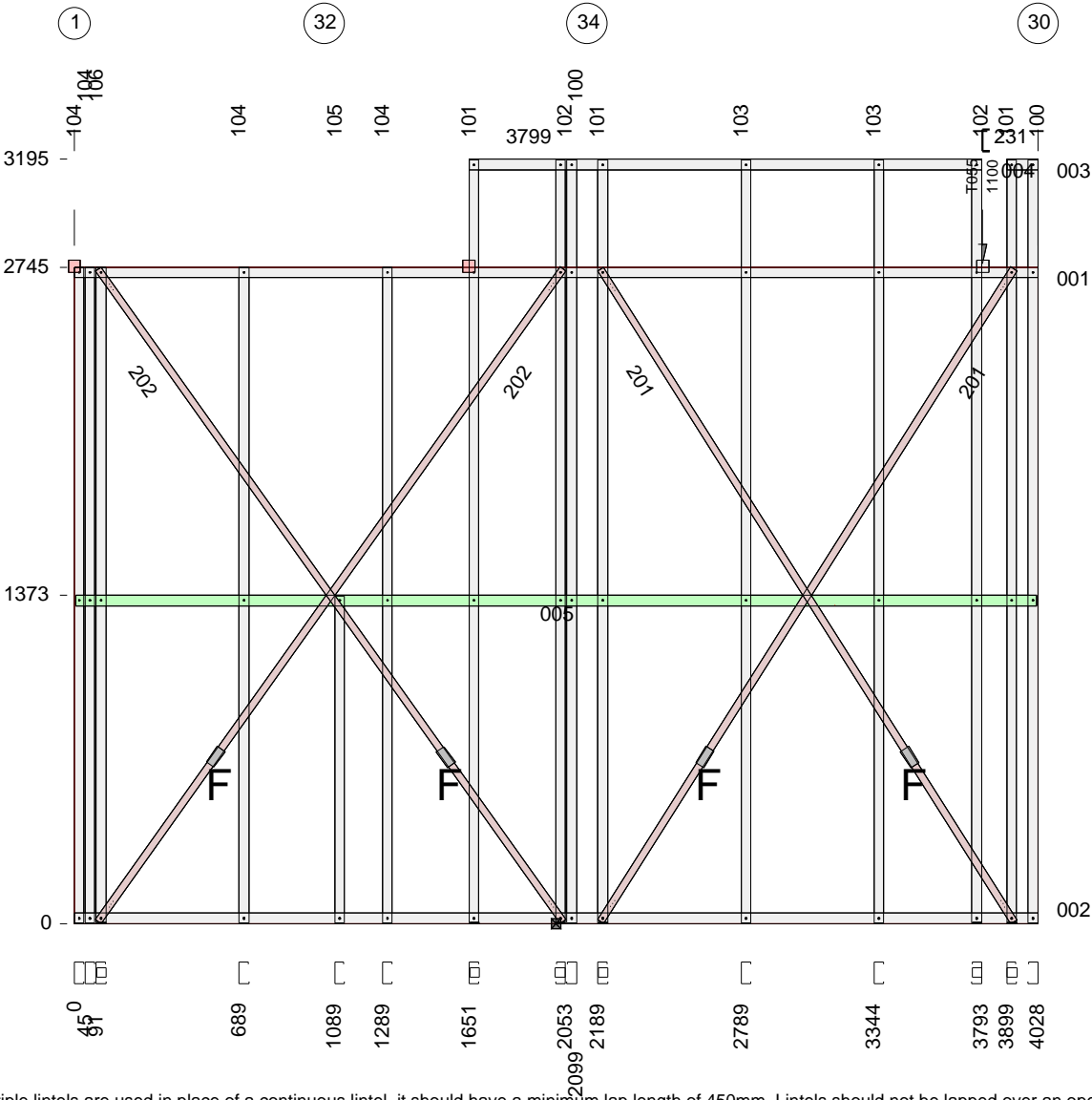
All dimensions to back of section. Where multiple lintels are used in place of a continuous lintel, it should have a minimum lap length of 450mm. Lintels should not be lapped over an opening.

ASSEMBLY DETAILS	OPENING DIMENSIONS (steel to steel)				PACKING DETAILS		LENGTH	MAX. HEIGHT
	ID	MANUF.	CAT NO.	UNIT DIM.	LEFT SIDE	RIGHT SIDE	5238	3195
ASSEMBLED: FABRICATOR: TRUE STEEL FRAMES CUSTOMER: BERT FARINA CONSTRUCTION CLIENT REF: 4 REDWOOD ST, ROSTREVOR	D16	STUDOPEN	StudOpening	2430x1010			DETAILER	DETAILED
	D17	STUDOPEN	StudOpening	2420x1707			VANTAGE_DS	21-10-2019
							WEIGHT	SCALE
							116	1:35

DESCRIPTION	Usage	No.	Length	Mat.	Qty
U904475G550	TOPPLATE	001	4028	0.75	1
U904475G550	BOTPLATE	002	4028	0.75	1
U904475G550	TOPPLATE	003	129	0.75	1
U904475G550	TOPPLATE	004	2142	0.75	1
U904475G550	NOGGING	005	4018	0.75	1
C9075ra	STUD	100	3191	0.75	2
C9075ra	STUD	101	3233	0.75	3
C9075ra	STUD	102	3233	0.75	2
C9075ra	STUD	103	3191	0.75	2
C9075ra	STUD	104	2741	0.75	4
C9075ra	STUD	105	1370	0.75	1
C9075ra	STUD	106	2783	0.75	1
BRA-1.0x30-550	Brace	201	3230	1.0	2
BRA-1.0x30-550	Brace	202	3349	1.0	2
Washer40x40x5	HOLDDOWN	N/A		5	6
TENSIONER_SET	Tensnr	N/A	0	N/A	4
SCREW-M6-1PX18-TEK	SCREW	N/A	-	-	24
WALLTITE	SCREW	N/A	-	-	106

Length crib: 2
Floor RL: 0
INTERNAL wall

Screws at each end of BRA-1.0x30-550 = 3

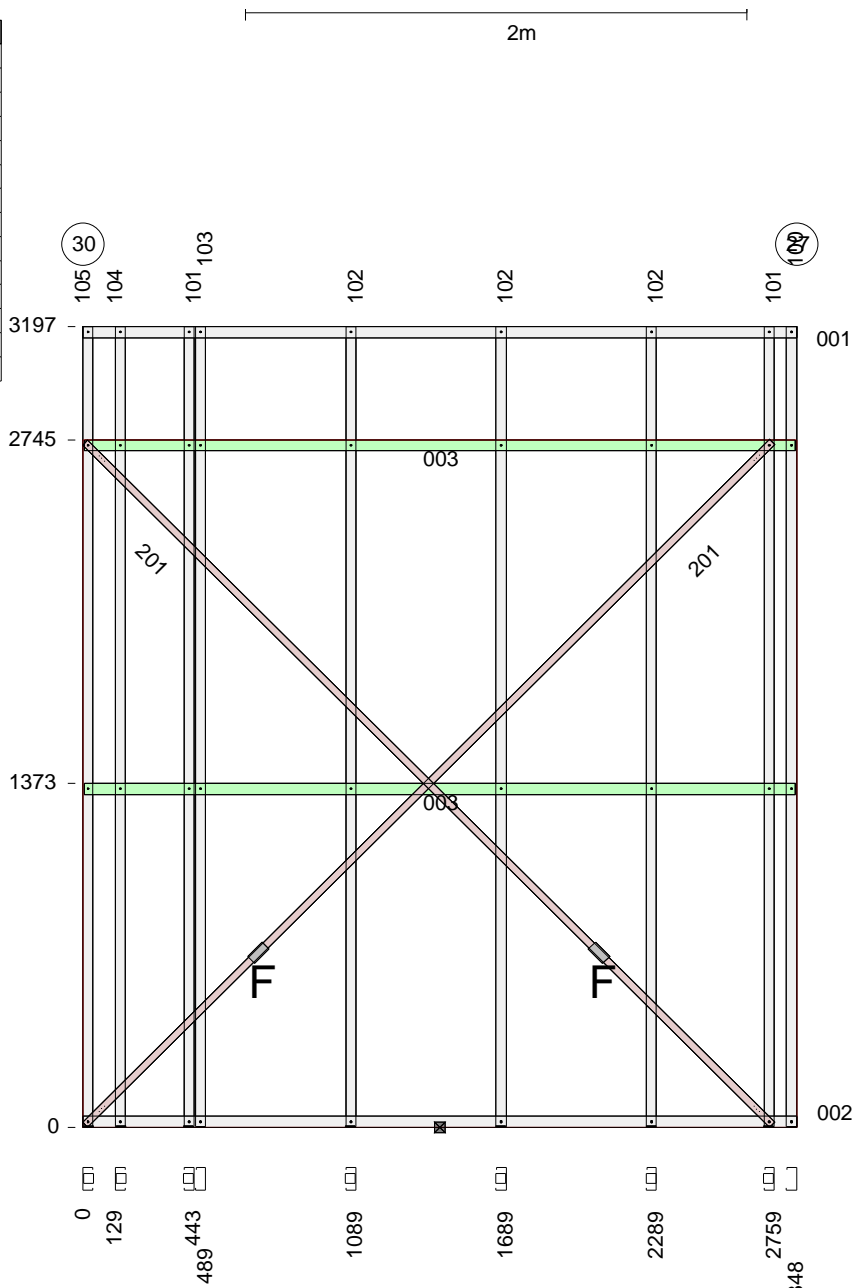


All dimensions to back of section. Where multiple lintels are used in place of a continuous lintel, it should have a minimum lap length of 450mm. Lintels should not be lapped over an opening.

ASSEMBLY DETAILS	OPENING DIMENSIONS (steel to steel)					PACKING DETAILS		LENGTH	MAX. HEIGHT
	ID	HEIGHT	WIDTH	HEAD	SILL	LEFT SIDE	RIGHT SIDE	4028	2745
ASSEMBLED:								DETAILER	DETAILED
FABRICATOR: TRUE STEEL FRAMES								VANTAGE_DS	21-10-2019
CUSTOMER: BERT FARINA CONSTRUCTION								WEIGHT	SCALE
CLIENT REF: 4 REDWOOD ST, ROSTREVOR								67	1:30

DESCRIPTION	Usage	No.	Length	Mat.	Qty
U904475G550	TOPPLATE	001	2848	0.75	1
U904475G550	BOTPLATE	002	2848	0.75	1
U904475G550	NOGGING	003	2838	0.75	2
C9075ra	STUD	100	3193	0.75	1
C9075ra	STUD	101	3235	0.75	2
C9075ra	STUD	102	3235	0.75	3
C9075ra	STUD	103	3193	0.75	1
C9075ra	STUD	104	3235	0.75	1
C9075ra	STUD	105	3235	0.75	1
BRA-1.0x30-550	Brace	201	3866	1.0	2
TENSIONER_SET	Tensnr	N/A	0	N/A	2
Washer40x40x5	HOLDDOWN	N/A	5	7	
SCREW-M6-1PX18-TEK	SCREW	N/A	-	-	12
WALLTITE	SCREW	N/A	-	-	72

Length crib: 2
Floor RL: 0
INTERNAL wall



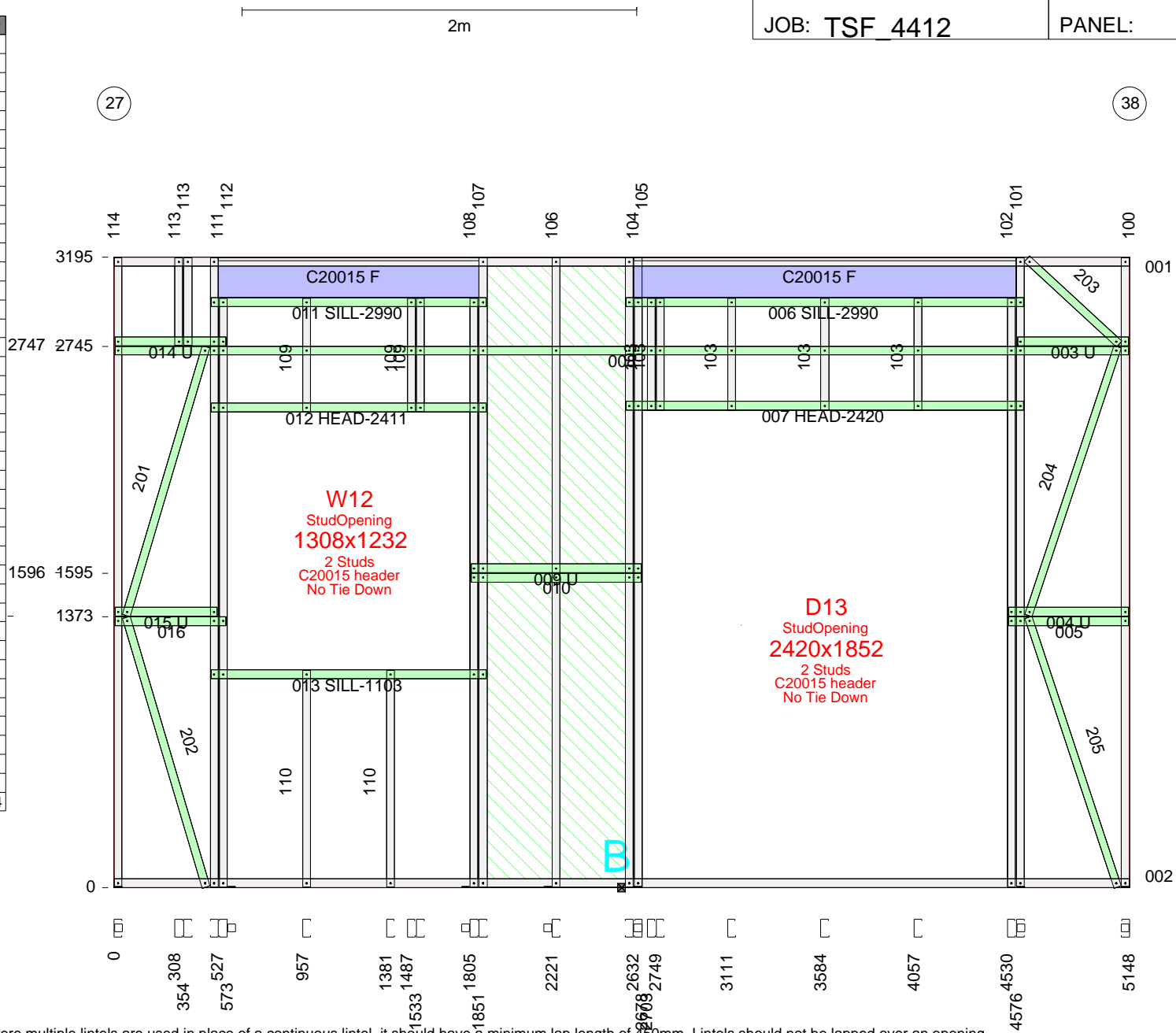
Screws at each end of BRA-1.0x30-550 = 3

All dimensions to back of section. Where multiple lintels are used in place of a continuous lintel, it should have a minimum lap length of 450mm. Lintels should not be lapped over an opening.

ASSEMBLY DETAILS	OPENING DIMENSIONS (steel to steel)					PACKING DETAILS		LENGTH	MAX. HEIGHT
	ID	HEIGHT	WIDTH	HEAD	SILL	LEFT SIDE	RIGHT SIDE	2848	3197
ASSEMBLED: FABRICATOR: TRUE STEEL FRAMES CUSTOMER: BERT FARINA CONSTRUCTION CLIENT REF: 4 REDWOOD ST, ROSTREVOR								DETAILER	DETAILED
								VANTAGE_DS	21-10-2019
								WEIGHT	SCALE
								46	1:30

DESCRIPTION	Usage	No.	Length	Mat.	Qty
U904475G550	TOPPLATE	001	5148	0.75	1
U904475G550	BOTPLATE	002	5148	0.75	1
U904475G550	NOGGING	003	562	0.75	1
U904475G550	NOGGING	004	608	0.75	1
U904475G550	NOGGING	005	608	0.75	1
U904475G550	SILL	006	2014	0.75	1
U904475G550	HEAD	007	2014	0.75	1
U904475G550	NOGGING	008	5138	0.75	1
U904475G550	NOGGING	009	863	0.75	1
U904475G550	NOGGING	010	863	0.75	1
U904475G550	SILL	011	1394	0.75	1
U904475G550	HEAD	012	1394	0.75	1
U904475G550	SILL	013	1394	0.75	1
U904475G550	NOGGING	014	563	0.75	1
U904475G550	NOGGING	015	517	0.75	1
U904475G550	NOGGING	016	563	0.75	1
C9075ra	STUD	100	3233	0.75	1
C9075ra	STUD	101	3233	0.75	1
C9075ra	STUD	102	2986	0.75	1
C9075ra	STUD	103	566	0.75	5
C9075ra	STUD	104	3191	0.75	1
C9075ra	STUD	105	3028	0.75	1
C9075ra	STUD	106	3233	0.75	1
C9075ra	STUD	107	3191	0.75	1
C9075ra	STUD	108	3028	0.75	1
C9075ra	STUD	109	575	0.75	3
C9075ra	STUD	110	1099	0.75	2
C9075ra	STUD	111	3191	0.75	1
C9075ra	STUD	112	3028	0.75	1
C9075ra	STUD	113	444	0.75	2
C9075ra	STUD	114	3233	0.75	1
C9075ra	WEB	201	1423	0.75	1
C9075ra	WEB	202	1427	0.75	1
C9075ra	WEB	203	637	0.75	1
C9075ra	WEB	204	1437	0.75	1
C9075ra	WEB	205	1440	0.75	1
Hardibrace_5mm	PanelBrace	N/A	3191	5	1
C20015	HEADER	N/A	1320	1.5	1
C20015	HEADER	N/A	1940	1.5	1
Washer40x40x5	HOLDDOWN	N/A		5	7
WALLTITE	SCREW	N/A	-	-	234

Length crib: 2
Floor RL: 0
INTERNAL wall

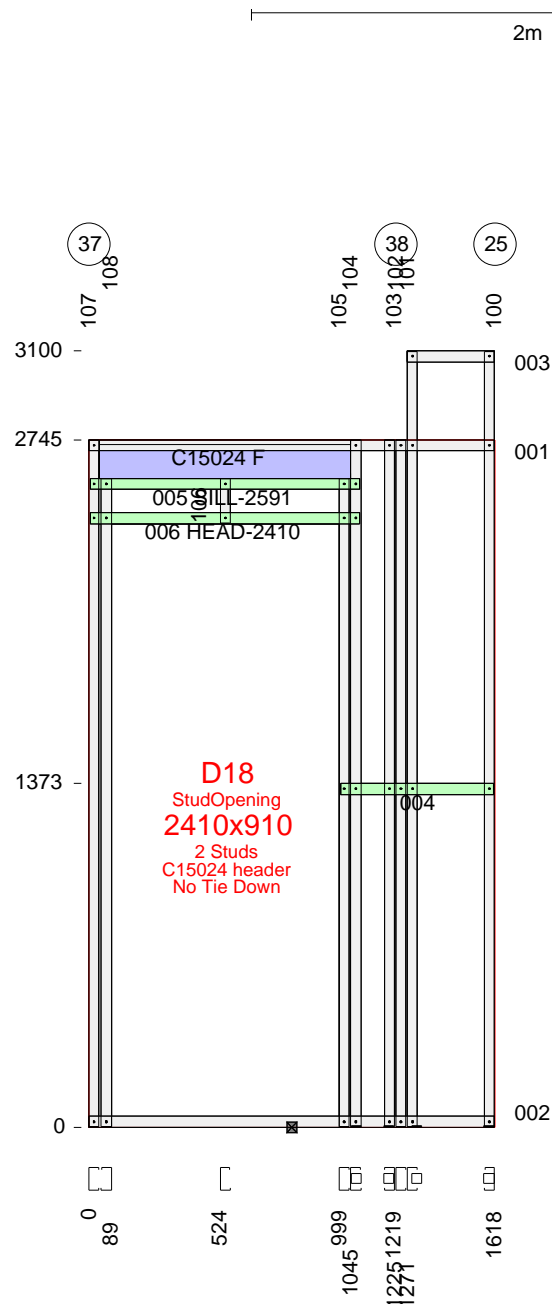


All dimensions to back of section. Where multiple lintels are used in place of a continuous lintel, it should have a minimum lap length of 450mm. Lintels should not be lapped over an opening.

ASSEMBLY DETAILS	OPENING DIMENSIONS (steel to steel)				PACKING DETAILS		LENGTH	MAX. HEIGHT
	ID	MANUF.	CAT NO.	UNIT DIM.	LEFT SIDE	RIGHT SIDE	5148	3195
ASSEMBLED: FABRICATOR: TRUE STEEL FRAMES CUSTOMER: BERT FARINA CONSTRUCTION CLIENT REF: 4 REDWOOD ST, ROSTREVOR	W12 D13	STUDOPEN STUDOPEN	StudOpening StudOpening	1308x1232 2420x1852			DETAILER	DETAILED
							VANTAGE_DS	21-10-2019
							WEIGHT	SCALE
							117	1:30

DESCRIPTION	Usage	No.	Length	Mat.	Qty
U904475G550	TOPPLATE	001	1618	0.75	1
U904475G550	BOTPLATE	002	1618	0.75	1
U904475G550	TOPPLATE	003	347	0.75	1
U904475G550	NOGGING	004	609	0.75	1
U904475G550	SILL	005	1075	0.75	1
U904475G550	HEAD	006	1075	0.75	1
C9075ra	STUD	100	3138	0.75	1
C9075ra	STUD	101	3096	0.75	1
C9075ra	STUD	102	2741	0.75	1
C9075ra	STUD	103	2783	0.75	1
C9075ra	STUD	104	2783	0.75	1
C9075ra	STUD	105	2587	0.75	1
C9075ra	STUD	106	177	0.75	1
C9075ra	STUD	107	2741	0.75	1
C9075ra	STUD	108	2587	0.75	1
C15024	HEADER	N/A	1001	2.4	1
Washer40x40x5	HOLDDOWN	N/A		5	4
WALLTITE	SCREW	N/A	-	-	64

Length crib: 2
Floor RL: 0
INTERNAL wall



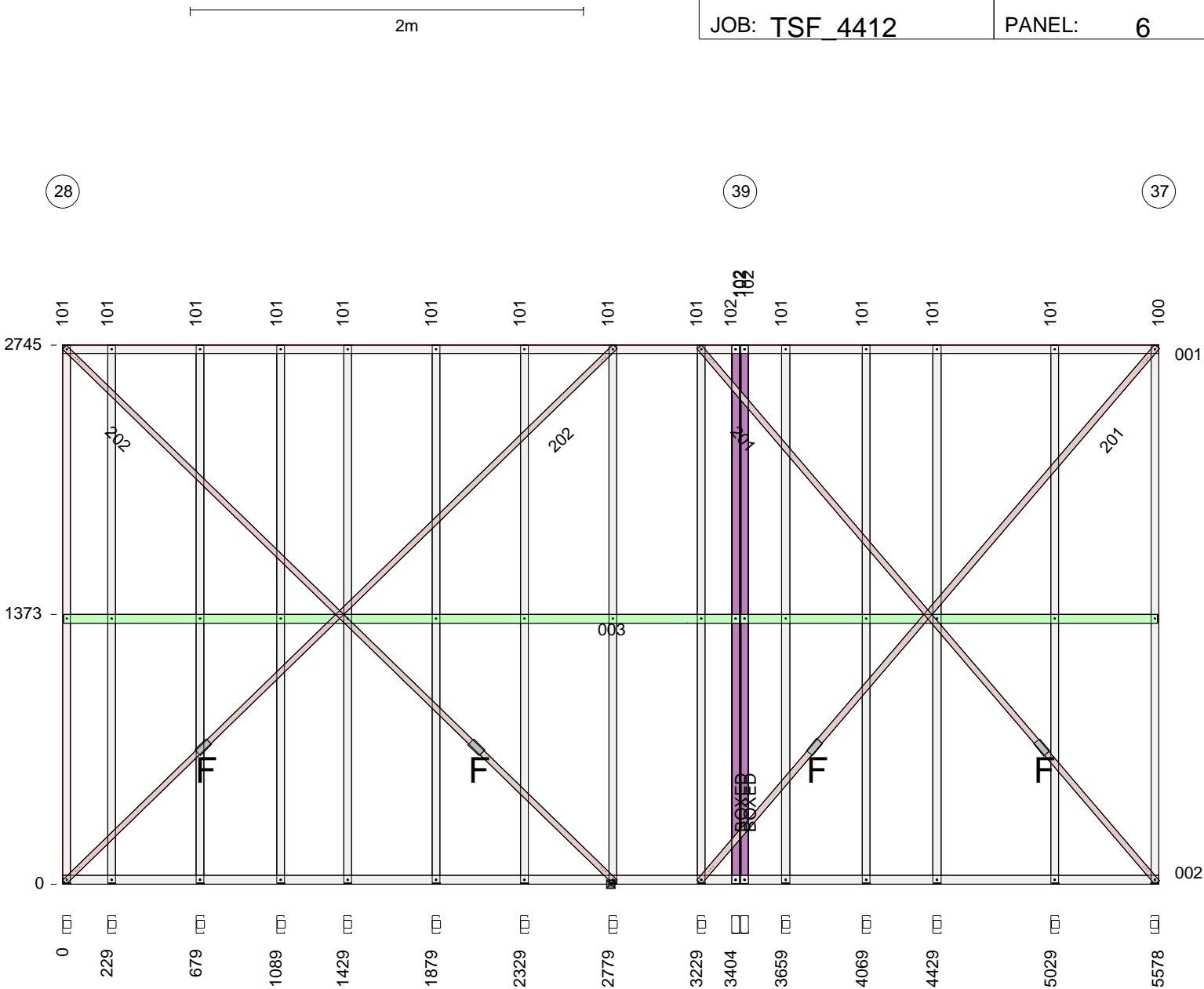
All dimensions to back of section. Where multiple lintels are used in place of a continuous lintel, it should have a minimum lap length of 450mm. Lintels should not be lapped over an opening.

ASSEMBLY DETAILS	OPENING DIMENSIONS (steel to steel)				PACKING DETAILS		LENGTH	MAX. HEIGHT
	ID	MANUF.	CAT NO.	UNIT DIM.	LEFT SIDE	RIGHT SIDE	1618	2745
ASSEMBLED: FABRICATOR: TRUE STEEL FRAMES CUSTOMER: BERT FARINA CONSTRUCTION CLIENT REF: 4 REDWOOD ST, ROSTREVOR	D18	STUDOPEN	StudOpening	2410x910			DETAILER	DETAILED
							VANTAGE_DS	21-10-2019
							WEIGHT	SCALE
							37	1:30

DESCRIPTION	Usage	No.	Length	Mat.	Qty
U904475G550	TOPPLATE	001	5578	0.75	1
U904475G550	BOTPLATE	002	5578	0.75	1
U904475G550	NOGGING	003	5568	0.75	1
C9075ra	STUD	100	2783	0.75	1
C9075ra	STUD	101	2783	0.75	13
C9075ra	STUD	102	2741	0.75	4
BRA-1.0x30-550	Brace	201	3587	1.0	2
BRA-1.0x30-550	Brace	202	3908	1.0	2
TENSIONER_SET	Tensnr	N/A	0	N/A	4
Washer40x40x5	HOLDDOWN	N/A		5	14
SCREW-M6-1PX18-TEK	SCREW	N/A	-	-	24
WALLTITE	SCREW	N/A	-	-	108

Length crib: 2
Floor RL: 0
INTERNAL wall

Screws at each end of BRA-1.0x30-550 = 3

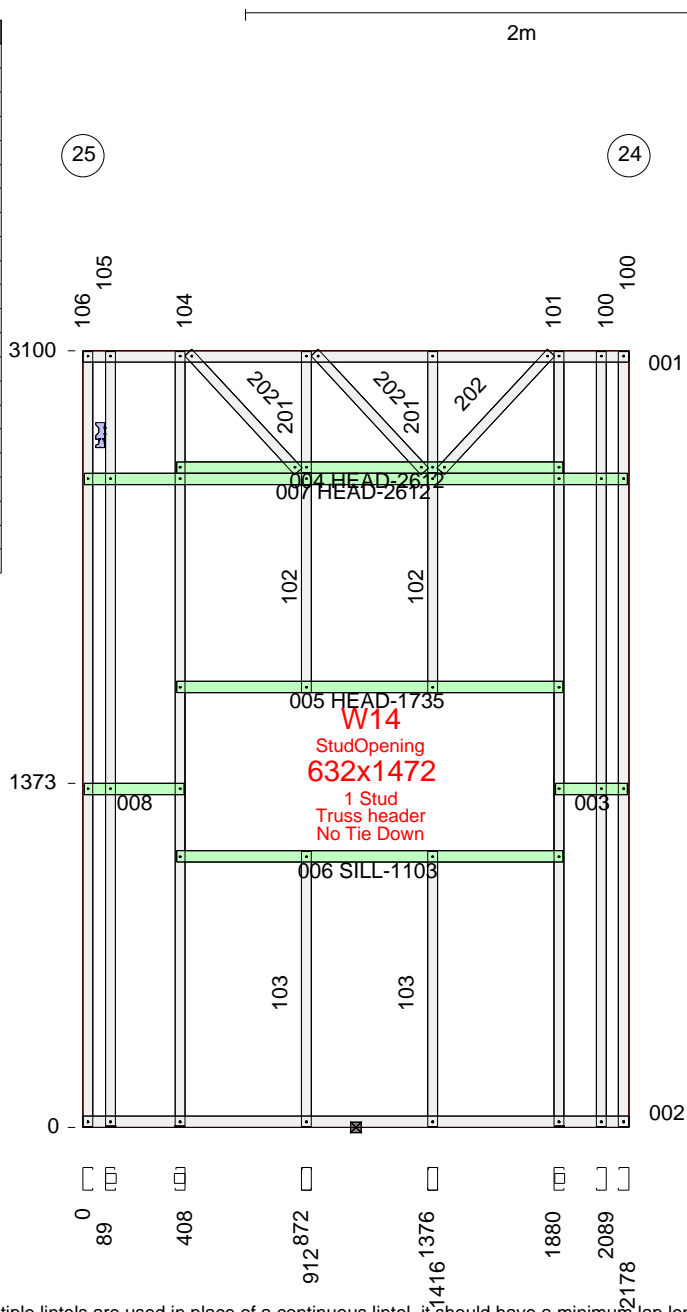


All dimensions to back of section. Where multiple lintels are used in place of a continuous lintel, it should have a minimum lap length of 450mm. Lintels should not be lapped over an opening.

ASSEMBLY DETAILS	OPENING DIMENSIONS (steel to steel)					PACKING DETAILS		LENGTH	MAX. HEIGHT
	ID	HEIGHT	WIDTH	HEAD	SILL	LEFT SIDE	RIGHT SIDE	5578	2745
ASSEMBLED:								DETAILER	DETAILED
FABRICATOR: TRUE STEEL FRAMES								VANTAGE_DS	21-10-2019
CUSTOMER: BERT FARINA CONSTRUCTION								WEIGHT	SCALE
CLIENT REF: 4 REDWOOD ST, ROSTREVOR								76	1:30

DESCRIPTION	Usage	No.	Length	Mat.	Qty
U904475G550	TOPPLATE	001	2178	0.75	1
U904475G550	BOTPLATE	002	2178	0.75	1
U904475G550	NOGGING	003	288	0.75	1
U904475G550	HEAD	004	1542	0.75	1
U904475G550	HEAD	005	1542	0.75	1
U904475G550	SILL	006	1542	0.75	1
U904475G550	HEAD	007	2168	0.75	1
U904475G550	NOGGING	008	398	0.75	1
C9075ra	STUD	100	3096	0.75	2
C9075ra	STUD	101	3138	0.75	1
C9075ra	STUD	102	873	0.75	2
C9075ra	STUD	103	1099	0.75	2
C9075ra	STUD	104	3138	0.75	1
C9075ra	STUD	105	3138	0.75	1
C9075ra	STUD	106	3096	0.75	1
C9075ra	WEB	201	484	0.75	2
C9075ra	WEB	202	646	0.75	3
MULTIGRIP	TIEDOWN	N/A		3	1
Washer40x40x5	HOLDDOWN	N/A		5	3
SCREW-12-14x20-HEX	SCREW	N/A	-	-	4
SCREW-M6-1PX18-TEK	SCREW	N/A	-	-	2
WALLTITE	SCREW	N/A	-	-	96

Length crib: 2
Floor RL: 0
INTERNAL wall



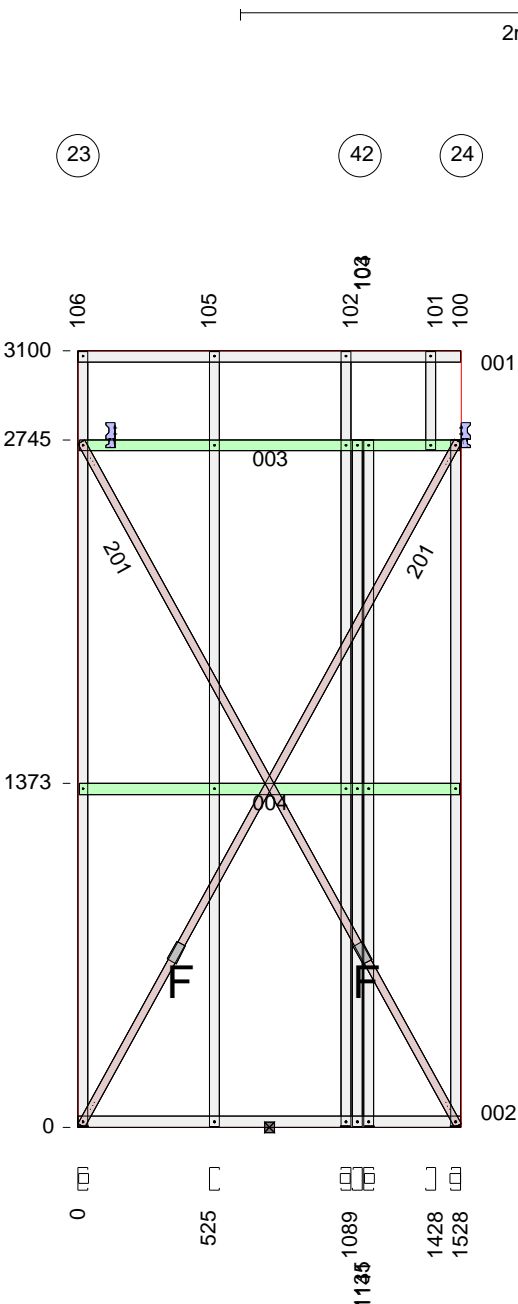
All dimensions to back of section. Where multiple lintels are used in place of a continuous lintel, it should have a minimum lap length of 450mm. Lintels should not be lapped over an opening.

ASSEMBLY DETAILS	OPENING DIMENSIONS (steel to steel)				PACKING DETAILS		LENGTH	MAX. HEIGHT
	ID	MANUF.	CAT NO.	UNIT DIM.	LEFT SIDE	RIGHT SIDE	2178	3100
ASSEMBLED: FABRICATOR: TRUE STEEL FRAMES CUSTOMER: BERT FARINA CONSTRUCTION CLIENT REF: 4 REDWOOD ST, ROSTREVOR	W14	STUDOPEN	StudOpening	632x1472			DETAILER	DETAILED
							VANTAGE_DS	21-10-2019
							WEIGHT	SCALE
							40	1:30

DESCRIPTION	Usage	No.	Length	Mat.	Qty
U904475G550	TOPPLATE	001	1528	0.75	1
U904475G550	BOTPLATE	002	1528	0.75	1
U904475G550	NOGGING	003	1518	0.75	1
U904475G550	NOGGING	004	1518	0.75	1
C9075ra	STUD	100	2783	0.75	1
C9075ra	STUD	101	393	0.75	1
C9075ra	STUD	102	3138	0.75	1
C9075ra	STUD	103	2741	0.75	1
C9075ra	STUD	104	2783	0.75	1
C9075ra	STUD	105	3096	0.75	1
C9075ra	STUD	106	3138	0.75	1
BRA-1.0x30-550	Brace	201	3117	1.0	2
MULTIGRIP	TIEDOWN	N/A		3	2
Washer40x40x5	HOLDDOWN	N/A		5	4
TENSIONER_SET	Tensnr	N/A	0	N/A	2
SCREW-12-14x20-HEX	SCREW	N/A	-	-	8
SCREW-M6-1PX18-TEK	SCREW	N/A	-	-	16
WALLTITE	SCREW	N/A	-	-	46

Length crib: 2
Floor RL: 0
INTERNAL wall

Screws at each end of BRA-1.0x30-550 = 3

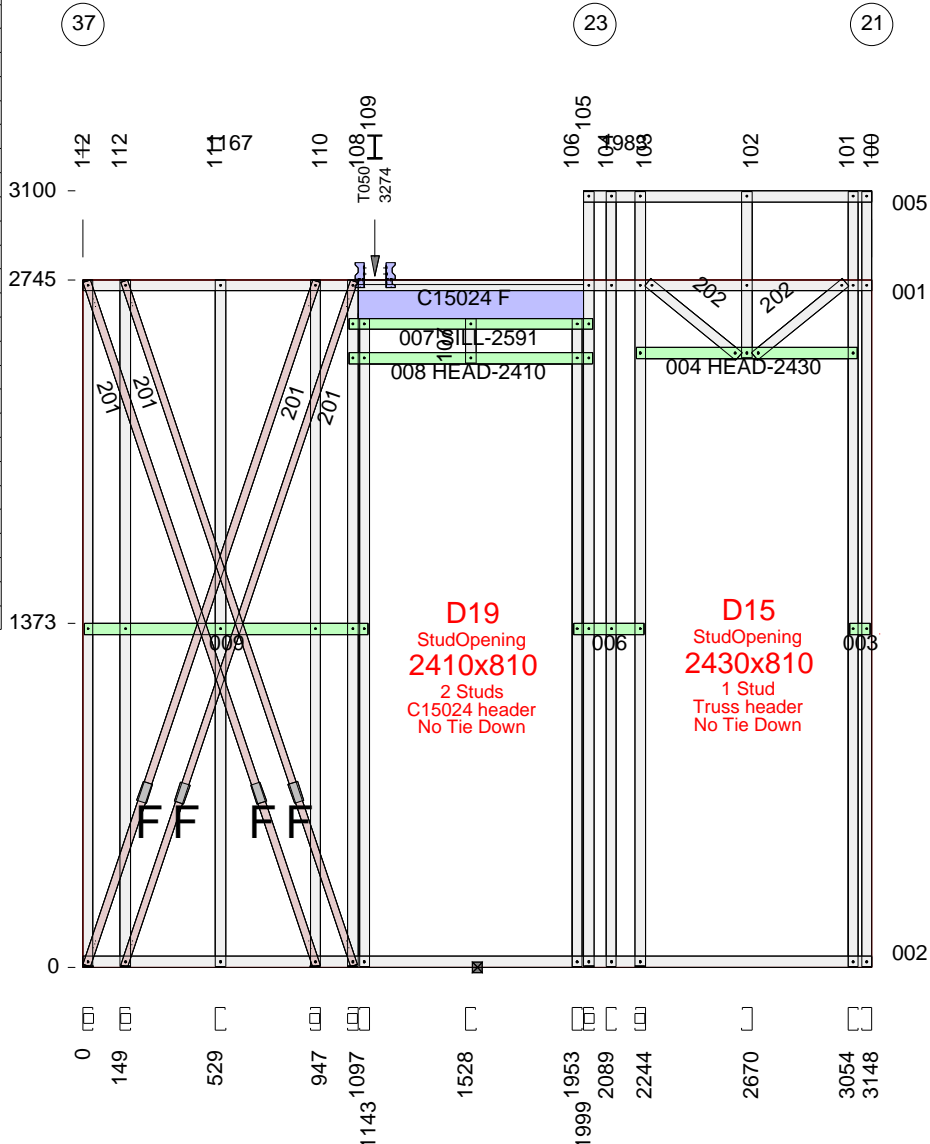


ASSEMBLY DETAILS	OPENING DIMENSIONS (steel to steel)					PACKING DETAILS		LENGTH	MAX. HEIGHT
	ID	HEIGHT	WIDTH	HEAD	SILL	LEFT SIDE	RIGHT SIDE	1528	3100
ASSEMBLED: FABRICATOR: TRUE STEEL FRAMES CUSTOMER: BERT FARINA CONSTRUCTION CLIENT REF: 4 REDWOOD ST, ROSTREVOR								DETAILER	DETAILED
								VANTAGE_DS	21-10-2019
								WEIGHT	SCALE
								28	1:30

DESCRIPTION	Usage	No.	Length	Mat.	Qty
U904475G550	TOPPLATE	001	3148	0.75	1
U904475G550	BOTPLATE	002	3148	0.75	1
U904475G550	NOGGING	003	84	0.75	1
U904475G550	HEAD	004	880	0.75	1
U904475G550	TOPPLATE	005	1149	0.75	1
U904475G550	NOGGING	006	281	0.75	1
U904475G550	SILL	007	972	0.75	1
U904475G550	HEAD	008	972	0.75	1
U904475G550	NOGGING	009	1133	0.75	1
C9075ra	STUD	100	3096	0.75	1
C9075ra	STUD	101	3096	0.75	1
C9075ra	STUD	102	666	0.75	1
C9075ra	STUD	103	3138	0.75	1
C9075ra	STUD	104	3096	0.75	1
C9075ra	STUD	105	3138	0.75	1
C9075ra	STUD	106	2587	0.75	1
C9075ra	STUD	107	177	0.75	1
C9075ra	STUD	108	2783	0.75	1
C9075ra	STUD	109	2587	0.75	1
C9075ra	STUD	110	2783	0.75	1
C9075ra	STUD	111	2741	0.75	1
C9075ra	STUD	112	2783	0.75	2
BRA-1.0x30-550	Brace	201	2883	1.0	4
C9075ra	WEB	202	469	0.75	2
C15024	HEADER	N/A	898	2.4	1
MULTIGRIP	TIEDOWN	N/A		3	2
TENSIONER_SET	Tensnr	N/A	0	N/A	4
Washer40x40x5	HOLDDOWN	N/A		5	6
SCREW-12-14x20-HEX	SCREW	N/A	-	-	8
SCREW-M6-1PX18-TEK	SCREW	N/A	-	-	28
WALLTITE	SCREW	N/A	-	-	116

Length crib: 2
Floor RL: 0
INTERNAL wall

Screws at each end of BRA-1.0x30-550 = 3

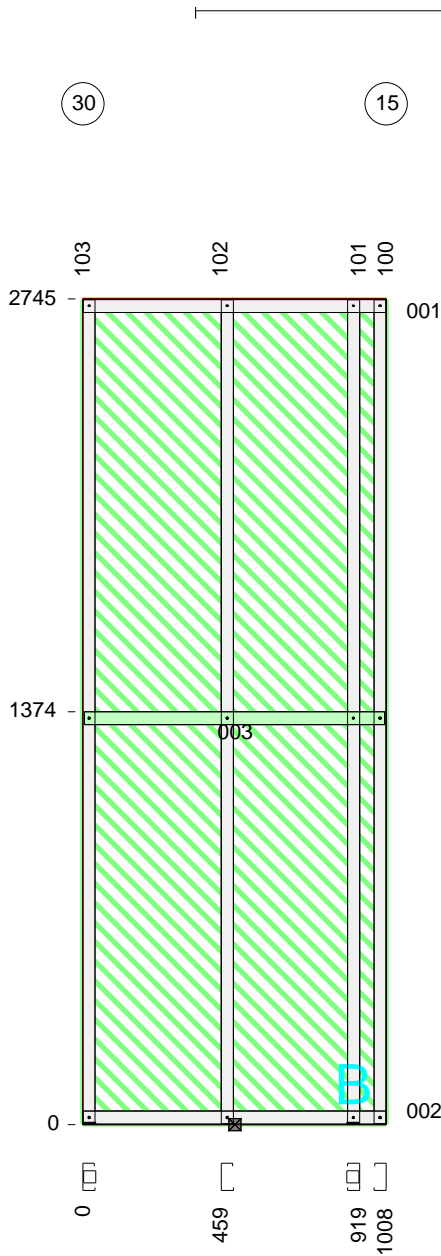


All dimensions to back of section. Where multiple lintels are used in place of a continuous lintel, it should have a minimum lap length of 450mm. Lintels should not be lapped over an opening.

ASSEMBLY DETAILS		OPENING DIMENSIONS (steel to steel)				PACKING DETAILS		LENGTH	MAX. HEIGHT		
		ID	MANUF.	CAT NO.	UNIT DIM.	LEFT SIDE	RIGHT SIDE	3148	2745		
ASSEMBLED: FABRICATOR: TRUE STEEL FRAMES CUSTOMER: BERT FARINA CONSTRUCTION CLIENT REF: 4 REDWOOD ST, ROSTREVOR		D15	STUDOPEN	StudOpening	2430x810			DETAILER	DETAILED		
		D19	STUDOPEN	StudOpening	2410x810			VANTAGE_DS	21-10-2019		
								WEIGHT	SCALE		
								60	1:30		

DESCRIPTION	Usage	No.	Length	Mat.	Qty
U904475G550	TOPPLATE	001	1008	0.75	1
U904475G550	BOTPLATE	002	1008	0.75	1
U904475G550	NOGGING	003	998	0.75	1
C9075ra	STUD	100	2741	0.75	1
C9075ra	STUD	101	2783	0.75	1
C9075ra	STUD	102	2741	0.75	1
C9075ra	STUD	103	2783	0.75	1
Hardibrace_5mm	PanelBrace	N/A	2741	5	1
Washer40x40x5	HOLDDOWN	N/A		5	2
WALLTITE	SCREW	N/A	-	-	24

Length crib: 2
Floor RL: 0
INTERNAL wall

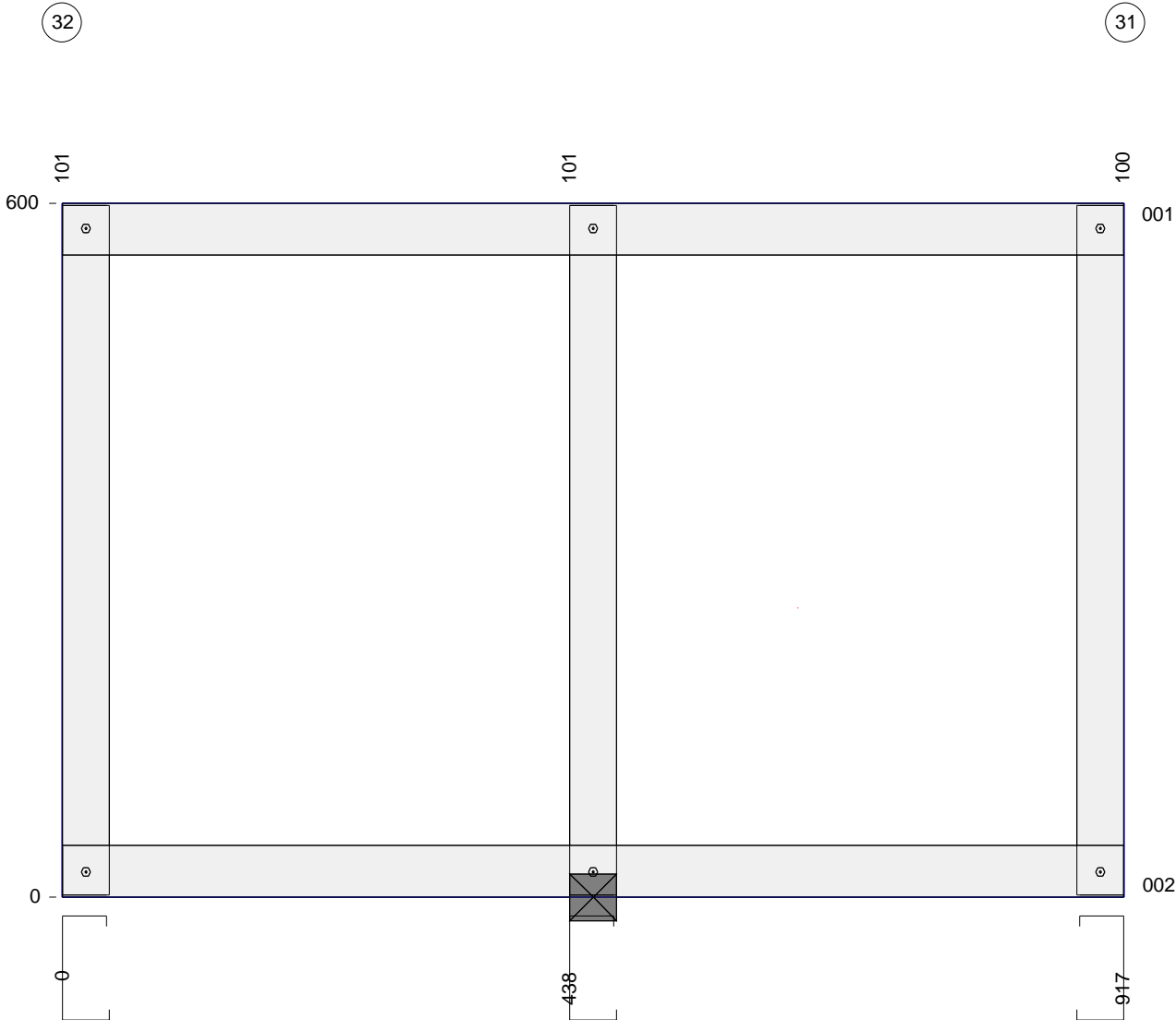


All dimensions to back of section. Where multiple lintels are used in place of a continuous lintel, it should have a minimum lap length of 450mm. Lintels should not be lapped over an opening.

ASSEMBLY DETAILS	OPENING DIMENSIONS (steel to steel)					PACKING DETAILS		LENGTH	MAX. HEIGHT
	ID	HEIGHT	WIDTH	HEAD	SILL	LEFT SIDE	RIGHT SIDE	1008	2745
ASSEMBLED: FABRICATOR: TRUE STEEL FRAMES CUSTOMER: BERT FARINA CONSTRUCTION CLIENT REF: 4 REDWOOD ST, ROSTREVOR								DETAILER	DETAILED
								VANTAGE_DS	21-10-2019
								WEIGHT	SCALE
								34	1:25

DESCRIPTION	Usage	No.	Length	Mat.	Qty
U904475G550	TOPPLATE	001	917	0.75	1
U904475G550	BOTPLATE	002	917	0.75	1
C9075ra	STUD	100	596	0.75	1
C9075ra	STUD	101	596	0.75	2
WALLTITE	SCREW	N/A	-	-	12

Length crib: 2
Floor RL: 0
INTERNAL wall



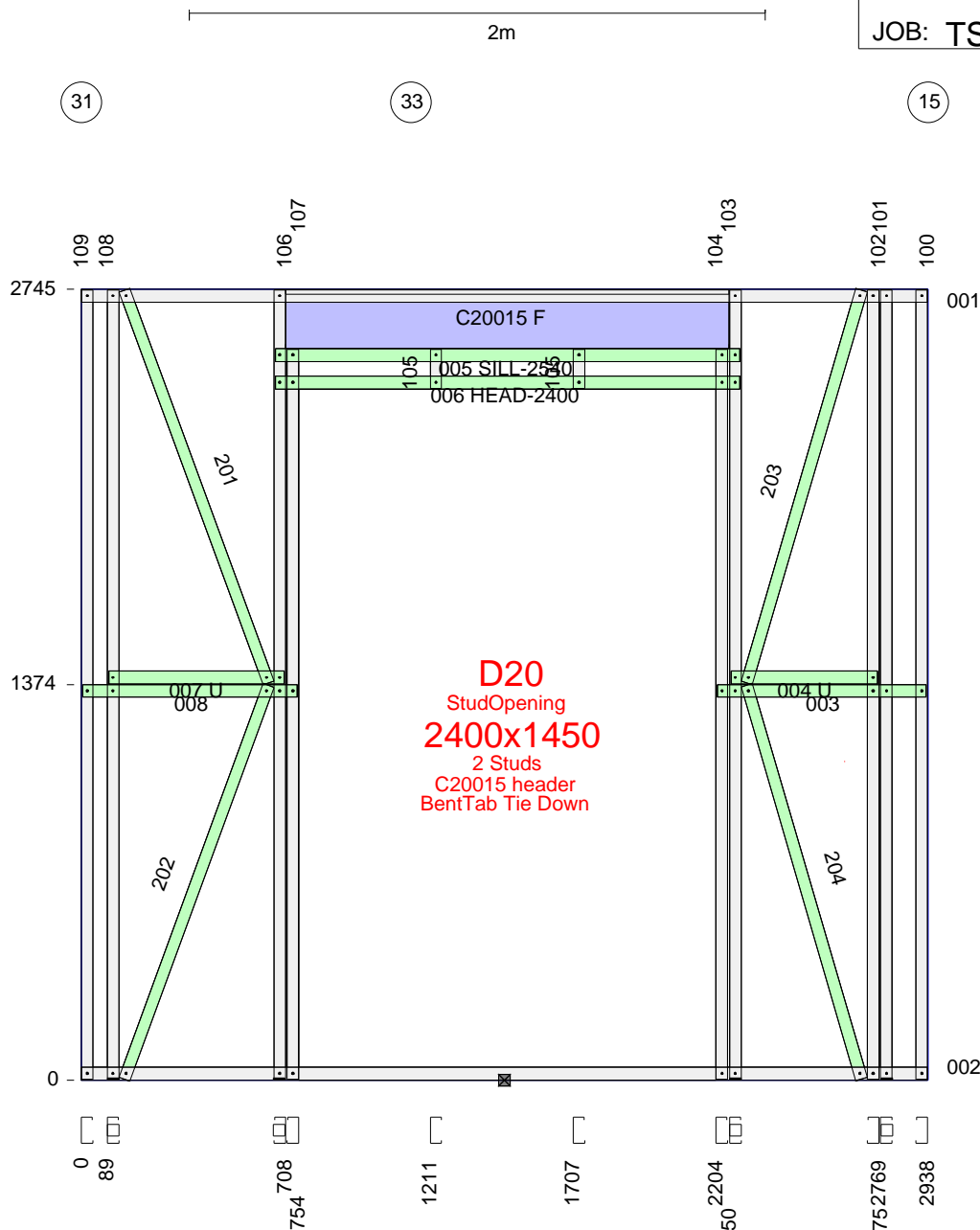
All dimensions to back of section. Where multiple lintels are used in place of a continuous lintel, it should have a minimum lap length of 450mm. Lintels should not be lapped over an opening.

ASSEMBLY DETAILS	OPENING DIMENSIONS (steel to steel)					PACKING DETAILS		LENGTH	MAX. HEIGHT
	ID	HEIGHT	WIDTH	HEAD	SILL	LEFT SIDE	RIGHT SIDE	917	600
ASSEMBLED: FABRICATOR: TRUE STEEL FRAMES CUSTOMER: BERT FARINA CONSTRUCTION CLIENT REF: 4 REDWOOD ST, ROSTREVOR								DETAILER	DETAILED
								VANTAGE_DS	21-10-2019
								WEIGHT	SCALE
								4	1:6

DESCRIPTION	Usage	No.	Length	Mat.	Qty
U904475G550	TOPPLATE	001	2938	0.75	1
U904475G550	BOTPLATE	002	2938	0.75	1
U904475G550	NOGGING	003	724	0.75	1
U904475G550	NOGGING	004	509	0.75	1
U904475G550	SILL	005	1612	0.75	1
U904475G550	HEAD	006	1612	0.75	1
U904475G550	NOGGING	007	609	0.75	1
U904475G550	NOGGING	008	744	0.75	1
C9075ra	STUD	100	2741	0.75	1
C9075ra	STUD	101	2783	0.75	1
C9075ra	STUD	102	2741	0.75	1
C9075ra	STUD	103	2783	0.75	1
C9075ra	STUD	104	2536	0.75	1
C9075ra	STUD	105	136	0.75	2
C9075ra	STUD	106	2783	0.75	1
C9075ra	STUD	107	2536	0.75	1
C9075ra	STUD	108	2783	0.75	1
C9075ra	STUD	109	2741	0.75	1
C9075ra	WEB	201	1452	0.75	1
C9075ra	WEB	202	1456	0.75	1
C9075ra	WEB	203	1421	0.75	1
C9075ra	WEB	204	1425	0.75	1
C20015	HEADER	N/A	1538	1.5	1
Washer40x40x5	HOLDDOWN	N/A	5	5	4
WALLTITE	SCREW	N/A	-	-	98

Length crib: 2
Floor RL: 0
INTERNAL wall

1375 -

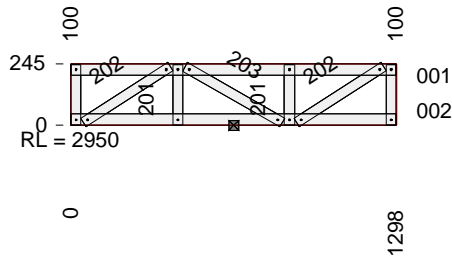


All dimensions to back of section. Where multiple lintels are used in place of a continuous lintel, it should have a minimum lap length of 450mm. Lintels should not be lapped over an opening.

ASSEMBLY DETAILS	OPENING DIMENSIONS (steel to steel)				PACKING DETAILS		LENGTH	MAX. HEIGHT
	ID	MANUF.	CAT NO.	UNIT DIM.	LEFT SIDE	RIGHT SIDE	2938	2745
ASSEMBLED:	D20	STUDOPEN	StudOpening	2400x1450				
FABRICATOR: TRUE STEEL FRAMES							DETAILER	DETAILED
CUSTOMER: BERT FARINA CONSTRUCTION							VANTAGE_DS	21-10-2019
CLIENT REF: 4 REDWOOD ST, ROSTREVOR							WEIGHT	SCALE
							53	1:25

DESCRIPTION	Usage	No.	Length	Mat.	Qty
U904475G550	TOPPLATE	001	1298	0.75	1
U904475G550	BOTPLATE	002	1298	0.75	1
C9075ra	STUD	100	241	0.75	2
C9075ra	WEB	201	241	0.75	2
C9075ra	WEB	202	413	0.75	2
C9075ra	WEB	203	447	0.75	1
WALLTITE	SCREW	N/A	-	-	28

Length crib: 2
Floor RL: 0
INTERNAL wall



38

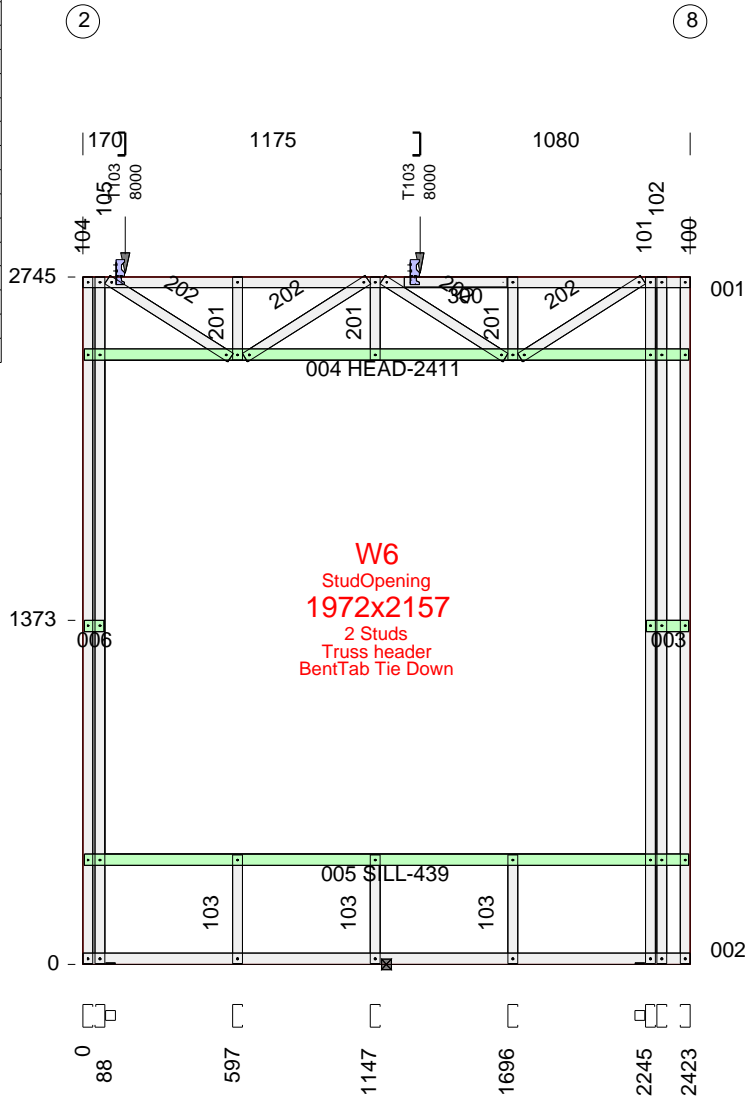
41

All dimensions to back of section. Where multiple lintels are used in place of a continuous lintel, it should have a minimum lap length of 450mm. Lintels should not be lapped over an opening.

ASSEMBLY DETAILS	OPENING DIMENSIONS (steel to steel)					PACKING DETAILS		LENGTH	MAX. HEIGHT
	ID	HEIGHT	WIDTH	HEAD	SILL	LEFT SIDE	RIGHT SIDE	1298	245
ASSEMBLED: FABRICATOR: TRUE STEEL FRAMES CUSTOMER: BERT FARINA CONSTRUCTION CLIENT REF: 4 REDWOOD ST, ROSTREVOR								DETAILER	DETAILED
								VANTAGE_DS	21-10-2019
								WEIGHT	SCALE
								5	1:30

DESCRIPTION	Usage	No.	Length	Mat.	Qty
U904475G550	TOPPLATE	001	2423	0.75	1
U904475G550	BOTPLATE	002	2423	0.75	1
U904475G550	NOGGING	003	168	0.75	1
U904475G550	HEAD	004	2413	0.75	1
U904475G550	SILL	005	2413	0.75	1
U904475G550	NOGGING	006	78	0.75	1
C9075ra	STUD	100	2741	0.75	1
C9075ra	STUD	101	2783	0.75	1
C9075ra	STUD	102	2741	0.75	1
C9075ra	STUD	103	435	0.75	3
C9075ra	STUD	104	2741	0.75	1
C9075ra	STUD	105	2783	0.75	1
C9075ra	WEB	201	330	0.75	3
C9075ra	WEB	202	582	0.75	4
C9075ra	STIFFENER	300	410	0.75	1
MULTIGRIP	TIEDOWN	N/A		3	2
Washer40x40x5	HOLDDOWN	N/A		5	2
SCREW-12-14x20-HEX	SCREW	N/A	-	-	8
SCREW-M6-1PX18-TEK	SCREW	N/A	-	-	4
WALLTITE	SCREW	N/A	-	-	96

Length crib: 2
Floor RL: 3217
INTERNAL wall

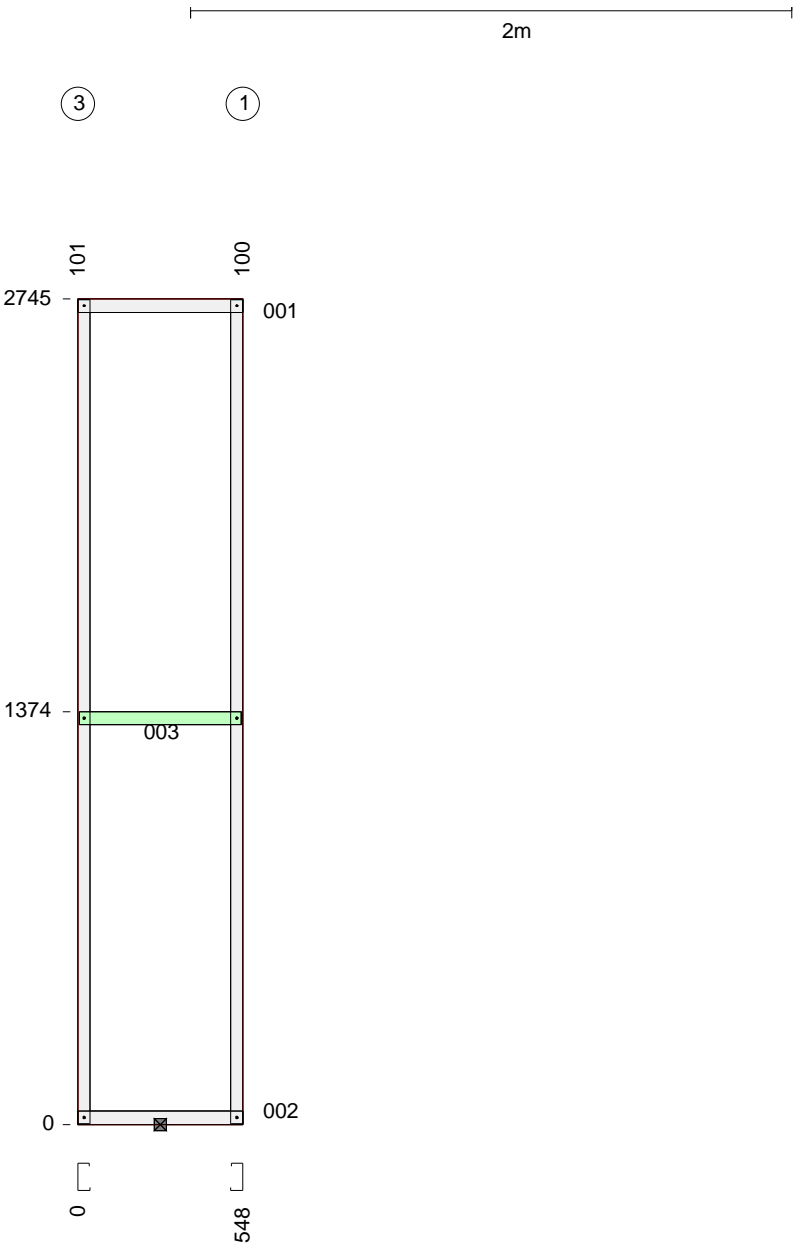


All dimensions to back of section. Where multiple lintels are used in place of a continuous lintel, it should have a minimum lap length of 450mm. Lintels should not be lapped over an opening.

ASSEMBLY DETAILS	OPENING DIMENSIONS (steel to steel)				PACKING DETAILS		LENGTH	MAX. HEIGHT
	ID	MANUF.	CAT NO.	UNIT DIM.	LEFT SIDE	RIGHT SIDE	2423	2745
ASSEMBLED:	W6	STUDOPEN	StudOpening	1972x2157			DETAILER	DETAILED
FABRICATOR: TRUE STEEL FRAMES							VANTAGE_DS	21-10-2019
CUSTOMER: BERT FARINA CONSTRUCTION							WEIGHT	SCALE
CLIENT REF: 4 REDWOOD ST, ROSTREVOR							31	1:30

DESCRIPTION	Usage	No.	Length	Mat.	Qty
U904475G550	TOPPLATE	001	548	0.75	1
U904475G550	BOTPLATE	002	548	0.75	1
U904475G550	NOGGING	003	538	0.75	1
C9075ra	STUD	100	2741	0.75	1
C9075ra	STUD	101	2741	0.75	1
WALLTITE	SCREW	N/A	-	-	12

Length crib: 2
Floor RL: 3217
INTERNAL wall

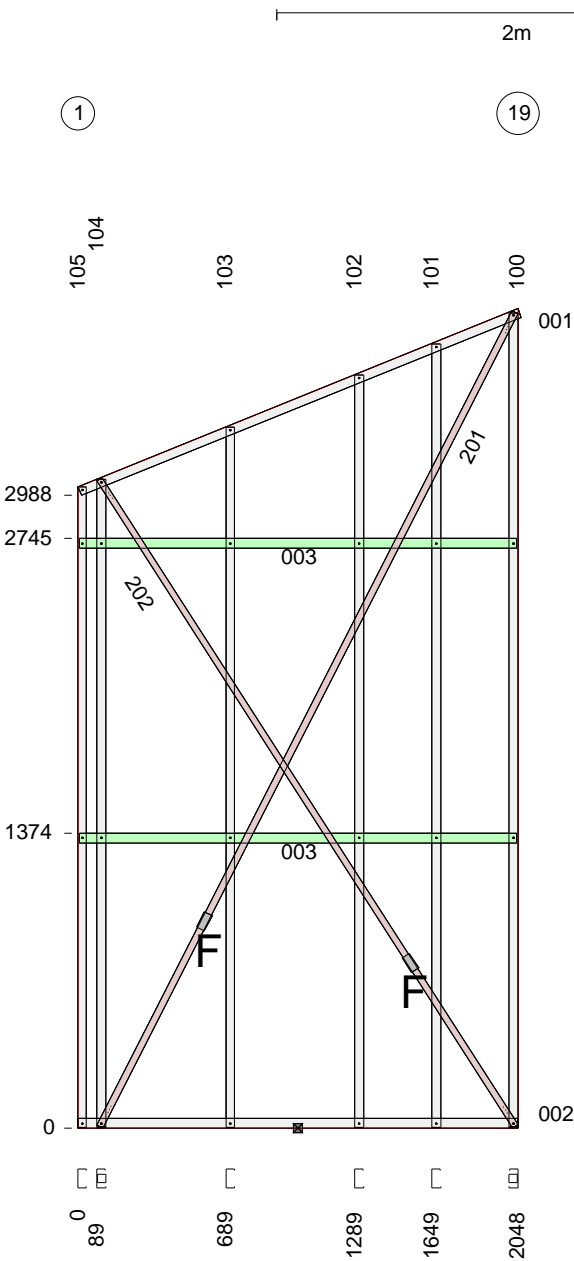


All dimensions to back of section. Where multiple lintels are used in place of a continuous lintel, it should have a minimum lap length of 450mm. Lintels should not be lapped over an opening.

ASSEMBLY DETAILS	OPENING DIMENSIONS (steel to steel)					PACKING DETAILS		LENGTH	MAX. HEIGHT
	ID	HEIGHT	WIDTH	HEAD	SILL	LEFT SIDE	RIGHT SIDE	548	2745
ASSEMBLED:								DETAILER	DETAILED
FABRICATOR: TRUE STEEL FRAMES								VANTAGE_DS	21-10-2019
CUSTOMER: BERT FARINA CONSTRUCTION								WEIGHT	SCALE
CLIENT REF: 4 REDWOOD ST, ROSTREVOR								8	1:25

DESCRIPTION	Usage	No.	Length	Mat.	Qty
U904475G550	TOPPLATE	001	2209	0.75	1
U904475G550	BOTPLATE	002	2048	0.75	1
U904475G550	NOGGING	003	2038	0.75	2
C9075ra	STUD	100	3838	0.75	1
C9075ra	STUD	101	3650	0.75	1
C9075ra	STUD	102	3505	0.75	1
C9075ra	STUD	103	3262	0.75	1
C9075ra	STUD	104	3062	0.75	1
C9075ra	STUD	105	2984	0.75	1
BRA-1.0x30-550	Brace	201	4255	1.0	1
BRA-1.0x30-550	Brace	202	3581	1.0	1
TENSIONER_SET	Tensnr	N/A	0	N/A	2
Washer40x40x5	HOLDDOWN	N/A		5	2
SCREW-M6-1PX18-TEK	SCREW	N/A	-	-	12
WALLTITE	SCREW	N/A	-	-	48

Length crib: 2
Floor RL: 3217
INTERNAL wall



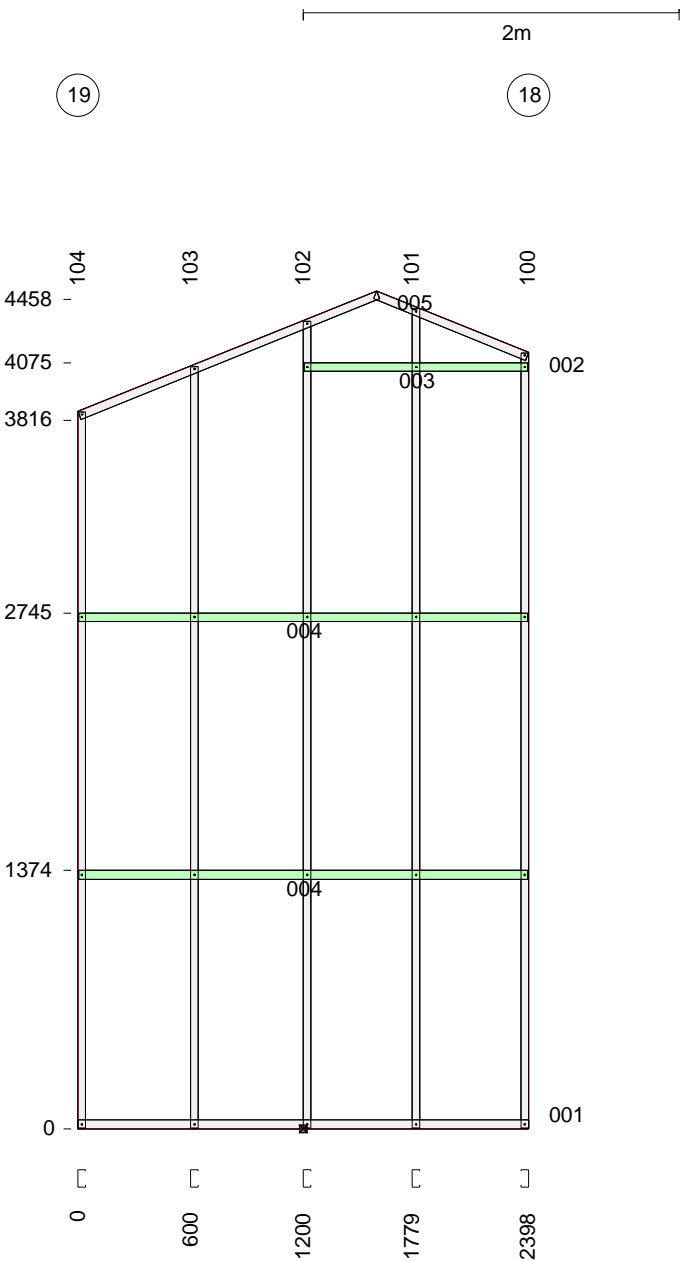
Screws at each end of BRA-1.0x30-550 = 3

All dimensions to back of section. Where multiple lintels are used in place of a continuous lintel, it should have a minimum lap length of 450mm. Lintels should not be lapped over an opening.

ASSEMBLY DETAILS	OPENING DIMENSIONS (steel to steel)					PACKING DETAILS		LENGTH	MAX. HEIGHT
	ID	HEIGHT	WIDTH	HEAD	SILL	LEFT SIDE	RIGHT SIDE	2048	3816
ASSEMBLED: FABRICATOR: TRUE STEEL FRAMES CUSTOMER: BERT FARINA CONSTRUCTION CLIENT REF: 4 REDWOOD ST, ROSTREVOR								DETAILER	DETAILED
								VANTAGE_DS	21-10-2019
								WEIGHT	SCALE
								33	1:35

DESCRIPTION	Usage	No.	Length	Mat.	Qty
U904475G550	BOTPLATE	001	2398	0.75	1
U904475G550	TOPPLATE	002	872	0.75	1
U904475G550	NOGGING	003	1188	0.75	1
U904475G550	NOGGING	004	2388	0.75	2
U904475G550	TOPPLATE	005	1714	0.75	1
C9075ra	STUD	100	4127	0.75	1
C9075ra	STUD	101	4361	0.75	1
C9075ra	STUD	102	4297	0.75	1
C9075ra	STUD	103	4054	0.75	1
C9075ra	STUD	104	3812	0.75	1
WALLTITE	SCREW	N/A	-	-	46

Length crib: 2
Floor RL: 3217
INTERNAL wall

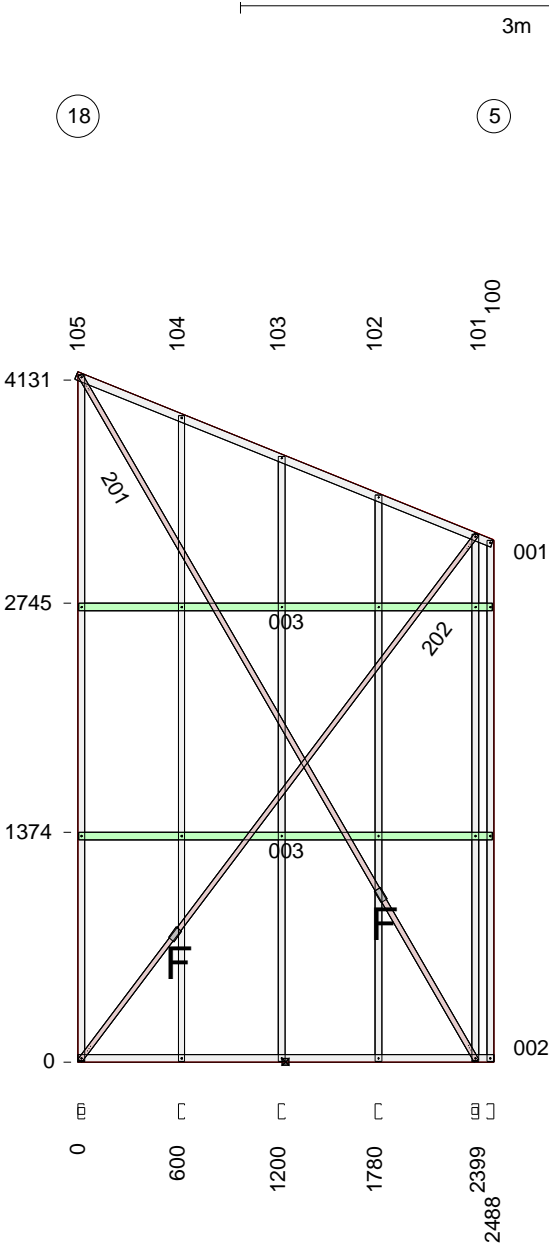


All dimensions to back of section. Where multiple lintels are used in place of a continuous lintel, it should have a minimum lap length of 450mm. Lintels should not be lapped over an opening.

ASSEMBLY DETAILS	OPENING DIMENSIONS (steel to steel)					PACKING DETAILS		LENGTH	MAX. HEIGHT
	ID	HEIGHT	WIDTH	HEAD	SILL	LEFT SIDE	RIGHT SIDE	2398	4458
ASSEMBLED: FABRICATOR: TRUE STEEL FRAMES CUSTOMER: BERT FARINA CONSTRUCTION CLIENT REF: 4 REDWOOD ST, ROSTREVOR								DETAILER	DETAILED
								VANTAGE_DS	21-10-2019
								WEIGHT	SCALE
								34	1:40

DESCRIPTION	Usage	No.	Length	Mat.	Qty
U904475G550	TOPPLATE	001	2684	0.75	1
U904475G550	BOTPLATE	002	2488	0.75	1
U904475G550	NOGGING	003	2478	0.75	2
C9075ra	STUD	100	3121	0.75	1
C9075ra	STUD	101	3199	0.75	1
C9075ra	STUD	102	3391	0.75	1
C9075ra	STUD	103	3626	0.75	1
C9075ra	STUD	104	3868	0.75	1
C9075ra	STUD	105	4153	0.75	1
BRA-1.0x30-550	Brace	201	4743	1.0	1
BRA-1.0x30-550	Brace	202	3946	1.0	1
TENSIONER_SET	Tensnr	N/A	0		2
Washer40x40x5	HOLDDOWN	N/A		5	2
SCREW-M6-1PX18-TEK	SCREW	N/A	-	-	12
WALLTITE	SCREW	N/A	-	-	48

Length crib: 2
Floor RL: 3217
INTERNAL wall



Screws at each end of BRA-1.0x30-550 = 3

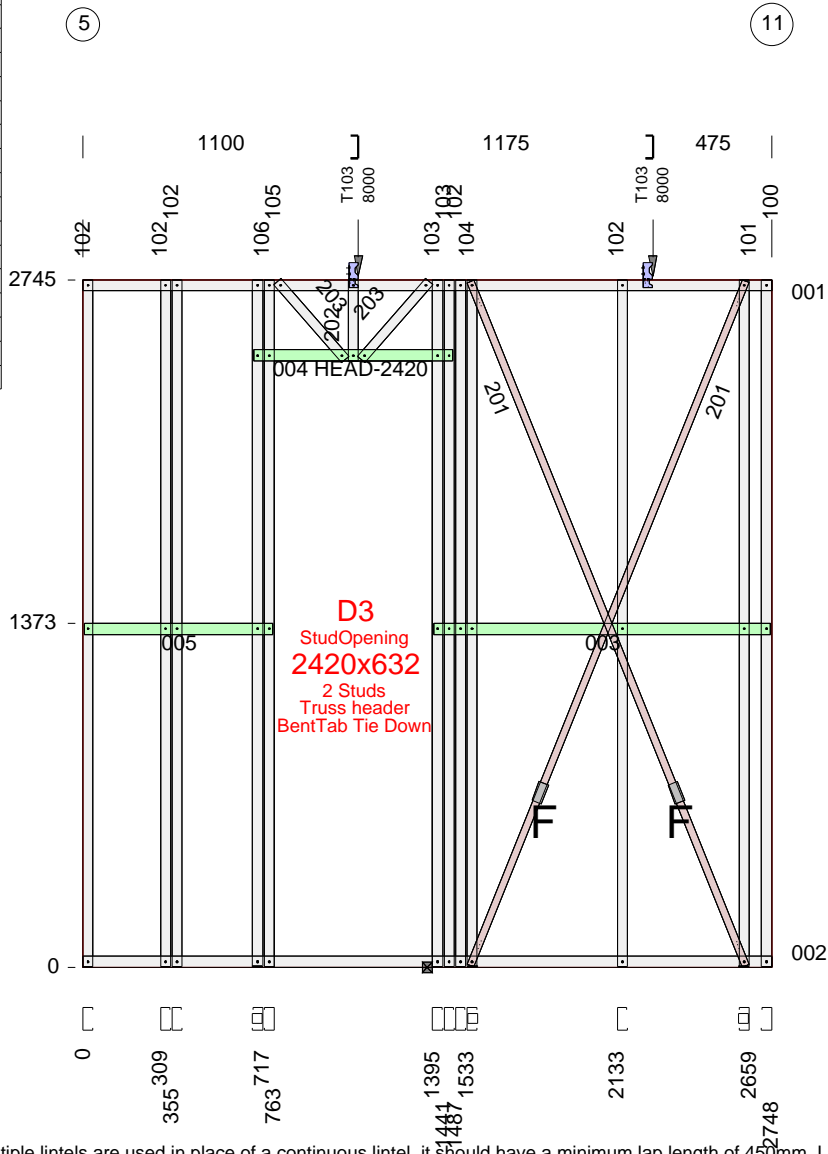
All dimensions to back of section. Where multiple lintels are used in place of a continuous lintel, it should have a minimum lap length of 450mm. Lintels should not be lapped over an opening.

ASSEMBLY DETAILS	OPENING DIMENSIONS (steel to steel)					PACKING DETAILS		LENGTH	MAX. HEIGHT
	ID	HEIGHT	WIDTH	HEAD	SILL	LEFT SIDE	RIGHT SIDE	2488	4131
ASSEMBLED: FABRICATOR: TRUE STEEL FRAMES CUSTOMER: BERT FARINA CONSTRUCTION CLIENT REF: 4 REDWOOD ST, ROSTREVOR								DETAILER	DETAILED
								VANTAGE_DS	21-10-2019
								WEIGHT	SCALE
								36	1:45

DESCRIPTION	Usage	No.	Length	Mat.	Qty
U904475G550	TOPPLATE	001	2748	0.75	1
U904475G550	BOTPLATE	002	2748	0.75	1
U904475G550	NOGGING	003	1343	0.75	1
U904475G550	HEAD	004	794	0.75	1
U904475G550	NOGGING	005	753	0.75	1
C9075ra	STUD	100	2741	0.75	1
C9075ra	STUD	101	2783	0.75	1
C9075ra	STUD	102	2741	0.75	5
C9075ra	STUD	103	2741	0.75	2
C9075ra	STUD	104	2783	0.75	1
C9075ra	STUD	105	2741	0.75	1
C9075ra	STUD	106	2783	0.75	1
BRA-1.0x30-550	Brace	201	2945	1.0	2
C9075ra	WEB	202	321	0.75	1
C9075ra	WEB	203	412	0.75	2
MULTIGRIP	TIEDOWN	N/A		3	2
Washer40x40x5	HOLDDOWN	N/A		5	3
TENSIONER_SET	Tensnr	N/A	0	N/A	2
SCREW-12-14x20-HEX	SCREW	N/A	-	-	8
SCREW-M6-1PX18-TEK	SCREW	N/A	-	-	16
WALLTITE	SCREW	N/A	-	-	92

Length crib: 2
Floor RL: 3217
INTERNAL wall

Screws at each end of BRA-1.0x30-550 = 3



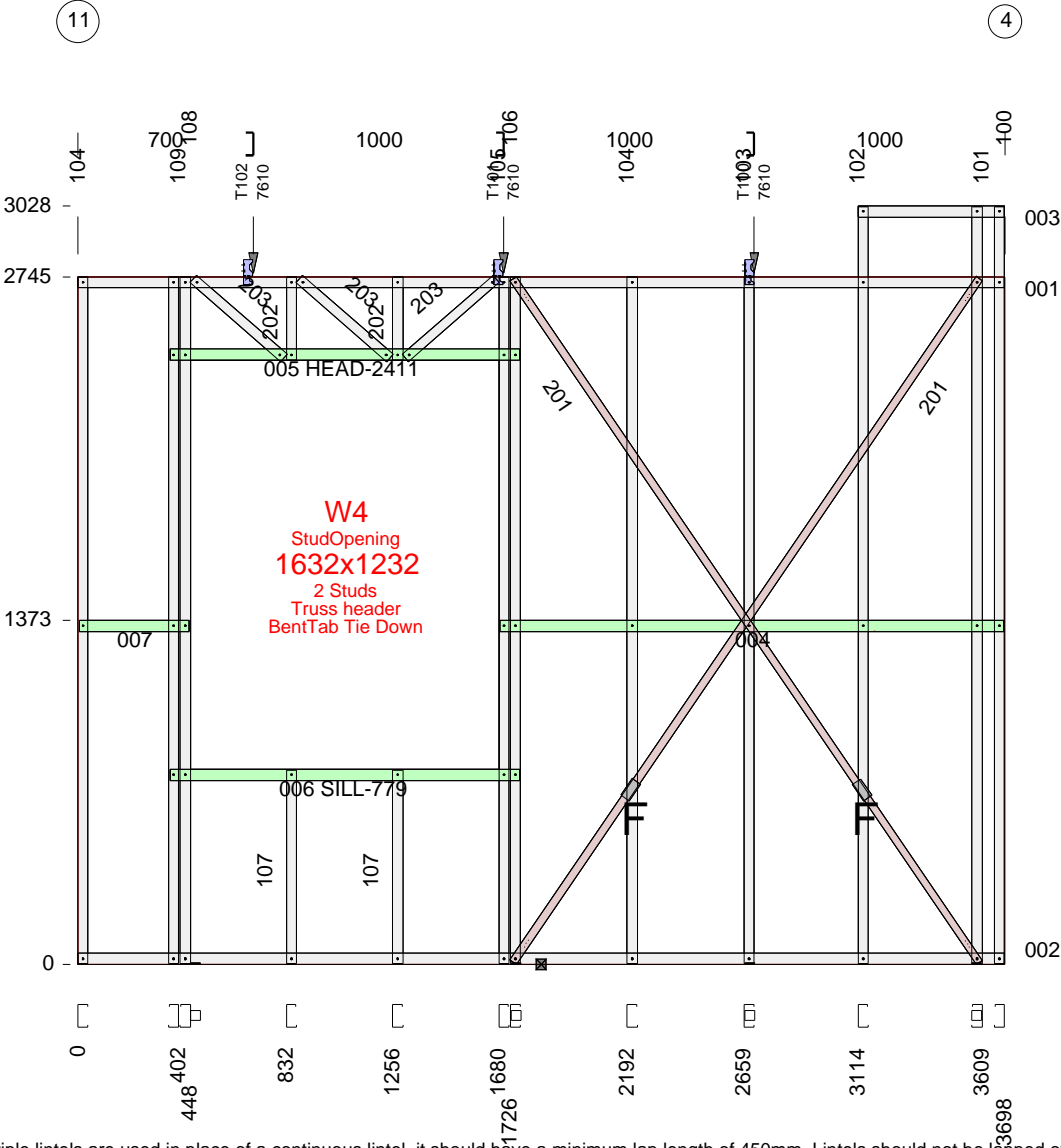
All dimensions to back of section. Where multiple lintels are used in place of a continuous lintel, it should have a minimum lap length of 450mm. Lintels should not be lapped over an opening.

ASSEMBLY DETAILS	OPENING DIMENSIONS (steel to steel)				PACKING DETAILS		LENGTH	MAX. HEIGHT
	ID	MANUF.	CAT NO.	UNIT DIM.	LEFT SIDE	RIGHT SIDE	2748	2745
ASSEMBLED:	D3	STUDOPEN	StudOpening	2420x632			DETAILER	DETAILED
FABRICATOR: TRUE STEEL FRAMES							VANTAGE_DS	21-10-2019
CUSTOMER: BERT FARINA CONSTRUCTION							WEIGHT	SCALE
CLIENT REF: 4 REDWOOD ST, ROSTREVOR							48	1:30

DESCRIPTION	Usage	No.	Length	Mat.	Qty
U904475G550	TOPPLATE	001	3698	0.75	1
U904475G550	BOTPLATE	002	3698	0.75	1
U904475G550	TOPPLATE	003	584	0.75	1
U904475G550	NOGGING	004	2008	0.75	1
U904475G550	HEAD	005	1394	0.75	1
U904475G550	SILL	006	1394	0.75	1
U904475G550	NOGGING	007	438	0.75	1
C9075ra	STUD	100	3024	0.75	1
C9075ra	STUD	101	3066	0.75	1
C9075ra	STUD	102	3024	0.75	1
C9075ra	STUD	103	2783	0.75	1
C9075ra	STUD	104	2741	0.75	2
C9075ra	STUD	105	2741	0.75	1
C9075ra	STUD	106	2783	0.75	1
C9075ra	STUD	107	775	0.75	2
C9075ra	STUD	108	2783	0.75	1
C9075ra	STUD	109	2741	0.75	1
BRA-1.0x30-550	Brace	201	3303	1.0	2
C9075ra	WEB	202	330	0.75	2
C9075ra	WEB	203	481	0.75	3
MULTIGRIP	TIEDOWN	N/A		3	3
Washer40x40x5	HOLDDOWN	N/A		5	4
TENSIONER_SET	Tensnr	N/A	0	N/A	2
SCREW-12-14x20-HEX	SCREW	N/A	-	-	12
SCREW-M6-1PX18-TEK	SCREW	N/A	-	-	18
WALLTITE	SCREW	N/A	-	-	110

Length crib: 2
Floor RL: 3217
INTERNAL wall

Screws at each end of BRA-1.0x30-550 = 3

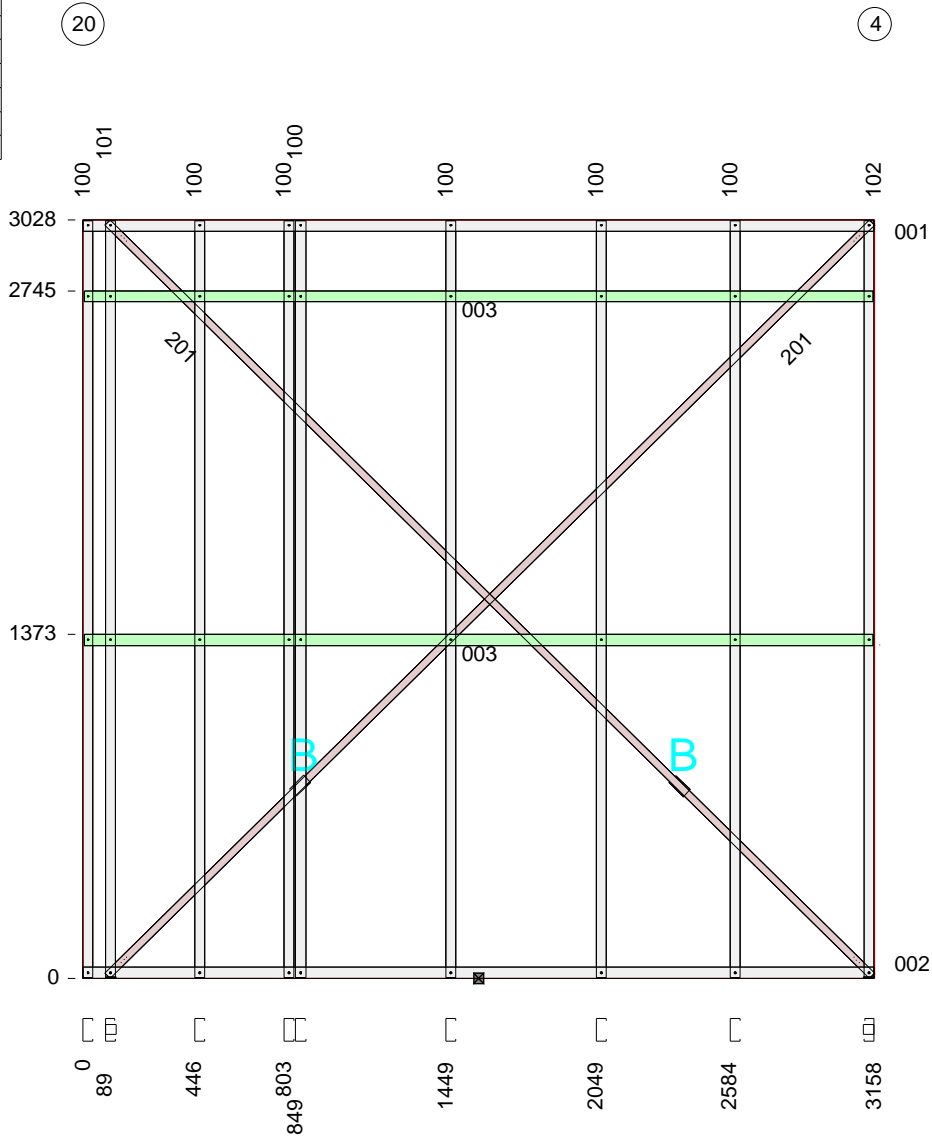


All dimensions to back of section. Where multiple lintels are used in place of a continuous lintel, it should have a minimum lap length of 450mm. Lintels should not be lapped over an opening.

ASSEMBLY DETAILS	OPENING DIMENSIONS (steel to steel)				PACKING DETAILS		LENGTH	MAX. HEIGHT
	ID	MANUF.	CAT NO.	UNIT DIM.	LEFT SIDE	RIGHT SIDE	3698	2745
ASSEMBLED:	W4	STUDOPEN	StudOpening	1632x1232			DETAILER	DETAILED
FABRICATOR: TRUE STEEL FRAMES							VANTAGE_DS	21-10-2019
CUSTOMER: BERT FARINA CONSTRUCTION							WEIGHT	SCALE
CLIENT REF: 4 REDWOOD ST, ROSTREVOR							51	1:30

DESCRIPTION	Usage	No.	Length	Mat.	Qty
U904475G550	TOPPLATE	001	3158	0.75	1
U904475G550	BOTPLATE	002	3158	0.75	1
U904475G550	NOGGING	003	3148	0.75	2
C9075ra	STUD	100	3024	0.75	7
C9075ra	STUD	101	3066	0.75	1
C9075ra	STUD	102	3066	0.75	1
BRA-1.0x30-550	Brace	201	4285	1.0	2
TENSIONER_SET	Tensnr	N/A	0	N/A	2
Washer40x40x5	HOLDDOWN	N/A		5	2
SCREW-M6-1PX18-TEK	SCREW	N/A	-	-	12
WALLTITE	SCREW	N/A	-	-	72

Length crib: 2
Floor RL: 3217
INTERNAL wall



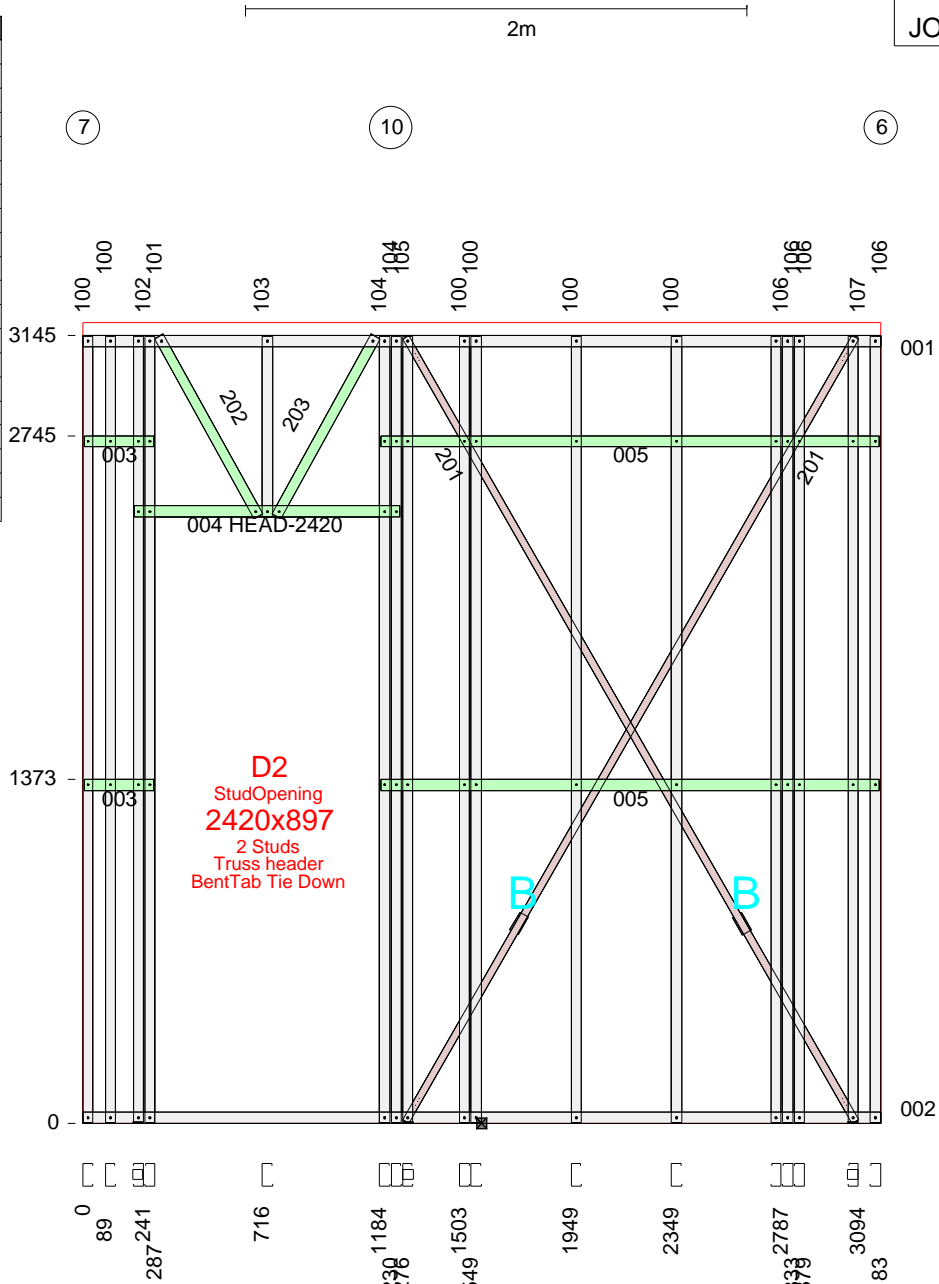
All dimensions to back of section. Where multiple lintels are used in place of a continuous lintel, it should have a minimum lap length of 450mm. Lintels should not be lapped over an opening.

ASSEMBLY DETAILS	OPENING DIMENSIONS (steel to steel)					PACKING DETAILS		LENGTH	MAX. HEIGHT
	ID	HEIGHT	WIDTH	HEAD	SILL	LEFT SIDE	RIGHT SIDE	3158	3028
ASSEMBLED: FABRICATOR: TRUE STEEL FRAMES CUSTOMER: BERT FARINA CONSTRUCTION CLIENT REF: 4 REDWOOD ST, ROSTREVOR								DETAILER	DETAILED
								VANTAGE_DS	21-10-2019
								WEIGHT	SCALE
								45	1:30

DESCRIPTION	Usage	No.	Length	Mat.	Qty
U904475G550	TOPPLATE	001	3183	0.75	1
U904475G550	BOTPLATE	002	3183	0.75	1
U904475G550	NOGGING	003	277	0.75	2
U904475G550	HEAD	004	1059	0.75	1
U904475G550	NOGGING	005	1989	0.75	2
C9075ra	STUD	100	3141	0.75	6
C9075ra	STUD	101	3141	0.75	1
C9075ra	STUD	102	3183	0.75	1
C9075ra	STUD	103	721	0.75	1
C9075ra	STUD	104	3141	0.75	2
C9075ra	STUD	105	3183	0.75	1
C9075ra	STUD	106	3141	0.75	4
C9075ra	STUD	107	3183	0.75	1
BRA-1.0x30-550	Brace	201	3608	1.0	2
C9075ra	WEB	202	818	0.75	1
C9075ra	WEB	203	818	0.75	1
Washer40x40x5	HOLDDOWN	N/A		5	3
TENSIONER_SET	Tensnr	N/A	0	N/A	2
SCREW-M6-1PX18-TEK	SCREW	N/A	-	-	12
WALLTITE	SCREW	N/A	-	-	148

Length crib: 2
Floor RL: 3217
INTERNAL wall

Screws at each end of BRA-1.0x30-550 = 3

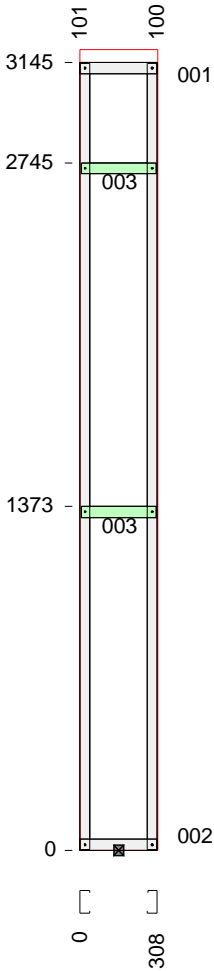


All dimensions to back of section. Where multiple lintels are used in place of a continuous lintel, it should have a minimum lap length of 450mm. Lintels should not be lapped over an opening.

ASSEMBLY DETAILS	OPENING DIMENSIONS (steel to steel)				PACKING DETAILS		LENGTH	MAX. HEIGHT
	ID	MANUF.	CAT NO.	UNIT DIM.	LEFT SIDE	RIGHT SIDE	3183	3195
ASSEMBLED:	D2	STUDOPEN	StudOpening	2420x897			DETAILER	DETAILED
FABRICATOR: TRUE STEEL FRAMES							VANTAGE_DS	21-10-2019
CUSTOMER: BERT FARINA CONSTRUCTION							WEIGHT	SCALE
CLIENT REF: 4 REDWOOD ST, ROSTREVOR							72	1:30

DESCRIPTION	Usage	No.	Length	Mat.	Qty
U904475G550	TOPPLATE	001	308	0.75	1
U904475G550	BOTPLATE	002	308	0.75	1
U904475G550	NOGGING	003	298	0.75	2
C9075ra	STUD	100	3141	0.75	1
C9075ra	STUD	101	3141	0.75	1
WALLTITE	SCREW	N/A	-	-	16

Length crib: 2
Floor RL: 3217
INTERNAL wall



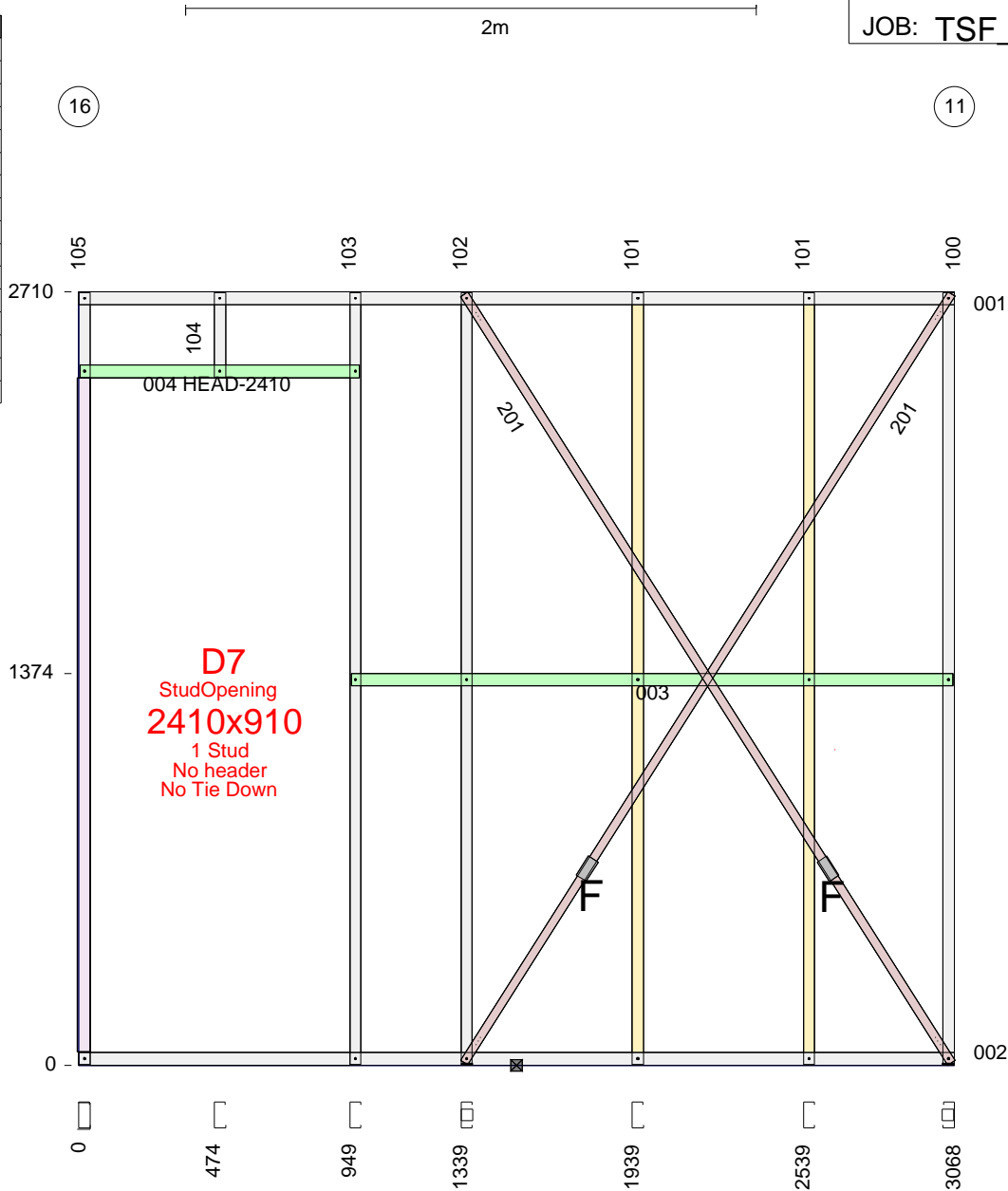
All dimensions to back of section. Where multiple lintels are used in place of a continuous lintel, it should have a minimum lap length of 450mm. Lintels should not be lapped over an opening.

ASSEMBLY DETAILS	OPENING DIMENSIONS (steel to steel)					PACKING DETAILS		LENGTH	MAX. HEIGHT
	ID	HEIGHT	WIDTH	HEAD	SILL	LEFT SIDE	RIGHT SIDE	308	3195
ASSEMBLED: FABRICATOR: TRUE STEEL FRAMES CUSTOMER: BERT FARINA CONSTRUCTION CLIENT REF: 4 REDWOOD ST, ROSTREVOR								DETAILER	DETAILED
								VANTAGE_DS	21-10-2019
								WEIGHT	SCALE
								8	1:30

DESCRIPTION	Usage	No.	Length	Mat.	Qty
U904475G550	TOPPLATE	001	3068	0.75	1
U904475G550	BOTPLATE	002	3068	0.75	1
U904475G550	NOGGING	003	2109	0.75	1
U904475G550	HEAD	004	979	0.75	1
C9075ra	STUD	100	2748	0.75	1
C9055ra	STUD	101	2706	0.55	2
C9075ra	STUD	102	2748	0.75	1
C9075ra	STUD	103	2706	0.75	1
C9075ra	STUD	104	296	0.75	1
C9075ra	STUD	105	2706	0.75	1
BRA-1.0x30-550	Brace	201	3189	1.0	2
U904475G550	PACKER	800	2361	0.75	1
TENSIONER_SET	Tensnr	N/A	0	N/A	2
Washer40x40x5	HOLDDOWN	N/A		5	2
SCREW-M6-1PX18-TEK	SCREW	N/A	-	-	12
WALLTITE	SCREW	N/A	-	-	42

Length crib: 2
Floor RL: 3217
INTERNAL wall

Screws at each end of BRA-1.0x30-550 = 3



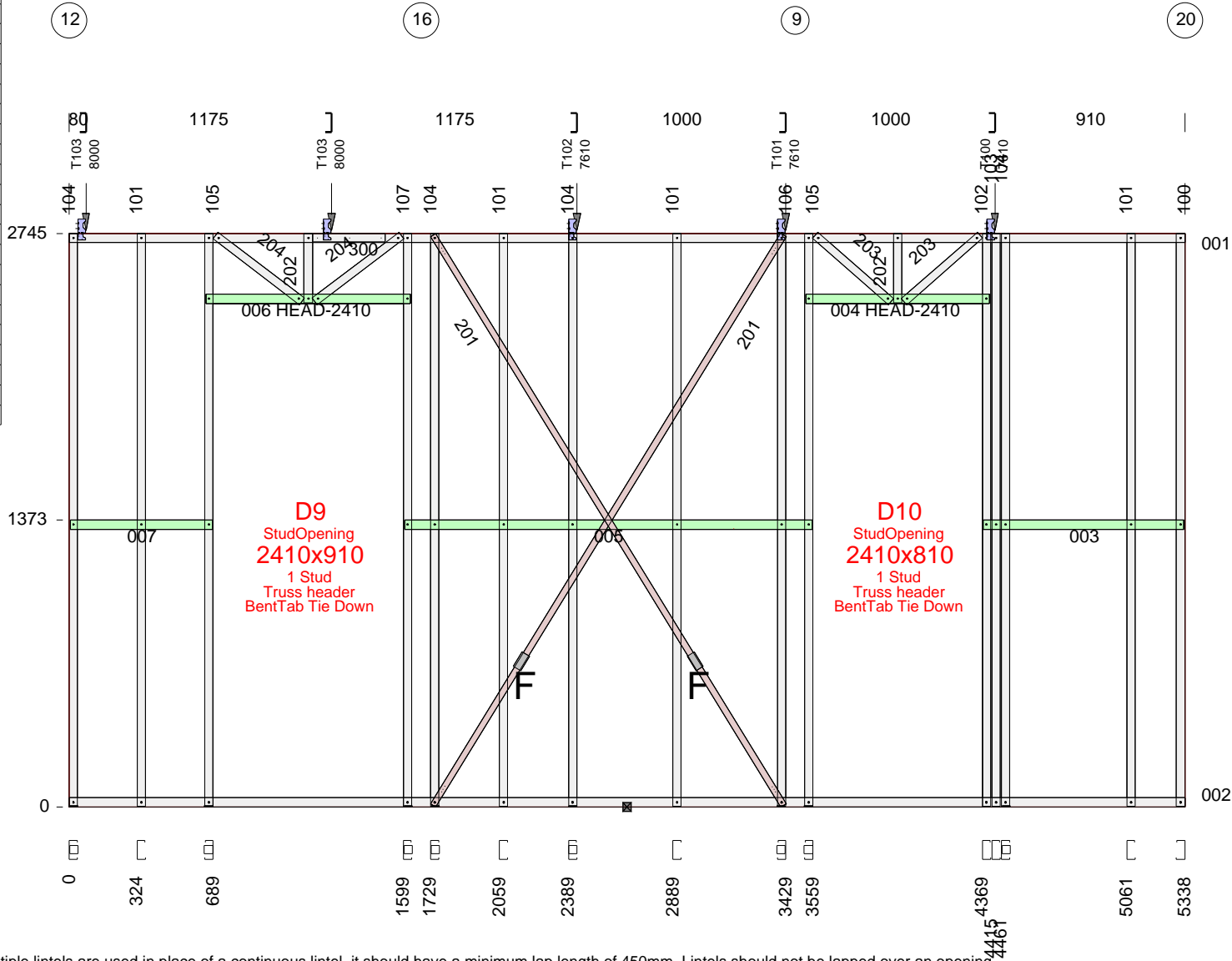
All dimensions to back of section. Where multiple lintels are used in place of a continuous lintel, it should have a minimum lap length of 450mm. Lintels should not be lapped over an opening.

ASSEMBLY DETAILS	OPENING DIMENSIONS (steel to steel)				PACKING DETAILS		LENGTH	MAX. HEIGHT
	ID	MANUF.	CAT NO.	UNIT DIM.	LEFT SIDE	RIGHT SIDE	3068	2710
ASSEMBLED:	D7	STUDOPEN	StudOpening	2410x910			DETAILER	DETAILED
FABRICATOR: TRUE STEEL FRAMES							VANTAGE_DS	21-10-2019
CUSTOMER: BERT FARINA CONSTRUCTION							WEIGHT	SCALE
CLIENT REF: 4 REDWOOD ST, ROSTREVOR							31	1:25

DESCRIPTION	Usage	No.	Length	Mat.	Qty
U904475G550	TOPPLATE	001	5338	0.75	1
U904475G550	BOTPLATE	002	5338	0.75	1
U904475G550	NOGGING	003	959	0.75	1
U904475G550	HEAD	004	880	0.75	1
U904475G550	NOGGING	005	1950	0.75	1
U904475G550	HEAD	006	980	0.75	1
U904475G550	NOGGING	007	679	0.75	1
C9075ra	STUD	100	2741	0.75	1
C9075ra	STUD	101	2741	0.75	4
C9075ra	STUD	102	2741	0.75	1
C9075ra	STUD	103	2741	0.75	1
C9075ra	STUD	104	2783	0.75	4
C9075ra	STUD	105	2783	0.75	2
C9075ra	STUD	106	2783	0.75	1
C9075ra	STUD	107	2783	0.75	1
BRA-1.0x30-550	Brace	201	3204	1.0	2
C9075ra	WEB	202	331	0.75	2
C9075ra	WEB	203	482	0.75	2
C9075ra	WEB	204	521	0.75	2
C9075ra	STIFFENER	300	346	0.75	1
MULTIGRIP	TIEDOWN	N/A	3		5
Washer40x40x5	HOLDDOWN	N/A	5		8
TENSIONER_SET	Tensnr	N/A	0	N/A	2
SCREW-12-14x20-HEX	SCREW	N/A	-	-	20
SCREW-M6-1PX18-TEK	SCREW	N/A	-	-	22
WALLTITE	SCREW	N/A	-	-	128

Length crib: 2
Floor RL: 3217
INTERNAL wall

Screws at each end of BRA-1.0x30-550 = 3

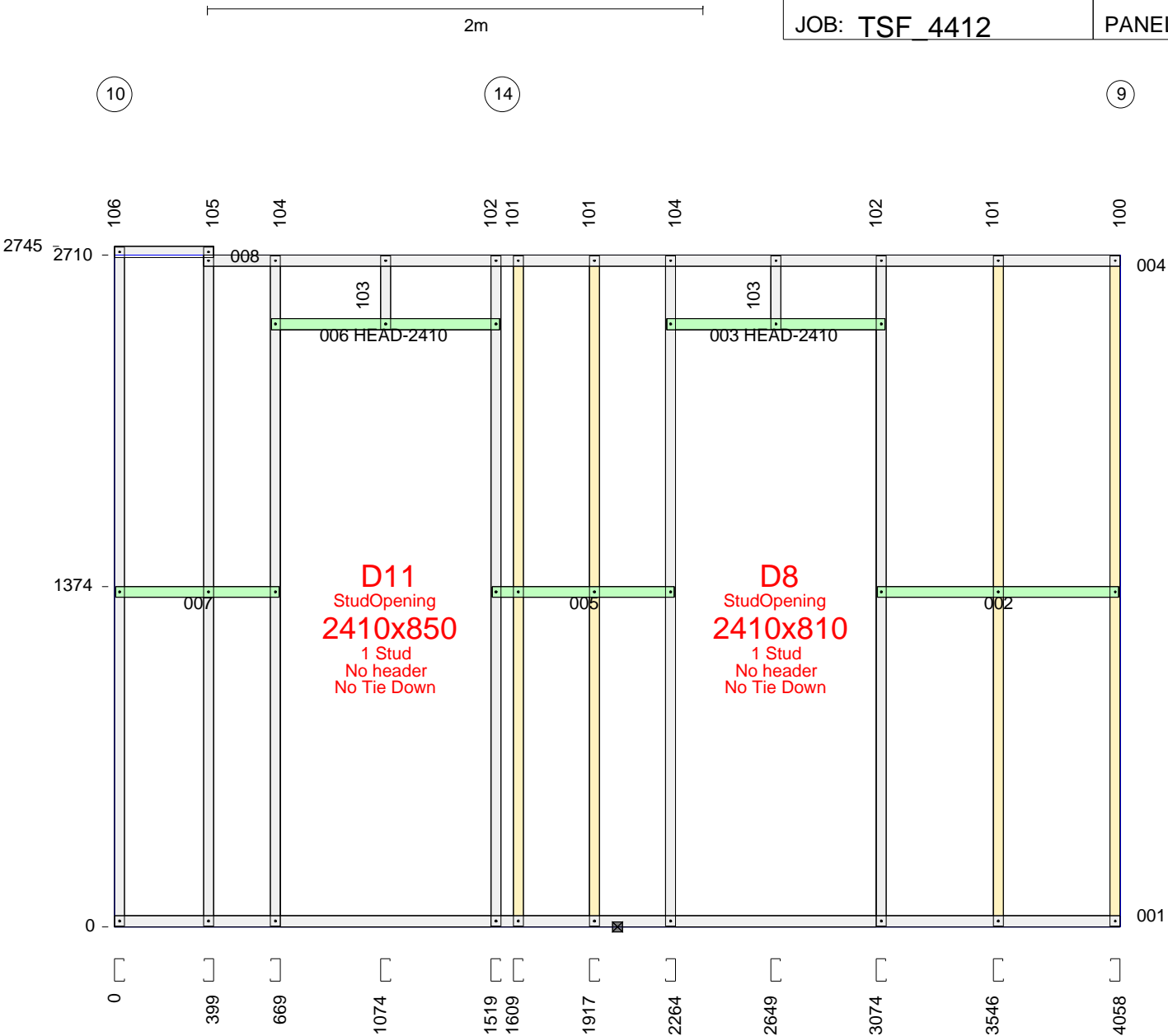


All dimensions to back of section. Where multiple lintels are used in place of a continuous lintel, it should have a minimum lap length of 450mm. Lintels should not be lapped over an opening.

ASSEMBLY DETAILS	OPENING DIMENSIONS (steel to steel)				PACKING DETAILS		LENGTH	MAX. HEIGHT
	ID	MANUF.	CAT NO.	UNIT DIM.	LEFT SIDE	RIGHT SIDE	5338	2745
ASSEMBLED: FABRICATOR: TRUE STEEL FRAMES CUSTOMER: BERT FARINA CONSTRUCTION CLIENT REF: 4 REDWOOD ST, ROSTREVOR	D10	STUDOPEN	StudOpening	2410x810			DETAILER	DETAILED
	D9	STUDOPEN	StudOpening	2410x910			VANTAGE_DS	21-10-2019
							WEIGHT	SCALE
							67	1:30

DESCRIPTION	Usage	No.	Length	Mat.	Qty
U904475G550	BOTPLATE	001	4058	0.75	1
U904475G550	NOGGING	002	974	0.75	1
U904475G550	HEAD	003	880	0.75	1
U904475G550	TOPPLATE	004	3699	0.75	1
U904475G550	NOGGING	005	735	0.75	1
U904475G550	HEAD	006	920	0.75	1
U904475G550	NOGGING	007	659	0.75	1
U904475G550	TOPPLATE	008	399	0.75	1
C9055ra	STUD	100	2706	0.55	1
C9055ra	STUD	101	2706	0.55	3
C9075ra	STUD	102	2706	0.75	2
C9075ra	STUD	103	296	0.75	2
C9075ra	STUD	104	2706	0.75	2
C9075ra	STUD	105	2741	0.75	1
C9075ra	STUD	106	2741	0.75	1
WALLTITE	SCREW	N/A	-	-	78

Length crib: 2
Floor RL: 3217
INTERNAL wall

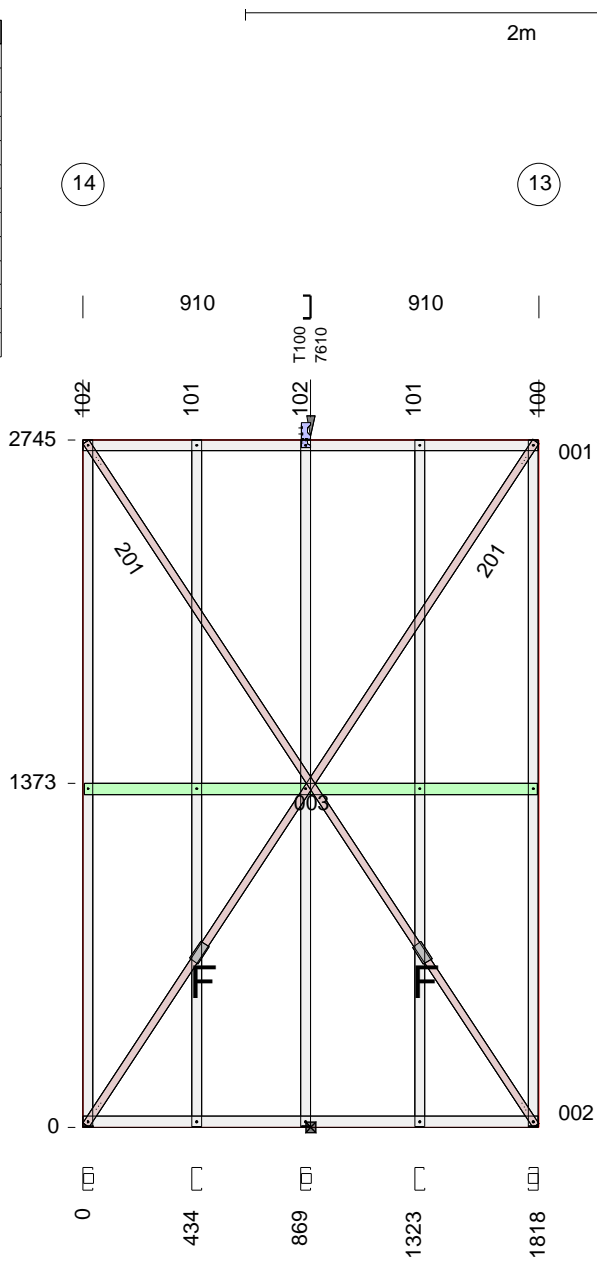


All dimensions to back of section. Where multiple lintels are used in place of a continuous lintel, it should have a minimum lap length of 450mm. Lintels should not be lapped over an opening.

ASSEMBLY DETAILS	OPENING DIMENSIONS (steel to steel)				PACKING DETAILS		LENGTH	MAX. HEIGHT
	ID	MANUF.	CAT NO.	UNIT DIM.	LEFT SIDE	RIGHT SIDE	4058	2710
ASSEMBLED: FABRICATOR: TRUE STEEL FRAMES CUSTOMER: BERT FARINA CONSTRUCTION CLIENT REF: 4 REDWOOD ST, ROSTREVOR	D11 D8	STUDOPEN STUDOPEN	StudOpening StudOpening	2410x850 2410x810			DETAILER	DETAILED
							VANTAGE_DS	21-10-2019
							WEIGHT	SCALE
							40	1:25

DESCRIPTION	Usage	No.	Length	Mat.	Qty
U904475G550	TOPPLATE	001	1818	0.75	1
U904475G550	BOTPLATE	002	1818	0.75	1
U904475G550	NOGGING	003	1808	0.75	1
C9075ra	STUD	100	2783	0.75	1
C9075ra	STUD	101	2741	0.75	2
C9075ra	STUD	102	2783	0.75	2
BRA-1.0x30-550	Brace	201	3267	1.0	2
Multigrip	TIEDOWN	N/A		3	1
TENSIONER_SET	Tensnr	N/A	0	N/A	2
Washer40x40x5	HOLDDOWN	N/A		5	3
SCREW-12-14x20-HEX	SCREW	N/A	-	-	4
SCREW-M6-1PX18-TEK	SCREW	N/A	-	-	14
WALLTITE	SCREW	N/A	-	-	30

Length crib: 2
Floor RL: 3217
INTERNAL wall



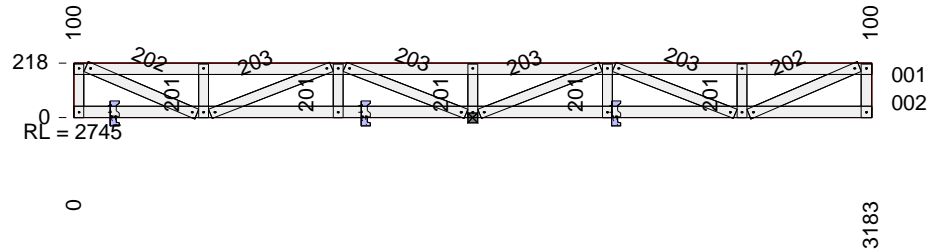
Screws at each end of BRA-1.0x30-550 = 3

All dimensions to back of section. Where multiple lintels are used in place of a continuous lintel, it should have a minimum lap length of 450mm. Lintels should not be lapped over an opening.

ASSEMBLY DETAILS	OPENING DIMENSIONS (steel to steel)					PACKING DETAILS		LENGTH	MAX. HEIGHT
	ID	HEIGHT	WIDTH	HEAD	SILL	LEFT SIDE	RIGHT SIDE	1818	2745
ASSEMBLED:								DETAILER	DETAILED
FABRICATOR: TRUE STEEL FRAMES								VANTAGE_DS	21-10-2019
CUSTOMER: BERT FARINA CONSTRUCTION								WEIGHT	SCALE
CLIENT REF: 4 REDWOOD ST, ROSTREVOR								23	1:30

DESCRIPTION	Usage	No.	Length	Mat.	Qty
U904475G550	TOPPLATE	001	3183	0.75	1
U904475G550	BOTPLATE	002	3183	0.75	1
C9075ra	STUD	100	214	0.75	2
C9075ra	WEB	201	214	0.75	5
C9075ra	WEB	202	481	0.75	2
C9075ra	WEB	203	518	0.75	4
MULTIGRIP	TIEDOWN	N/A		3	3
SCREW-12-14x20-HEX	SCREW	N/A	-	-	12
SCREW-M6-1PX18-TEK	SCREW	N/A	-	-	6
WALLTITE	SCREW	N/A	-	-	52

Length crib: 2
Floor RL: 3217
INTERNAL wall



All dimensions to back of section. Where multiple lintels are used in place of a continuous lintel, it should have a minimum lap length of 450mm. Lintels should not be lapped over an opening.

ASSEMBLY DETAILS	OPENING DIMENSIONS (steel to steel)					PACKING DETAILS		LENGTH	MAX. HEIGHT
	ID	HEIGHT	WIDTH	HEAD	SILL	LEFT SIDE	RIGHT SIDE	3183	218
ASSEMBLED: FABRICATOR: TRUE STEEL FRAMES CUSTOMER: BERT FARINA CONSTRUCTION CLIENT REF: 4 REDWOOD ST, ROSTREVOR								DETAILER	DETAILED
								VANTAGE_DS	21-10-2019
								WEIGHT	SCALE
								12	1:30