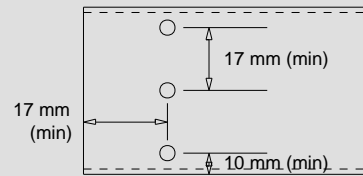
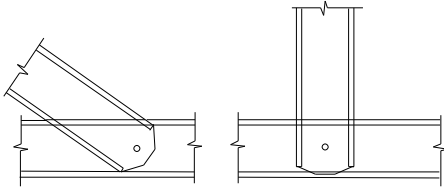


# Truss connections used in job: TSF\_4412 (Sheet 1 of 2)

Minimum screw-spacing = 17 mm  
 Minimum distance from end of part = 17 mm  
 Minimum distance from edge of part = 10 mm

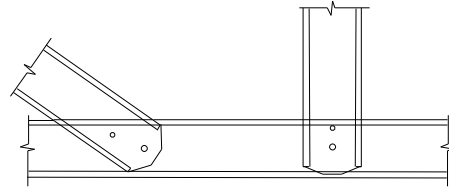


SC-WEB-CHORD-1



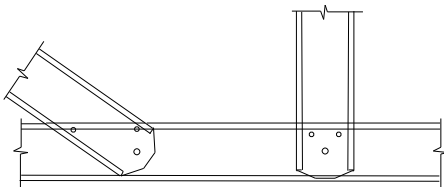
1x TRUSSTITE

SC-WEB-CHORD-2



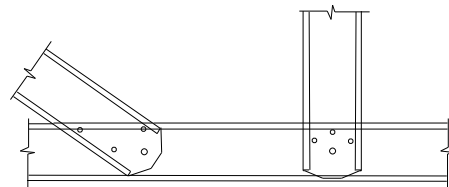
1x TRUSSTITE + 1 x 12-14 x 20 HEX SCREW  
 (16MM MIN EDGE DISTANCE)

SC-WEB-CHORD-3



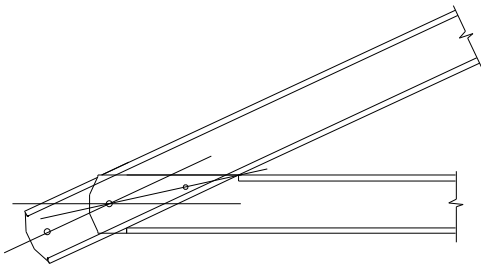
1x TRUSSTITE + 2 x 12-14 x 20 HEX SCREW  
 (16MM MIN EDGE DISTANCE)

SC-WEB-CHORD-4



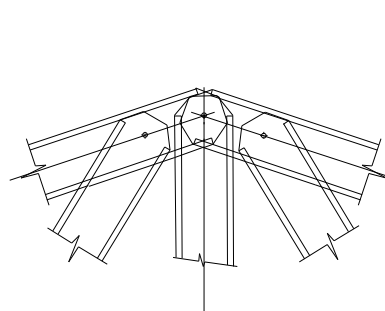
1x TRUSSTITE + 3 x 12-14 x 20 HEX SCREW  
 (16MM MIN EDGE DISTANCE)

SC-HEEL-A-90-75-2

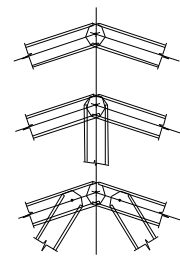


TRUSSTITE + 1x12-14x20 HEX SCREW

SC-APEX-A-90-75-1

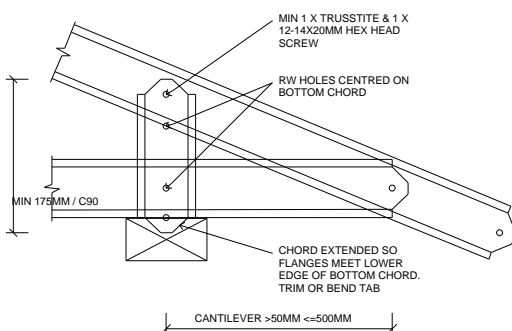


1 x TRUSSTITE

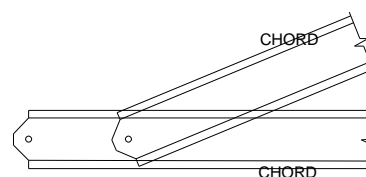


Other Web  
 Configurations

SC-CHORDPT-S-90-55-2



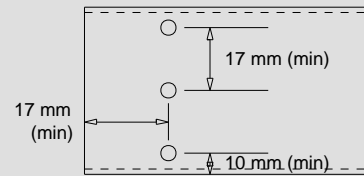
SC-CHORDPT-B-90-75-2



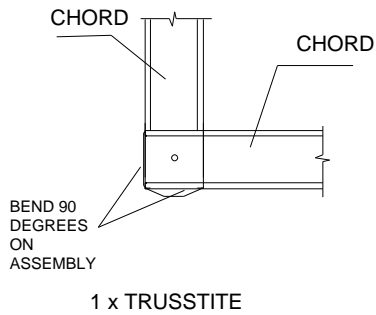
TRUSSTITE + 1 x 12-14x20 HEX SCREW

# Truss connections used in job: TSF\_4412 (Sheet 2 of 2)

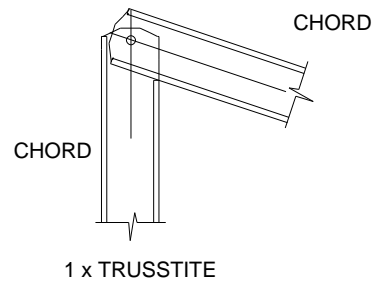
Minimum screw-spacing = 17 mm  
 Minimum distance from end of part = 17 mm  
 Minimum distance from edge of part = 10 mm



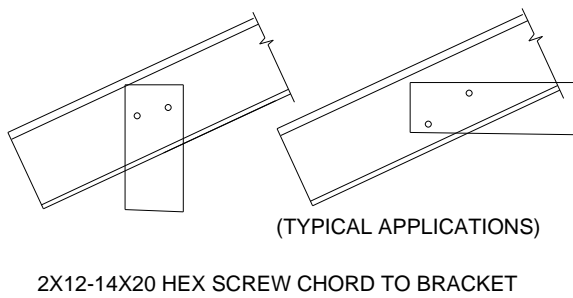
SC-HEEL-HS-F-90-75-1



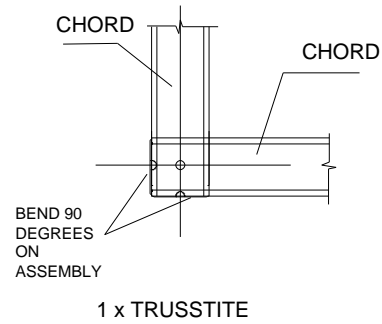
SC-APEX-HS-F-90-75-1



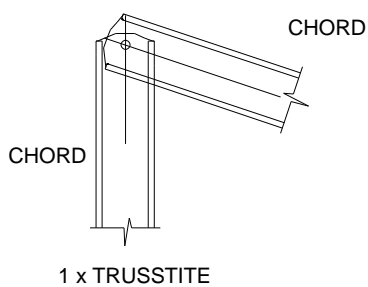
SC-PROP-90-75-2  
(CHORD SUPPORT - SHEAR CON.)



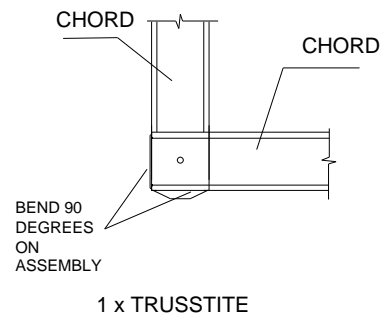
SC-HEEL-HS-90-75-1



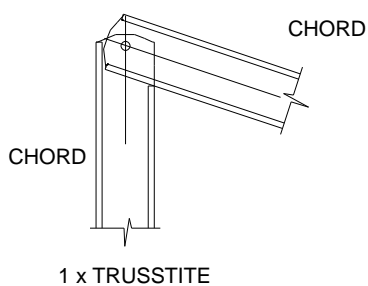
SC-APEX-HS-90-75-1



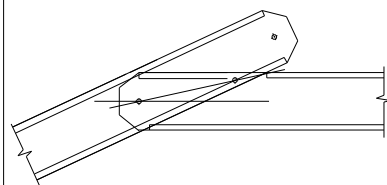
SC-HEEL-HS-F-90-10-1



SC-APEX-HS-F-90-10-1



SC-KNEE-A-90-75-2



Loading: USER-W34N(m,6,-0.2,-0.13,-0.25,0,0,0,0,0,0,-1.1,-1.1,0,1200,0,0,0,0,0,0,600,0,0,A,1,1,1,1,1,,N1,,,,,5000,S,8000,,SEALED,)

smart: YES flush: YES  
restraint: none

LEFT ← → RIGHT

Connection Table		
A	HEEL_HS	SC-HEEL-HS-F-90-75-1
B	APEX_HS	SC-APEX-HS-F-90-75-1

ANALYSIS		QTY
Status	PASS	1
Approved BY		

Chord - Web Connections

040-3

Part Id  
Total no. fasteners at each end of the web

Connection type: (Apex,knee,heel,elbow,chordpt)

Channel depth: Depth of channel -section in mm

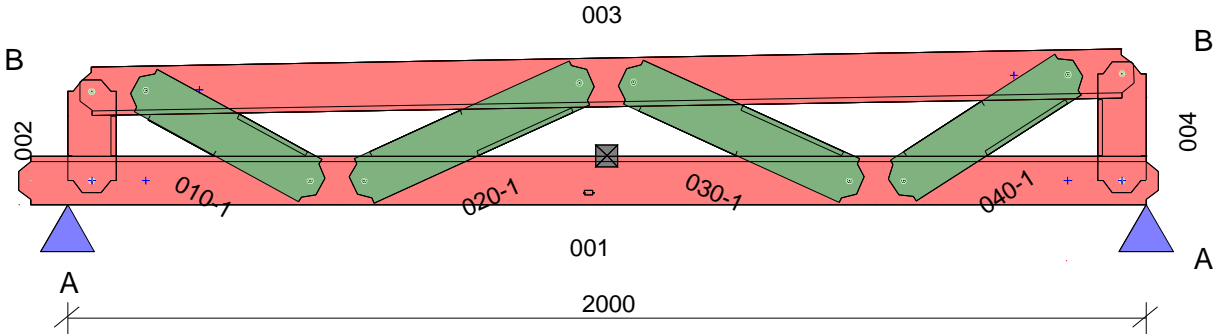
Fastener number: Total number of fasteners used in the connection including locating truss screw and reinforcing screws

SC-HEEL-A-75-10-6

Truss system: ENDUROTRUSS (c) C profile

Connection variant: (A is heel with no stiffener)

Channel gauge: (75 = 0.75 mm BMT 10 = 1.0 mm BMT) etc



Chords and webs placed flange-DOWN.  
Min screws per conn: 1 ( Screw locations diagrammatic only. Refer connection sheet for details.)

PARTS LIST (per truss)					ASSEMBLY DETAILS			TRUSS DETAILS			
DESCRIPTION	No.	LEN	MAT	QTY	APEX HEIGHT	LEFT PITCH	RIGHT PITCH	UNCROPPED LENGTH	UNCROPPED HEIGHT	WEIGHT	
C9075ra	001	2112	0.75	1	N/A	1 deg	-	2112	289	6.9	
C9075ra	002	209.3	0.75	1							
C9075ra	003	1954.3	0.75	1	Precamber = 0.0 mm			DETAILER	DETAILED	SCALE	
C9075ra	004	242.6	0.75	1				VANTAGE_DS	21-10-2019	1:15	
C9075ra	010	391.8	0.75	1				JOB NUMBER		TRUSS	
C9075ra	020	482.4	0.75	1				TSF_4412		T001	
C9075ra	030	484.5	0.75	1	FABRICATOR:	TRUE STEEL FRAMES		Machine Type		ENDUROTRUSS	
C9075ra	040	407	0.75	1	CLIENT REF:	4 REDWOOD ST, ROSTREVOR		Page 1 of 1			
TRUSSTITE				12	CUSTOMER :	BERT FARINA CONSTRUCTION					

Loading: USER-W34N(m,6,-0.2,-0.13,-0.25,0,0,0,0,0,0,-1.1,-1.1,0,1200,0,0,0,0,0,600,0,0,A,1,1,1,1,1,,N1,,,,,5000,S,8000,,SEALED,)

smart: YES flush: YES  
restraint: none

LEFT ← → RIGHT

ANALYSIS		QTY
Status	PASS	1
Approved BY		

Chord - Web Connections

040-3

Part Id  
Total no. fasteners at each end of the web

Connection type:  
(Apex,knee,heel,elbow,chordpt)

SC-HEEL-

Truss system:  
ENDUROTRUSS (c)  
C profile

Channel depth:  
Depth of channel -section in mm

A-75-

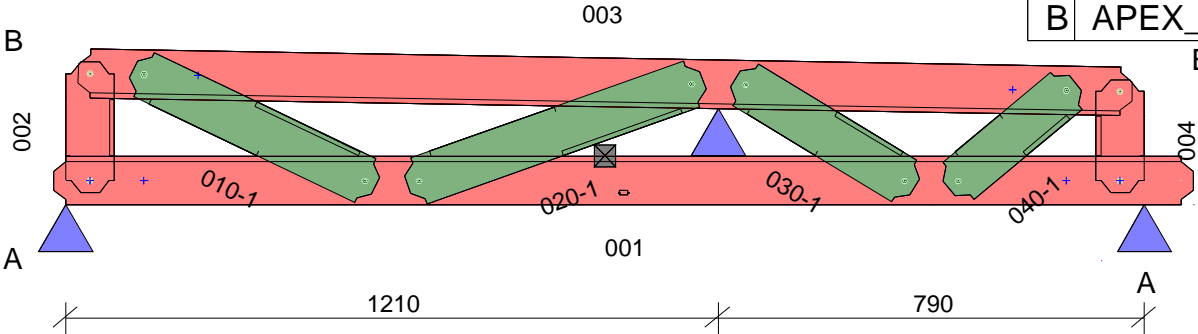
Connection variant:  
(A is heel with no stiffener)

Fastener number:  
Total number of fasteners used in the connection including locating truss screw and reinforcing screws

10-6

Channel gauge:  
(75 = 0.75 mm BMT  
10 = 1.0 mm BMT)  
etc

Connection Table		
A	HEEL_HS	SC-HEEL-HS-F-90-75-1
B	APEX_HS	SC-APEX-HS-F-90-75-1



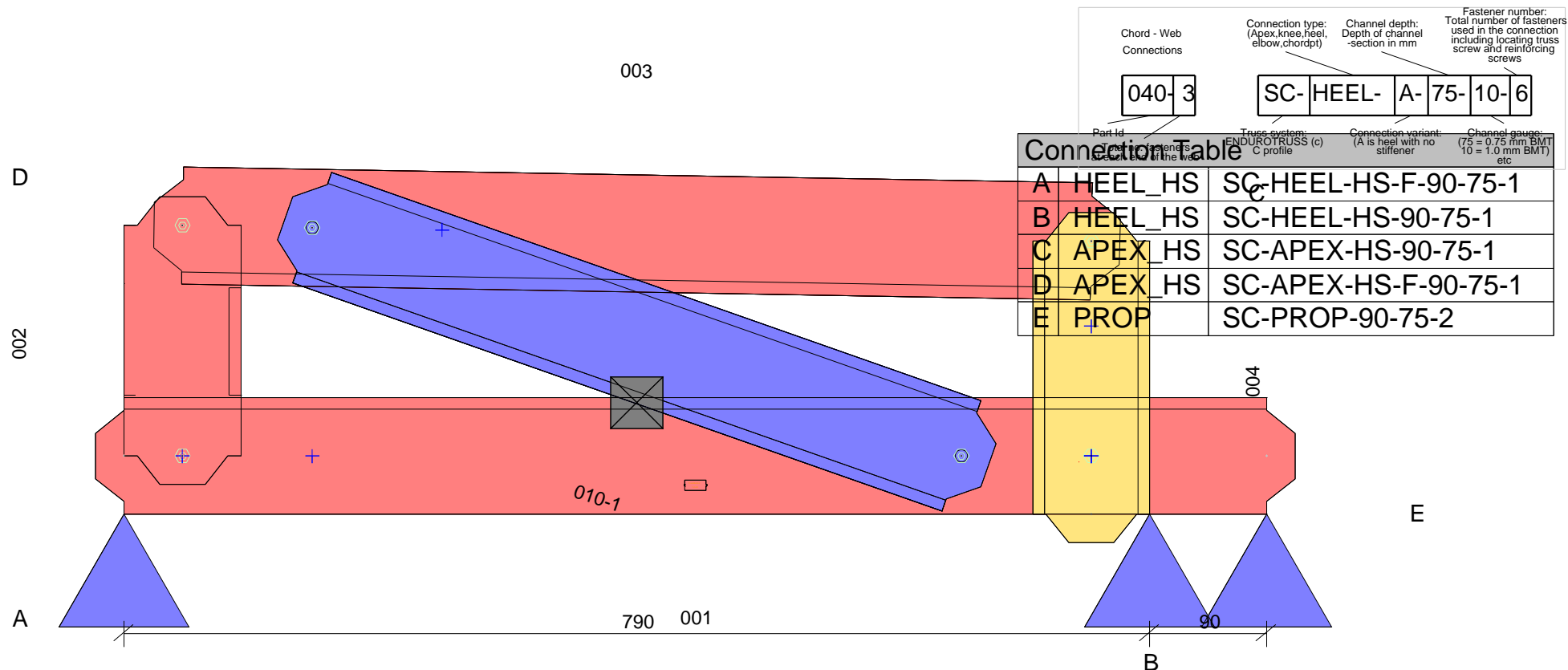
Chords and webs placed flange-DOWN.  
Min screws per conn: 1 ( Screw locations diagrammatic only. Refer connection sheet for details.)

PARTS LIST (per truss)					ASSEMBLY DETAILS			TRUSS DETAILS			
DESCRIPTION	No.	LEN	MAT	QTY	APEX HEIGHT	LEFT PITCH	RIGHT PITCH	UNCROPPED LENGTH	UNCROPPED HEIGHT	WEIGHT	
C9075ra	001	2112	0.75	1	N/A	-	1 deg	2112	289	6.9	
C9075ra	002	242.6	0.75	1							
C9075ra	003	1954.3	0.75	1	Precamber = 0.0 mm			DETAILER	DETAILED	SCALE	
C9075ra	004	209.3	0.75	1				VANTAGE_DS	21-10-2019	1:15	
C9075ra	010	498.7	0.75	1				JOB NUMBER		TRUSS	
C9075ra	020	580.5	0.75	1				TSF_4412		T002	
C9075ra	030	387.7	0.75	1	FABRICATOR:	TRUE STEEL FRAMES					
C9075ra	040	304.7	0.75	1	CLIENT REF:	4 REDWOOD ST, ROSTREVOR		Machine Type		ENDUROTRUSS	
TRUSSTITE				12	CUSTOMER :	BERT FARINA CONSTRUCTION		Page 1 of 1			

smart: YES    flush: NO  
restraint: none

LEFT  RIGHT

ANALYSIS		QTY
Status	PASS	1
Approved BY		



10.00.21 TRUSS-T003-21-10-2019-4:37:43 TrussBuilder Vers 1.2-20 G3=22

Chords placed flange-DOWN, Webs placed flange-UP.

Min screws per conn: 1 ( Screw locations diagrammatic only. Refer connection sheet for details.)

PARTS LIST (per truss)					ASSEMBLY DETAILS			TRUSS DETAILS			
DESCRIPTION	No.	LEN	MAT	QTY	APEX HEIGHT	LEFT PITCH	RIGHT PITCH	UNCROPPED LENGTH	UNCROPPED HEIGHT	WEIGHT	
C9075ra	001	924	0.75	1	N/A	-	1 deg	924	290	3	
C9075ra	002	221.5	0.75	1				DETAILER	DETAILED	SCALE	
C9075ra	003	744.1	0.75	1				VANTAGE_DS	21-10-2019	1:5	
C9075ra	004	254.3	0.75	1				JOB NUMBER		TRUSS	
C9075ra	010	574	0.75	1				TSF_4412		T003	
TRUSSTITE					Precamber = 0.0 mm						
					FABRICATOR:	TRUE STEEL FRAMES					
					CLIENT REF:	4 REDWOOD ST, ROSTREVOR		Machine Type		ENDUROTRUSS	
					CUSTOMER :	BERT FARINA CONSTRUCTION		Page 1 of 1			

smart: YES flush: YES  
restraint: none

LEFT ← → RIGHT

ANALYSIS		QTY
Status	PASS	5
Approved BY		

Chord - Web Connections

040-3

Part Id  
Total no. fasteners at each end of the web

Connection type:  
(Apex,knee,heel,elbow,chordpt)

SC-HEEL-A-75-10-6

Truss system:  
ENDUROTRUSS (c)  
C profile

Channel depth:  
Depth of channel -section in mm

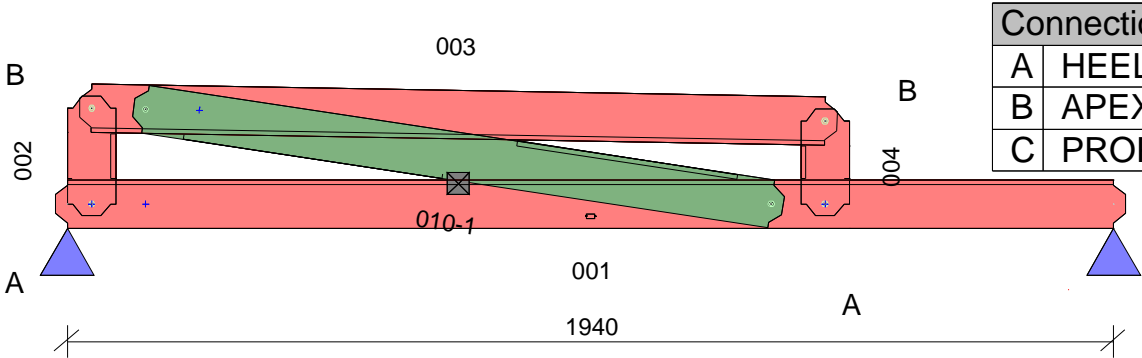
A-75-10-6

Connection variant:  
(A is heel with no stiffener)

Fastener number:  
Total number of fasteners used in the connection including locating truss screw and reinforcing screws

10-6

Channel gauge:  
(75 = 0.75 mm BMT  
10 = 1.0 mm BMT)  
etc



Connection Table			
A	HEEL_HS	SC-HEEL-HS-F-90-75-1	
B	APEX_HS	SC-APEX-HS-F-90-75-1	
C	PROP	SC-PROP-90-75-2	

Chords and webs placed flange-DOWN.  
Min screws per conn: 1 ( Screw locations diagrammatic only. Refer connection sheet for details.)

PARTS LIST (per truss)					ASSEMBLY DETAILS			TRUSS DETAILS		
DESCRIPTION	No.	LEN	MAT	QTY	APEX HEIGHT	LEFT PITCH	RIGHT PITCH	UNCROPPED LENGTH	UNCROPPED HEIGHT	WEIGHT
C9075ra	001	1984	0.75	1	N/A	-	1 deg	1984	268	5.5
C9075ra	002	221.5	0.75	1				DETAILER	DETAILED	SCALE
C9075ra	003	1404.2	0.75	1	VANTAGE_DS	21-10-2019	1:15			
C9075ra	004	197.8	0.75	1				Precamber = 0.0 mm	JOB NUMBER	
C9075ra	010	1217.3	0.75	1	TSF_4412		T004			
TRUSSTITE				6	FABRICATOR:	TRUE STEEL FRAMES		Machine Type		ENDUROTRUSS
					CLIENT REF:	4 REDWOOD ST, ROSTREVOR				
					CUSTOMER :	BERT FARINA CONSTRUCTION				

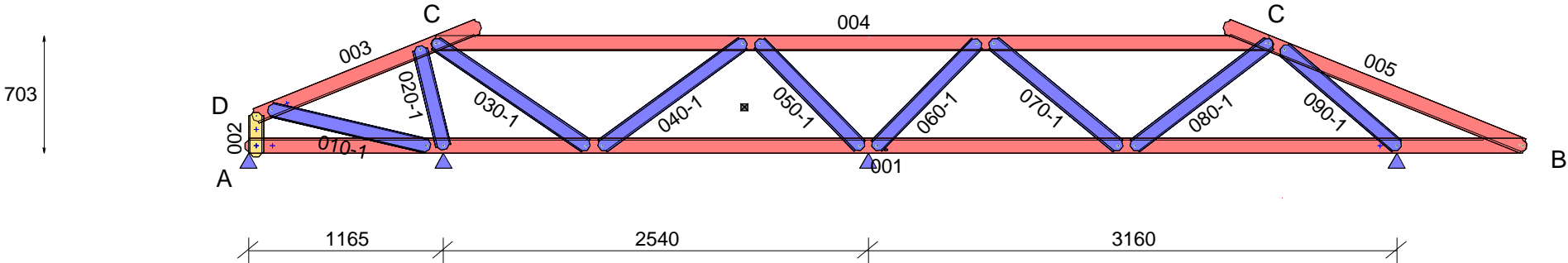
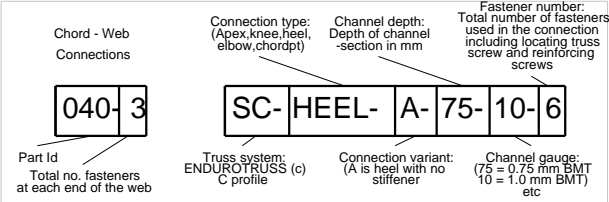
Page 1 of 1

smart: YES flush: NO  
restraint: none

LEFT ← → RIGHT

Connection Table		
A	HEEL_HS	SC-HEEL-HS-90-75-1
B	HEEL	SC-HEEL-A-90-75-2
C	KNEE	SC-KNEE-A-90-75-2
D	APEX_HS	SC-APEX-HS-90-75-1

ANALYSIS		QTY
Status	PASS	1
Approved BY		



QUALITY CHECK: Top of TOP CHORD to Bottom of BOTTOM CHORD: 703  
Chords placed flange-DOWN, Webs placed flange-UP.  
Min screws per conn: 1 ( Screw locations diagrammatic only. Refer connection sheet for details.)

PARTS LIST (per truss)										ASSEMBLY DETAILS			TRUSS DETAILS			
DESCRIPTION	No.	LEN	MAT	QTY	DESCRIPTION	No.	LEN	MAT	QTY	APEX HEIGHT	LEFT PITCH	RIGHT PITCH	UNCROPPED LENGTH	UNCROPPED HEIGHT	WEIGHT	
C9075ra	001	7662.7	0.75	1	C9075ra	070	1008	0.75	1	N/A	22 deg	22 deg	7678	830	27.2	
C9075ra	002	268.3	0.75	1	C9075ra	080	1054	0.75	1				Precamber = 0.0 mm	DETAILER	DETAILED	SCALE
C9075ra	003	1469.7	0.75	1	C9075ra	090	927.8	0.75	1	VANTAGE_DS	21-10-2019	1:40				
C9075ra	004	5027	0.75	1	TRUSSTITE				21	JOB NUMBER	TRUSS					
C9075ra	005	1948.3	0.75	1	SCREW-12-14x20-HEX				3	FABRICATOR:	TRUE STEEL FRAMES			TSF_4412	T100	
C9075ra	010	996.1	0.75	1						CLIENT REF:	4 REDWOOD ST, ROSTREVOR			Machine Type	ENDUROTRUSS	
C9075ra	020	636.1	0.75	1						CUSTOMER :	BERT FARINA CONSTRUCTION					
C9075ra	030	1130.9	0.75	1												
C9075ra	040	1082.9	0.75	1												
C9075ra	050	901.8	0.75	1												
C9075ra	060	901.8	0.75	1												

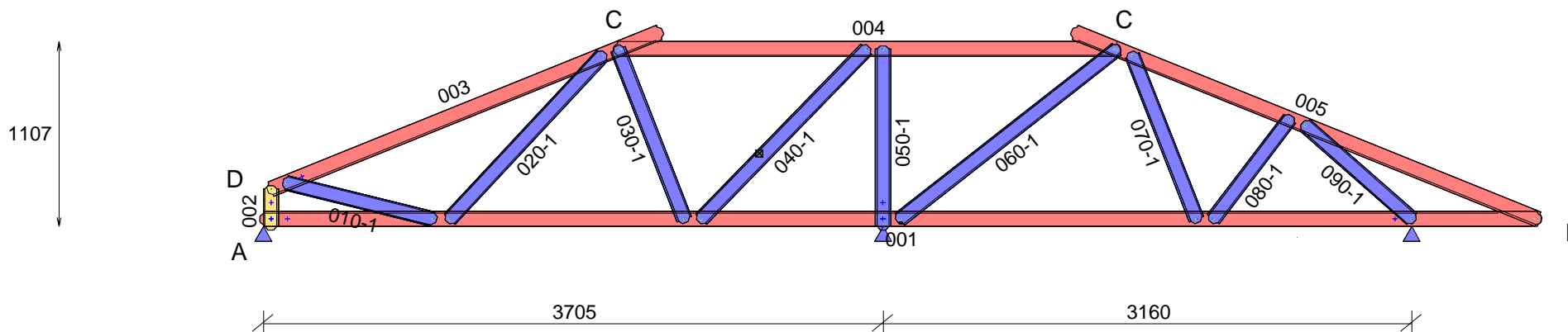
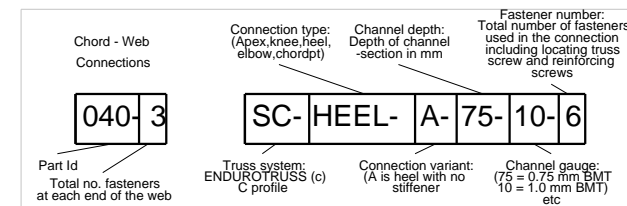
Page 1 of 1

smart: YES    flush: NO  
restraint: none

LEFT  RIGHT

Connection Table		
A	HEEL_HS	SC-HEEL-HS-90-75-1
B	HEEL	SC-HEEL-A-90-75-2
C	KNEE	SC-KNEE-A-90-75-2
D	APEX HS	SC-APEX-HS-90-75-1

ANALYSIS		QTY
Status	PASS	1
Approved BY		



Min screws per conn: 1 (Screw locations diagrammatic only. Refer connection sheet for details.)

PARTS LIST (per truss)										ASSEMBLY DETAILS			TRUSS DETAILS		
DESCRIPTION	No.	LEN	MAT	QTY	DESCRIPTION	No.	LEN	MAT	QTY	APEX HEIGHT	LEFT PITCH	RIGHT PITCH	UNCROPPED LENGTH	UNCROPPED HEIGHT	WEIGHT
C9075ra	001	7662.7	0.75	1	C9075ra	070	1096.5	0.75	1	N/A	22 deg	22 deg	7678	1234	29.4
C9075ra	002	268.3	0.75	1	C9075ra	080	797.4	0.75	1				DETAILER	DETAILED	SCALE
C9075ra	003	2548.4	0.75	1	C9075ra	090	893.2	0.75	1				VANTAGE_DS	21-10-2019	1:40
C9075ra	004	3026.7	0.75	1	TRUSSTITE				21				JOB NUMBER	TRUSS	
C9075ra	005	3027	0.75	1	SCREW-12-14x20-HEX				3	Precamber = 0.0 mm			TSF_4412		T101
C9075ra	010	946.3	0.75	1						FABRICATOR:	TRUE STEEL FRAMES		Machine Type		ENDUROTRUSS
C9075ra	020	1382.7	0.75	1						CLIENT REF:	4 REDWOOD ST, ROSTREVOR		BERT FARINA CONSTRUCTION		
C9075ra	030	1136	0.75	1						CUSTOMER :					
C9075ra	040	1462.5	0.75	1											
C9075ra	050	1106.1	0.75	1											
C9075ra	060	1691.8	0.75	1											

Page 1 of 1



smart: YES flush: NO  
restraint: none

LEFT ← → RIGHT

Connection Table		
A	HEEL_HS	SC-HEEL-HS-90-75-1
B	HEEL	SC-HEEL-A-90-75-2
C	KNEE	SC-KNEE-A-90-75-2
D	APEX_HS	SC-APEX-HS-90-75-1

ANALYSIS		QTY
Status	PASS	1
Approved BY		

Chord - Web Connections

040-3

Part Id  
Total no. fasteners at each end of the web

Connection type: (Apex,knee,heel,elbow,chordpt)

SC-HEEL-A-75-10-6

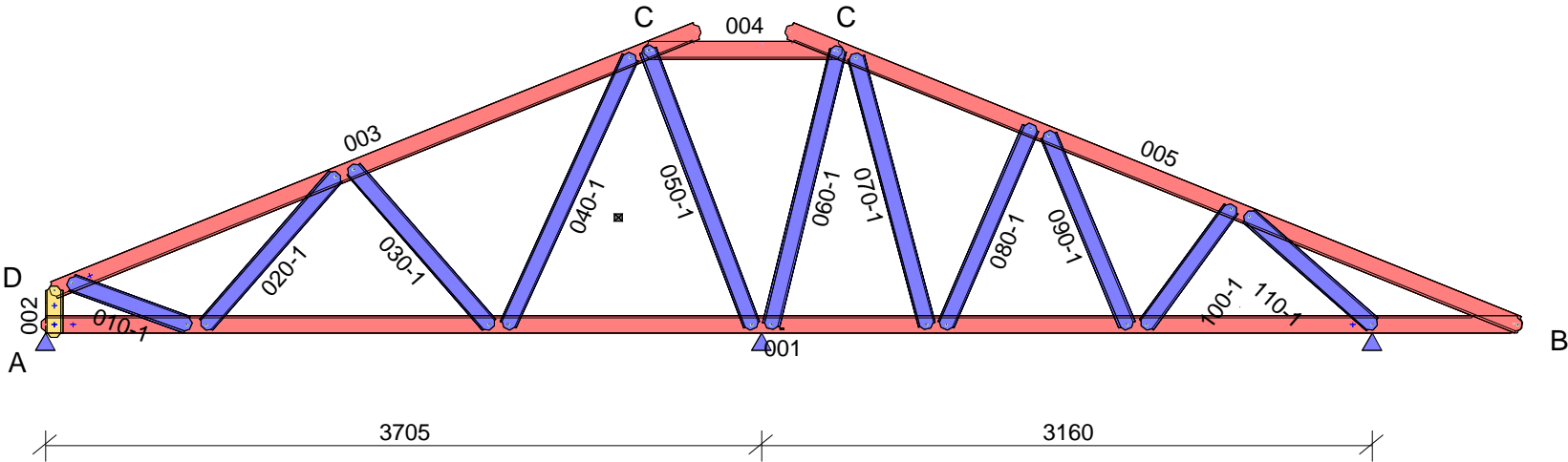
Truss system: ENDUROTRUSS (c)  
C profile

Channel depth: Depth of channel -section in mm

Channel gauge: (75 = 0.75 mm BMT  
10 = 1.0 mm BMT)  
etc

Connection variant: (A is heel with no stiffener)

Fastener number: Total number of fasteners used in the connection including locating truss screw and reinforcing screws



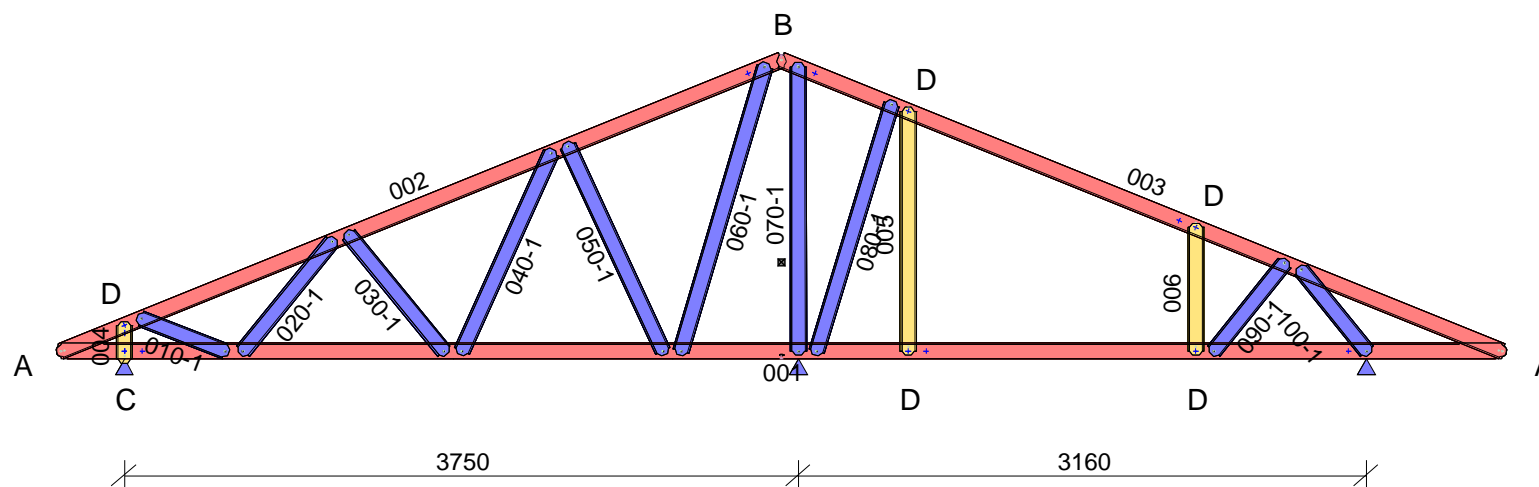
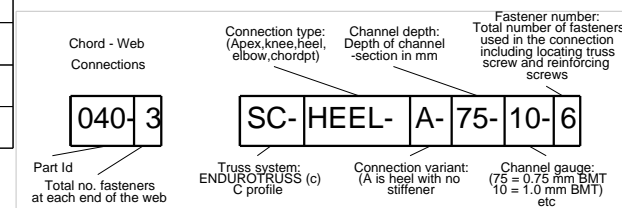
QUALITY CHECK: Top of TOP CHORD to Bottom of BOTTOM CHORD: 1511  
Chords placed flange-DOWN, Webs placed flange-UP.  
Min screws per conn: 1 ( Screw locations diagrammatic only. Refer connection sheet for details.)

PARTS LIST (per truss)										ASSEMBLY DETAILS			TRUSS DETAILS		
DESCRIPTION	No.	LEN	MAT	QTY	DESCRIPTION	No.	LEN	MAT	QTY	APEX HEIGHT	LEFT PITCH	RIGHT PITCH	UNCROPPED LENGTH	UNCROPPED HEIGHT	WEIGHT
C9075ra	001	7662.7	0.75	1	C9075ra	060	1506.7	0.75	1	N/A	22 deg	22 deg	7678	1638	32.1
C9075ra	002	268.3	0.75	1	C9075ra	070	1475.3	0.75	1				Precamber = 0.0 mm	DETAILER	DETAILED
C9075ra	003	3626.7	0.75	1	C9075ra	080	1152.4	0.75	1	VANTAGE_DS	21-10-2019	1:40			
C9075ra	004	1027	0.75	1	C9075ra	090	1104.7	0.75	1	JOB NUMBER		TRUSS			
C9075ra	005	4105.3	0.75	1	C9075ra	100	786.6	0.75	1	TSF_4412		T102			
C9075ra	010	676.4	0.75	1	TRUSSTITE				25	FABRICATOR:	TRUE STEEL FRAMES				
C9075ra	110	893.2	0.75	1	SCREW-12-14x20-HEX				3	CLIENT REF:	4 REDWOOD ST, ROSTREVOR		Machine Type	ENDUROTRUSS	
C9075ra	020	1061.7	0.75	1						CUSTOMER :	BERT FARINA CONSTRUCTION				
C9075ra	030	1112.1	0.75	1											
C9075ra	040	1564.4	0.75	1											
C9075ra	050	1562.9	0.75	1											

LEFT  RIGHT

Connection Table		
A	HEEL	SC-HEEL-A-90-75-2
B	APEX	SC-APEX-A-90-75-1
C	CHORDPT	SC-CHORDPT-S-90-55-2
D	CHORDPT	SC-CHORDPT-B-90-75-2

ANALYSIS		QTY
Status	PASS	2
Approved BY		



Min screws per conn: 1 (Screw locations diagrammatic only. Refer connection sheet for details.)

[illegible]