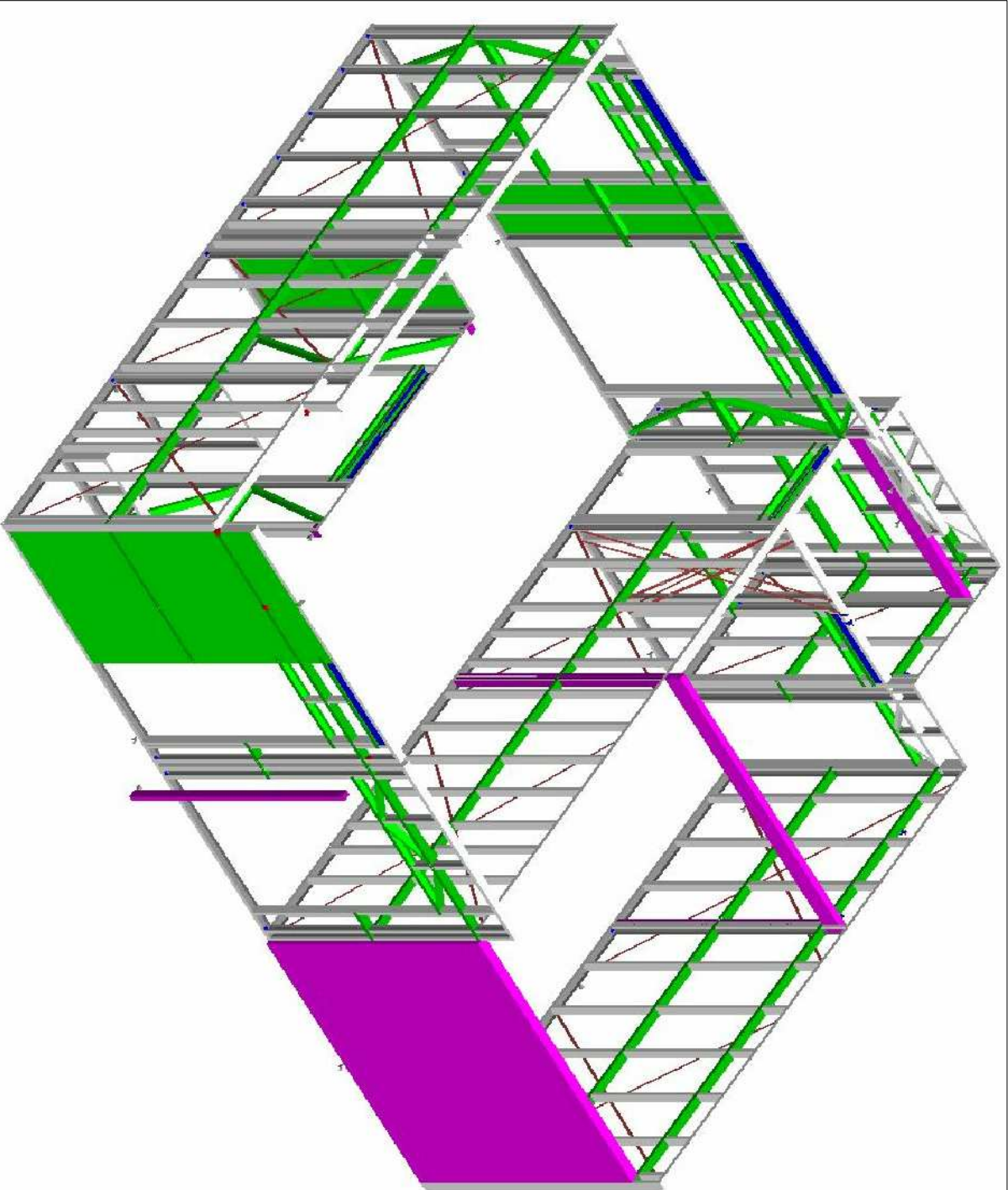
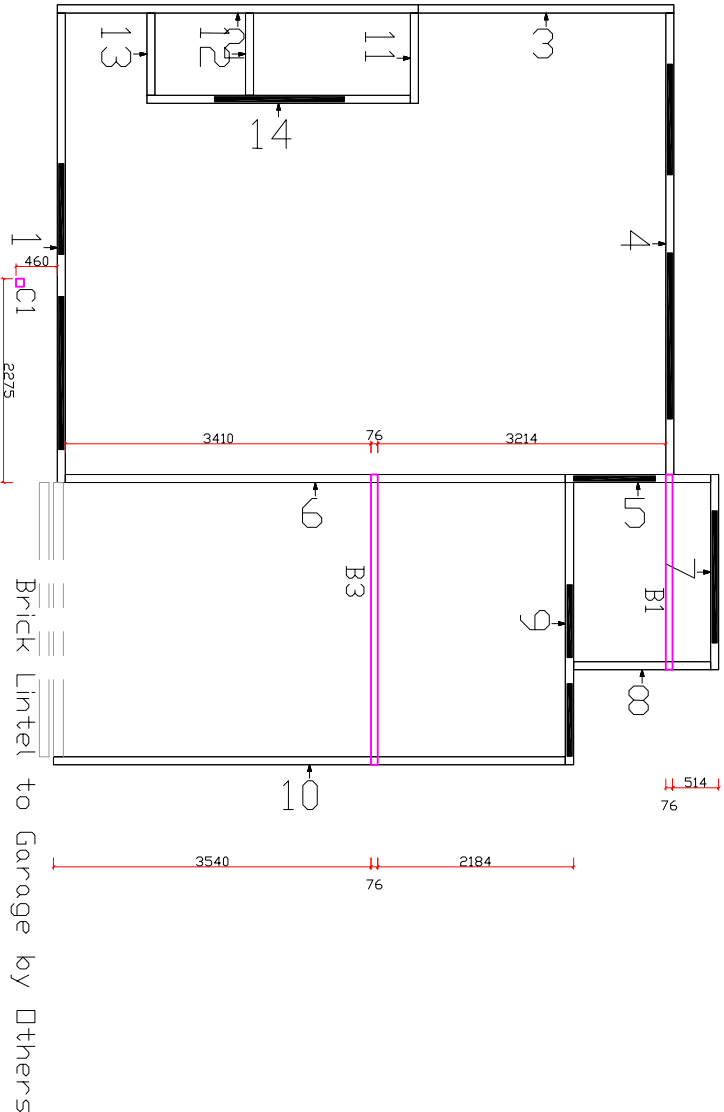



STRUCTURAL STEEL TO BE SUPPLIED BY BUILDER:

C1: 89x89x2.0 SHS (REFER TO ENGINEERS SPECIFICATION),
B1: Boxed 200C19 PURLIN (REFER TO ENGINEERS SPECIFICATION),
B3: Boxed 200C24 PURLIN (REFER TO ENGINEERS SPECIFICATION).

ADDITIONAL NOTES:

- ARROWS SHOW THE DIRECTION THE WALLS ARE VIEWED FROM,
- CHALK OUT SLAB USING ARCHITECTURAL DRAWINGS NOT TSF LAYOUTS



NO.	DATE:	BY:	REVISION:	<div><p>TRUE STEEL FRAMES <i>Steel, the true way to build!</i></p></div> <div>31 HEWITTS RD, EDINBURGH NORTH S113 SITE ENQUIRIES - Ph: (08) 8252 0046</div>
1				
2				
3				
4				

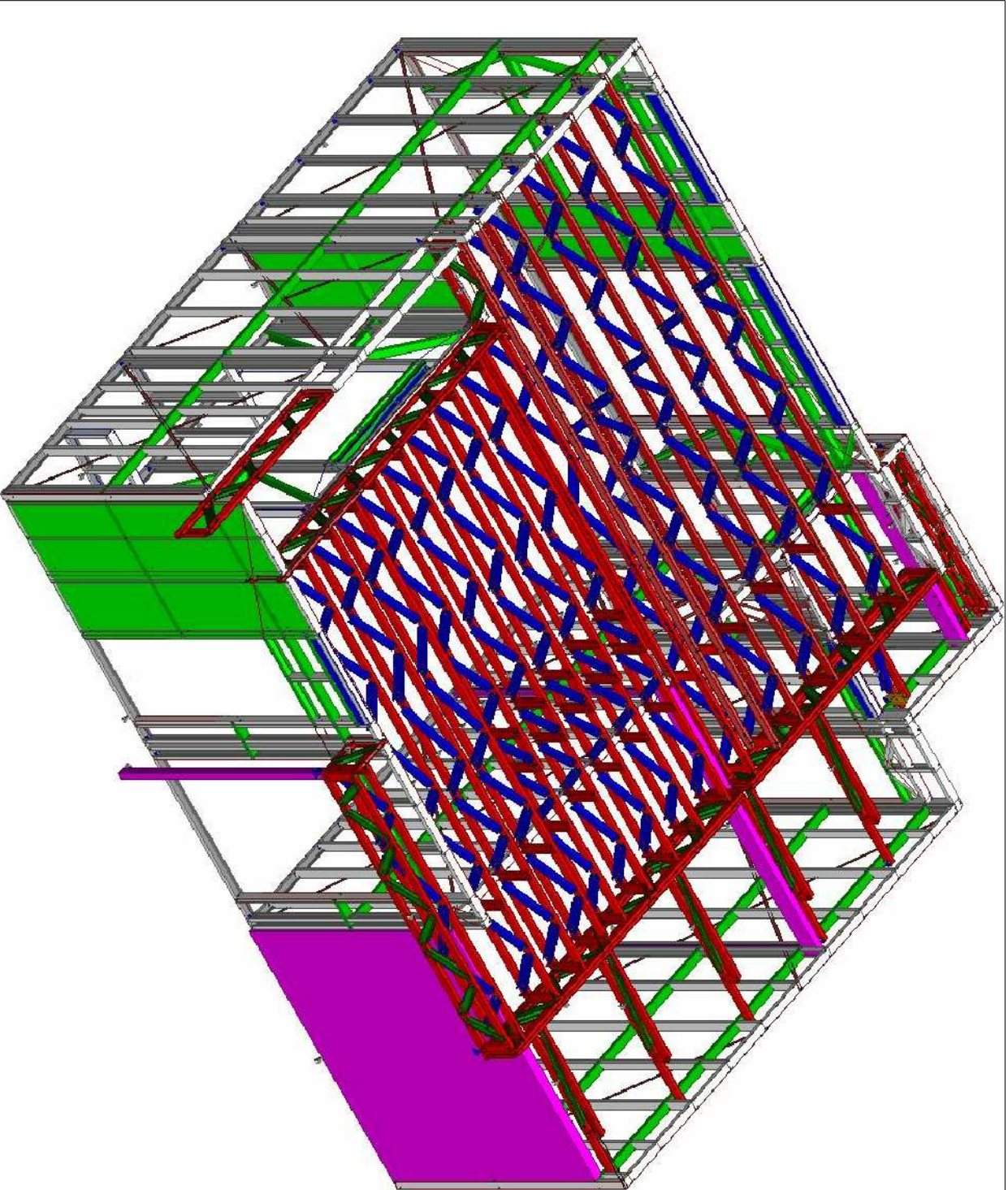
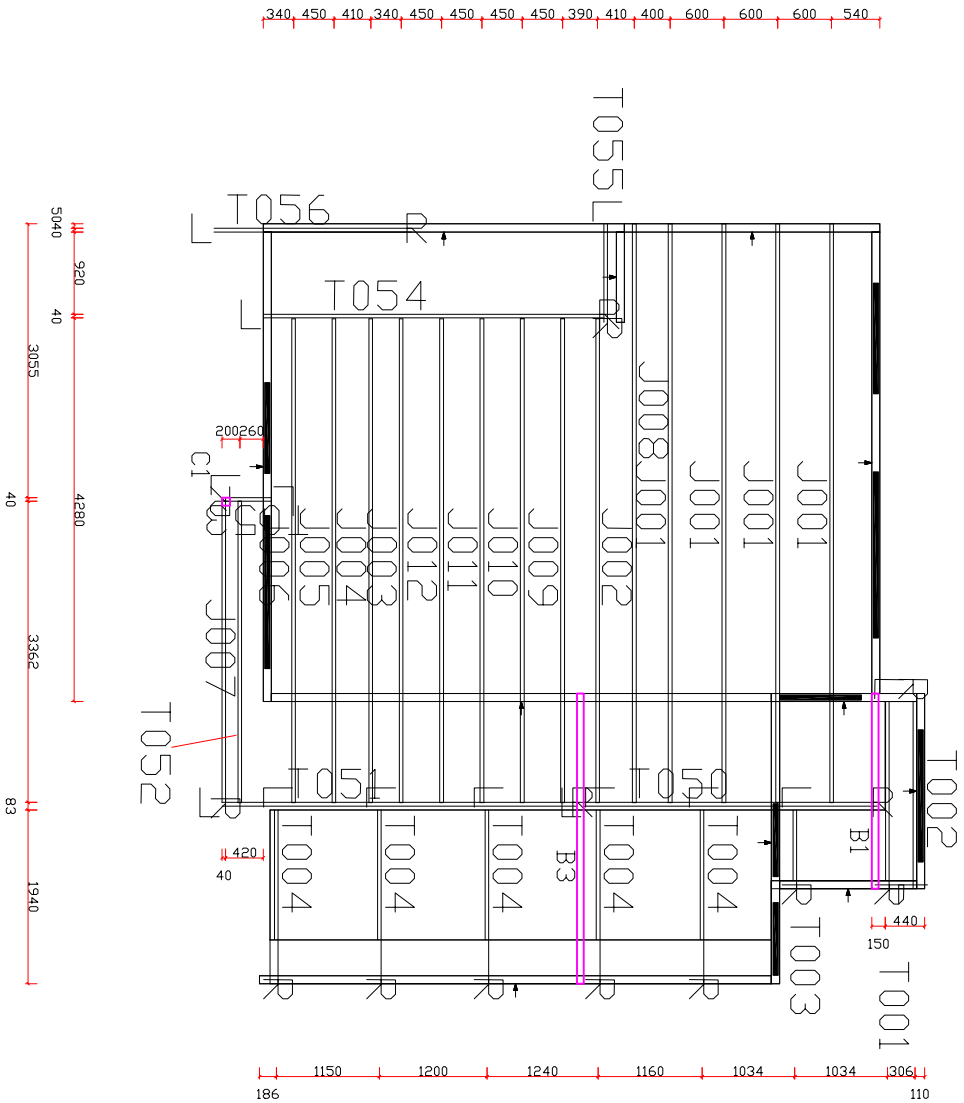
WALL FRAME LAYOUT GROUND FLOOR PLAN		
D/W3 #4 Redwood St, Rostrevor TSF_4412 - BERT FARINA CONSTRUCTIONS		
WINDSPEED:	N1	DETAILED BY: VANTAGE
WALL THICKNESS:	90mmmm	
L.B.W HEIGHT:	2745mm	
N.L.B.W HEIGHT:	2710mm	
EXTERNAL CLADDING: Refer Elevations		CHECKED: Rebecca


STRUCTURAL STEEL TO BE SUPPLIED BY BUILDER:

C1: 89x89x2.0 SHS (REFER TO ENGINEERS SPECIFICATION),
B1: Boxed 200C19 PURLIN (REFER TO ENGINEERS SPECIFICATION),
B3: Boxed 200C24 PURLIN (REFER TO ENGINEERS SPECIFICATION).

ADDITIONAL NOTES:

-ARROWS SHOW THE DIRECTION THE WALLS ARE VIEWED FROM,
-CHALK OUT SLAB USING ARCHITECTURAL DRAWINGS NOT TSF LAYOUTS



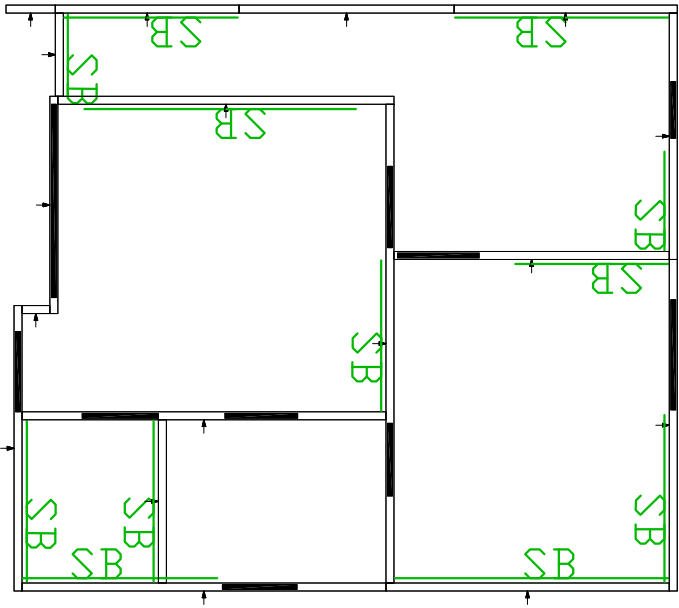
NO.	DATE:	BY:	REVISION:	<div><p>Steel, the true way to build!</p><p>31 HEWITTS RD, EDINBURGH NORTH S113 SITE ENQUIRIES - Ph: (08) 8252 0046</p></div>		
1						
2						
3						
4						
FLOOR JOIST & TRUSS LAYOUT				WINDSPEED:	N1	DETAILED BY:
GROUND FLOOR PLAN				ROOF TYPE:	HIP + VALLEY	VANTAGE
DW/3 #4 Redwood St, Rostrevor				ROOF PITCH:	25 deg	CHECKED:
TSF_4412 - BERT FARINA CONSTRUCTIONS				SECTION TYPE:	90 C	Rebecca
				ROOF FEATURES:		


SHEET LEGEND:

- SB = 1.0x30x550 STRAP BRACE ON FRAME FACE
- KB = 0.75 GAUGE K-BRACE WITHIN FRAME
- HB = 5mm HARDIBRACE FOR SHEET BRACING

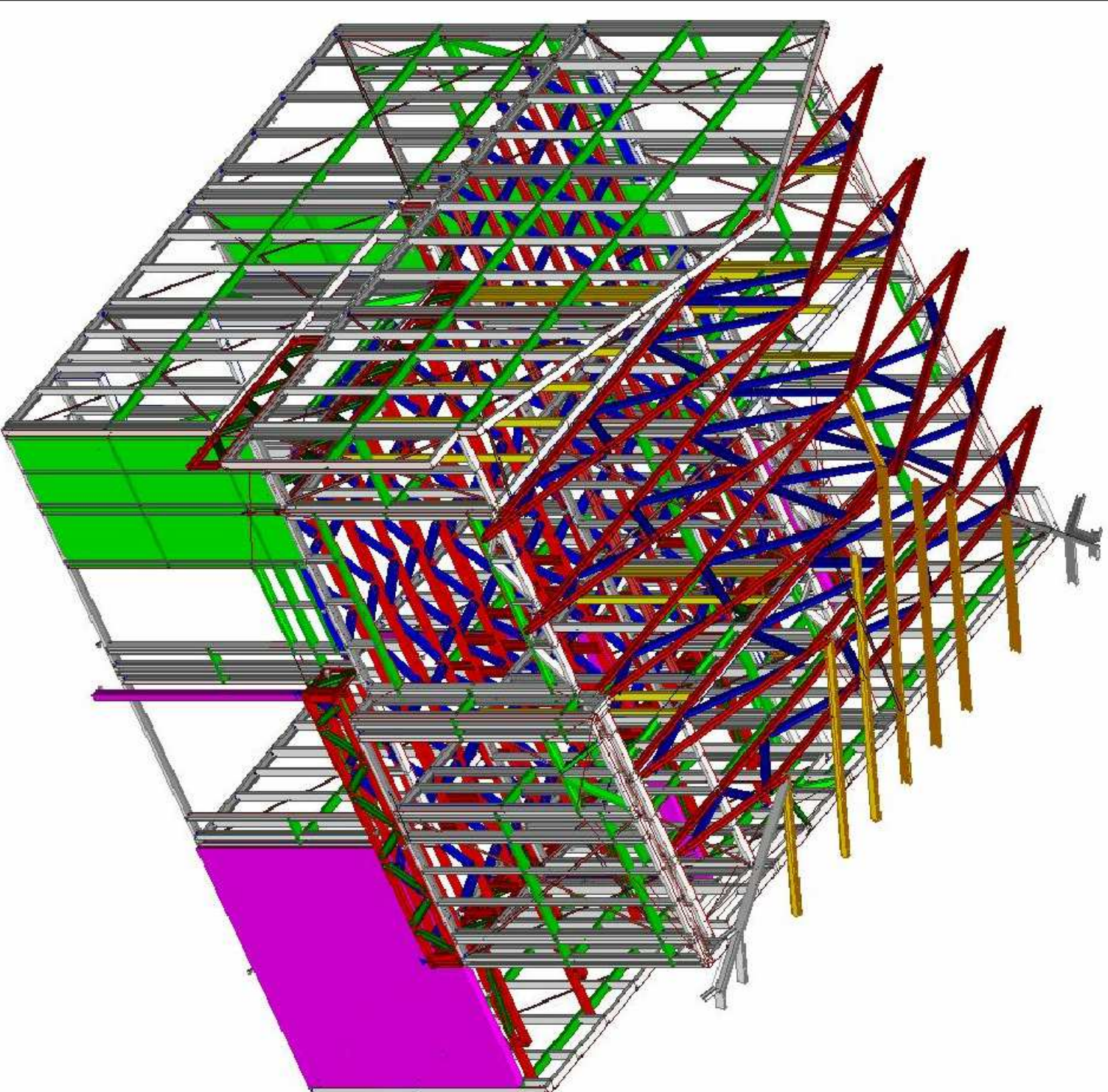
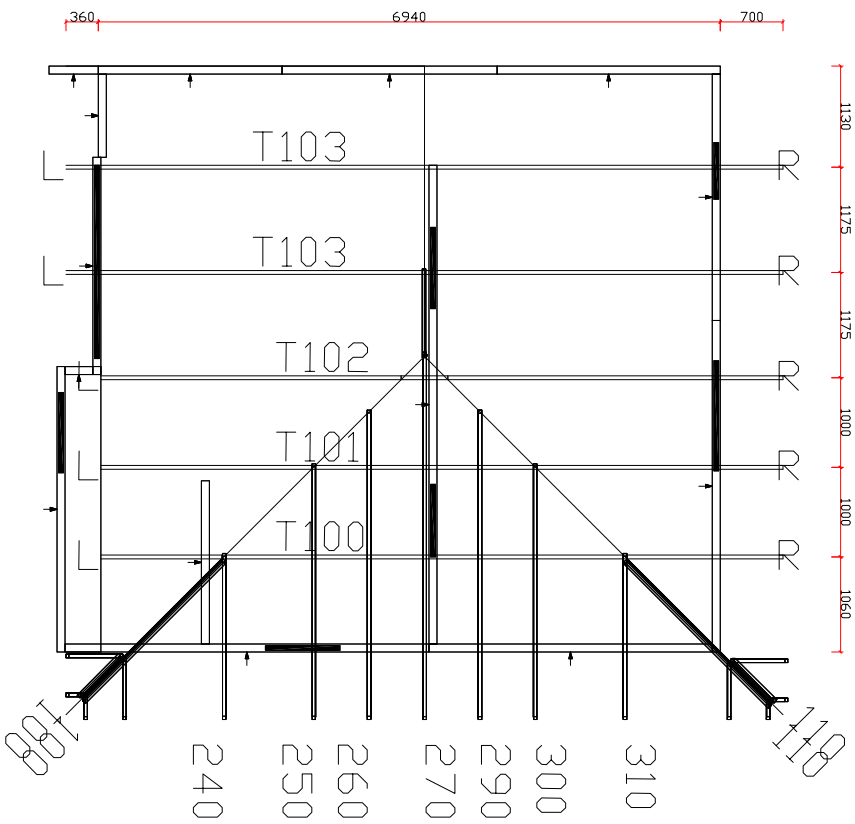
ADDITIONAL NOTES:


-ARROWS SHOW THE DIRECTION THE WALLS ARE VIEWED FROM.
-STRAP BRACING IS TO BE INSTALLED ON THE SIDE OF A FRAME HIGHLIGHTED



NO.	DATE:	BY:	REVISION:	<div><div><div>TRUE STEEL FRAMES <i>Steel, the true way to build!</i></div></div><div>31 HEWITTS RD, EDINBURGH NORTH S113 SITE ENQUIRIES - Ph: (08) 8252 0046</div></div>			
1							
2							
3							
4							
<div>WALL BRACING LAYOUT</div> <div>FIRST FLOOR PLAN</div>				WINDSPEED: N1			DETAILED BY: VANTAGE
				WALL THICKNESS: 90mm			
<div>DW/3 #4 Redwood St, Rostrevor</div> <div>TSF_4412 - BERT FARINA CONSTRUCTIONS</div>				L.B.W HEIGHT: 2745mm			CHECKED: Rebecca
				N.L.B.W HEIGHT: 2710mm			
				EXTERNAL CLADDING: Refer Elevations			

SHEET LEGEND:
L - R DENOTES THE ORIENTATION OF THE TRUSS



NO.	DATE:	BY:	REVISION:	<div><p>Steel, the true way to build!</p><p>TRUE STEEL FRAMES</p><p>31 HEWITTS RD, EDINBURGH NORTH S113 SITE ENQUIRIES - Ph: (08) 8252 0046</p></div>	<div><div>TRUSS LAYOUT</div><div>FIRST FLOOR PLAN</div><div>D/W3 #4 Redwood St, Rostrevor</div><div>TSF_4412 - BERT FARINA CONSTRUCTIONS</div></div> <div><div>WINDSPEED:</div><div>ROOF TYPE:</div><div>ROOF PITCH:</div><div>SECTION TYPE:</div><div>ROOF FEATURES:</div></div> <div><div>N1</div><div>HIP + VALLEY</div><div>25 deg</div><div>90 C</div><div></div></div> <div><div>DETAILED BY:</div><div>VANTAGE</div><div>CHECKED:</div><div>Rebecca</div></div>		
1							
2							
3							
4							