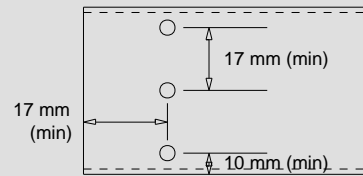
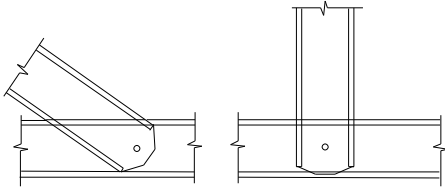


Truss connections used in job: TSF_4413 (Sheet 1 of 3)

Minimum screw-spacing = 17 mm
 Minimum distance from end of part = 17 mm
 Minimum distance from edge of part = 10 mm

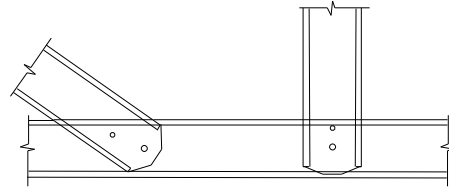


SC-WEB-CHORD-1



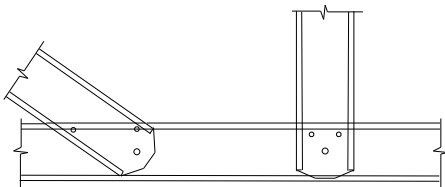
1x TRUSSTITE

SC-WEB-CHORD-2



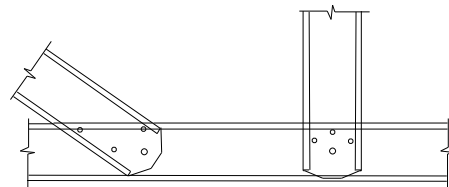
1x TRUSSTITE + 1 x 12-14 x 20 HEX SCREW
 (16MM MIN EDGE DISTANCE)

SC-WEB-CHORD-3



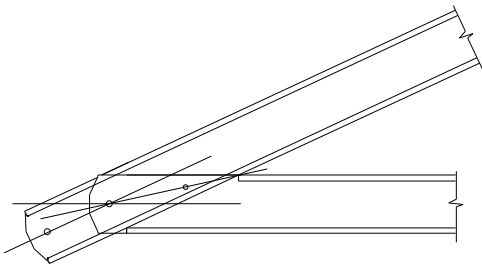
1x TRUSSTITE + 2 x 12-14 x 20 HEX SCREW
 (16MM MIN EDGE DISTANCE)

SC-WEB-CHORD-4



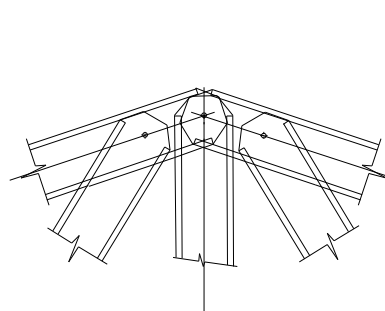
1x TRUSSTITE + 3 x 12-14 x 20 HEX SCREW
 (16MM MIN EDGE DISTANCE)

SC-HEEL-A-90-75-2

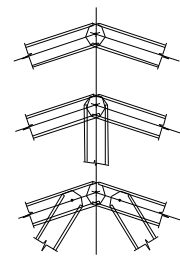


TRUSSTITE + 1X12-14X20 HEX SCREW

SC-APEX-A-90-75-1

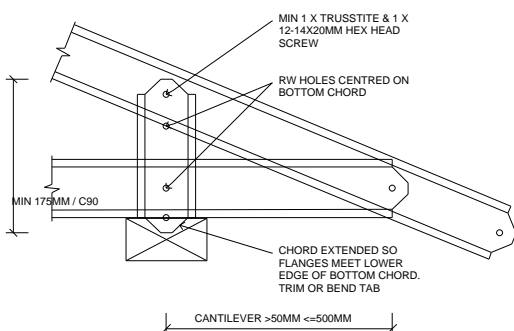


1 x TRUSSTITE

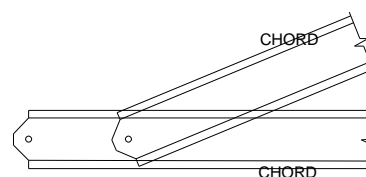


Other Web
 Configurations

SC-CHORDPT-S-90-55-2



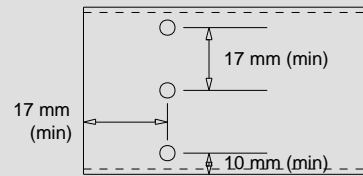
SC-CHORDPT-B-90-75-2



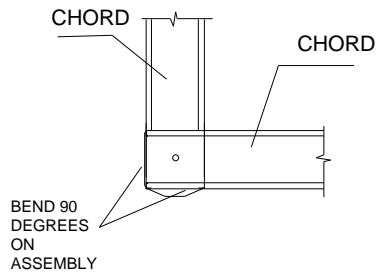
TRUSSTITE + 1 X 12-14X20 HEX SCREW

Truss connections used in job: TSF_4413 (Sheet 2 of 3)

Minimum screw-spacing = 17 mm
 Minimum distance from end of part = 17 mm
 Minimum distance from edge of part = 10 mm

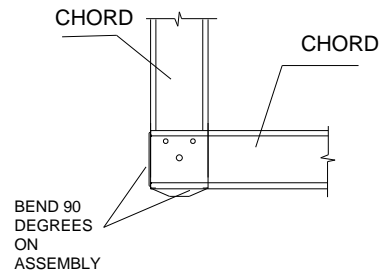


SC-HEEL-HS-F-90-75-1



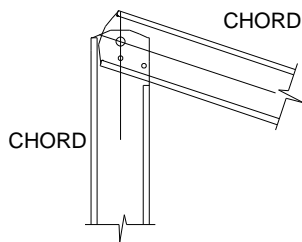
1 x TRUSSTITE

SC-HEEL-HS-F-90-75-3



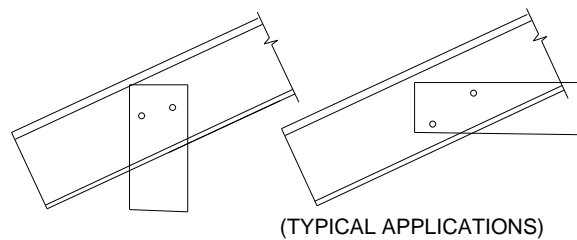
1x TRUSSTITE + 2 x 12-14 x 20 HEX SCREW

SC APEX-HS-F-90-75-3



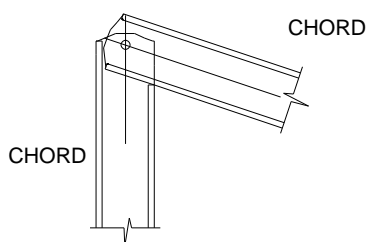
TRUSSTITE + 2X12-14X20 HEX SCREWS

SC-PROP-90-75-2
(CHORD SUPPORT - SHEAR CON.)



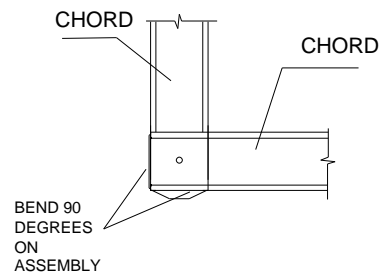
2X12-14X20 HEX SCREW CHORD TO BRACKET

SC-APEX-HS-F-90-75-1



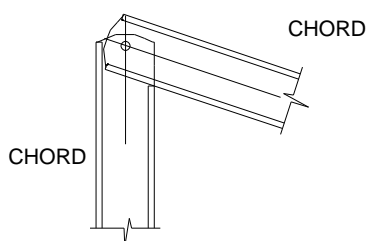
1 x TRUSSTITE

SC-HEEL-HS-F-90-10-1



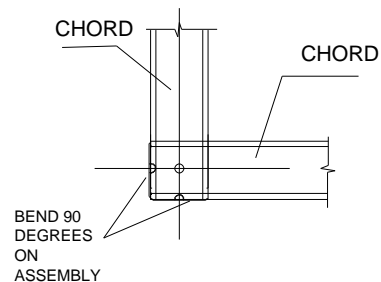
1 x TRUSSTITE

SC-APEX-HS-F-90-10-1



1 x TRUSSTITE

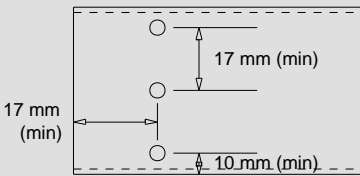
SC-HEEL-HS-90-75-1



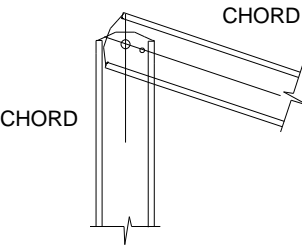
1 x TRUSSTITE

Truss connections used in job: TSF_4413 (Sheet 3 of 3)

Minimum screw-spacing = 17 mm
Minimum distance from end of part = 17 mm
Minimum distance from edge of part = 10 mm

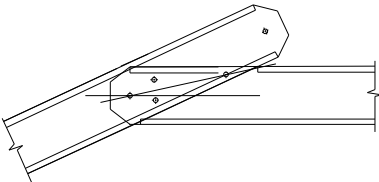


SC-APEX-HS-90-75-2

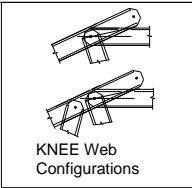


TRUSSTITE + 1X12-14X20 HEX SCREWS

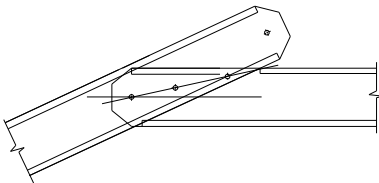
SC-KNEE-A-90-75-4



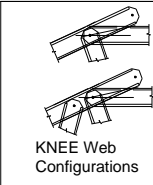
TRUSSTITE + 3X12-14X20 HEX SCREWS



SC-KNEE-A-90-75-3

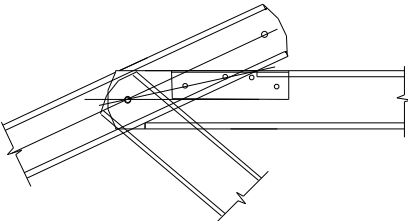


TRUSSTITE + 2X12-14X20 HEX SCREWS



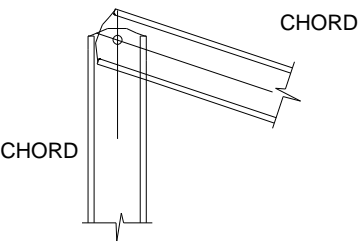
SC-KNEE-C-90-75-5

(35 x 35 x 1.0mm ANGLE
STIFFENER 200MM LONG)



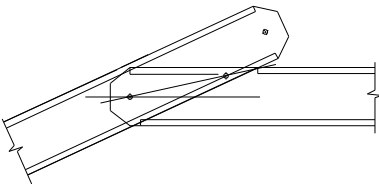
TRUSSTITE + 4X12-14X20 HEX SCREWS

SC-APEX-HS-90-75-1

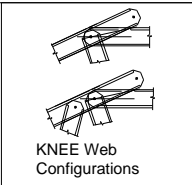


1 x TRUSSTITE

SC-KNEE-A-90-75-2



TRUSSTITE + 1X12-14X20 HEX SCREW



smart: YES flush: YES
restraint: none

LEFT ← → RIGHT

Connection Table		
A	HEEL_HS	SC-HEEL-HS-F-90-75-1
B	HEEL_HS	SC-HEEL-HS-F-90-75-3
C	APEX_HS	SC-APEX-HS-F-90-75-3
D	PROP	SC-PROP-90-75-2

ANALYSIS		QTY
Status	PASS	1
Approved BY		

Chord - Web Connections

040-3

Part Id
Total no. fasteners at each end of the web

Connection type: (Apex,knee,heel,elbow,chordpt)

SC-HEEL-A-75-10-6

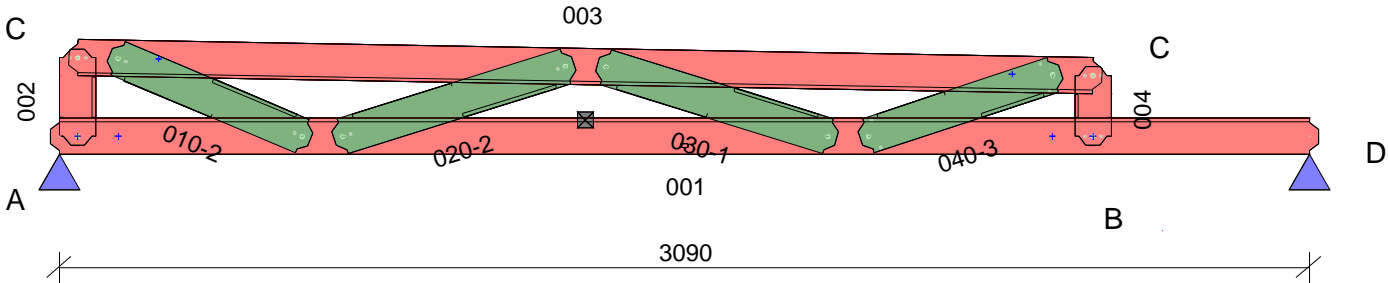
Truss system: ENDUROTRUSS (c)
C profile

Channel depth: Depth of channel -section in mm

Connection variant: (A is heel with no stiffener)

Fastener number: Total number of fasteners used in the connection including locating truss screw and reinforcing screws

Channel gauge: (75 = 0.75 mm BMT 10 = 1.0 mm BMT) etc



Chords and webs placed flange-DOWN.
Min screws per conn: 1 (Screw locations diagrammatic only. Refer connection sheet for details.)

PARTS LIST (per truss)					ASSEMBLY DETAILS			TRUSS DETAILS		
DESCRIPTION	No.	LEN	MAT	QTY	APEX HEIGHT	LEFT PITCH	RIGHT PITCH	UNCROPPED LENGTH	UNCROPPED HEIGHT	WEIGHT
C9075ra	001	3134	0.75	1	N/A	-	1 deg	3134	285	9.2
C9075ra	002	238.6	0.75	1				DETAILER	DETAILED	SCALE
C9075ra	003	2554.4	0.75	1	Precamber = 2.0 mm					
C9075ra	004	194	0.75	1	FABRICATOR:	TRUE STEEL FRAMES		VANTAGE_DS	21-10-2019	1:20
C9075ra	010	537.8	0.75	1				JOB NUMBER		
C9075ra	020	621.2	0.75	1	CLIENT REF:	4 REDWOOD ST, ROSTREVOR		TSF_4413		T001
C9075ra	030	619	0.75	1						
C9075ra	040	523.4	0.75	1	CUSTOMER :	BERT FARINA CONSTRUCTION		Page 1 of 1		
TRUSSTITE				12						
SCREW-12-14x20-HEX				14						

Loading: USER-W34N(m,6,-0.2,-0.13,-0.25,0,0,0,0,0,0,-1.1,-1.1,0,1200,0,0,0,0,0,600,0,0,A,1,1,1,1,1,,N1,,,,,5000,S,8000,,SEALED,)

smart: YES flush: YES
restraint: none

LEFT ← → RIGHT

Connection Table		
A	HEEL_HS	SC-HEEL-HS-F-90-75-1
B	APEX_HS	SC-APEX-HS-F-90-75-1
C	PROP	SC-PROP-90-75-2

ANALYSIS		QTY
Status	PASS	1
Approved BY		

Chord - Web Connections

040-3

Part Id
Total no. fasteners at each end of the web

Connection type: (Apex,knee,heel,elbow,chordpt)

Channel depth: Depth of channel -section in mm

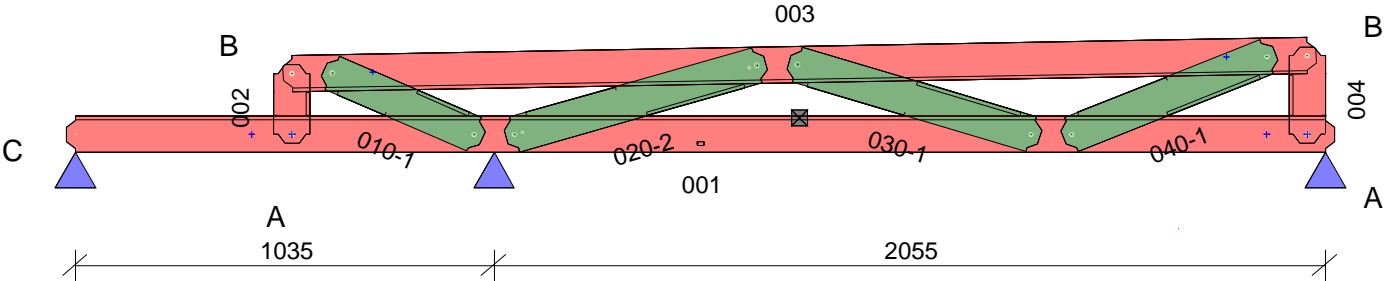
Fastener number: Total number of fasteners used in the connection including locating truss screw and reinforcing screws

SC-HEEL-A-75-10-6

Truss system: ENDUROTRUSS (c)
C profile

Connection variant: (A is heel with no stiffener)

Channel gauge: (75 = 0.75 mm BMT
10 = 1.0 mm BMT)
etc



Chords and webs placed flange-DOWN.
Min screws per conn: 1 (Screw locations diagrammatic only. Refer connection sheet for details.)

PARTS LIST (per truss)					ASSEMBLY DETAILS			TRUSS DETAILS			
DESCRIPTION	No.	LEN	MAT	QTY	APEX HEIGHT	LEFT PITCH	RIGHT PITCH	UNCROPPED LENGTH	UNCROPPED HEIGHT	WEIGHT	
C9075ra	001	3134	0.75	1	N/A	1 deg	-	3134	285	9.2	
C9075ra	002	194.8	0.75	1							
C9075ra	003	2554.4	0.75	1	Precamber = 0.0 mm			DETAILER	DETAILED	SCALE	
C9075ra	004	238.6	0.75	1				VANTAGE_DS	21-10-2019	1:20	
C9075ra	010	426	0.75	1				JOB NUMBER		TRUSS	
C9075ra	020	667.1	0.75	1				TSF_4413		T002	
C9075ra	030	647.4	0.75	1	FABRICATOR:	TRUE STEEL FRAMES					
C9075ra	040	563.5	0.75	1	CLIENT REF:	4 REDWOOD ST, ROSTREVOR		Machine Type		ENDUROTRUSS	
TRUSSTITE				12	CUSTOMER :	BERT FARINA CONSTRUCTION					
SCREW-12-14x20-HEX				2				Page 1 of 1			

10.00.21 TRUSS-T002-21-10-2019-4:38:43 TrussBuilder Vers 1.2-20 G3-22

smart: YES flush: YES
restraint: none

LEFT ← → RIGHT

Connection Table		
A	HEEL_HS	SC-HEEL-HS-F-90-75-1
B	APEX_HS	SC-APEX-HS-F-90-75-1
C	PROP	SC-PROP-90-75-2

ANALYSIS		QTY
Status	PASS	1
Approved BY		

Chord - Web Connections

040-3

Part Id
Total no. fasteners at each end of the web

Connection type: (Apex,knee,heel,elbow,chordpt)

SC-HEEL-A-75-10-6

Truss system: ENDUROTRUSS (c)
C profile

Channel depth: Depth of channel -section in mm

75

Connection variant: (A is heel with no stiffener)

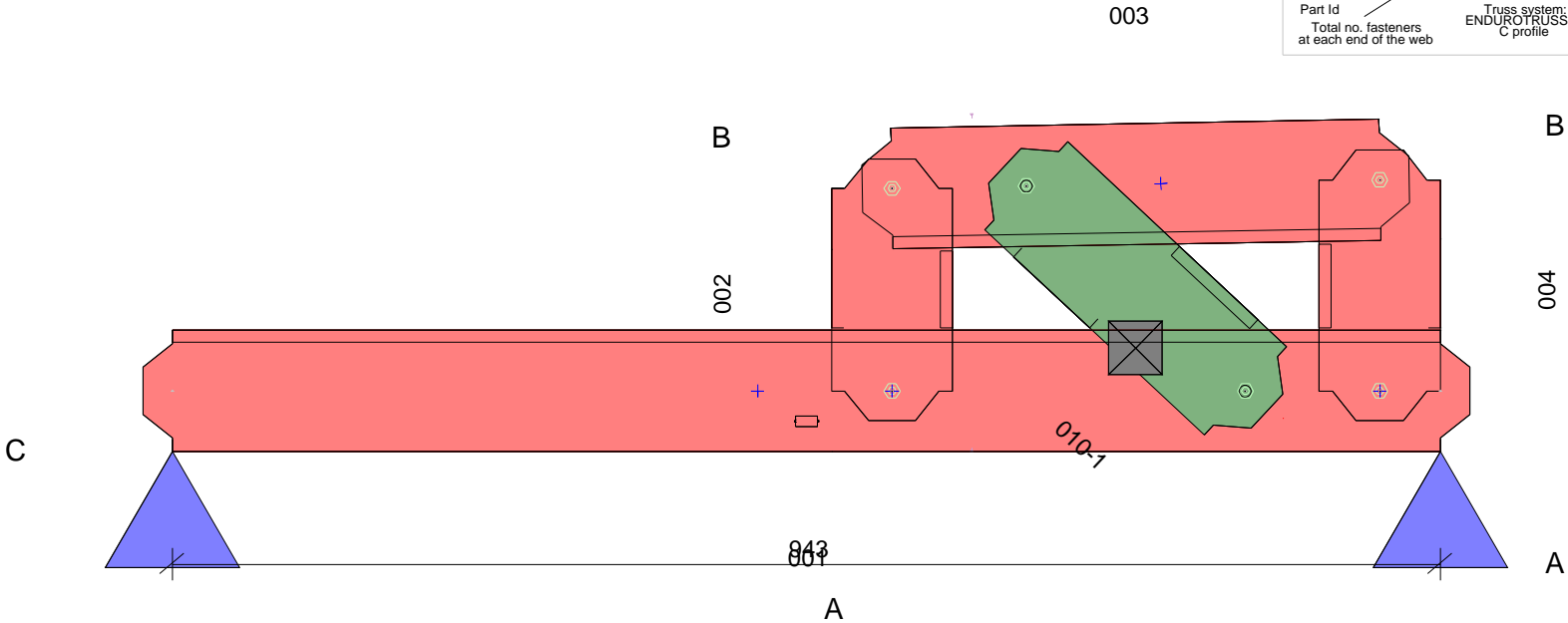
A

Fastener number: Total number of fasteners used in the connection including locating truss screw and reinforcing screws

10-6

Channel gauge: (75 = 0.75 mm BMT
10 = 1.0 mm BMT) etc

10



QUALITY CHECK: Top of TOP CHORD to Bottom of BOTTOM CHORD: 251

Chords and webs placed flange-DOWN.

Min screws per conn: 1 (Screw locations diagrammatic only. Refer connection sheet for details.)

PARTS LIST (per truss)					ASSEMBLY DETAILS			TRUSS DETAILS			
DESCRIPTION	No.	LEN	MAT	QTY	APEX HEIGHT	LEFT PITCH	RIGHT PITCH	UNCROPPED LENGTH	UNCROPPED HEIGHT	WEIGHT	
C9075ra	001	986.8	0.75	1	N/A	1 deg	-	987	247	2.3	
C9075ra	002	194.8	0.75	1							
C9075ra	003	406.9	0.75	1	Precamber = 0.0 mm			DETAILER	DETAILED	SCALE	
C9075ra	004	201.1	0.75	1				VANTAGE_DS	21-10-2019	1:6	
C9075ra	010	267.1	0.75	1				JOB NUMBER		TRUSS	
TRUSSTITE				6				FABRICATOR:		TRUE STEEL FRAMES	
					CLIENT REF:		4 REDWOOD ST, ROSTREVOR		Machine Type		
					CUSTOMER :		BERT FARINA CONSTRUCTION		ENDUROTRUSS		
					Page 1 of 1						

smart: YES flush: YES
restraint: none

LEFT ← → RIGHT

Connection Table		
A	HEEL_HS	SC-HEEL-HS-F-90-75-1
B	APEX_HS	SC-APEX-HS-F-90-75-1
C	PROP	SC-PROP-90-75-2

ANALYSIS		QTY
Status	PASS	1
Approved BY		

Chord - Web Connections

040-3

Part Id
Total no. fasteners at each end of the web

Connection type:
(Apex,knee,heel,elbow,chordpt)

SC-HEEL-A-75-10-6

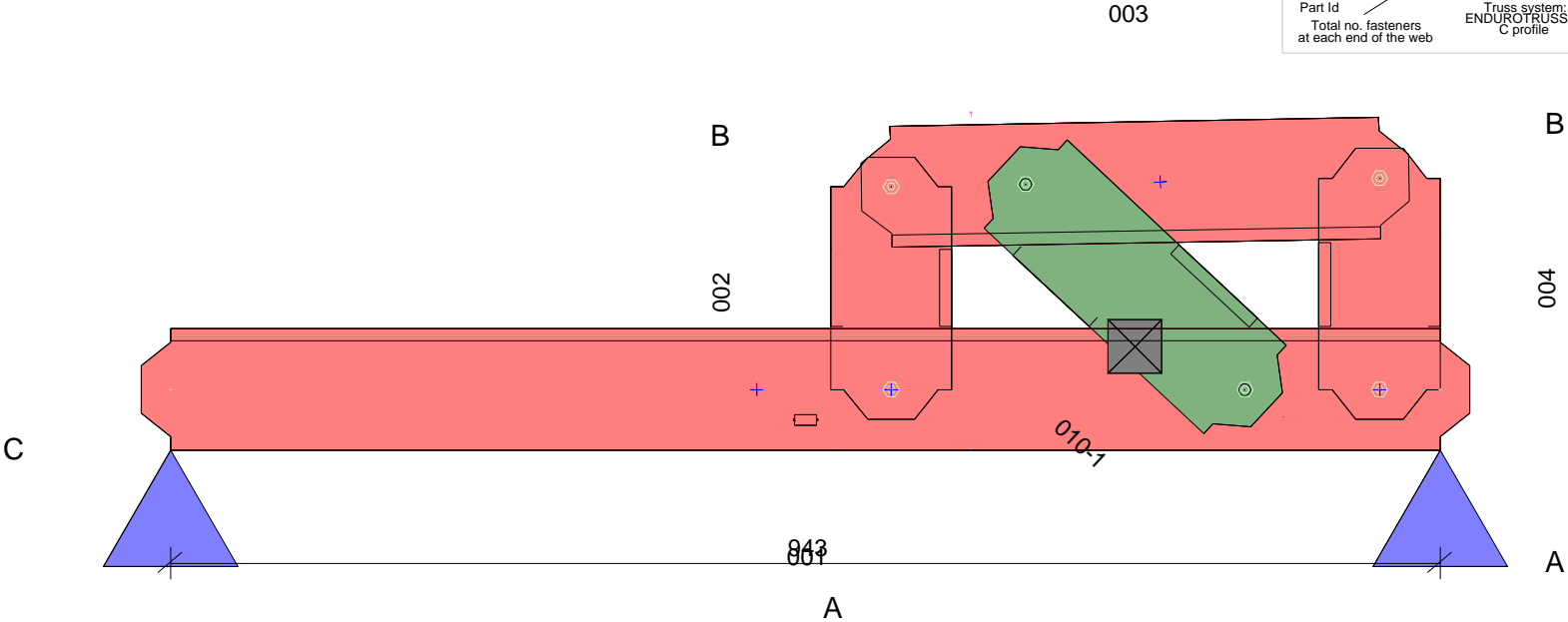
Truss system:
ENDUROTRUSS (c)
C profile

Channel depth:
Depth of channel -section in mm

Channel gauge:
(75 = 0.75 mm BMT
10 = 1.0 mm BMT)
etc

Connection variant:
(A is heel with no stiffener)

Fastener number:
Total number of fasteners used in the connection including locating truss screw and reinforcing screws



QUALITY CHECK: Top of TOP CHORD to Bottom of BOTTOM CHORD: 251

Chords and webs placed flange-DOWN.

Min screws per conn: 1 (Screw locations diagrammatic only. Refer connection sheet for details.)

PARTS LIST (per truss)					ASSEMBLY DETAILS			TRUSS DETAILS		
DESCRIPTION	No.	LEN	MAT	QTY	APEX HEIGHT	LEFT PITCH	RIGHT PITCH	UNCROPPED LENGTH	UNCROPPED HEIGHT	WEIGHT
C9075ra	001	986.8	0.75	1	N/A	1 deg	-	987	247	2.3
C9075ra	002	194.8	0.75	1				Precamber = 0.0 mm	DETAILER	DETAILED
C9075ra	003	406.9	0.75	1	VANTAGE_DS	21-10-2019	1:6			
C9075ra	004	201.1	0.75	1	JOB NUMBER		TRUSS			
C9075ra	010	267.1	0.75	1	TSF_4413		T004			
TRUSSTITE				6	FABRICATOR:	TRUE STEEL FRAMES			Machine Type	
					CLIENT REF:	4 REDWOOD ST, ROSTREVOR				
					CUSTOMER :	BERT FARINA CONSTRUCTION				

Page 1 of 1

smart: YES flush: YES
restraint: none

LEFT ← → RIGHT

Connection Table		
A	HEEL_HS	SC-HEEL-HS-F-90-75-1
B	APEX_HS	SC-APEX-HS-F-90-75-1
C	PROP	SC-PROP-90-75-2

ANALYSIS		QTY
Status	PASS	1
Approved BY		

Chord - Web Connections

040-3

Part Id
Total no. fasteners at each end of the web

Connection type: (Apex,knee,heel,elbow,chordpt)

SC-HEEL-A-75-10-6

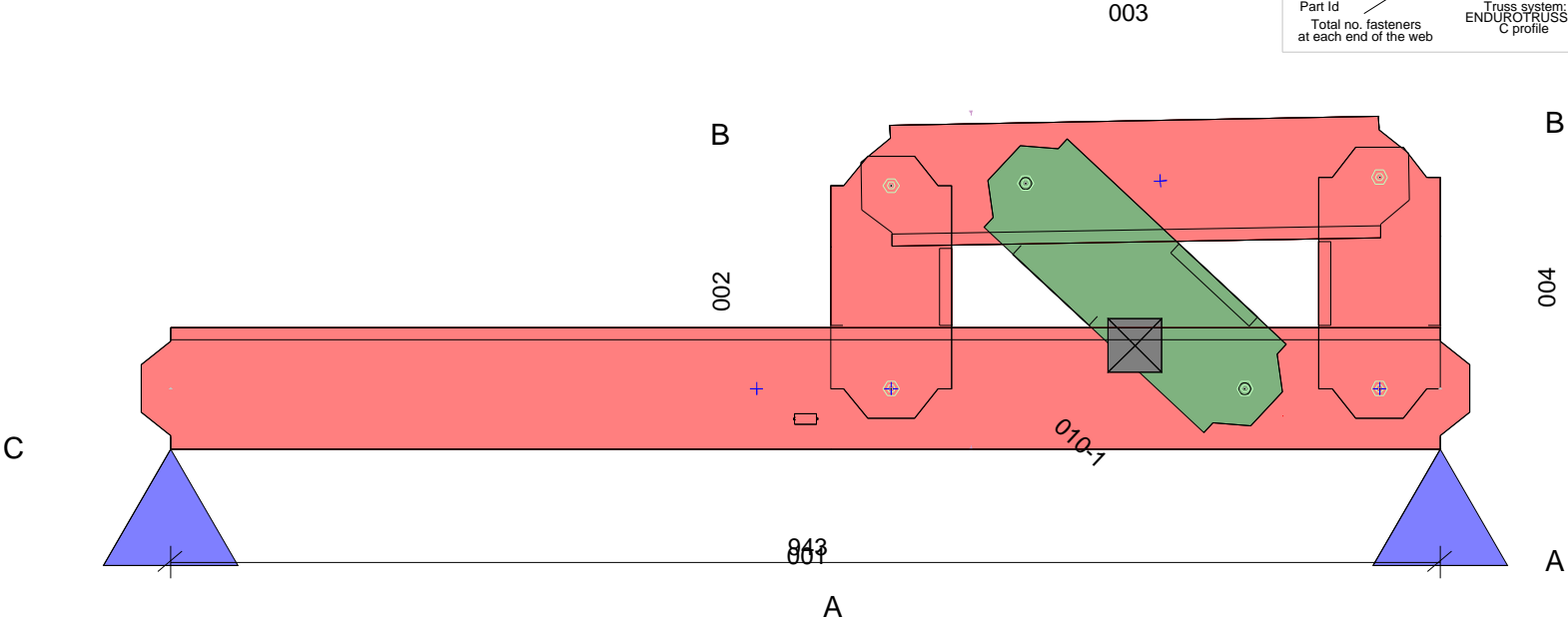
Truss system: ENDUROTRUSS (c) C profile

Channel depth: Depth of channel -section in mm

Channel gauge: (75 = 0.75 mm BMT 10 = 1.0 mm BMT) etc

Connection variant: (A is heel with no stiffener)

Fastener number: Total number of fasteners used in the connection including locating truss screw and reinforcing screws



QUALITY CHECK: Top of TOP CHORD to Bottom of BOTTOM CHORD: 251

Chords and webs placed flange-DOWN.

Min screws per conn: 1 (Screw locations diagrammatic only. Refer connection sheet for details.)

PARTS LIST (per truss)					ASSEMBLY DETAILS			TRUSS DETAILS		
DESCRIPTION	No.	LEN	MAT	QTY	APEX HEIGHT	LEFT PITCH	RIGHT PITCH	UNCROPPED LENGTH	UNCROPPED HEIGHT	WEIGHT
C9075ra	001	986.8	0.75	1	N/A	1 deg	-	987	247	2.3
C9075ra	002	194.8	0.75	1				Precamber = 0.0 mm	DETAILER	DETAILED
C9075ra	003	406.9	0.75	1	VANTAGE_DS	21-10-2019	1:6			
C9075ra	004	201.1	0.75	1	JOB NUMBER		TRUSS			
C9075ra	010	267.1	0.75	1	TSF_4413		T005			
TRUSSTITE				6	FABRICATOR:	TRUE STEEL FRAMES		Machine Type		ENDUROTRUSS
					CLIENT REF:	4 REDWOOD ST, ROSTREVOR				
					CUSTOMER :	BERT FARINA CONSTRUCTION		Page 1 of 1		

smart: YES flush: YES
restraint: none

LEFT ← → RIGHT

Connection Table		
A	HEEL_HS	SC-HEEL-HS-F-90-75-1
B	APEX_HS	SC-APEX-HS-F-90-75-1
C	PROP	SC-PROP-90-75-2

ANALYSIS		QTY
Status	PASS	1
Approved BY		

Chord - Web Connections

040-3

Part Id
Total no. fasteners at each end of the web

Connection type: (Apex,knee,heel,elbow,chordpt)

SC-HEEL-A-75-10-6

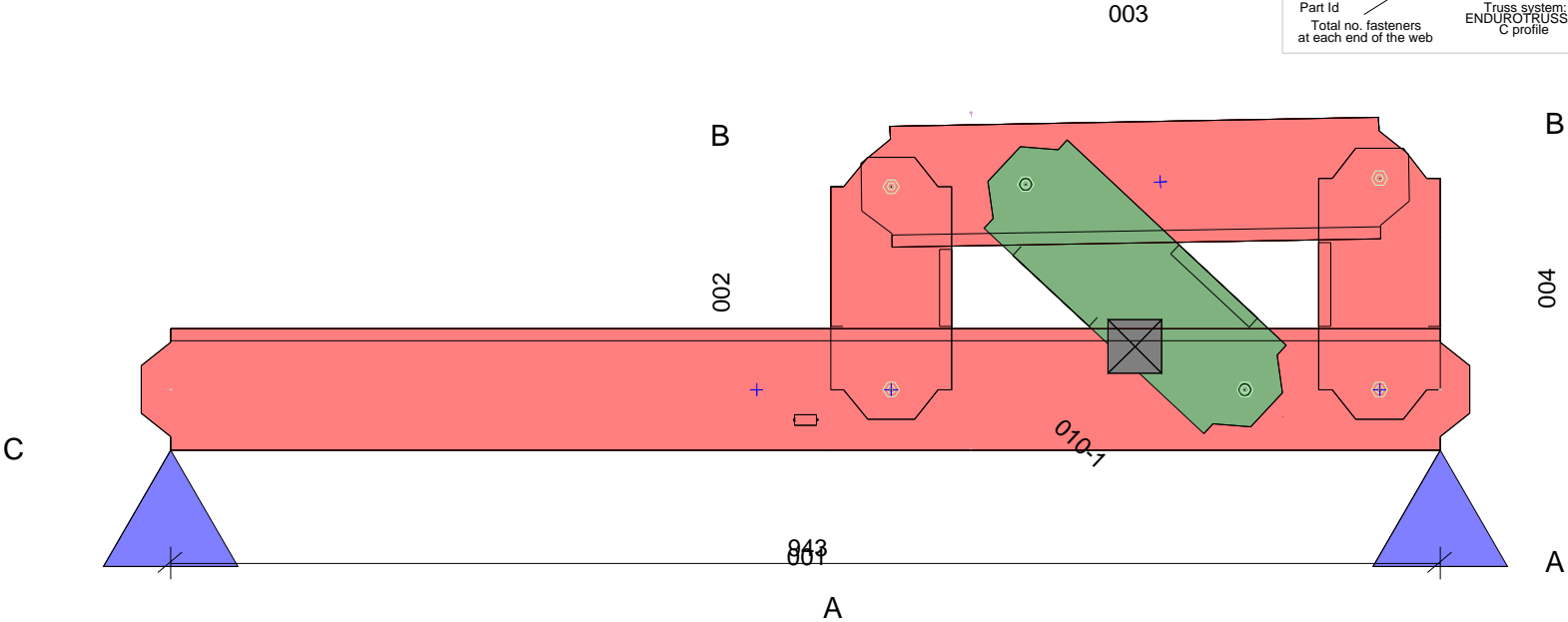
Truss system: ENDUROTRUSS (c) C profile

Channel depth: Depth of channel -section in mm

Channel gauge: (75 = 0.75 mm BMT 10 = 1.0 mm BMT) etc

Connection variant: (A is heel with no stiffener)

Fastener number: Total number of fasteners used in the connection including locating truss screw and reinforcing screws



QUALITY CHECK: Top of TOP CHORD to Bottom of BOTTOM CHORD: 251

Chords and webs placed flange-DOWN.

Min screws per conn: 1 (Screw locations diagrammatic only. Refer connection sheet for details.)

PARTS LIST (per truss)					ASSEMBLY DETAILS			TRUSS DETAILS			
DESCRIPTION	No.	LEN	MAT	QTY	APEX HEIGHT	LEFT PITCH	RIGHT PITCH	UNCROPPED LENGTH	UNCROPPED HEIGHT	WEIGHT	
C9075ra	001	986.8	0.75	1	N/A	1 deg	-	987	247	2.3	
C9075ra	002	194.8	0.75	1				Precamber = 0.0 mm	DETAILER	DETAILED	SCALE
C9075ra	003	406.9	0.75	1	VANTAGE_DS	21-10-2019	1:6				
C9075ra	004	201.1	0.75	1	JOB NUMBER		TRUSS				
C9075ra	010	267.1	0.75	1	TSF_4413		T006				
TRUSSTITE				6	FABRICATOR:	TRUE STEEL FRAMES			Machine Type		ENDUROTRUSS
					CLIENT REF:	4 REDWOOD ST, ROSTREVOR					Page 1 of 1
					CUSTOMER :	BERT FARINA CONSTRUCTION					

smart: YES flush: YES
restraint: none

LEFT ← → RIGHT

Connection Table		
A	HEEL_HS	SC-HEEL-HS-F-90-75-1
B	APEX_HS	SC-APEX-HS-F-90-75-1
C	PROP	SC-PROP-90-75-2

ANALYSIS		QTY
Status	PASS	1
Approved BY		

Chord - Web Connections

040-3

Part Id
Total no. fasteners at each end of the web

Connection type:
(Apex,knee,heel,elbow,chordpt)

Channel depth:
Depth of channel -section in mm

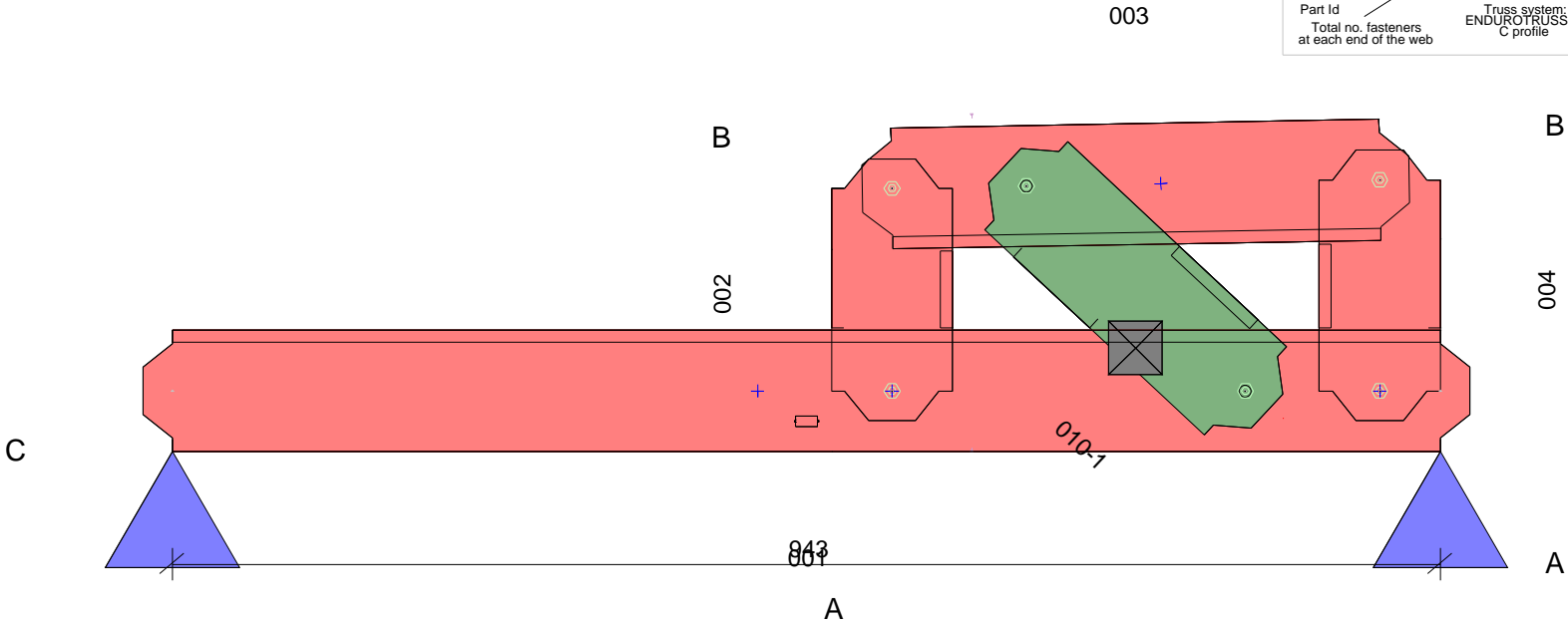
Fastener number:
Total number of fasteners used in the connection including locating truss screw and reinforcing screws

SC-HEEL-A-75-10-6

Truss system:
ENDUROTRUSS (c)
C profile

Connection variant:
(A is heel with no stiffener)

Channel gauge:
(75 = 0.75 mm BMT
10 = 1.0 mm BMT etc)



QUALITY CHECK: Top of TOP CHORD to Bottom of BOTTOM CHORD: 251

Chords and webs placed flange-DOWN.

Min screws per conn: 1 (Screw locations diagrammatic only. Refer connection sheet for details.)

PARTS LIST (per truss)					ASSEMBLY DETAILS			TRUSS DETAILS		
DESCRIPTION	No.	LEN	MAT	QTY	APEX HEIGHT	LEFT PITCH	RIGHT PITCH	UNCROPPED LENGTH	UNCROPPED HEIGHT	WEIGHT
C9075ra	001	986.8	0.75	1	N/A	1 deg	-	987	247	2.3
C9075ra	002	194.8	0.75	1				Precamber = 0.0 mm	DETAILER	DETAILED
C9075ra	003	406.9	0.75	1	VANTAGE_DS	21-10-2019	1:6			
C9075ra	004	201.1	0.75	1	JOB NUMBER		TRUSS			
C9075ra	010	267.1	0.75	1	FABRICATOR:		TRUE STEEL FRAMES			
TRUSSTITE				6	CLIENT REF:		4 REDWOOD ST, ROSTREVOR			
					CUSTOMER :		BERT FARINA CONSTRUCTION		Machine Type	
									ENDUROTRUSS	
									T007	
									Page 1 of 1	

smart: YES flush: YES
restraint: none

LEFT ← → RIGHT

Connection Table		
A	HEEL_HS	SC-HEEL-HS-F-90-75-1
B	APEX_HS	SC-APEX-HS-F-90-75-1
C	PROP	SC-PROP-90-75-2

ANALYSIS		QTY
Status	PASS	1
Approved BY		

Chord - Web Connections

040-3

Part Id
Total no. fasteners at each end of the web

Connection type: (Apex,knee,heel,elbow,chordpt)

SC-HEEL-A-75-10-6

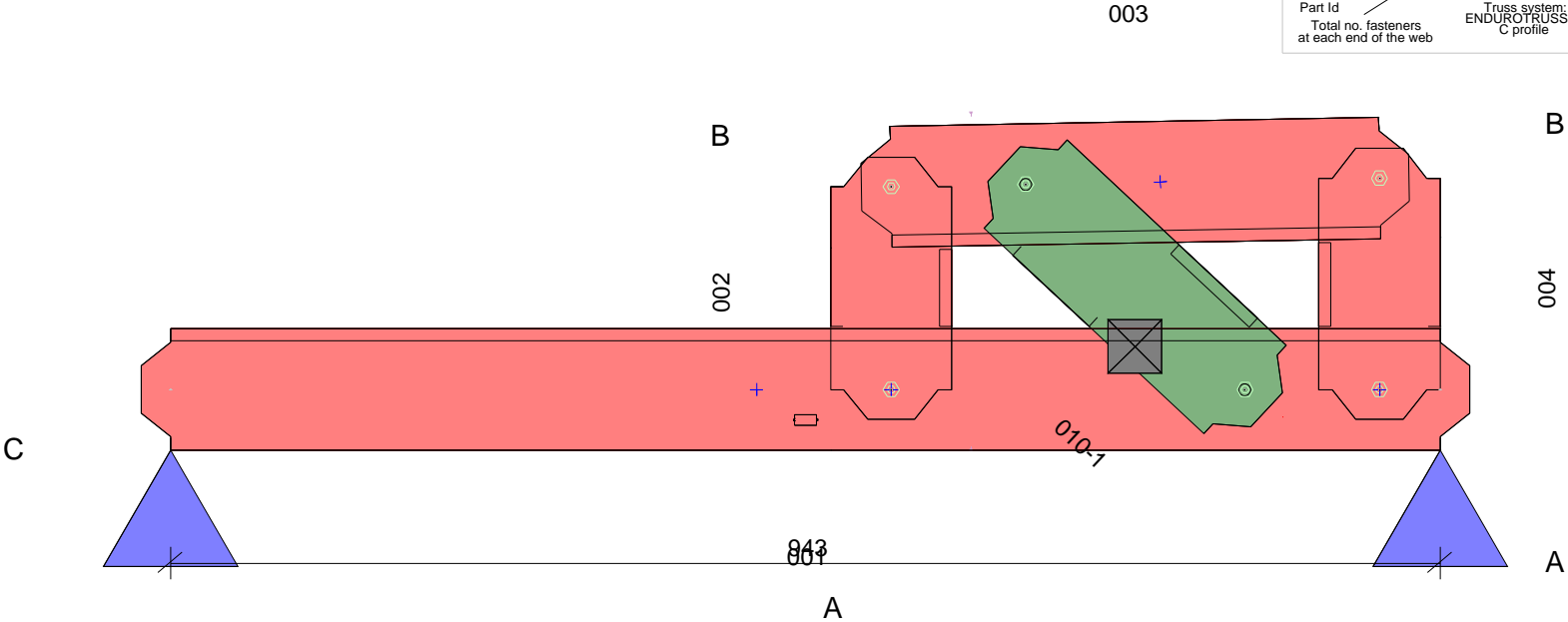
Truss system: ENDUROTRUSS (c)
C profile

Channel depth: Depth of channel -section in mm

Channel gauge: (75 = 0.75 mm BMT
10 = 1.0 mm BMT)
etc

Connection variant: (A is heel with no stiffener)

Fastener number: Total number of fasteners used in the connection including locating truss screw and reinforcing screws



Loading: USER-W34N(m,6,-0.2,-0.13,-0.25,0,0,0,0,0,0,-1.1,-1.1,0,1200,0,0,0,0,0,600,0,0,A,1,1,1,1,1,,N1,,,,,5000,S,8000,,SEALED,)

smart: YES flush: YES
restraint: none

LEFT ← → RIGHT

Connection Table		
A	HEEL_HS	SC-HEEL-HS-F-90-75-1
B	APEX_HS	SC-APEX-HS-F-90-75-1

ANALYSIS		QTY
Status	PASS	1
Approved BY		

Chord - Web Connections

040-3

Part Id
Total no. fasteners at each end of the web

Connection type: (Apex,knee,heel,elbow,chordpt)

SC-HEEL-A-75-10-6

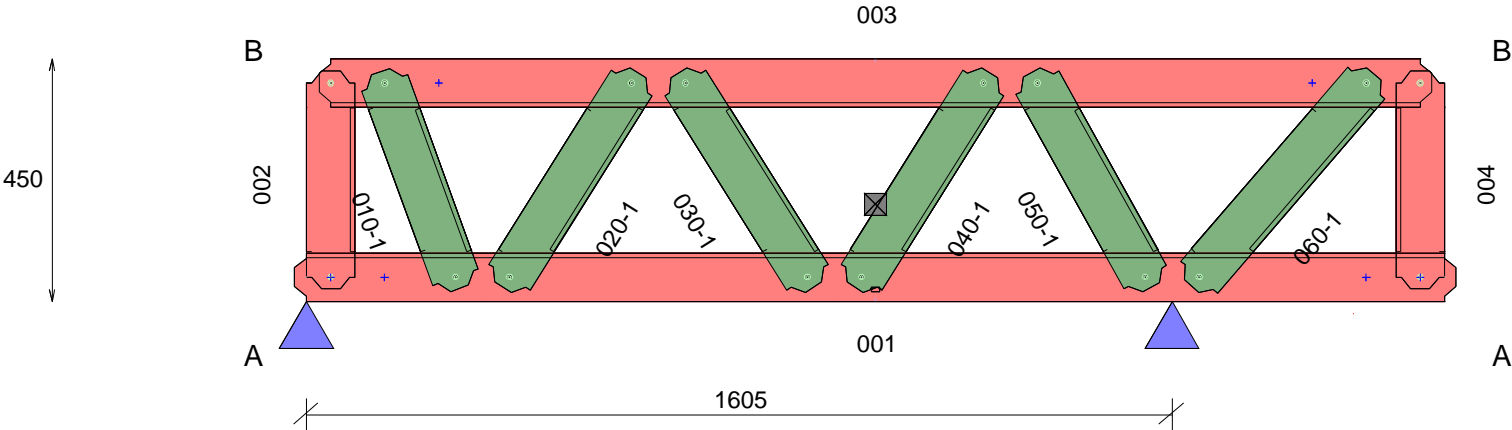
Truss system: ENDUROTRUSS (c)
C profile

Channel depth: Depth of channel -section in mm

Channel gauge: (75 = 0.75 mm BMT
10 = 1.0 mm BMT)
etc

Fastener number: Total number of fasteners used in the connection including locating truss screw and reinforcing screws

Connection variant: (A is heel with no stiffener)



QUALITY CHECK: Top of TOP CHORD to Bottom of BOTTOM CHORD: 450

Chords and webs placed flange-DOWN.

Min screws per conn: 1 (Screw locations diagrammatic only. Refer connection sheet for details.)

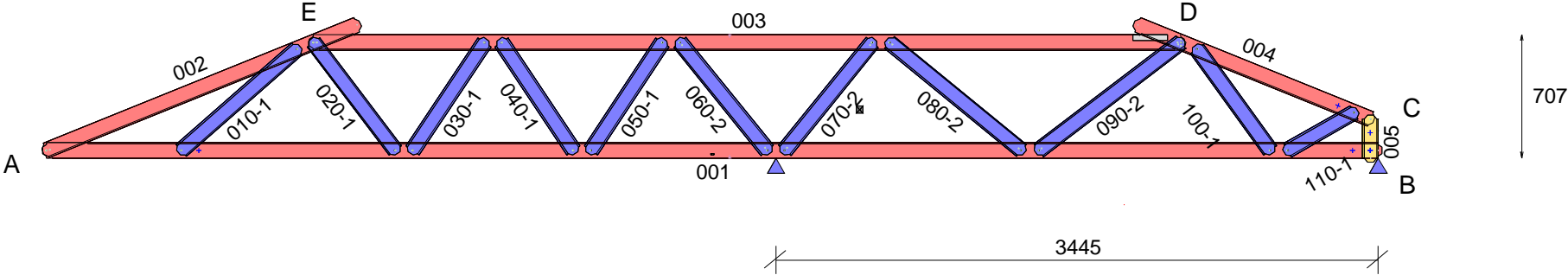
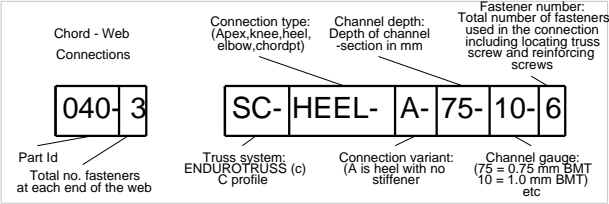
PARTS LIST (per truss)					ASSEMBLY DETAILS			TRUSS DETAILS			
DESCRIPTION	No.	LEN	MAT	QTY	APEX HEIGHT	LEFT PITCH	RIGHT PITCH	UNCROPPED LENGTH	UNCROPPED HEIGHT	WEIGHT	
C9075ra	001	2154	0.75	1	N/A	-	-	2154	450	8.6	
C9075ra	002	404	0.75	1				Precamber = 0.0 mm	DETAILER	DETAILED	SCALE
C9075ra	003	2064	0.75	1	VANTAGE_DS	21-10-2019	1:15				
C9075ra	004	404	0.75	1	JOB NUMBER		TRUSS				
C9075ra	010	427.2	0.75	1	TSF_4413		T009				
C9075ra	020	469.2	0.75	1	FABRICATOR:		TRUE STEEL FRAMES				
C9075ra	030	469.2	0.75	1	CLIENT REF:		4 REDWOOD ST, ROSTREVOR		Machine Type		
C9075ra	040	469.2	0.75	1	CUSTOMER :		BERT FARINA CONSTRUCTION		ENDUROTRUSS		
C9075ra	050	455.8	0.75	1						Page 1 of 1	
C9075ra	060	519	0.75	1							
TRUSSTITE				16							

smart: YES flush: NO
restraint: none

LEFT ← → RIGHT

ANALYSIS		QTY
Status	PASS	1
Approved BY		

Connection Table		
A	HEEL	SC-HEEL-A-90-75-2
B	HEEL_HS	SC-HEEL-HS-90-75-1
C	APEX_HS	SC-APEX-HS-90-75-1
D	KNEE	SC-KNEE-C-90-75-5
E	KNEE	SC-KNEE-A-90-75-2



QUALITY CHECK: Top of TOP CHORD to Bottom of BOTTOM CHORD: 707
Chords placed flange-DOWN, Webs placed flange-UP.
Min screws per conn: 1 (Screw locations diagrammatic only. Refer connection sheet for details.)

PARTS LIST (per truss)										ASSEMBLY DETAILS			TRUSS DETAILS		
DESCRIPTION	No.	LEN	MAT	QTY	DESCRIPTION	No.	LEN	MAT	QTY	APEX HEIGHT	LEFT PITCH	RIGHT PITCH	UNCROPPED LENGTH	UNCROPPED HEIGHT	WEIGHT
C9075ra	001	7662.7	0.75	1	C9075ra	060	838.1	0.75	1	N/A	22 deg	22 deg	7678	834	27.8
C9075ra	002	1958.9	0.75	1	C9075ra	070	838.1	0.75	1				Precamber = 0.0 mm	DETAILER	DETAILED
C9075ra	003	5007.4	0.75	1	C9075ra	080	1018.2	0.75	1	VANTAGE_DS	21-10-2019	1:40			
C9075ra	004	1480.3	0.75	1	C9075ra	090	1064.3	0.75	1	JOB NUMBER	TRUSS				
C9075ra	005	268.3	0.75	1	C9075ra	100	758	0.75	1	TSF_4413		T100			
C9075ra	010	923.9	0.75	1	TRUSSTITE				25	FABRICATOR:	TRUE STEEL FRAMES				
C9075ra	110	482.2	0.75	1	SCREW-12-14x20-HEX				14	CLIENT REF:	4 REDWOOD ST, ROSTREVOR		Machine Type	ENDUROTRUSS	
C9075ra	020	818.6	0.75	1	ANG-35x35x1.0-200				1	CUSTOMER :	BERT FARINA CONSTRUCTION				
C9075ra	030	784.5	0.75	1											
C9075ra	040	784.5	0.75	1											
C9075ra	050	784.5	0.75	1											

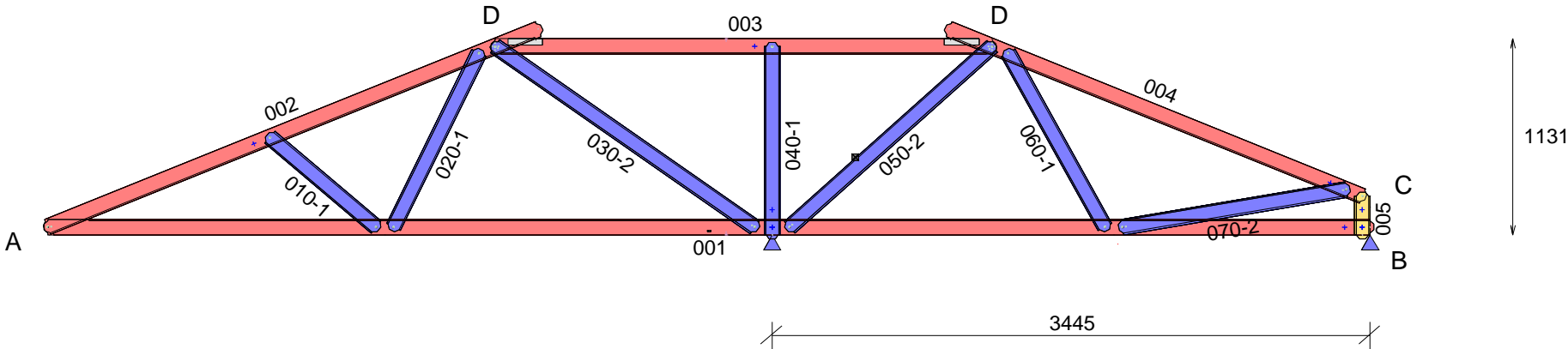
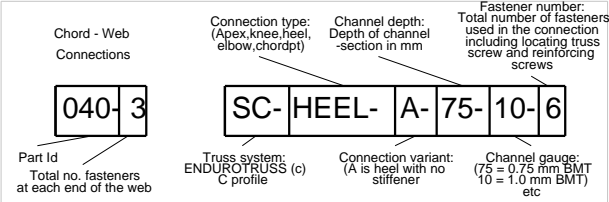
Page 1 of 1

smart: YES flush: NO
restraint: none

LEFT ← → RIGHT

Connection Table		
A	HEEL	SC-HEEL-A-90-75-2
B	HEEL_HS	SC-HEEL-HS-90-75-1
C	APEX_HS	SC-APEX-HS-90-75-2
D	KNEE	SC-KNEE-C-90-75-5

ANALYSIS		QTY
Status	PASS	1
Approved BY		



QUALITY CHECK: Top of TOP CHORD to Bottom of BOTTOM CHORD: 1131
Chords placed flange-DOWN, Webs placed flange-UP.
Min screws per conn: 1 (Screw locations diagrammatic only. Refer connection sheet for details.)

PARTS LIST (per truss)										ASSEMBLY DETAILS			TRUSS DETAILS						
DESCRIPTION	No.	LEN	MAT	QTY	DESCRIPTION	No.	LEN	MAT	QTY	APEX HEIGHT	LEFT PITCH	RIGHT PITCH	UNCROPPED LENGTH	UNCROPPED HEIGHT	WEIGHT				
C9075ra	001	7662.7	0.75	1	C9075ra	070	1351.4	0.75	1	N/A	22 deg	22 deg	7678	1259	28.1				
C9075ra	002	3091.3	0.75	1	TRUSSTITE				17							DETAILER	DETAILED	SCALE	
C9075ra	003	2907.4	0.75	1	SCREW-12-14x20-HEX				16							VANTAGE_DS	21-10-2019	1:40	
C9075ra	004	2612.7	0.75	1	ANG-35x35x1.0-200				2							JOB NUMBER		TRUSS	
C9075ra	005	268.3	0.75	1						FABRICATOR:	TRUE STEEL FRAMES					TSF_4413		T101	
C9075ra	010	844.7	0.75	1									CLIENT REF:	4 REDWOOD ST, ROSTREVOR		Machine Type			ENDUROTRUSS
C9075ra	020	1162.2	0.75	1												CUSTOMER :	BERT FARINA CONSTRUCTION		
C9075ra	030	1867.3	0.75	1															
C9075ra	040	1130.2	0.75	1															
C9075ra	050	1607.6	0.75	1															
C9075ra	060	1192.7	0.75	1															

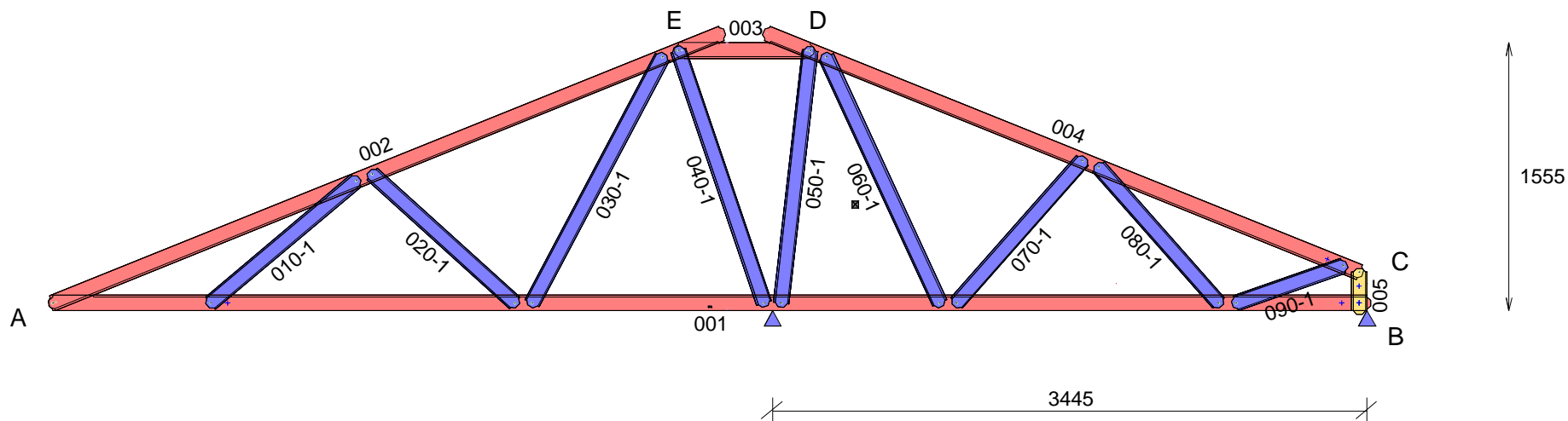
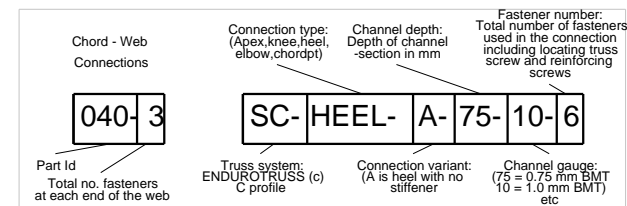
Page 1 of 1

smart: YES flush: NO
restraint: none

LEFT  RIGHT

ANALYSIS		QTY
Status	PASS	1
Approved BY		

Connection Table		
A	HEEL	SC-HEEL-A-90-75-2
B	HEEL_HS	SC-HEEL-HS-90-75-1
C	APEX_HS	SC-APEX-HS-90-75-2
D	KNEE	SC-KNEE-A-90-75-4
E	KNEE	SC-KNEE-A-90-75-3



Min screws per conn: 1 (Screw locations diagrammatic only. Refer connection sheet for details.)

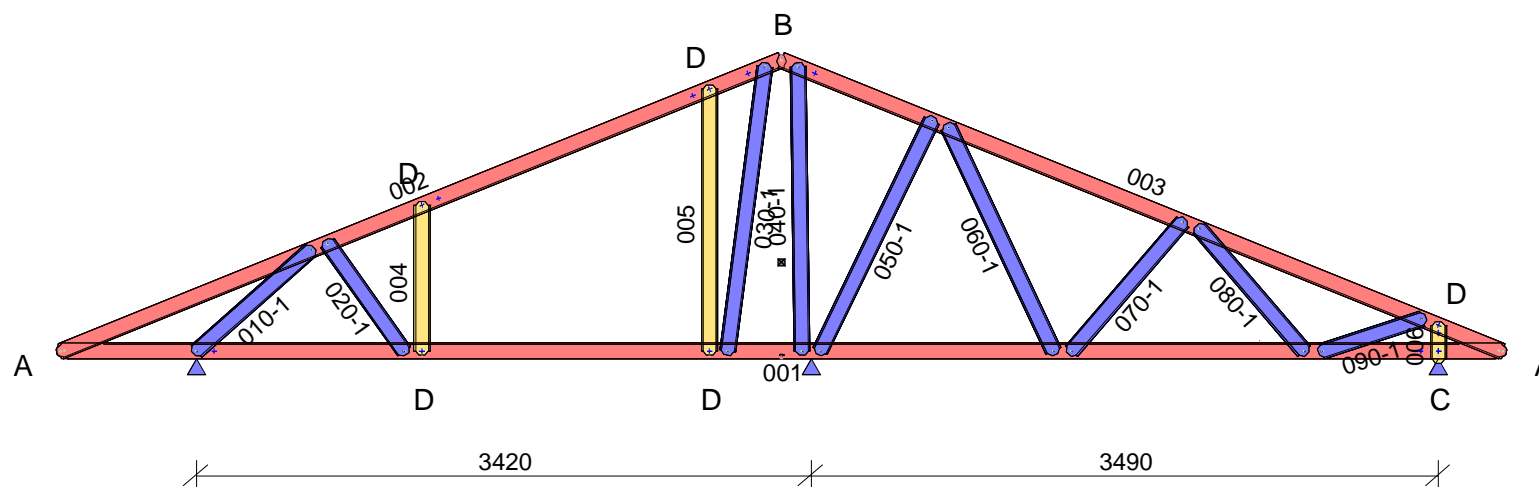
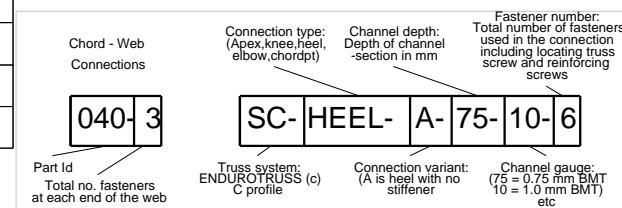
PARTS LIST (per truss)										ASSEMBLY DETAILS			TRUSS DETAILS		
DESCRIPTION	No.	LEN	MAT	QTY	DESCRIPTION	No.	LEN	MAT	QTY	APEX HEIGHT	LEFT PITCH	RIGHT PITCH	UNCROPPED LENGTH	UNCROPPED HEIGHT	WEIGHT
C9075ra	001	7662.7	0.75	1	C9075ra	070	1146.9	0.75	1	N/A	22 deg	22 deg	7678	1683	30.8
C9075ra	002	4223.8	0.75	1	C9075ra	080	1096.5	0.75	1				Precamber = 0.0 mm	DETAILER	DETAILED
C9075ra	003	807.4	0.75	1	C9075ra	090	702.3	0.75	1	VANTAGE_DS	21-10-2019	1:40			
C9075ra	004	3745.2	0.75	1	TRUSS TITE				21	JOB NUMBER	TRUSS				
C9075ra	005	268.3	0.75	1	SCREW-12-14x20-HEX				7	TSF_4413	T102				
C9075ra	010	1147	0.75	1						CLIENT REF:	4 REDWOOD ST, ROSTREVOR	Machine Type		ENDUROTRUSS	
C9075ra	020	1159.4	0.75	1						CUSTOMER :	BERT FARINA CONSTRUCTION				
C9075ra	030	1659.4	0.75	1											
C9075ra	040	1591.4	0.75	1											
C9075ra	050	1518.9	0.75	1											
C9075ra	060	1616.2	0.75	1											

smart: YES flush: NO
restraint: none

LEFT  RIGHT

Connection Table		
A	HEEL	SC-HEEL-A-90-75-2
B	APEX	SC-APEX-A-90-75-1
C	CHORDPT	SC-CHORDPT-S-90-55-2
D	CHORDPT	SC-CHORDPT-B-90-75-2

ANALYSIS		QTY
Status	PASS	3
Approved BY		



Min screws per conn: 1 (Screw locations diagrammatic only. Refer connection sheet for details.)

PARTS LIST (per truss)										ASSEMBLY DETAILS			TRUSS DETAILS			
DESCRIPTION	No.	LEN	MAT	QTY	DESCRIPTION	No.	LEN	MAT	QTY	APEX HEIGHT	LEFT PITCH	RIGHT PITCH	UNCROPPED LENGTH	UNCROPPED HEIGHT	WEIGHT	
C9075ra	001	8061.5	0.75	1	C9075ra	060	1418.9	0.75	1	1693	22 deg	22 deg	8092	1737	32.4	
C9075ra	002	4367.6	0.75	1	C9075ra	070	991.6	0.75	1	Precamber = 0.0 mm			DETAILER	DETAILED	SCALE	
C9075ra	003	4367.6	0.75	1	C9075ra	080	941.3	0.75	1				VANTAGE_DS	21-10-2019	1:45	
C9075ra	004	855.6	0.75	1	C9075ra	090	627.4	0.75	1				JOB NUMBER		TRUSS	
C9075ra	005	1502	0.75	1	TRUSSTITE				27				TSF_4413		T103	
C9075ra	006	231.9	0.75	1	SCREW-12-14x20-HEX				8	FABRICATOR:	TRUE STEEL FRAMES		Machine Type ENDUROTRUSS			
C9075ra	010	893.2	0.75	1					CLIENT REF:	4 REDWOOD ST, ROSTREVOR						
C9075ra	020	778.9	0.75	1					CUSTOMER :	BERT FARINA CONSTRUCTION						
C9075ra	030	1639.7	0.75	1												
C9075ra	040	1626.3	0.75	1												
C9075ra	050	1468.3	0.75	1									Page 1 of 1			