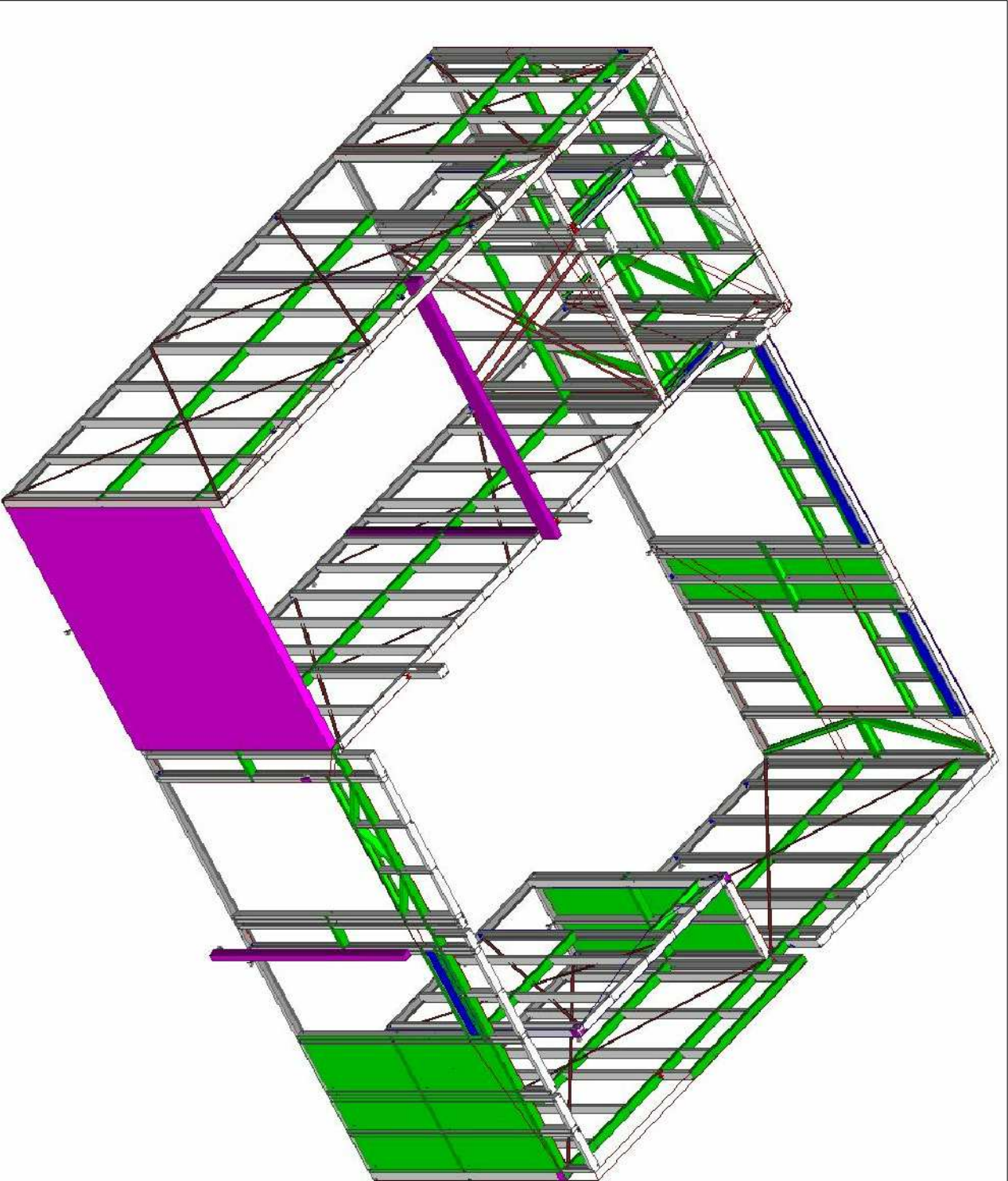
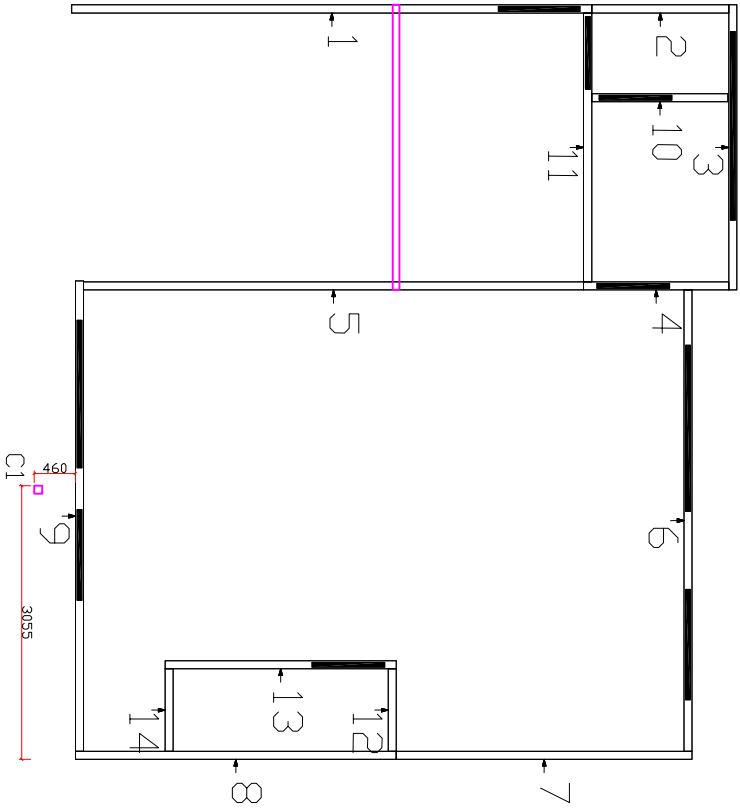



STRUCTURAL STEEL TO BE SUPPLIED BY BUILDER:

C1: 89x89x5.0 SHS (REFER TO ENGINEERS SPECIFICATION).
B8: 250 PFC (REFER TO ENGINEERS SPECIFICATION).
L1: 250 PFC (REFER TO ENGINEERS SPECIFICATION).

ADDITIONAL NOTES:

-ARROWS SHOW THE DIRECTION THE WALLS ARE VIEWED FROM,
-CHALK OUT SLAB USING ARCHITECTURAL DRAWINGS NOT TSF LAYOUTS



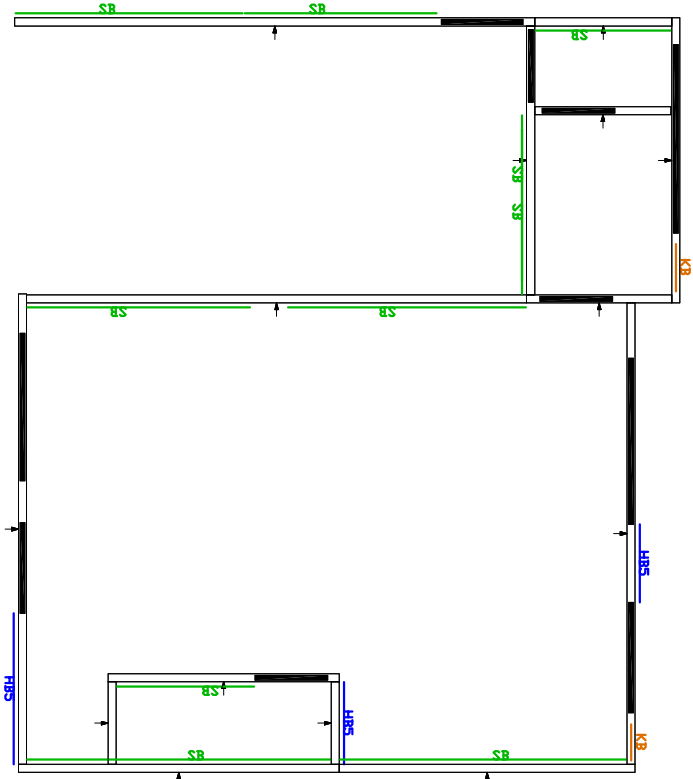
NO.	DATE:	BY:	REVISION:	<div><p><i>Steel, the true way to build!</i></p><p>TRUE STEEL FRAMES</p><p>31 HEWITTS RD, EDINBURGH NORTH S113 SITE ENQUIRIES – Ph: (08) 8252 0046</p></div>
1				
2				
3				
4				
WALL FRAME LAYOUT				
GROUND FLOOR PLAN				
DW/4 #4 Redwood St, Rostrevor				
TSF_4413 – BERT FARINA CONSTRUCTIONS				
WINDSPEED:			N1	DETAILED BY:
WALL THICKNESS:			90mmmm	VANTAGE
L.B.W HEIGHT:			2745mm	CHECKED: Rebecca
N.L.B.W HEIGHT:			2710mm	
EXTERNAL CLADDING:			Refer Elevations	


SHEET LEGEND:

- SB = 1.0x30x550 STRAP BRACE ON FRAME FACE
- KB = 0.75 GAUGE K-BRACE WITHIN FRAME
- HB = 5mm HARDIBRACE FOR SHEET BRACING

ADDITIONAL NOTES:

-ARROWS SHOW THE DIRECTION THE WALLS ARE VIEWED FROM.
-STRAP BRACING IS TO BE INSTALLED ON THE SIDE OF A FRAME HIGHLIGHTED
-MINIMUM BRACING REQUIREMENTS PROVIDED BY AUSTRUCT ENG.



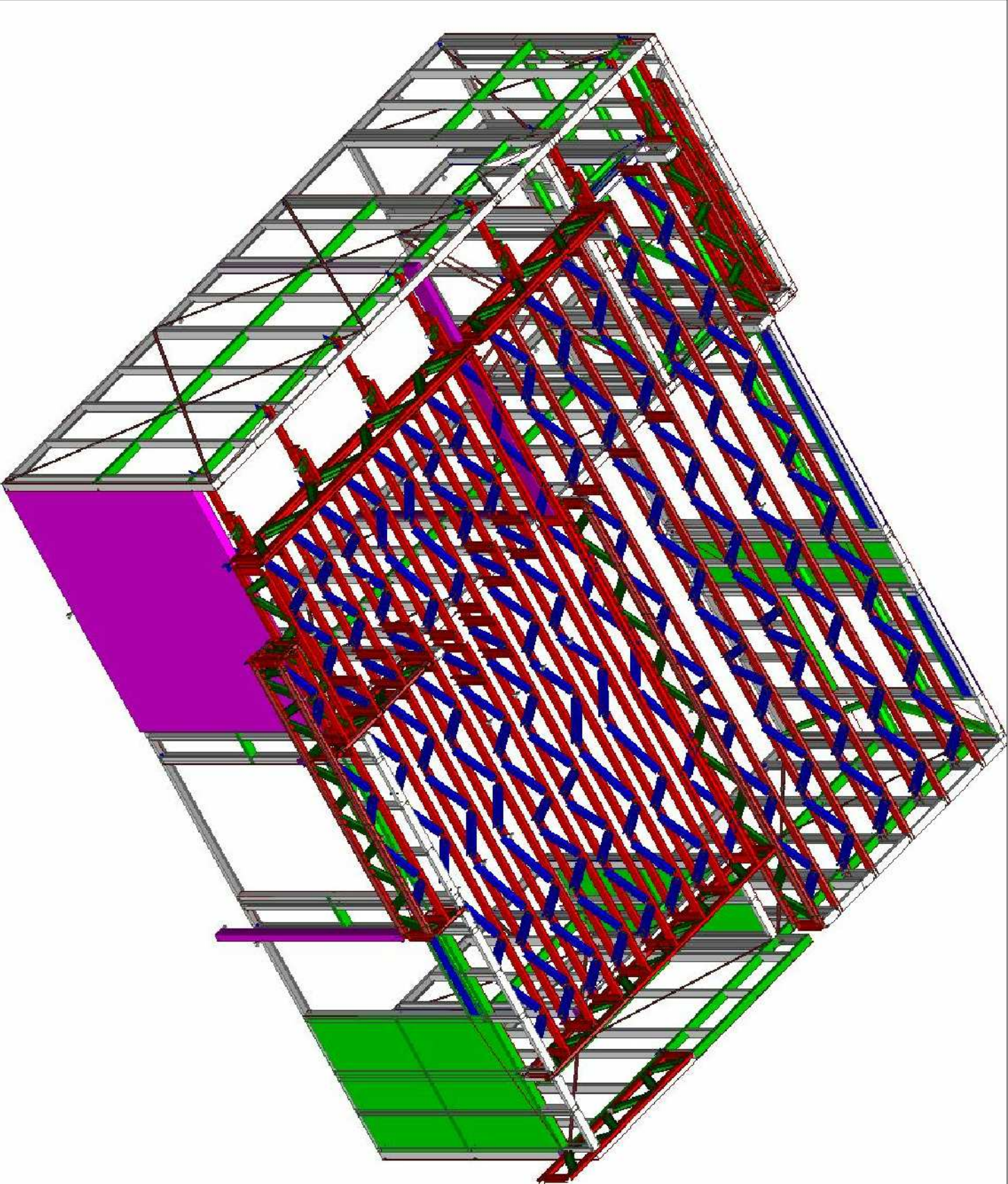
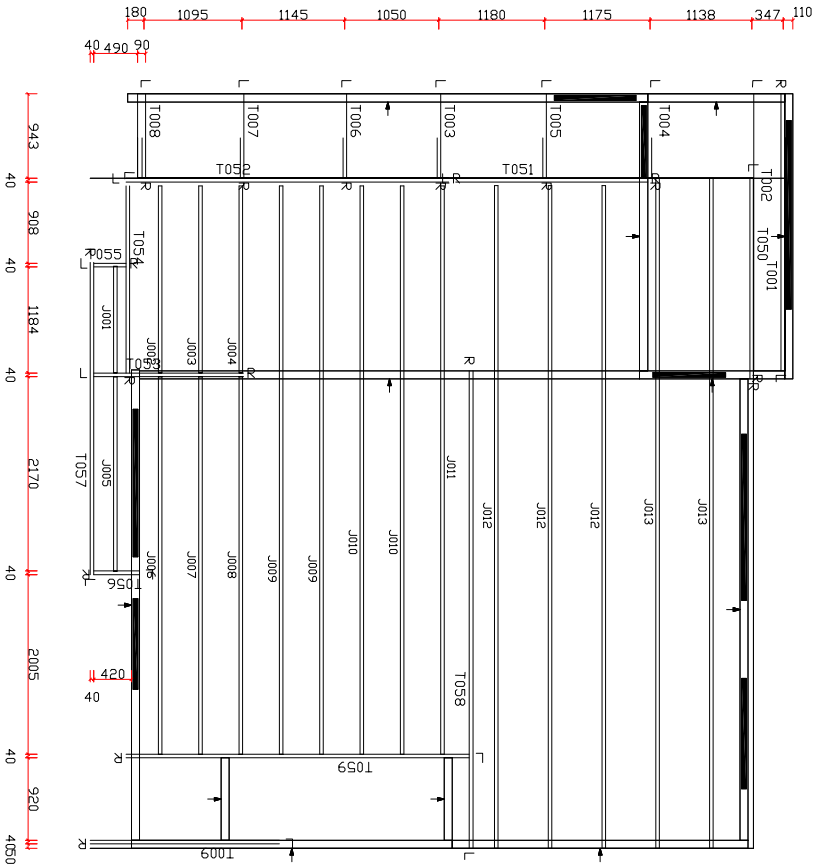
NO.	DATE:	BY:	REVISION:	<div><p>TRUE STEEL FRAMES</p><p><i>Steel, the true way to build!</i></p></div> <div>31 HEWITTS RD, EDINBURGH NORTH S113 SITE ENQUIRIES - Ph: (08) 8252 0046</div>	<div>WALL BRACING LAYOUT</div> <div>GROUND FLOOR PLAN</div>			WINDSPEED:		N1	DETAILED BY: VANTAGE
1			WALL THICKNESS:					90mmmm			
2			L.B.W HEIGHT:					2745mm			
3			N.L.B.W HEIGHT:					2710mm			
4			EXTERNAL CLADDING:					Refer Elevations			
					DW/4 #4 Redwood St, Rostrevor					CHECKED: Rebecca	
					TSF_4413 - BERT FARINA CONSTRUCTIONS						


STRUCTURAL STEEL TO BE SUPPLIED BY BUILDER:

C1: 89x89x5.0 SHS (REFER TO ENGINEERS SPECIFICATION),
B8: 250 PFC (REFER TO ENGINEERS SPECIFICATION),
L1: 250 PFC (REFER TO ENGINEERS SPECIFICATION).

ADDITIONAL NOTES:

-ARROWS SHOW THE DIRECTION THE WALLS ARE VIEWED FROM,
-CHALK OUT SLAB USING ARCHITECTURAL DRAWINGS NOT TSF LAYOUTS



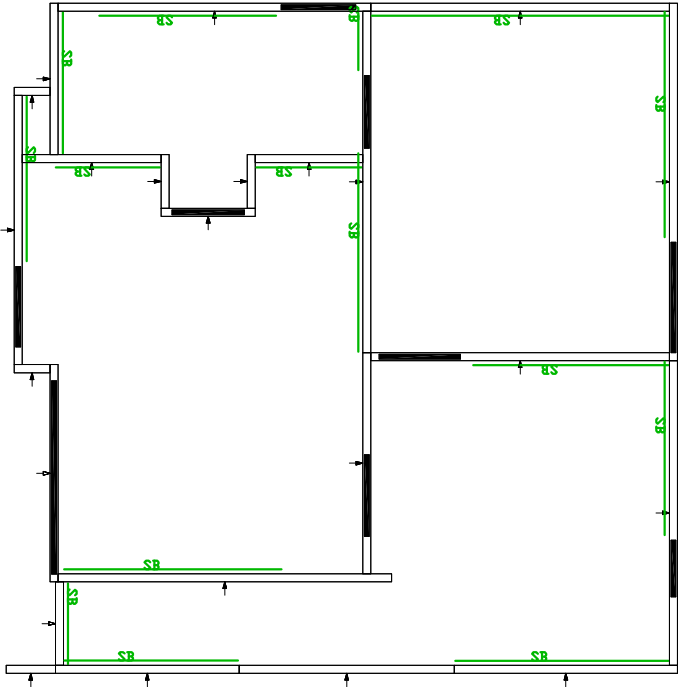
NO.	DATE:	BY:	REVISION:	<div><p>Steel, the true way to build!</p><p>31 HEWITTS RD, EDINBURGH NORTH S113 SITE ENQUIRIES - Ph: (08) 8252 0046</p></div>	<div><div>FLOOR JOIST & TRUSS LAYOUT</div><div>GROUND FLOOR PLAN</div><div>DW4 #4 Redwood St, Rostrevor</div><div>TSF_4413 - BERT FARINA CONSTRUCTIONS</div></div>	<div>WINDSPEED: N1</div> <div>ROOF TYPE: HIP + VALLEY</div> <div>ROOF PITCH: 25 deg</div> <div>SECTION TYPE: 90 C</div> <div>ROOF FEATURES:</div>	<div>DETAILED BY: VANTAGE</div> <div>CHECKED: Rebecca</div>
1							
2							
3							
4							

SHEET LEGEND:

SB = 1.0x30x550 STRAP BRACE ON FRAME FACE
KB = 0.75 GAUGE K-BRACE WITHIN FRAME
HB = 5mm HARDIBRACE FOR SHEET BRACING

ADDITIONAL NOTES:

-ARROWS SHOW THE DIRECTION THE WALLS ARE VIEWED FROM.
STRAP BRACING IS TO BE INSTALLED ON THE SIDE OF A FRAME HIGHLIGHTED



NO.	DATE:	BY:	REVISION:			
1				<div><div><div><div><div></div><div>TRUE STEEL FRAMES</div></div><div><div>Steel, the true way to build!</div></div></div><div><div>31 HEWITTS RD, EDINBURGH NORTH S113</div><div>SITE ENQUIRIES - Ph: (08) 8252 0046</div></div></div></div>		
2						
3						
4						
				WALL BRACING LAYOUT		
				FIRST FLOOR PLAN		
				DW/4 #4 Redwood St, Rostrevor		
				TSF_4413 - BERT FARINA CONSTRUCTIONS		
				WINDSPEED:	N1	DETAILED BY:
				WALL THICKNESS:	90mm	VANTAGE
				L.B.W HEIGHT:	2745mm	CHECKED: Rebecca
				N.L.B.W HEIGHT:	2710mm	
				EXTERNAL CLADDING:	Refer Elevations	

