

Loading: USER-W34N(m,6,-0.2,-0.13,-0.25,0,0,0,0,0,0,-1.1,-1.1,0,1200,0,0,0,0,0,600,0,0,A,1,1,1,1,1,,N1,,,,,5000,S,8000,,SEALED,)

smart: YES flush: YES  
restraint: none

LEFT ← → RIGHT

Connection Table		
A	HEEL_HS	SC-HEEL-HS-F-90-75-1
B	APEX_HS	SC-APEX-HS-F-90-75-1

ANALYSIS		QTY
Status	PASS	1
Approved BY		

Chord - Web Connections

040-3

Part Id  
Total no. fasteners at each end of the web

Connection type: (Apex,knee,heel,elbow,chordpt)

SC-HEEL-A-75-10-6

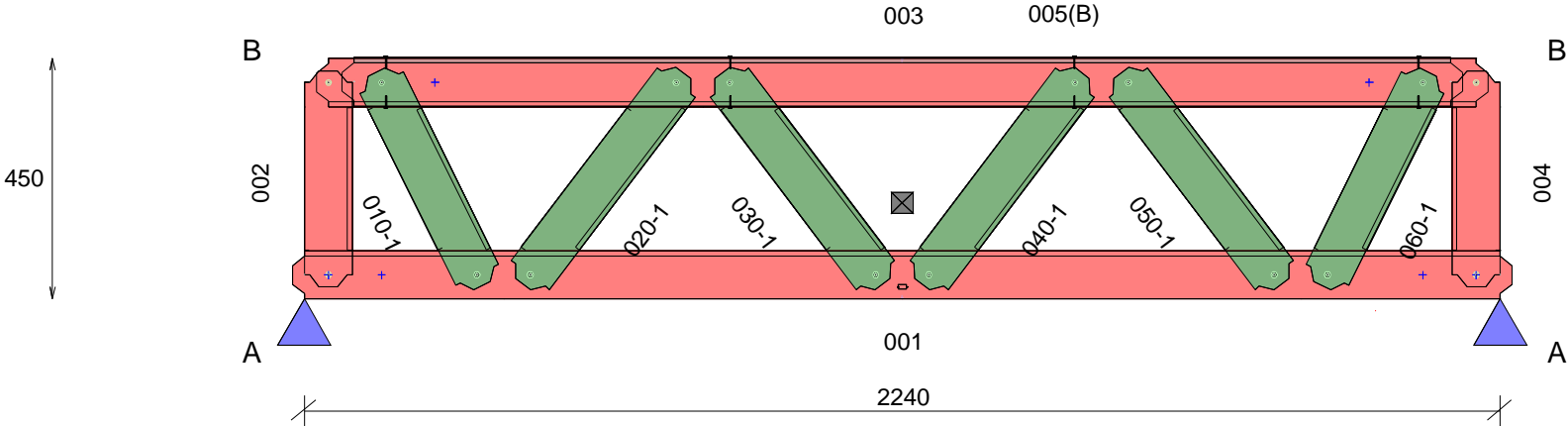
Truss system: ENDUROTRUSS (c)  
C profile

Channel depth: Depth of channel -section in mm

Channel gauge: (75 = 0.75 mm BMT  
10 = 1.0 mm BMT)  
etc

Fastener number: Total number of fasteners used in the connection including locating truss screw and reinforcing screws

Connection variant: (A is heel with no stiffener)



QUALITY CHECK: Top of TOP CHORD to Bottom of BOTTOM CHORD: 450  
Chords and webs placed flange-DOWN.  
Min screws per conn: 1 ( Screw locations diagrammatic only. Refer connection sheet for details.)

PARTS LIST (per truss)										ASSEMBLY DETAILS			TRUSS DETAILS					
DESCRIPTION	No.	LEN	MAT	QTY	DESCRIPTION	No.	LEN	MAT	QTY	APEX HEIGHT	LEFT PITCH	RIGHT PITCH	UNCROPPED LENGTH	UNCROPPED HEIGHT	WEIGHT			
C9075ra	001	2284	0.75	1	TRUSSTITE				16	N/A	-	-	2284	455	11.2			
C9075ra	002	404	0.75	1	SCREW-10-16x16-HEX				8									
C9075ra	003	2194	0.75	1						Precamber = 0.0 mm			DETAILER	DETAILED	SCALE			
C9075ra	004	404	0.75	1									VANTAGE_DS	21-10-2019	1:15			
C9075ra	005	2098	0.75	1									JOB NUMBER		TRUSS			
C9075ra	010	445.7	0.75	1									TSF_4413		T050			
C9075ra	020	496	0.75	1						FABRICATOR:	TRUE STEEL FRAMES		Machine Type		ENDUROTRUSS			
C9075ra	030	496	0.75	1						CLIENT REF:	4 REDWOOD ST, ROSTREVOR							
C9075ra	040	496	0.75	1						CUSTOMER :	BERT FARINA CONSTRUCTION							
C9075ra	050	496	0.75	1														
C9075ra	060	445.7	0.75	1														

Page 1 of 1

Loading: USER-W34N(m,6,-0.2,-0.13,-0.25,0,0,0,0,0,0,-1.1,-1.1,0,1200,0,0,0,0,0,0,600,0,0,A,1,1,1,1,1,,N1,,,,,5000,S,8000,,SEALED,)

restraint: none

LEFT  RIGHT

Connection Table		
A	HEEL_HS	SC-HEEL-HS-F-90-75-1
B	APEX_HS	SC-APEX-HS-F-90-75-1

ANALYSIS		QTY
Status	PASS	1
Approved BY		

Chord - Web Connections

040-3

Part Id  
Total no. fasteners at each end of the web

Connection type: (Apex,knee,heel,elbow,chordpt)

SC-HEEL-A-75-10-6

Truss system: ENDUROTRUSS (c)  
C profile

Channel depth: Depth of channel -section in mm

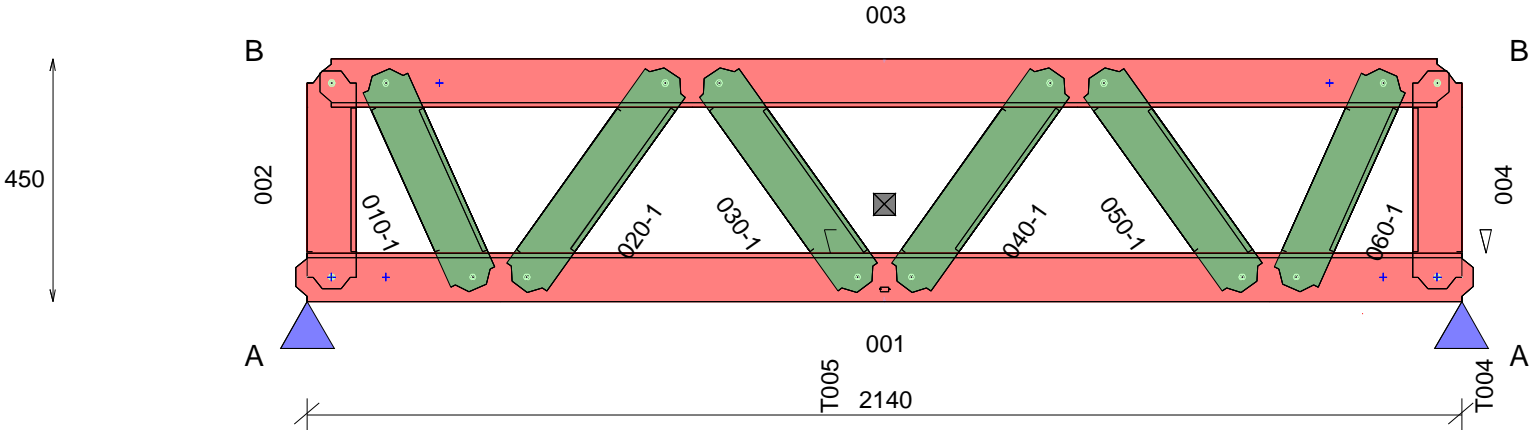
Channel depth: 75

Connection variant: (A is heel with no stiffener)

Channel gauge: (75 = 0.75 mm BMT  
10 = 1.0 mm BMT)  
etc

Fastener number: Total number of fasteners used in the connection including locating truss screw and reinforcing screws

10



QUALITY CHECK: Top of TOP CHORD to Bottom of BOTTOM CHORD: 450

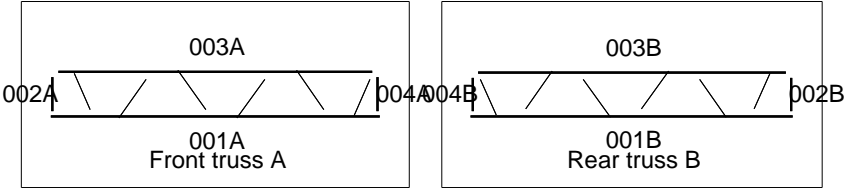
Chords and webs placed flange-DOWN.

Min screws per conn: 1 ( Screw locations diagrammatic only. Refer connection sheet for details.)

Double Girder-truss

All parts in the front truss (A) are numbered 001A, 002A etc

All parts in the rear truss (B) are numbered 001B, 002B etc

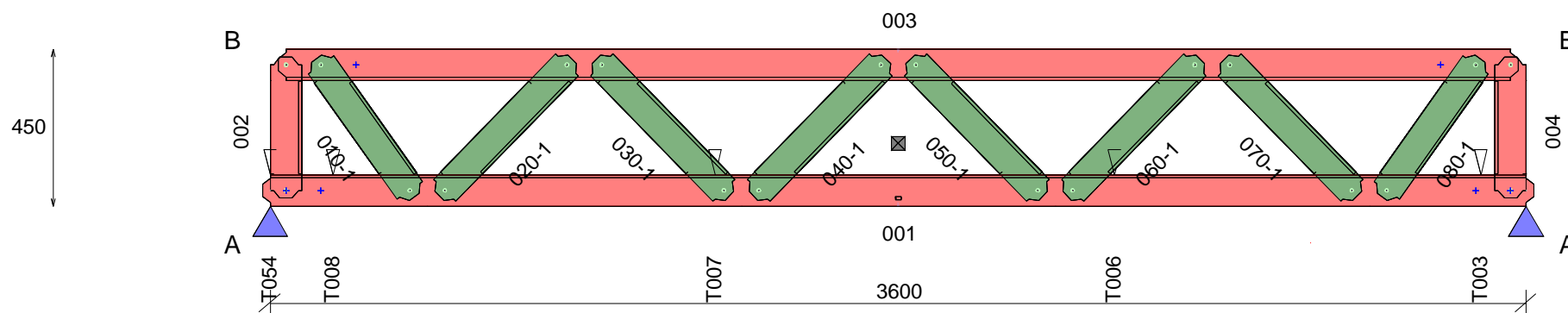
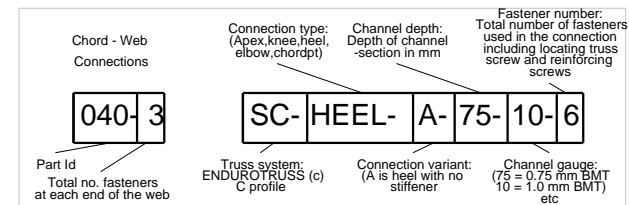


PARTS LIST (per truss)										ASSEMBLY DETAILS			TRUSS DETAILS			
DESCRIPTION	No.	LEN	MAT	QTY	DESCRIPTION	No.	LEN	MAT	QTY	APEX HEIGHT	LEFT PITCH	RIGHT PITCH	UNCROPPED LENGTH	UNCROPPED HEIGHT	WEIGHT	
C9075ra	001A	2184	0.75	1	C9075ra	020B	486.1	0.75	1	N/A	-	-	2184	450	17.4	
C9075ra	001B	2184	0.75	1	C9075ra	030A	486.1	0.75	1				Precamber = 0.0 mm	DETAILER	DETAILED	SCALE
C9075ra	002A	404	0.75	1	C9075ra	030B	486.1	0.75	1	VANTAGE_DS	21-10-2019	1:15				
C9075ra	002B	404	0.75	1	C9075ra	040A	486.1	0.75	1	JOB NUMBER		TRUSS				
C9075ra	003A	2094	0.75	1	C9075ra	040B	486.1	0.75	1	TSF_4413		T051				
C9075ra	003B	2094	0.75	1	C9075ra	050A	486.1	0.75	1	FABRICATOR:	TRUE STEEL FRAMES			Machine Type		ENDUROTRUSS
C9075ra	004A	404	0.75	1	C9075ra	050B	486.1	0.75	1	CLIENT REF:	4 REDWOOD ST, ROSTREVOR					
C9075ra	004B	404	0.75	1	C9075ra	060A	438.6	0.75	1	CUSTOMER :	BERT FARINA CONSTRUCTION			Page 1 of 1		
C9075ra	010A	438.6	0.75	1	C9075ra	060B	438.6	0.75	1							
C9075ra	010B	438.6	0.75	1	TRUSSTITE				16							
C9075ra	020A	486.1	0.75	1												

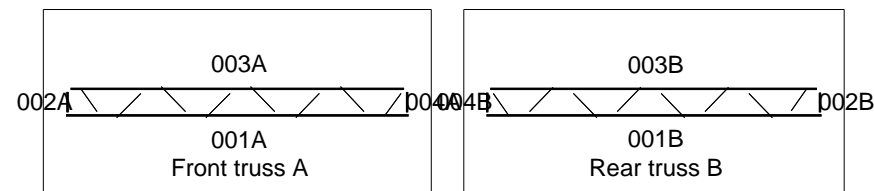
LEFT  RIGHT

ANALYSIS		QTY
Status	PASS	1
Approved BY		

Connection Table		
A	HEEL_HS	SC-HEEL-HS-F-90-75-1
B	APEX_HS	SC-APEX-HS-F-90-75-1



All parts in the rear truss (B) are numbered 001B, 002B etc



PARTS LIST (per truss)										ASSEMBLY DETAILS			TRUSS DETAILS		
DESCRIPTION	No.	LEN	MAT	QTY	DESCRIPTION	No.	LEN	MAT	QTY	APEX HEIGHT	LEFT PITCH	RIGHT PITCH	UNCROPPED LENGTH	UNCROPPED HEIGHT	WEIGHT
C9075ra	001A	3644	0.75	1	C9075ra	020A	546.1	0.75	1	N/A	-	-	3644	450	26.8
C9075ra	001B	3644	0.75	1	C9075ra	020B	546.1	0.75	1				Precamber = 0.0 mm	DETAILER	DETAILED
C9075ra	002A	404	0.75	1	C9075ra	030A	546.1	0.75	1	VANTAGE_DS	21-10-2019	1:20			
C9075ra	002B	404	0.75	1	C9075ra	030B	546.1	0.75	1	JOB NUMBER	TRUSS				
C9075ra	003A	3554	0.75	1	C9075ra	040A	546.1	0.75	1	FABRICATOR:	TRUE STEEL FRAMES	TSF_4413		T052	
C9075ra	003B	3554	0.75	1	C9075ra	040B	546.1	0.75	1	CLIENT REF:	4 REDWOOD ST, ROSTREVOR	Machine Type			ENDUROTRUSS
C9075ra	004A	404	0.75	1	C9075ra	050A	546.1	0.75	1	CUSTOMER :	BERT FARINA CONSTRUCTION				
C9075ra	004B	404	0.75	1	C9075ra	050B	546.1	0.75	1	Page 1 of 2					
C9075ra	010A	485.2	0.75	1	C9075ra	060A	546.1	0.75	1						
C9075ra	010B	485.2	0.75	1	C9075ra	060B	546.1	0.75	1						
Continued on page 2															

DESCRIPTION	No.	LEN	MAT	QTY
C9075ra	070A	546.1	0.75	1
C9075ra	070B	546.1	0.75	1
C9075ra	080A	485.2	0.75	1
C9075ra	080B	485.2	0.75	1
TRUSSTITE				20

Loading: USER-W34N(m,6,-0.2,-0.13,-0.25,0,0,0,0,0,0,-1.1,-1.1,0,1200,0,0,0,0,0,600,0,0,A,1,1,1,1,1,,N1,,,,,5000,S,8000,,SEALED,)

smart: YES flush: YES  
restraint: none

LEFT ← → RIGHT

Connection Table		
A	HEEL_HS	SC-HEEL-HS-F-90-75-1
B	APEX_HS	SC-APEX-HS-F-90-75-1

ANALYSIS		QTY
Status	PASS	1
Approved BY		

Chord - Web Connections

040-3

Part Id  
Total no. fasteners at each end of the web

Connection type: (Apex,knee,heel,elbow,chorcpt)

SC-HEEL-A-75-10-6

Truss system: ENDUROTRUSS (c)  
C profile

Channel depth: Depth of channel -section in mm

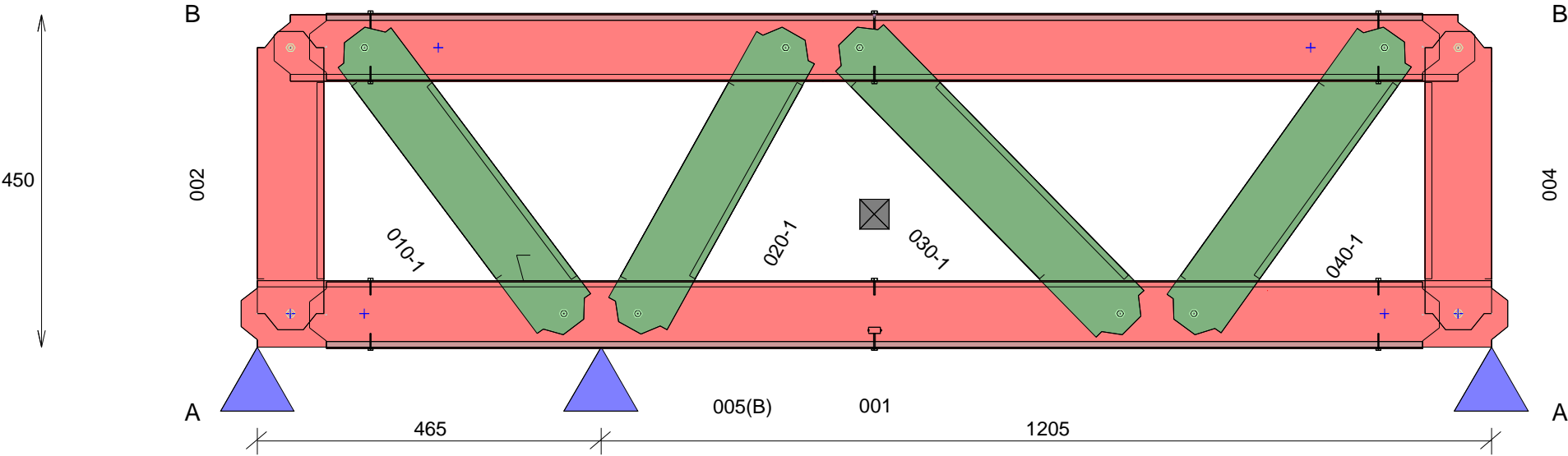
A-75

Connection variant: (A is heel with no stiffener)

Fastener number: Total number of fasteners used in the connection including locating truss screw and reinforcing screws

10-6

Channel gauge: (75 = 0.75 mm BMT  
10 = 1.0 mm BMT) etc



QUALITY CHECK: Top of TOP CHORD to Bottom of BOTTOM CHORD: 450  
Chords and webs placed flange-DOWN.  
Min screws per conn: 1 ( Screw locations diagrammatic only. Refer connection sheet for details.)

PARTS LIST (per truss)										ASSEMBLY DETAILS			TRUSS DETAILS				
DESCRIPTION	No.	LEN	MAT	QTY	DESCRIPTION	No.	LEN	MAT	QTY	APEX HEIGHT	LEFT PITCH	RIGHT PITCH	UNCROPPED LENGTH	UNCROPPED HEIGHT	WEIGHT		
C9075ra	001	1714	0.75	1	SCREW-10-16x16-HEX				12	N/A	-	-	1714	459	10		
C9075ra	002	404	0.75	1									DETAILER	DETAILED	SCALE		
C9075ra	003	1624	0.75	1									VANTAGE_DS	21-10-2019	1:9		
C9075ra	004	404	0.75	1									JOB NUMBER		TRUSS		
C9075ra	005	1528	0.75	1						FABRICATOR:			TRUE STEEL FRAMES		TSF_4413		T053
C9075ra	006	1528	0.75	1						CLIENT REF:			4 REDWOOD ST, ROSTREVOR		Machine Type		
C9075ra	010	493.9	0.75	1						CUSTOMER :			BERT FARINA CONSTRUCTION				
C9075ra	020	455.8	0.75	1													
C9075ra	030	547.9	0.75	1													
C9075ra	040	486.7	0.75	1													
TRUSSTITE				12													

Page 1 of 1

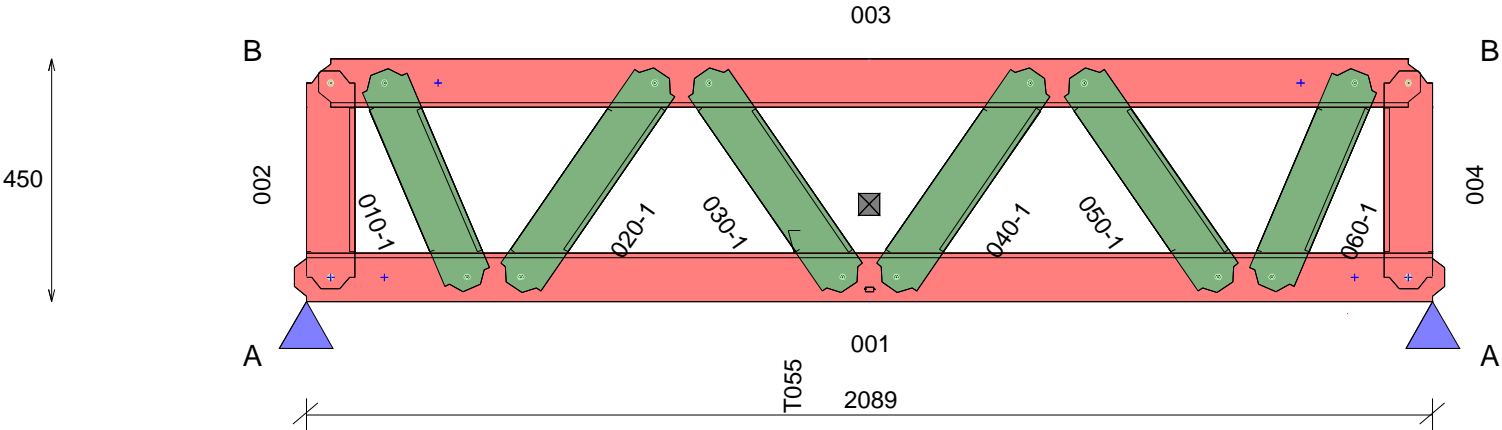
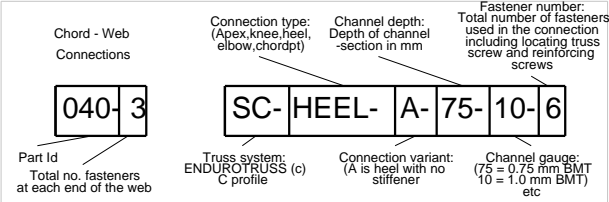
Loading: USER-W34N(m,6,-0.2,-0.13,-0.25,0,0,0,0,0,0,-1.1,-1.1,0,1200,0,0,0,0,0,600,0,0,A,1,1,1,1,1,,N1,,,,,5000,S,8000,,SEALED,)

smart: YES flush: YES  
restraint: none

LEFT ← → RIGHT

Connection Table		
A	HEEL_HS	SC-HEEL-HS-F-90-75-1
B	APEX_HS	SC-APEX-HS-F-90-75-1

ANALYSIS		QTY
Status	PASS	1
Approved BY		



QUALITY CHECK: Top of TOP CHORD to Bottom of BOTTOM CHORD: 450

Chords and webs placed flange-DOWN.

Min screws per conn: 1 ( Screw locations diagrammatic only. Refer connection sheet for details.)  
Single Girder-truss

PARTS LIST (per truss)					ASSEMBLY DETAILS			TRUSS DETAILS		
DESCRIPTION	No.	LEN	MAT	QTY	APEX HEIGHT	LEFT PITCH	RIGHT PITCH	UNCROPPED LENGTH	UNCROPPED HEIGHT	WEIGHT
C9075ra	001	2132.8	0.75	1	N/A	-	-	2133	450	8.5
C9075ra	002	404	0.75	1				Precamber = 0.0 mm	DETAILER	DETAILED
C9075ra	003	2042.8	0.75	1	VANTAGE_DS	21-10-2019	1:15			
C9075ra	004	404	0.75	1	JOB NUMBER		TRUSS			
C9075ra	010	435.2	0.75	1	TSF_4413		T054			
C9075ra	020	481.2	0.75	1	FABRICATOR:		TRUE STEEL FRAMES			
C9075ra	030	481.2	0.75	1	CLIENT REF:		4 REDWOOD ST, ROSTREVOR		Machine Type	ENDUROTRUSS
C9075ra	040	481.2	0.75	1	CUSTOMER :		BERT FARINA CONSTRUCTION		Page 1 of 1	
C9075ra	050	481.2	0.75	1						
C9075ra	060	435.2	0.75	1						
TRUSSTITE				16						

smart: YES flush: YES  
restraint: none

LEFT ← → RIGHT

ANALYSIS

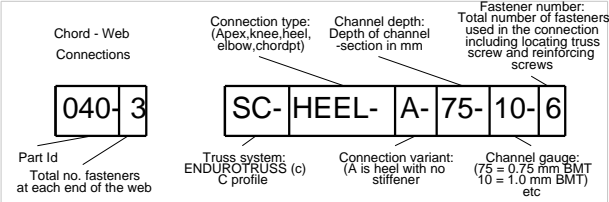
QTY

Status

PASS

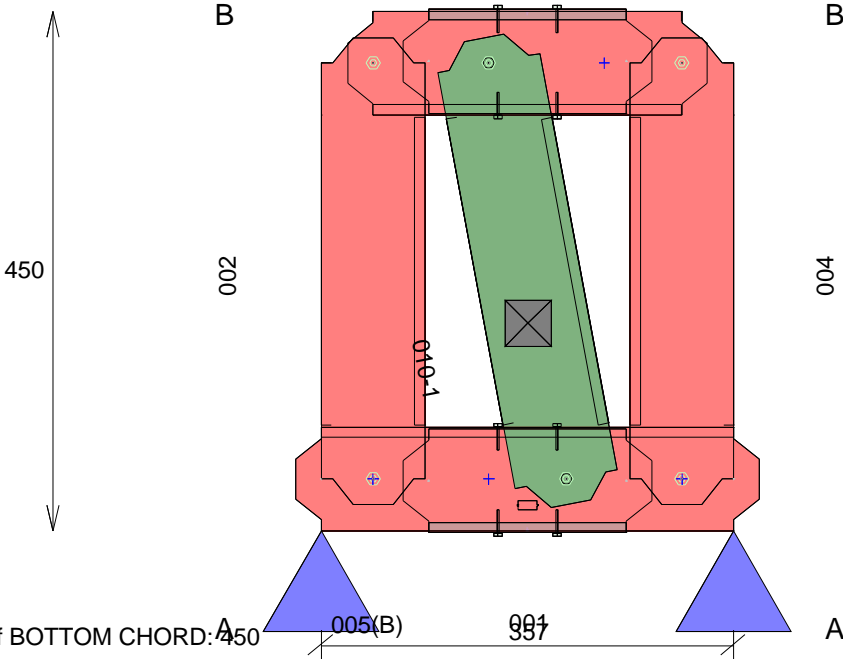
Approved BY

1



Connection Table

A	HEEL_HS	SC-HEEL-HS-F-90-75-1
B	APEX_HS	SC-APEX-HS-F-90-75-1



QUALITY CHECK: Top of TOP CHORD to Bottom of BOTTOM CHORD: 450

Chords and webs placed flange-DOWN.

Min screws per conn: 1 ( Screw locations diagrammatic only. Refer connection sheet for details.)

PARTS LIST (per truss)

ASSEMBLY DETAILS

TRUSS DETAILS

DESCRIPTION	No.	LEN	MAT	QTY
C9075ra	001	401.1	0.75	1
C9075ra	002	404	0.75	1
C9075ra	003	311.1	0.75	1
C9075ra	004	404	0.75	1
C9075ra	005	215.1	0.75	1
C9075ra	006	215.1	0.75	1
C9075ra	010	410.2	0.75	1
TRUSSTITE				6
SCREW-10-16x16-HEX				8

APEX HEIGHT	LEFT PITCH	RIGHT PITCH
N/A	-	-
Precamber = 0.0 mm		
FABRICATOR:	TRUE STEEL FRAMES	
CLIENT REF:	4 REDWOOD ST, ROSTREVOR	
CUSTOMER :	BERT FARINA CONSTRUCTION	

UNCROPPED LENGTH	UNCROPPED HEIGHT	WEIGHT
401	459	2.6
DETAILER	DETAILED	SCALE
VANTAGE_DS	21-10-2019	1:7
JOB NUMBER		TRUSS
TSF_4413		T055
Machine Type		ENDUROTRUSS

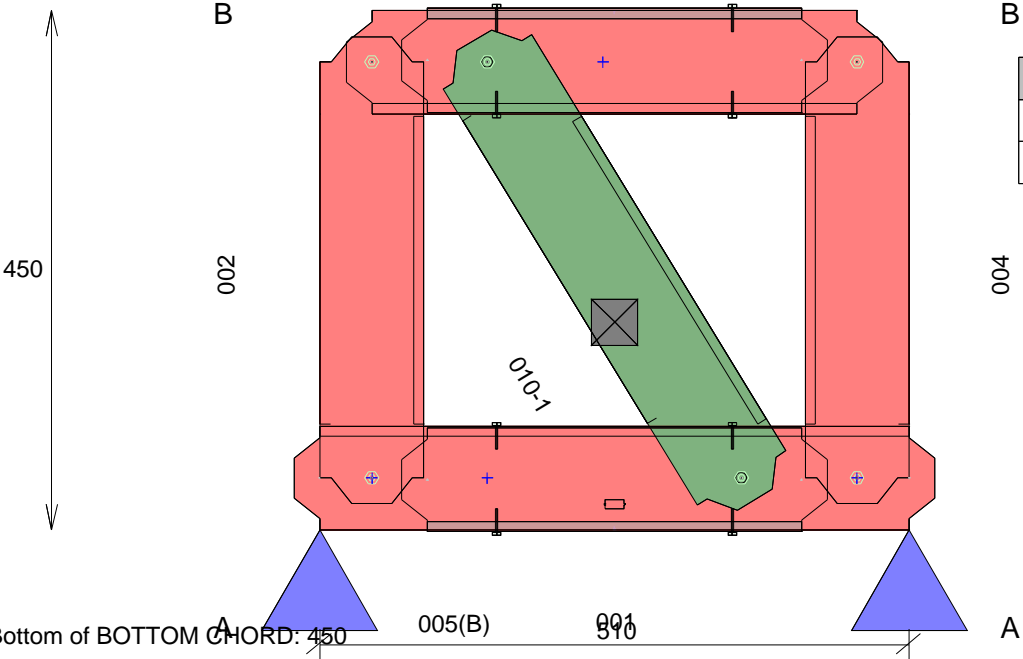
smart: YES flush: YES  
restraint: none

LEFT ← → RIGHT

ANALYSIS		QTY
Status	PASS	1
Approved BY		

Chord - Web Connections	Connection type: (Apex,knee,heel,elbow,chordpt)	Channel depth: Depth of channel -section in mm	Fastener number: Total number of fasteners used in the connection including locating truss screw and reinforcing screws
040-3	SC-HEEL-A-75-10-6		
Part Id Total no. fasteners at each end of the web	Truss system: ENDUROTRUSS (c) C profile	Connection variant: (A is heel with no stiffener)	Channel gauge: (75 = 0.75 mm BMT 10 = 1.0 mm BMT) etc

Connection Table		
A	HEEL_HS	SC-HEEL-HS-F-90-75-1
B	APEX_HS	SC-APEX-HS-F-90-75-1



QUALITY CHECK: Top of TOP CHORD to Bottom of BOTTOM CHORD: 450

Chords and webs placed flange-DOWN.

Min screws per conn: 1 ( Screw locations diagrammatic only. Refer connection sheet for details.)

PARTS LIST (per truss)					ASSEMBLY DETAILS			TRUSS DETAILS			
DESCRIPTION	No.	LEN	MAT	QTY	APEX HEIGHT	LEFT PITCH	RIGHT PITCH	UNCROPPED LENGTH	UNCROPPED HEIGHT	WEIGHT	
C9075ra	001	553.9	0.75	1	N/A	-	-	554	459	3.3	
C9075ra	002	404	0.75	1							
C9075ra	003	463.9	0.75	1	Precamber = 0.0 mm			DETAILER	DETAILED	SCALE	
C9075ra	004	404	0.75	1				VANTAGE_DS	21-10-2019	1:7	
C9075ra	005	367.9	0.75	1				JOB NUMBER		TRUSS	
C9075ra	006	367.9	0.75	1				TSF_4413		T056	
C9075ra	010	465.8	0.75	1	FABRICATOR:	TRUE STEEL FRAMES					
TRUSSTITE				6	CLIENT REF:	4 REDWOOD ST, ROSTREVOR		Machine Type		ENDUROTRUSS	
SCREW-10-16x16-HEX				8	CUSTOMER :	BERT FARINA CONSTRUCTION					
					Page 1 of 1						

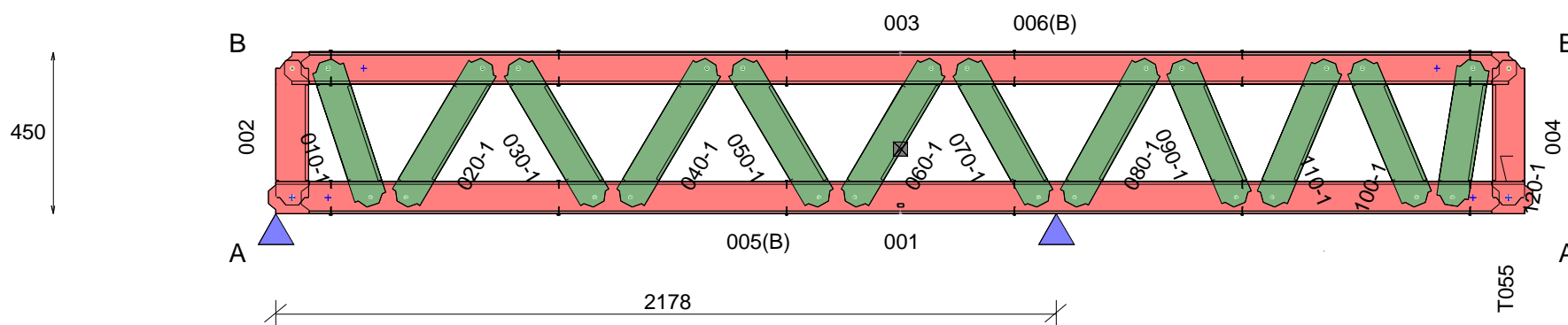
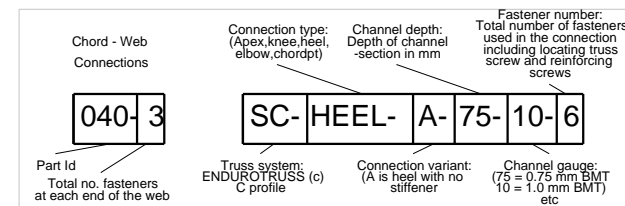


smart: YES    flush: YES  
restraint: none

LEFT  RIGHT

ANALYSIS		QTY
Status	PASS	1
Approved BY		

Connection Table		
A	HEEL_HS	SC-HEEL-HS-F-90-10-1
B	APEX HS	SC-APEX-HS-F-90-10-1



Min screws per conn: 1 (Screw locations diagrammatic only. Refer connection sheet for details.)  
Single Girder-truss

PARTS LIST (per truss)										ASSEMBLY DETAILS			TRUSS DETAILS			
DESCRIPTION	No.	LEN	MAT	QTY	DESCRIPTION	No.	LEN	MAT	QTY	APEX HEIGHT	LEFT PITCH	RIGHT PITCH	UNCROPPED LENGTH	UNCROPPED HEIGHT	WEIGHT	
C9010ra	001	3529	1.00	1	C9010ra	040	462.3	1.00	1	N/A	-	-	3529	459	28.6	
C9010ra	002	404	1.00	1	C9010ra	050	462.3	1.00	1							
C9010ra	003	3439	1.00	1	C9010ra	060	462.3	1.00	1	Precamber = 0.0 mm			DETAILER	DETAILED	SCALE	
C9010ra	004	404	1.00	1	C9010ra	070	455.8	1.00	1				VANTAGE_DS	21-10-2019	1:20	
C9010ra	005	3343	1.00	1	C9010ra	080	455.8	1.00	1				JOB NUMBER		TRUSS	
C9010ra	006	3343	1.00	1	C9010ra	090	434.7	1.00	1				TSF_4413		T057	
C9010ra	010	422.9	1.00	1	C9010ra	100	434.7	1.00	1	FABRICATOR:	TRUE STEEL FRAMES		Machine Type      ENDUROTRUSS			
C9010ra	110	434.7	1.00	1	TRUSSTITE				28	CLIENT REF:	4 REDWOOD ST, ROSTREVOR					
C9010ra	020	462.3	1.00	1	SCREW-10-16x16-HEX				24	CUSTOMER :	BERT FARINA CONSTRUCTION					
C9010ra	120	408.4	1.00	1												
C9010ra	030	462.3	1.00	1												

Page 1 of 1

Loading: USER-W34N(m,6,-0.2,-0.13,-0.25,0,0,0,0,0,0,-1.1,-1.1,0,1200,0,0,0,0,0,600,0,0,A,1,1,1,1,1,,N1,,,,,5000,S,8000,,SEALED,)

smart: YES flush: YES  
restraint: none

LEFT ← → RIGHT

Connection Table		
A	HEEL_HS	SC-HEEL-HS-F-90-75-1
B	HEEL_HS	SC-HEEL-HS-F-90-75-3
C	APEX_HS	SC-APEX-HS-F-90-75-3
D	APEX_HS	SC-APEX-HS-F-90-75-1

ANALYSIS		QTY
Status	PASS	1
Approved BY		

Chord - Web Connections

040-3

Part Id  
Total no. fasteners at each end of the web

Connection type:  
(Apex,knee,heel,elbow,chordpt)

SC-HEEL-A-75-10-6

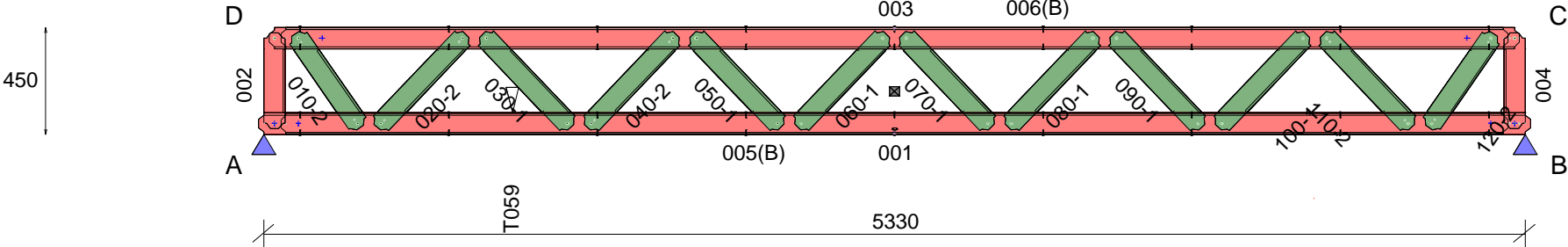
Truss system:  
ENDUROTRUSS (c)  
C profile

Channel depth:  
Depth of channel -section in mm

Channel gauge:  
(75 = 0.75 mm BMT  
10 = 1.0 mm BMT)  
etc

Connection variant:  
(A is heel with no stiffener)

Fastener number:  
Total number of fasteners used in the connection including locating truss screw and reinforcing screws



QUALITY CHECK: Top of TOP CHORD to Bottom of BOTTOM CHORD: 449

Chords and webs placed flange-DOWN.

Min screws per conn: 1 ( Screw locations diagrammatic only. Refer connection sheet for details.)  
Single Girder-truss

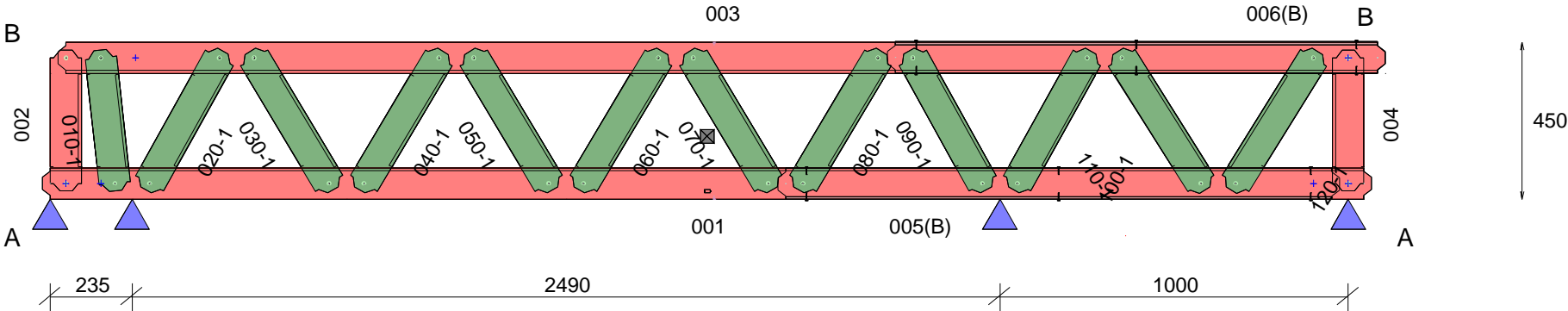
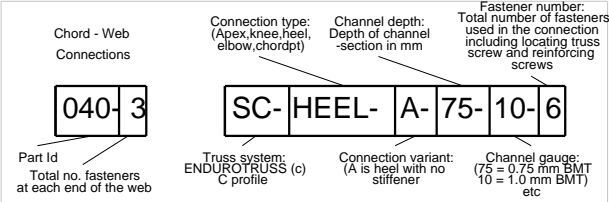
PARTS LIST (per truss)										ASSEMBLY DETAILS			TRUSS DETAILS			
DESCRIPTION	No.	LEN	MAT	QTY	DESCRIPTION	No.	LEN	MAT	QTY	APEX HEIGHT	LEFT PITCH	RIGHT PITCH	UNCROPPED LENGTH	UNCROPPED HEIGHT	WEIGHT	
C9075ra	001	5374	0.75	1	C9075ra	040	541.6	0.75	1	N/A	-	-	5374	459	30.7	
C9075ra	002	404	0.75	1	C9075ra	050	541.4	0.75	1				Precamber = 1.0 mm	DETAILER	DETAILED	SCALE
C9075ra	003	5284	0.75	1	C9075ra	060	541.4	0.75	1	VANTAGE_DS	21-10-2019	1:30				
C9075ra	004	404	0.75	1	C9075ra	070	541.4	0.75	1	JOB NUMBER		TRUSS				
C9075ra	005	5188	0.75	1	C9075ra	080	541.4	0.75	1	TSF_4413		T058				
C9075ra	006	5188	0.75	1	C9075ra	090	541.6	0.75	1	FABRICATOR:	TRUE STEEL FRAMES			Machine Type		ENDUROTRUSS
C9075ra	010	481.6	0.75	1	C9075ra	100	541.6	0.75	1	CLIENT REF:	4 REDWOOD ST, ROSTREVOR					
C9075ra	110	541.9	0.75	1	TRUSSTITE				28	CUSTOMER :	BERT FARINA CONSTRUCTION		Page 1 of 1			
C9075ra	020	541.9	0.75	1	SCREW-10-16x16-HEX				36							
C9075ra	120	481.6	0.75	1	SCREW-12-14x20-HEX				14							
C9075ra	030	541.6	0.75	1												

smart: YES flush: YES  
restraint: none

LEFT ← → RIGHT

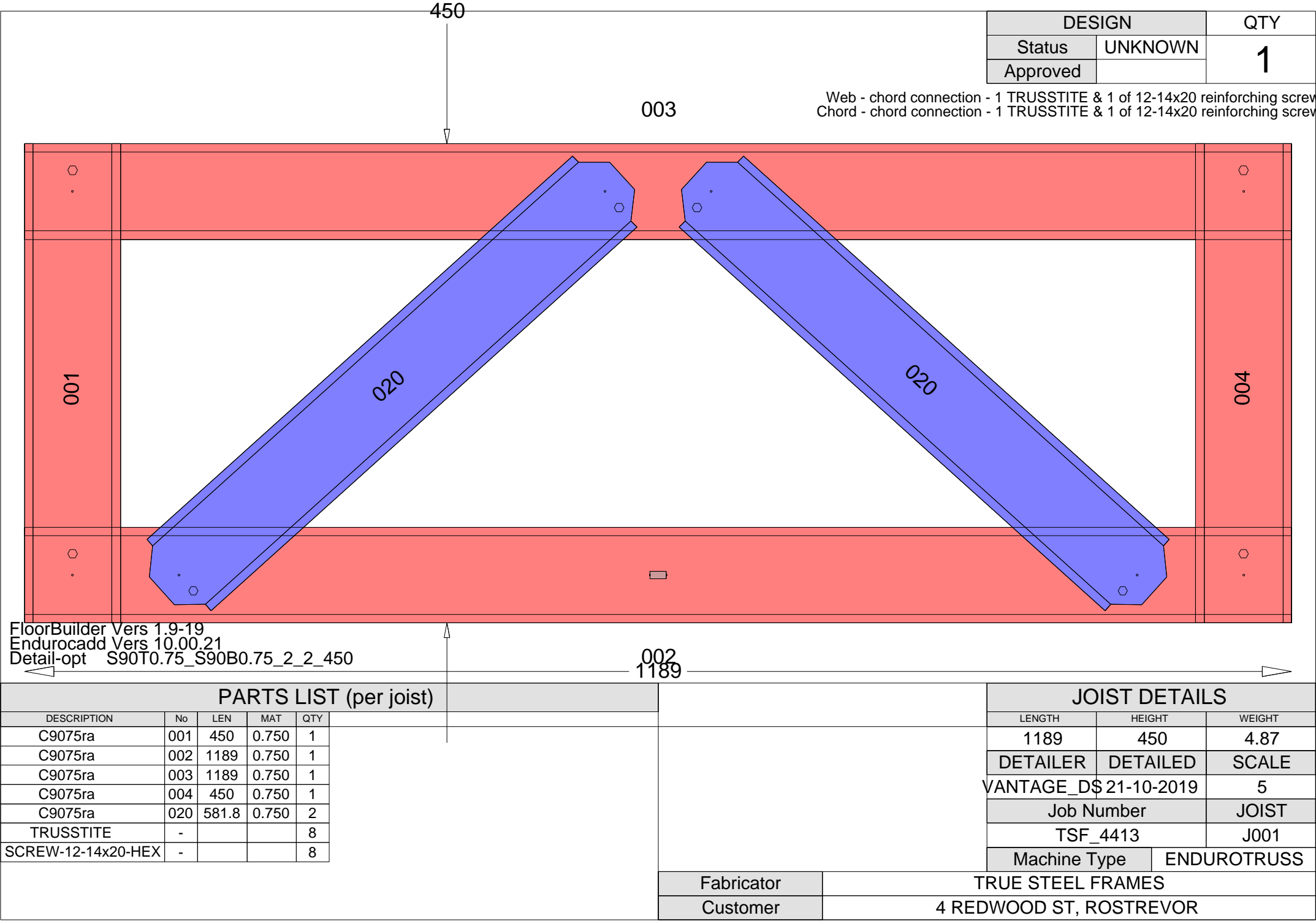
Connection Table		
A	HEEL_HS	SC-HEEL-HS-F-90-75-1
B	APEX_HS	SC-APEX-HS-F-90-75-1

ANALYSIS		QTY
Status	PASS	1
Approved BY		



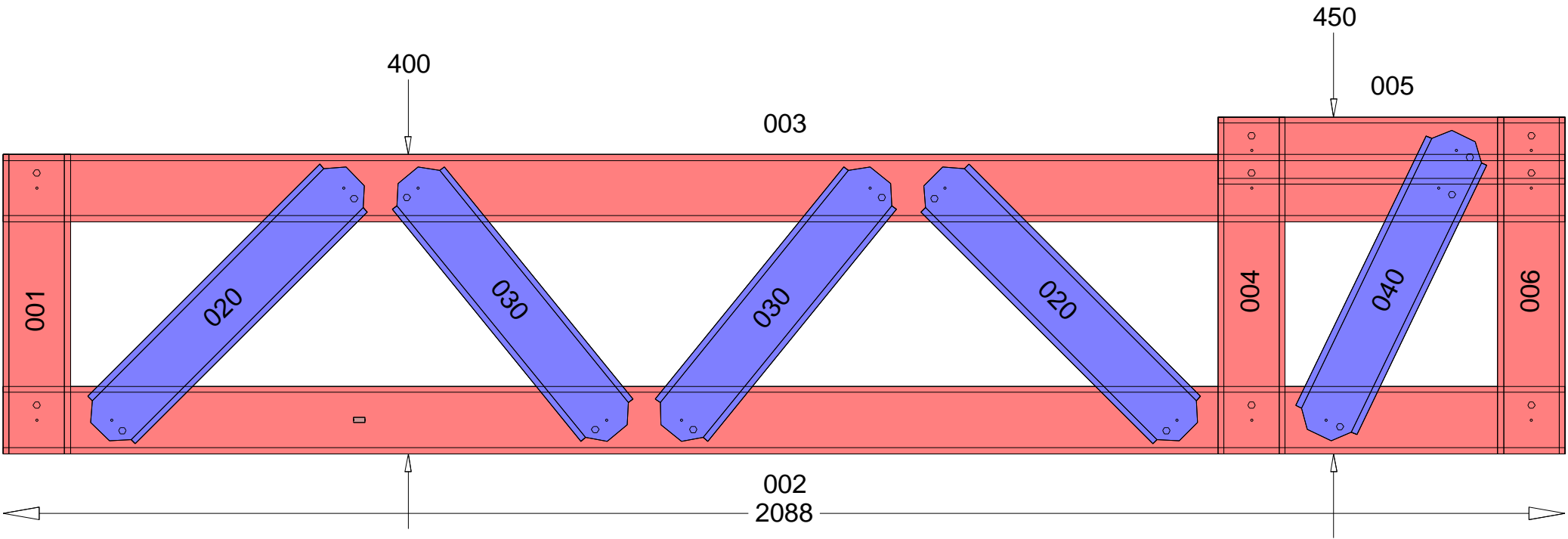
QUALITY CHECK: Top of TOP CHORD to Bottom of BOTTOM CHORD: 450  
Chords and webs placed flange-DOWN.  
Min screws per conn: 1 ( Screw locations diagrammatic only. Refer connection sheet for details.)

PARTS LIST (per truss)										ASSEMBLY DETAILS			TRUSS DETAILS			
DESCRIPTION	No.	LEN	MAT	QTY	DESCRIPTION	No.	LEN	MAT	QTY	APEX HEIGHT	LEFT PITCH	RIGHT PITCH	UNCROPPED LENGTH	UNCROPPED HEIGHT	WEIGHT	
C9075ra	001	3814	0.75	1	C9075ra	040	463.3	0.75	1	N/A	-	-	3852	459	18.6	
C9075ra	002	404	0.75	1	C9075ra	050	463.3	0.75	1				Precamber = 0.0 mm	DETAILER	DETAILED	SCALE
C9075ra	003	3807	0.75	1	C9075ra	060	463.3	0.75	1	VANTAGE_DS	21-10-2019	1:20				
C9075ra	004	404	0.75	1	C9075ra	070	463.3	0.75	1	JOB NUMBER		TRUSS				
C9075ra	005	1610.9	0.75	1	C9075ra	080	463.3	0.75	1	TSF_4413		T059				
C9075ra	006	1427	0.75	1	C9075ra	090	455.8	0.75	1	FABRICATOR:	TRUE STEEL FRAMES			Machine Type		ENDUROTRUSS
C9075ra	010	406.2	0.75	1	C9075ra	100	455.8	0.75	1	CLIENT REF:	4 REDWOOD ST, ROSTREVOR					
C9075ra	011	469.4	0.75	1	TRUSSTITE				28	CUSTOMER :	BERT FARINA CONSTRUCTION			Page 1 of 1		
C9075ra	020	455.8	0.75	1	SCREW-10-16x16-HEX				12							
C9075ra	120	467.6	0.75	1												
C9075ra	030	463.3	0.75	1												



DESIGN		QTY
Status	UNKNOWN	1
Approved		

Web - chord connection - 1 TRUSSTITE & 1 of 12-14x20 reinforcing screw.  
Chord - chord connection - 1 TRUSSTITE & 1 of 12-14x20 reinforcing screw.

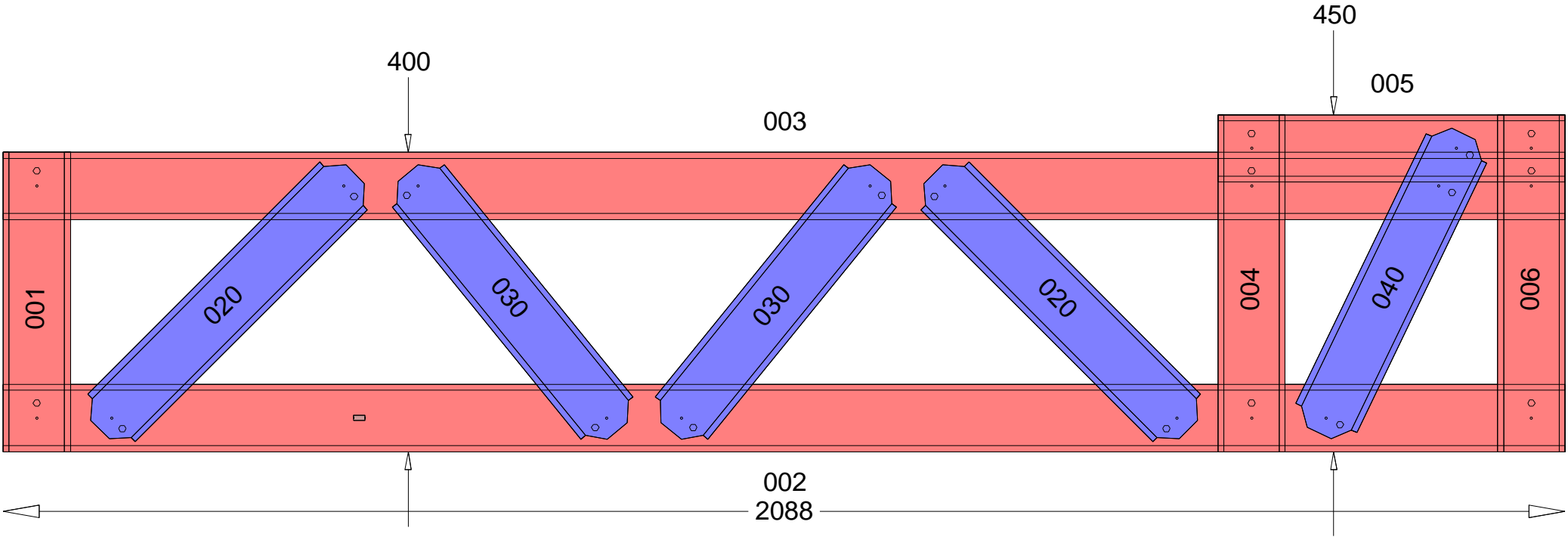


FloorBuilder Vers 1.9-19  
Endurocadd Vers 10.00.21  
Detail-opt S90T0.75\_S90B0.75\_2\_2\_450

PARTS LIST (per joist)										JOIST DETAILS		
DESCRIPTION	No	LEN	MAT	QTY	DESCRIPTION	No	LEN	MAT	QTY	LENGTH	HEIGHT	WEIGHT
C9075ra	001	400	0.750	1	SCREW-12-14x20-HEX	-			19	2088	450	9.07
C9075ra	002	2088	0.750	1						DETAILER	DETAILED	SCALE
C9075ra	003	2088	0.750	1						VANTAGE_DS\$ 21-10-2019		8
C9075ra	004	450	0.750	1						Job Number		JOIST
C9075ra	005	464	0.750	1						TSF_4413		J002
C9075ra	006	450	0.750	1						Machine Type		ENDUROTRUSS
C9075ra	020	482.4	0.750	2						Fabricator		
C9075ra	030	443.5	0.750	2						TRUE STEEL FRAMES		
C9075ra	040	443.8	0.750	1						Customer		
TRUSSTITE	-			19						4 REDWOOD ST, ROSTREVOR		

DESIGN		QTY
Status	UNKNOWN	1
Approved		

Web - chord connection - 1 TRUSSTITE & 1 of 12-14x20 reinforcing screw.  
Chord - chord connection - 1 TRUSSTITE & 1 of 12-14x20 reinforcing screw.

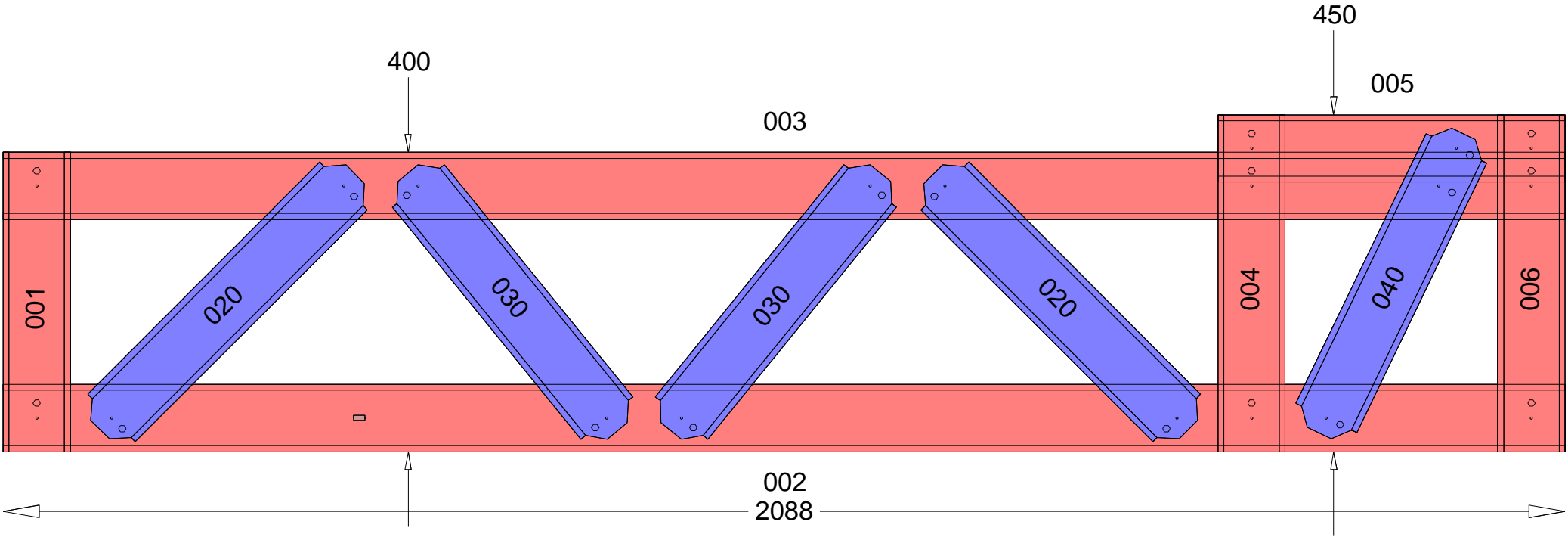


FloorBuilder Vers 1.9-19  
Endurocadd Vers 10.00.21  
Detail-opt S90T0.75\_S90B0.75\_2\_2\_450

PARTS LIST (per joist)										JOIST DETAILS		
DESCRIPTION	No	LEN	MAT	QTY	DESCRIPTION	No	LEN	MAT	QTY	LENGTH	HEIGHT	WEIGHT
C9075ra	001	400	0.750	1	SCREW-12-14x20-HEX	-			19	2088	450	9.07
C9075ra	002	2088	0.750	1						DETAILER	DETAILED	SCALE
C9075ra	003	2088	0.750	1						VANTAGE_DS\$ 21-10-2019		8
C9075ra	004	450	0.750	1						Job Number		JOIST
C9075ra	005	464	0.750	1						TSF_4413		J003
C9075ra	006	450	0.750	1						Machine Type		ENDUROTRUSS
C9075ra	020	482.4	0.750	2						Fabricator		
C9075ra	030	443.5	0.750	2						TRUE STEEL FRAMES		
C9075ra	040	443.8	0.750	1						Customer		
TRUSSTITE	-			19						4 REDWOOD ST, ROSTREVOR		

DESIGN		QTY
Status	UNKNOWN	1
Approved		

Web - chord connection - 1 TRUSSTITE & 1 of 12-14x20 reinforcing screw.  
Chord - chord connection - 1 TRUSSTITE & 1 of 12-14x20 reinforcing screw.

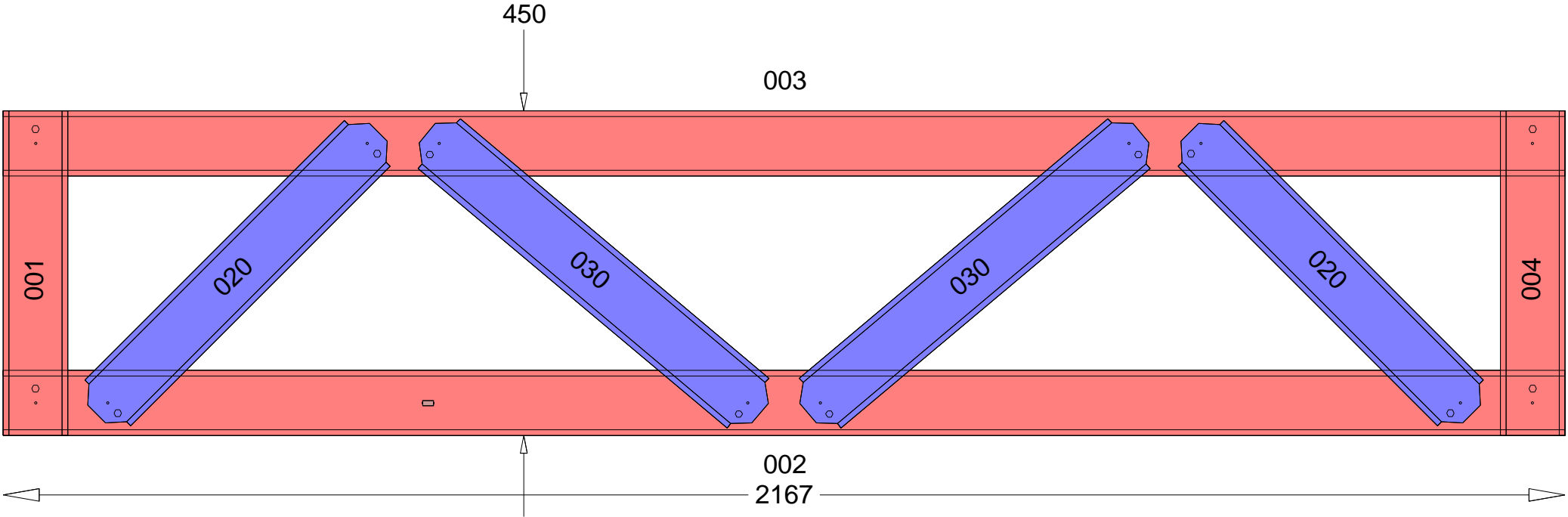


FloorBuilder Vers 1.9-19  
Endurocadd Vers 10.00.21  
Detail-opt S90T0.75\_S90B0.75\_2\_2\_450

PARTS LIST (per joist)										JOIST DETAILS		
DESCRIPTION	No	LEN	MAT	QTY	DESCRIPTION	No	LEN	MAT	QTY	LENGTH	HEIGHT	WEIGHT
C9075ra	001	400	0.750	1	SCREW-12-14x20-HEX	-			19	2088	450	9.07
C9075ra	002	2088	0.750	1						DETAILER	DETAILED	SCALE
C9075ra	003	2088	0.750	1						VANTAGE_DS\$ 21-10-2019		8
C9075ra	004	450	0.750	1						Job Number		JOIST
C9075ra	005	464	0.750	1						TSF_4413		J004
C9075ra	006	450	0.750	1						Machine Type		ENDUROTRUSS
C9075ra	020	482.4	0.750	2						Fabricator		
C9075ra	030	443.5	0.750	2						TRUE STEEL FRAMES		
C9075ra	040	443.8	0.750	1						Customer		
TRUSSTITE	-			19						4 REDWOOD ST, ROSTREVOR		

DESIGN		QTY
Status	UNKNOWN	1
Approved		

Web - chord connection - 1 TRUSSTITE & 1 of 12-14x20 reinforcing screw.  
Chord - chord connection - 1 TRUSSTITE & 1 of 12-14x20 reinforcing screw.



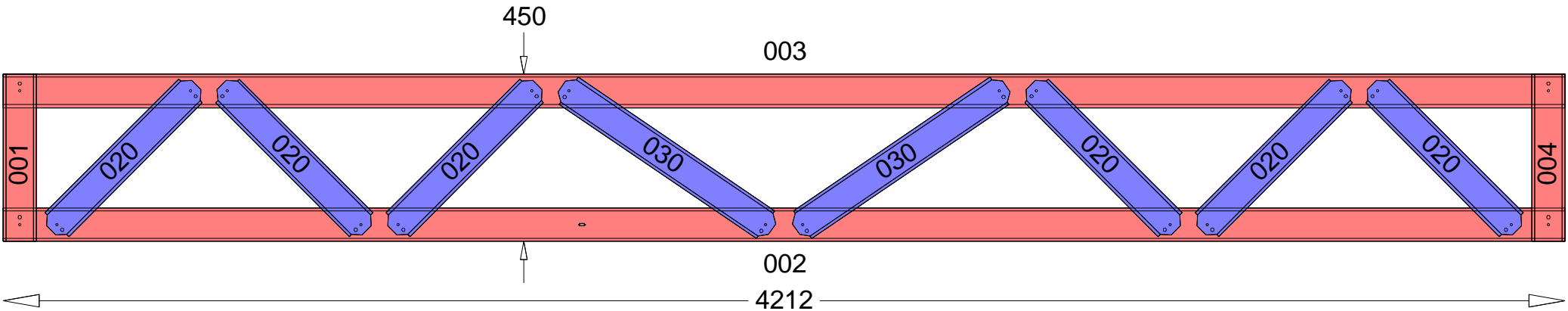
FloorBuilder Vers 1.9-19  
Endurocadd Vers 10.00.21  
Detail-opt S90T0.75\_S90B0.75\_2\_2\_450

PARTS LIST (per joist)					JOIST DETAILS		
DESCRIPTION	No	LEN	MAT	QTY	LENGTH	HEIGHT	WEIGHT
C9075ra	001	450	0.750	1	2167	450	8.26
C9075ra	002	2167	0.750	1	DETAILER	DETAILED	SCALE
C9075ra	003	2167	0.750	1	VANTAGE_DS\$ 21-10-2019		8
C9075ra	004	450	0.750	1	Job Number		JOIST
C9075ra	020	553.1	0.750	2	TSF_4413		J005
C9075ra	030	603.7	0.750	2	Machine Type		ENDUROTRUSS
TRUSSTITE	-			12	Fabricator		
SCREW-12-14x20-HEX	-			12	TRUE STEEL FRAMES		
					Customer		
					4 REDWOOD ST, ROSTREVOR		



DESIGN		QTY
Status	UNKNOWN	1
Approved		

Web - chord connection - 1 TRUSSTITE & 1 of 12-14x20 reinforcing screw.  
Chord - chord connection - 1 TRUSSTITE & 1 of 12-14x20 reinforcing screw.

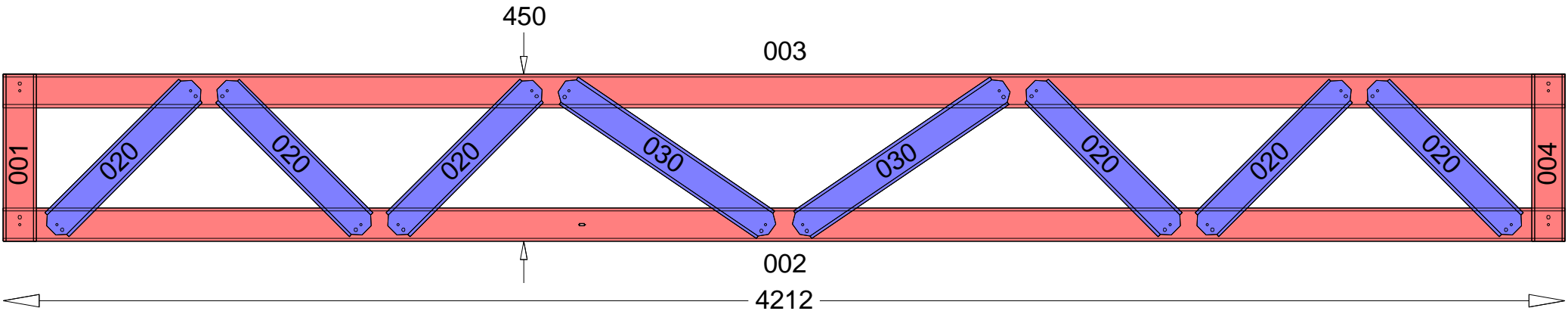


FloorBuilder Vers 1.9-19  
Endurocadd Vers 10.00.21  
Detail-opt S90T0.75\_S90B0.75\_2\_2\_450

PARTS LIST (per joist)					JOIST DETAILS		
DESCRIPTION	No	LEN	MAT	QTY	LENGTH	HEIGHT	WEIGHT
C9075ra	001	450	0.750	1	4212	450	15.31
C9075ra	002	4212	0.750	1	DETAILER	DETAILED	SCALE
C9075ra	003	4212	0.750	1	VANTAGE_DS\$ 21-10-2019		16
C9075ra	004	450	0.750	1	Job Number		JOIST
C9075ra	020	553.1	0.750	6	TSF_4413		J006
C9075ra	030	685.5	0.750	2	Machine Type		ENDUROTRUSS
TRUSSTITE	-			20	Fabricator		
SCREW-12-14x20-HEX	-			20	Customer		
					TRUE STEEL FRAMES		
					4 REDWOOD ST, ROSTREVOR		

DESIGN		QTY
Status	UNKNOWN	1
Approved		

Web - chord connection - 1 TRUSSTITE & 1 of 12-14x20 reinforcing screw.  
Chord - chord connection - 1 TRUSSTITE & 1 of 12-14x20 reinforcing screw.

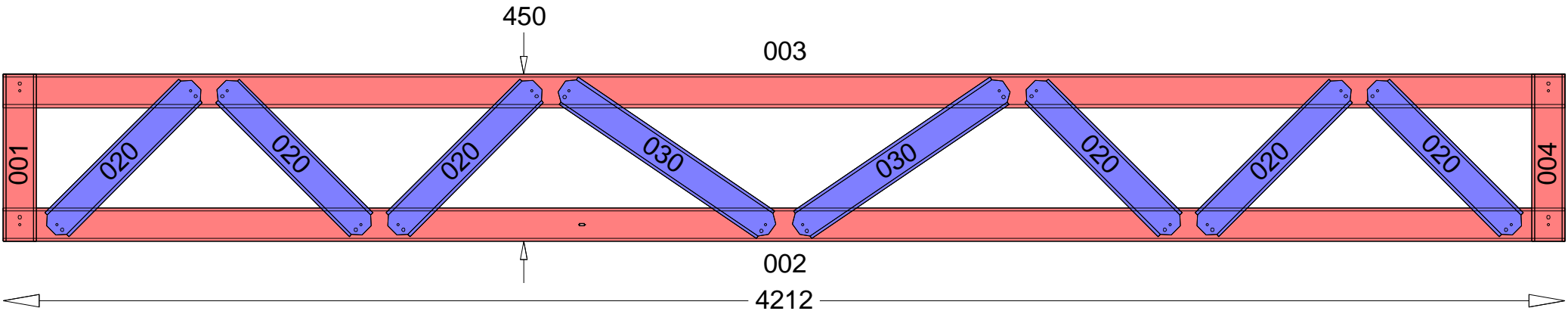


FloorBuilder Vers 1.9-19  
Endurocadd Vers 10.00.21  
Detail-opt S90T0.75\_S90B0.75\_2\_2\_450

PARTS LIST (per joist)					JOIST DETAILS		
DESCRIPTION	No	LEN	MAT	QTY	LENGTH	HEIGHT	WEIGHT
C9075ra	001	450	0.750	1	4212	450	15.31
C9075ra	002	4212	0.750	1	DETAILER	DETAILED	SCALE
C9075ra	003	4212	0.750	1	VANTAGE_DS\$ 21-10-2019		16
C9075ra	004	450	0.750	1	Job Number		JOIST
C9075ra	020	553.1	0.750	6	TSF_4413		J007
C9075ra	030	685.5	0.750	2	Machine Type		ENDUROTRUSS
TRUSSTITE	-			20	Fabricator		
SCREW-12-14x20-HEX	-			20	Customer		
					TRUE STEEL FRAMES		
					4 REDWOOD ST, ROSTREVOR		

DESIGN		QTY
Status	UNKNOWN	1
Approved		

Web - chord connection - 1 TRUSSTITE & 1 of 12-14x20 reinforcing screw.  
Chord - chord connection - 1 TRUSSTITE & 1 of 12-14x20 reinforcing screw.

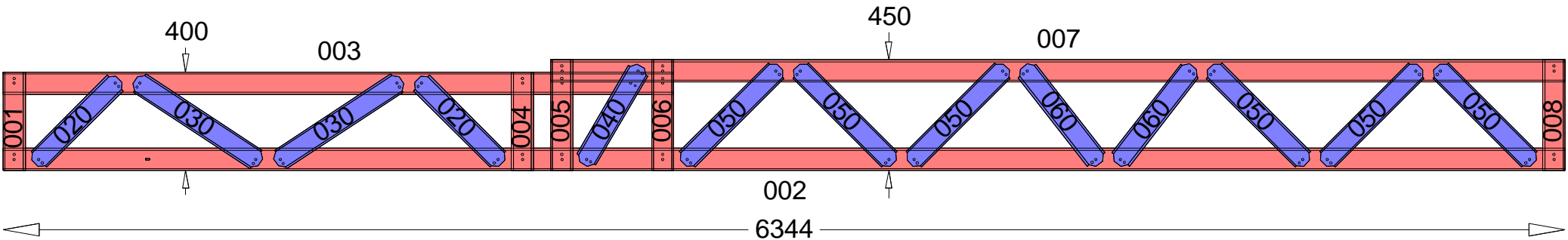


FloorBuilder Vers 1.9-19  
Endurocadd Vers 10.00.21  
Detail-opt S90T0.75\_S90B0.75\_2\_2\_450

PARTS LIST (per joist)					JOIST DETAILS		
DESCRIPTION	No	LEN	MAT	QTY	LENGTH	HEIGHT	WEIGHT
C9075ra	001	450	0.750	1	4212	450	15.31
C9075ra	002	4212	0.750	1	DETAILER	DETAILED	SCALE
C9075ra	003	4212	0.750	1	VANTAGE_DS\$ 21-10-2019		16
C9075ra	004	450	0.750	1	Job Number		JOIST
C9075ra	020	553.1	0.750	6	TSF_4413		J008
C9075ra	030	685.5	0.750	2	Machine Type		ENDUROTRUSS
TRUSSTITE	-			20	Fabricator		
SCREW-12-14x20-HEX	-			20	TRUE STEEL FRAMES		
					Customer		
					4 REDWOOD ST, ROSTREVOR		

DESIGN		QTY
Status	UNKNOWN	2
Approved		

Web - chord connection - 1 TRUSSTITE & 1 of 12-14x20 reinforcing screw.  
Chord - chord connection - 1 TRUSSTITE & 1 of 12-14x20 reinforcing screw.

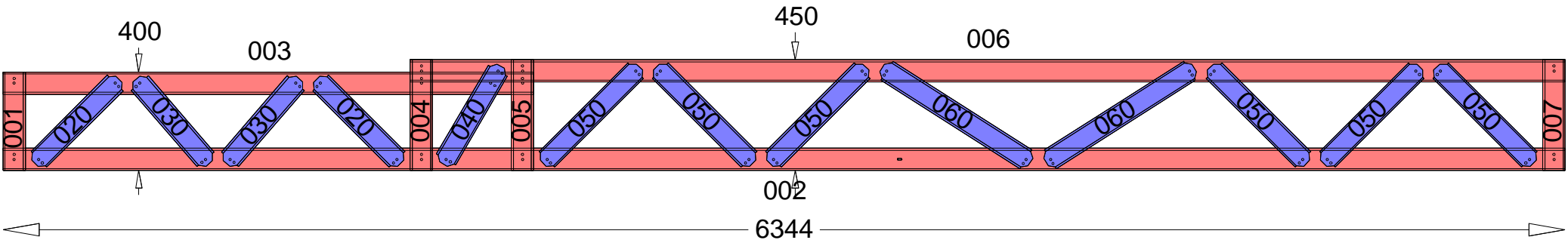


FloorBuilder Vers 1.9-19  
Endurocadd Vers 10.00.21  
Detail-opt S90T0.75\_S90B0.75\_2\_2\_450

PARTS LIST (per joist)										JOIST DETAILS		
DESCRIPTION	No	LEN	MAT	QTY	DESCRIPTION	No	LEN	MAT	QTY	LENGTH	HEIGHT	WEIGHT
C9075ra	001	400	0.750	1	C9075ra	040	460.8	0.750	1	6344	450	24.43
C9075ra	002	6344	0.750	1	C9075ra	050	553.1	0.750	6	DETAILER	DETAILED	SCALE
C9075ra	003	2724	0.750	1	C9075ra	060	500.1	0.750	2	VANTAGE_DS\$ 21-10-2019		24
C9075ra	004	400	0.750	1	TRUSSTITE	-			39	Job Number		JOIST
C9075ra	005	450	0.750	1	SCREW-12-14x20-HEX	-			39	TSF_4413		J009
C9075ra	006	450	0.750	1						Machine Type		ENDUROTRUSS
C9075ra	007	4120	0.750	1						Fabricator		
C9075ra	008	450	0.750	1						Customer		
C9075ra	020	482.4	0.750	2						TRUE STEEL FRAMES		
C9075ra	030	608.7	0.750	2						4 REDWOOD ST, ROSTREVOR		

DESIGN		QTY
Status	UNKNOWN	2
Approved		

Web - chord connection - 1 TRUSSTITE & 1 of 12-14x20 reinforcing screw.  
Chord - chord connection - 1 TRUSSTITE & 1 of 12-14x20 reinforcing screw.

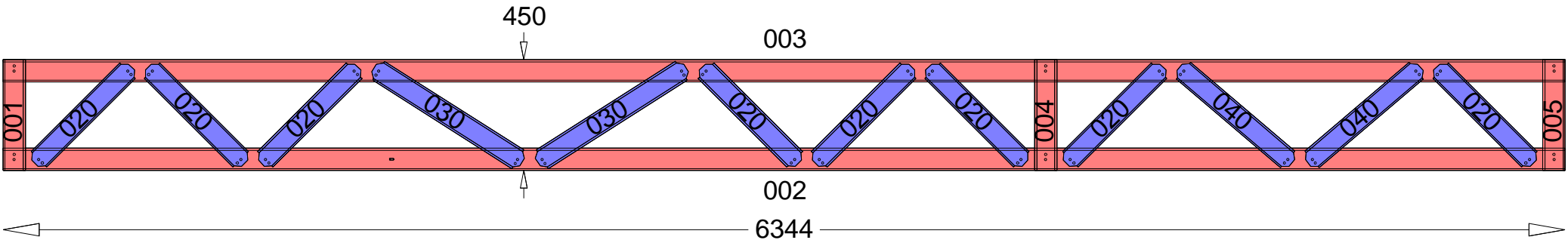


FloorBuilder Vers 1.9-19  
Endurocadd Vers 10.00.21  
Detail-opt S90T0.75\_S90B0.75\_2\_2\_450

PARTS LIST (per joist)										JOIST DETAILS		
DESCRIPTION	No	LEN	MAT	QTY	DESCRIPTION	No	LEN	MAT	QTY	LENGTH	HEIGHT	WEIGHT
C9075ra	001	400	0.750	1	C9075ra	050	553.1	0.750	6	6344	450	24.10
C9075ra	002	6344	0.750	1	C9075ra	060	713.9	0.750	2	DETAILER	DETAILED	SCALE
C9075ra	003	2154	0.750	1	TRUSSTITE	-			37	VANTAGE_DS\$ 21-10-2019		24
C9075ra	004	450	0.750	1	SCREW-12-14x20-HEX	-			37	Job Number		JOIST
C9075ra	005	450	0.750	1						TSF_4413		J010
C9075ra	006	4690	0.750	1						Machine Type		ENDUROTRUSS
C9075ra	007	450	0.750	1						Fabricator		
C9075ra	020	482.4	0.750	2						TRUE STEEL FRAMES		
C9075ra	030	453.1	0.750	2						Customer		
C9075ra	040	460.8	0.750	1						4 REDWOOD ST, ROSTREVOR		

DESIGN		QTY
Status	UNKNOWN	1
Approved		

Web - chord connection - 1 TRUSSTITE & 1 of 12-14x20 reinforcing screw.  
Chord - chord connection - 1 TRUSSTITE & 1 of 12-14x20 reinforcing screw.

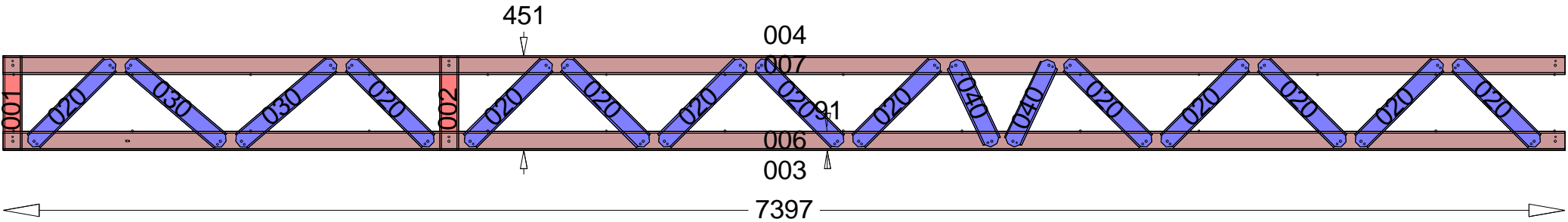


FloorBuilder Vers 1.9-19  
Endurocadd Vers 10.00.21  
Detail-opt S90T0.75\_S90B0.75\_2\_2\_450

PARTS LIST (per joist)						JOIST DETAILS		
DESCRIPTION	No	LEN	MAT	QTY		LENGTH	HEIGHT	WEIGHT
C9075ra	001	450	0.750	1		6344	450	23.03
C9075ra	002	6344	0.750	1		DETAILER	DETAILED	SCALE
C9075ra	003	6344	0.750	1		VANTAGE_DS\$ 21-10-2019		24
C9075ra	004	450	0.750	1		Job Number		JOIST
C9075ra	005	450	0.750	1		TSF_4413		J011
C9075ra	020	553.1	0.750	8		Machine Type		ENDUROTRUSS
C9075ra	030	713.9	0.750	2		Fabricator		
C9075ra	040	598.7	0.750	2		Customer		
TRUSSTITE	-			30		TRUE STEEL FRAMES		
SCREW-12-14x20-HEX	-			30		4 REDWOOD ST, ROSTREVOR		

DESIGN		QTY
Status	UNKNOWN	3
Approved		

Web - chord connection - 1 TRUSSTITE & 1 of 12-14x20 reinforcing screw.  
Chord - chord connection - 1 TRUSSTITE & 1 of 12-14x20 reinforcing screw.

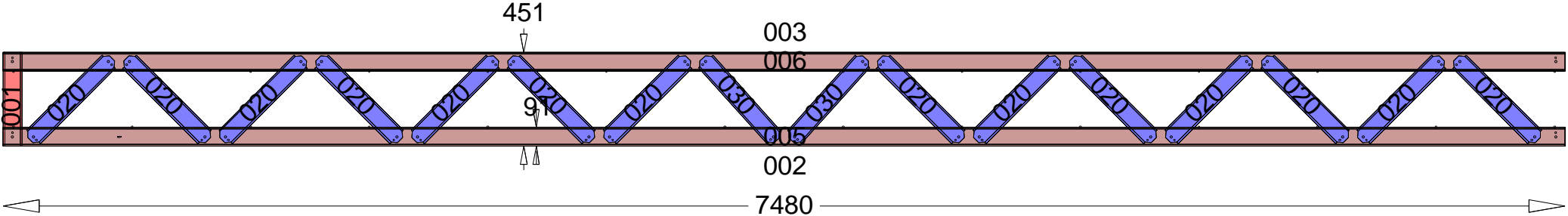


FloorBuilder Vers 1.9-19  
Endurocadd Vers 10.00.21  
Detail-opt B90T0.75\_B90B0.75\_2\_2\_600

PARTS LIST (per joist)										JOIST DETAILS		
DESCRIPTION	No	LEN	MAT	QTY	DESCRIPTION	No	LEN	MAT	QTY	LENGTH	HEIGHT	WEIGHT
C9075ra	001	450	0.750	1	SCREW-10-16x16-HEX	-			28	7397	450	42.65
C9075ra	002	450	0.750	1	SCREW-12-14x20-HEX	-			38	DETAILER	DETAILED	SCALE
C9075ra	003	7397	0.750	1						VANTAGE_DS	21-10-2019	28
C9075ra	004	7397	0.750	1						Job Number	JOIST	
C9075ra	006	7397	0.750	1						TSF_4413	J012	
C9075ra	007	7397	0.750	1						Machine Type	ENDUROTRUSS	
C9075ra	020	553.1	0.750	12						Fabricator	TRUE STEEL FRAMES	
C9075ra	030	599.8	0.750	2						Customer	4 REDWOOD ST, ROSTREVOR	
C9075ra	040	442.1	0.750	2								
TRUSSTITE	-			38								

DESIGN		QTY
Status	UNKNOWN	2
Approved		

Web - chord connection - 1 TRUSSTITE & 1 of 12-14x20 reinforcing screw.  
Chord - chord connection - 1 TRUSSTITE & 1 of 12-14x20 reinforcing screw.



FloorBuilder Vers 1.9-19  
Endurocadd Vers 10.00.21  
Detail-opt B90T0.75\_B90B0.75\_2\_2\_600

PARTS LIST (per joist)								JOIST DETAILS		
DESCRIPTION	No	LEN	MAT	QTY				LENGTH	HEIGHT	WEIGHT
C9075ra	001	450	0.750	1				7480	450	42.59
C9075ra	002	7480	0.750	1				DETAILER	DETAILED	SCALE
C9075ra	003	7480	0.750	1				VANTAGE_DS \$ 21-10-2019		29
C9075ra	005	7480	0.750	1				Job Number		JOIST
C9075ra	006	7480	0.750	1				TSF_4413		J013
C9075ra	020	553.1	0.750	14				Machine Type		ENDUROTRUSS
C9075ra	030	529	0.750	2						
TRUSSTITE	-			36						
SCREW-12-14x20-HEX	-			36		Fabricator	TRUE STEEL FRAMES			
SCREW-10-16x16-HEX	-			28		Customer	4 REDWOOD ST, ROSTREVOR			