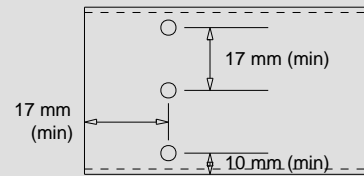
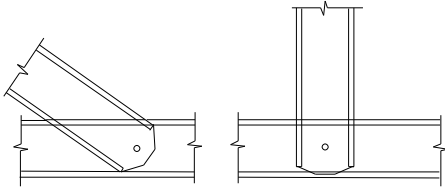


# Truss connections used in job: TSF\_4411 (Sheet 1 of 3)

Minimum screw-spacing = 17 mm  
 Minimum distance from end of part = 17 mm  
 Minimum distance from edge of part = 10 mm

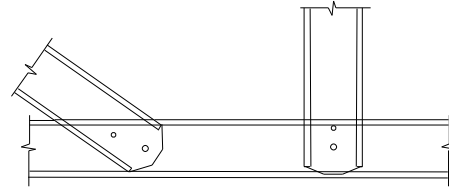


SC-WEB-CHORD-1



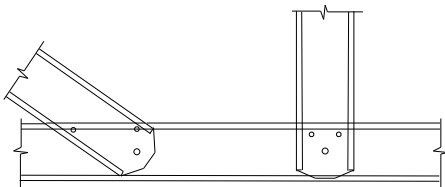
1x TRUSSTITE

SC-WEB-CHORD-2



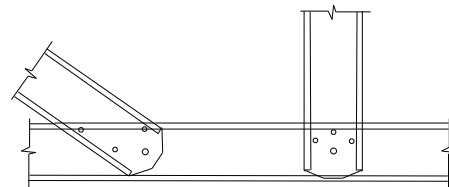
1x TRUSSTITE + 1 x 12-14 x 20 HEX SCREW  
(16MM MIN EDGE DISTANCE)

SC-WEB-CHORD-3



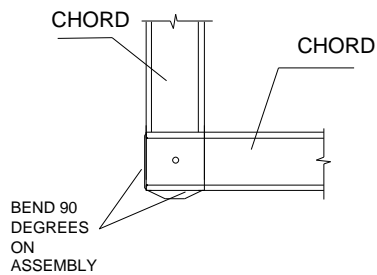
1x TRUSSTITE + 2 x 12-14 x 20 HEX SCREW  
(16MM MIN EDGE DISTANCE)

SC-WEB-CHORD-4



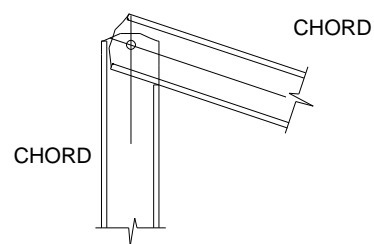
1x TRUSSTITE + 3 x 12-14 x 20 HEX SCREW  
(16MM MIN EDGE DISTANCE)

SC-HEEL-HS-F-90-75-1



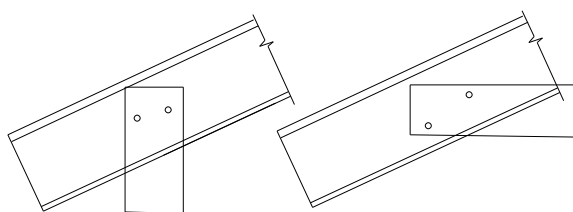
1 x TRUSSTITE

SC-APEX-HS-F-90-75-1



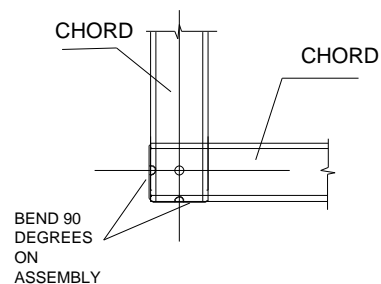
1 x TRUSSTITE

SC-PROP-90-75-2  
(CHORD SUPPORT - SHEAR CON.)



2X12-14X20 HEX SCREW CHORD TO BRACKET

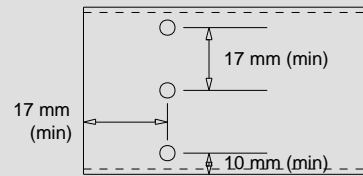
SC-HEEL-HS-90-75-1



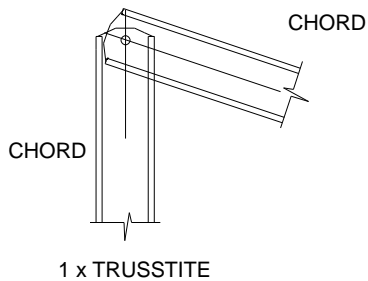
1 x TRUSSTITE

# Truss connections used in job: TSF\_4411 (Sheet 2 of 3)

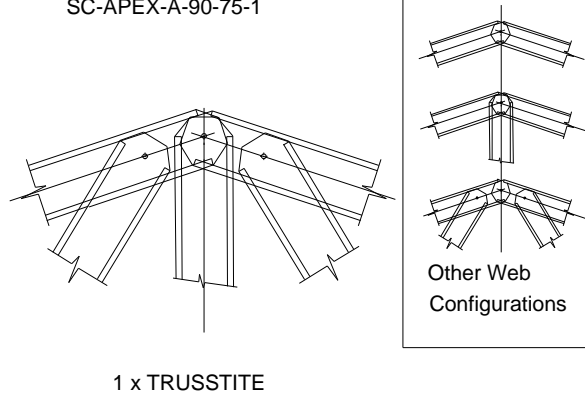
Minimum screw-spacing = 17 mm  
 Minimum distance from end of part = 17 mm  
 Minimum distance from edge of part = 10 mm



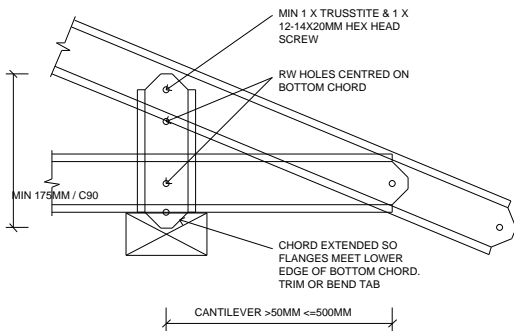
SC-APEX-HS-90-75-1



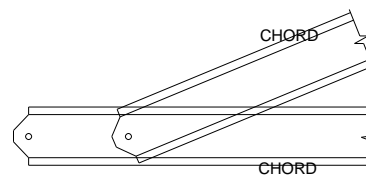
SC-APEX-A-90-75-1



SC-CHORDPT-S-90-55-2

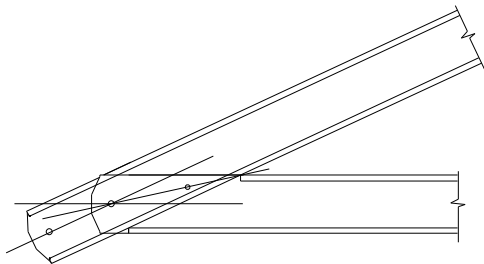


SC-CHORDPT-B-90-75-2



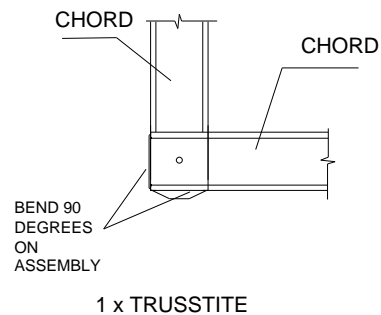
TRUSSTITE + 1 X 12-14X20 HEX SCREW

SC-HEEL-A-90-75-2

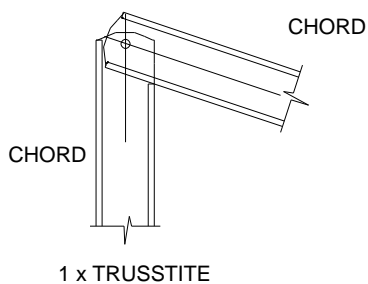


TRUSSTITE + 1X12-14X20 HEX SCREW

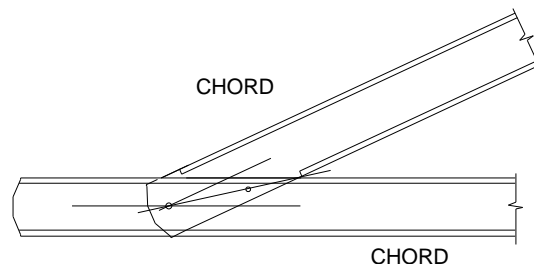
SC-HEEL-HS-F-90-10-1



SC-APEX-HS-F-90-10-1



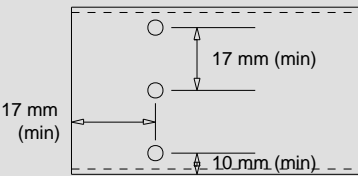
SC-CHORDPT-A-90-10-2



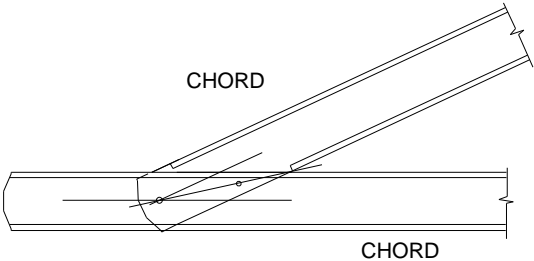
TRUSSTITE + 1X12-14X20 HEX SCREWS

# Truss connections used in job: TSF\_4411 (Sheet 3 of 3)

Minimum screw-spacing = 17 mm  
Minimum distance from end of part = 17 mm  
Minimum distance from edge of part = 10 mm

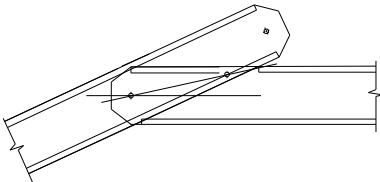


SC-CHORDPT-A-90-75-2

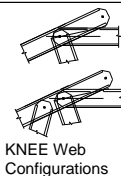


TRUSSTITE + 1X12-14X20 HEX SCREWS

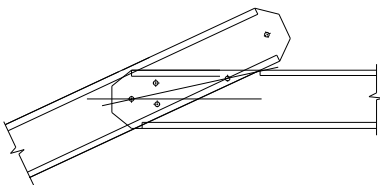
SC-KNEE-A-90-75-2



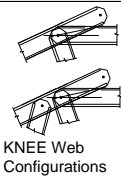
TRUSSTITE + 1X12-14X20 HEX SCREW



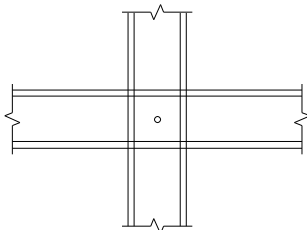
SC-KNEE-A-90-75-4



TRUSSTITE + 3X12-14X20 HEX SCREWS



SC-CROSS-90-75-1



NON-FLUSH CONNECTION ONLY  
1 X TRUSSTITE

smart: YES flush: NO  
restraint: none

LEFT ← → RIGHT

Connection Table		
A	HEEL_HS	SC-HEEL-HS-90-75-1
B	APEX_HS	SC-APEX-HS-90-75-1

ANALYSIS		QTY
Status	PASS	2
Approved BY		

Chord - Web Connections

040-3

Part Id  
Total no. fasteners at each end of the web

Connection type: (Apex,knee,heel,elbow,chordpt)

SC-HEEL-A-75-10-6

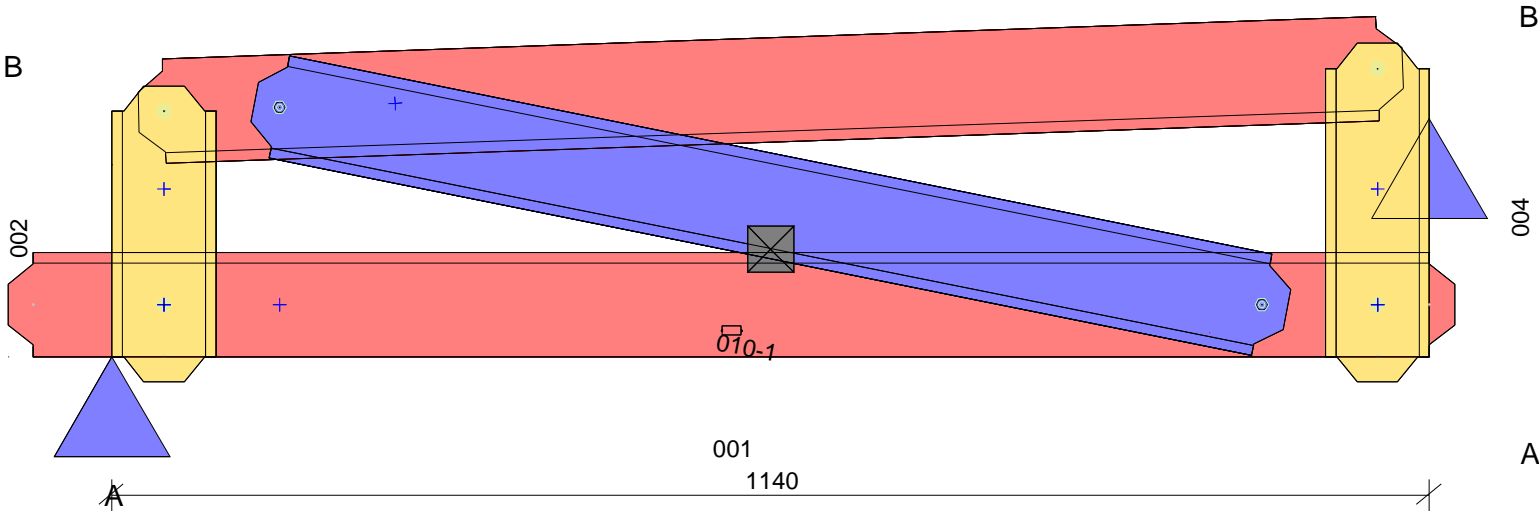
Truss system: ENDUROTRUSS (c) C profile

Channel depth: Depth of channel -section in mm

Connection variant: (A is heel with no stiffener)

Fastener number: Total number of fasteners used in the connection including locating truss screw and reinforcing screws

Channel gauge: (75 = 0.75 mm BMT 10 = 1.0 mm BMT) etc



Chords placed flange-DOWN, Webs placed flange-UP.  
Min screws per conn: 1 ( Screw locations diagrammatic only. Refer connection sheet for details.)

PARTS LIST (per truss)					ASSEMBLY DETAILS			TRUSS DETAILS			
DESCRIPTION	No.	LEN	MAT	QTY	APEX HEIGHT	LEFT PITCH	RIGHT PITCH	UNCROPPED LENGTH	UNCROPPED HEIGHT	WEIGHT	
C9075ra	001	1252	0.75	1	N/A	2 deg	-	1252	317	4.2	
C9075ra	002	256.4	0.75	1							
C9075ra	003	1094.6	0.75	1	Precamber = 0.0 mm			DETAILER	DETAILED	SCALE	
C9075ra	004	293.1	0.75	1				VANTAGE_DS	23-10-2019	1:7	
C9075ra	010	911.1	0.75	1				JOB NUMBER		TRUSS	
TRUSSTITE				6				TSF_4411		T001	
					FABRICATOR:	TRUE STEEL FRAMES		Machine Type		ENDUROTRUSS	
					CLIENT REF:	4 REDWOOD ST, ROSTREVOR					
					CUSTOMER :	BERT FARINA CONSTRUCTION					
					Page 1 of 1						

Loading: USER-W34N(m,6,-0.2,-0.13,-0.25,0,0,0,0,0,0,-1.1,-1.1,0,1200,0,0,0,0,0,600,0,0,A,1,1,1,1,1,,N1,,,,,5000,S,8000,,SEALED,)

smart: YES flush: NO  
restraint: none

LEFT ← → RIGHT

ANALYSIS

QTY

Status

PASS

Approved BY

4

Chord - Web Connections

040-3

Part Id  
Total no. fasteners at each end of the web

Connection type:  
(Apex,knee,heel,elbow,chordpt)

SC-HEEL-A-75-10-6

Truss system:  
ENDUROTRUSS (c)  
C profile

Channel depth:  
Depth of channel -section in mm

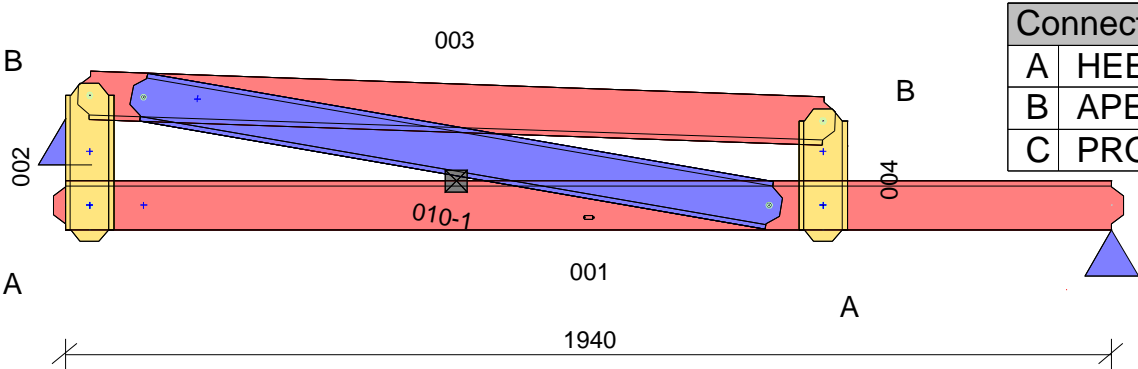
A-75-10-6

Connection variant:  
(A is heel with no stiffener)

Fastener number:  
Total number of fasteners used in the connection including locating truss screw and reinforcing screws

10-6

Channel gauge:  
(75 = 0.75 mm BMT  
10 = 1.0 mm BMT)  
etc



Connection Table		
A	HEEL_HS	SC-HEEL-HS-90-75-1
B	APEX_HS	SC-APEX-HS-90-75-1
C	PROP	SC-PROP-90-75-2

Chords placed flange-DOWN, Webs placed flange-UP.  
Min screws per conn: 1 ( Screw locations diagrammatic only. Refer connection sheet for details.)

PARTS LIST (per truss)					ASSEMBLY DETAILS			TRUSS DETAILS		
DESCRIPTION	No.	LEN	MAT	QTY	APEX HEIGHT	LEFT PITCH	RIGHT PITCH	UNCROPPED LENGTH	UNCROPPED HEIGHT	WEIGHT
C9075ra	001	1984	0.75	1	N/A	-	2 deg	1984	317	5.6
C9075ra	002	293.1	0.75	1				Precamber = 0.0 mm	DETAILER	DETAILED
C9075ra	003	1404.8	0.75	1	VANTAGE_DS	23-10-2019	1:15			
C9075ra	004	245.6	0.75	1	JOB NUMBER		TRUSS			
C9075ra	010	1221.3	0.75	1	TSF_4411		T002			
TRUSSTITE				6	FABRICATOR:	TRUE STEEL FRAMES			Machine Type	
					CLIENT REF:	4 REDWOOD ST, ROSTREVOR				
					CUSTOMER :	BERT FARINA CONSTRUCTION		Page 1 of 1		

smart: YES flush: NO  
restraint: none

LEFT ← → RIGHT

ANALYSIS		QTY
Status	PASS	5
Approved BY		

Chord - Web Connections

040-3

Part Id  
Total no. fasteners at each end of the web

Connection type:  
(Apex,knee,heel, elbow,chordpt)

SC-HEEL-

Truss system:  
ENDUROTRUSS (c)  
C profile

Channel depth:  
Depth of channel -section in mm

A-75-

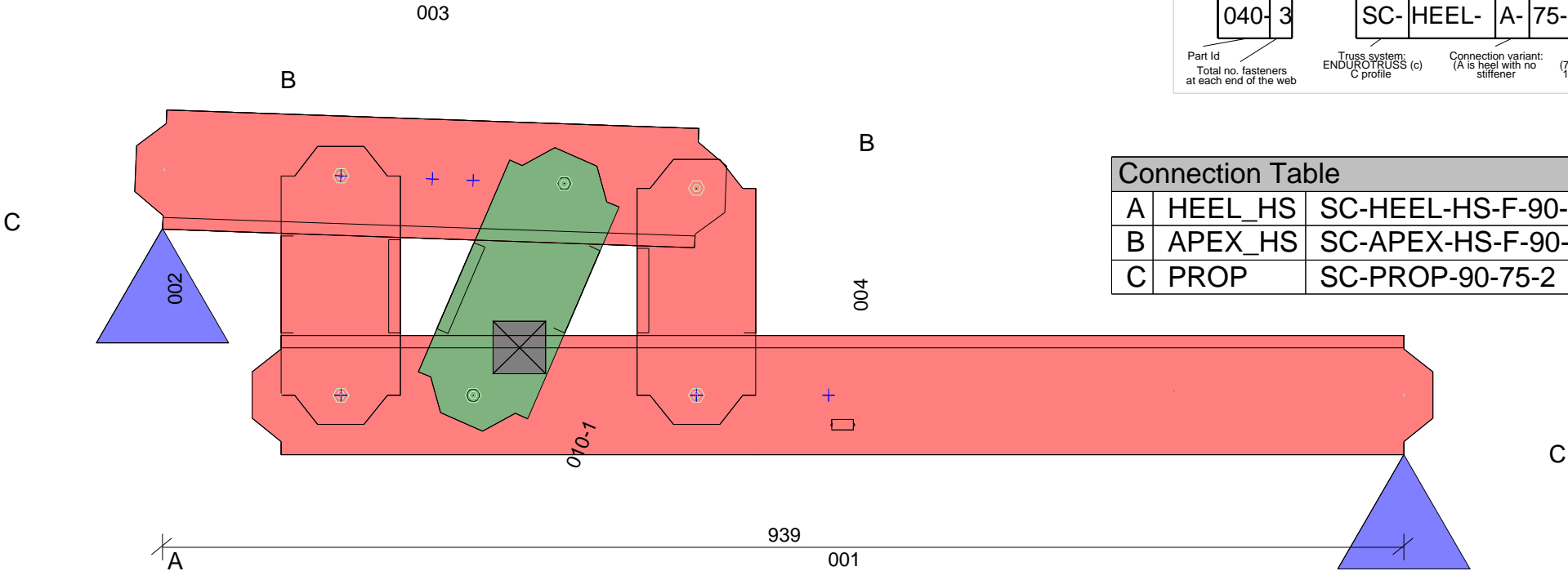
Connection variant:  
(A is heel with no stiffener)

Fastener number:  
Total number of fasteners used in the connection including locating truss screw and reinforcing screws

10-6

Channel gauge:  
(75 = 0.75 mm BMT  
10 = 1.0 mm BMT)  
etc

Connection Table		
A	HEEL_HS	SC-HEEL-HS-F-90-75-1
B	APEX_HS	SC-APEX-HS-F-90-75-1
C	PROP	SC-PROP-90-75-2



Chords placed flange-DOWN, Webs placed flange-UP.  
Min screws per conn: 1 ( Screw locations diagrammatic only. Refer connection sheet for details.)

PARTS LIST (per truss)					ASSEMBLY DETAILS			TRUSS DETAILS			
DESCRIPTION	No.	LEN	MAT	QTY	APEX HEIGHT	LEFT PITCH	RIGHT PITCH	UNCROPPED LENGTH	UNCROPPED HEIGHT	WEIGHT	
C9075ra	001	893	0.75	1	N/A	-	2 deg	983	261	2.2	
C9075ra	002	210	0.75	1							
C9075ra	003	446.6	0.75	1	Precamber = 0.0 mm			DETAILER	DETAILED	SCALE	
C9075ra	004	200.6	0.75	1				VANTAGE_DS	23-10-2019	1:5	
C9075ra	010	218.3	0.75	1				JOB NUMBER		TRUSS	
TRUSSTITE				6				TSF_4411		T003	
					FABRICATOR:	TRUE STEEL FRAMES		Machine Type		ENDUROTRUSS	
					CLIENT REF:	4 REDWOOD ST, ROSTREVOR					
					CUSTOMER :	BERT FARINA CONSTRUCTION					
					Page 1 of 1						

Loading: USER-W34N(m,6,-0.2,-0.13,-0.25,0,0,0,0,0,0,-1.1,-1.1,0,1200,0,0,0,0,0,600,0,0,A,1,1,1,1,1,,N1,,,,,5000,S,8000,,SEALED,)

smart: YES flush: NO  
restraint: none

LEFT ← → RIGHT

ANALYSIS		QTY
Status	PASS	1
Approved BY		

Chord - Web Connections

040-3

Part Id  
Total no. fasteners at each end of the web

Connection type:  
(Apex,knee,heel,elbow,chordpt)

SC-HEEL-

Truss system:  
ENDUROTRUSS (c)  
C profile

Channel depth:  
Depth of channel -section in mm

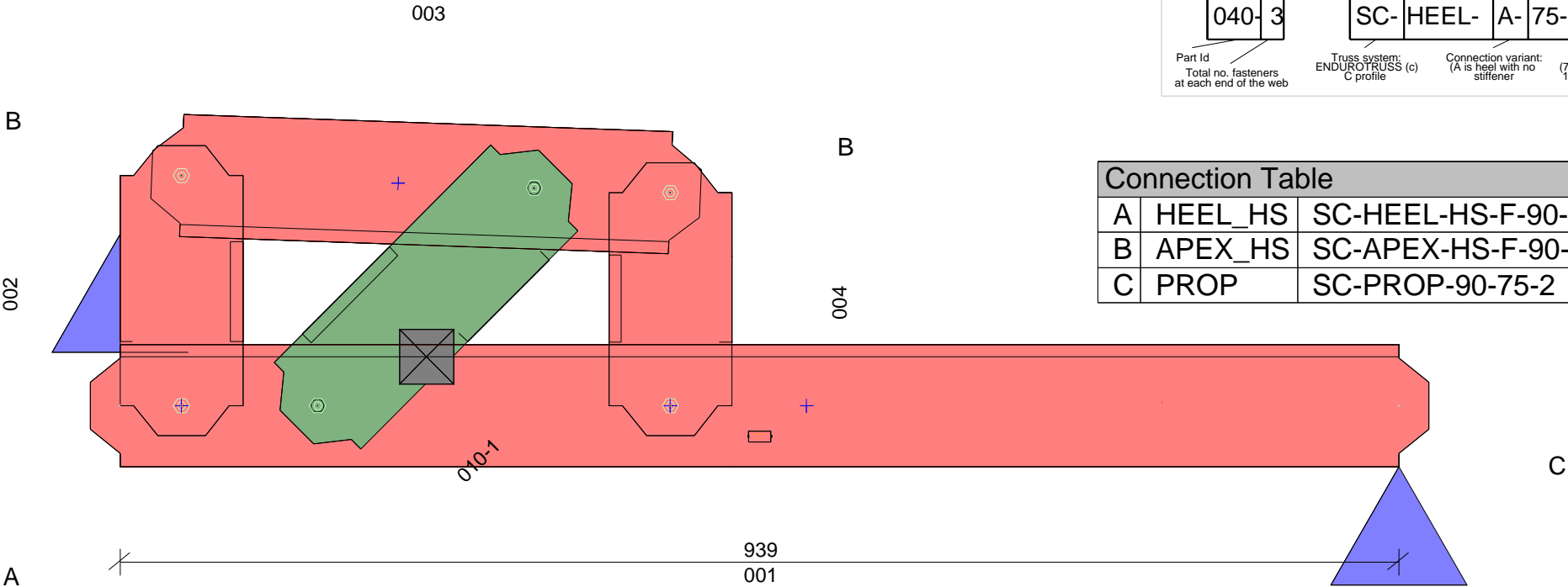
A-75-

Connection variant:  
(A is heel with no stiffener)

Fastener number:  
Total number of fasteners used in the connection including locating truss screw and reinforcing screws

10-6

Channel gauge:  
(75 = 0.75 mm BMT  
10 = 1.0 mm BMT etc)



Connection Table		
A	HEEL_HS	SC-HEEL-HS-F-90-75-1
B	APEX_HS	SC-APEX-HS-F-90-75-1
C	PROP	SC-PROP-90-75-2

Chords placed flange-DOWN, Webs placed flange-UP.  
Min screws per conn: 1 ( Screw locations diagrammatic only. Refer connection sheet for details.)

PARTS LIST (per truss)					ASSEMBLY DETAILS			TRUSS DETAILS		
DESCRIPTION	No.	LEN	MAT	QTY	APEX HEIGHT	LEFT PITCH	RIGHT PITCH	UNCROPPED LENGTH	UNCROPPED HEIGHT	WEIGHT
C9075ra	001	983	0.75	1	N/A	-	2 deg	983	260	2.3
C9075ra	002	213.1	0.75	1				Precamber = 0.0 mm	DETAILER	DETAILED
C9075ra	003	403.2	0.75	1	VANTAGE_DS	23-10-2019	1:5			
C9075ra	004	200.6	0.75	1	JOB NUMBER		TRUSS			
C9075ra	010	269.7	0.75	1	TSF_4411		T004			
TRUSSTITE				6	FABRICATOR:	TRUE STEEL FRAMES			Machine Type	
					CLIENT REF:	4 REDWOOD ST, ROSTREVOR				
					CUSTOMER :	BERT FARINA CONSTRUCTION		Page 1 of 1		

10.00.21 TRUSS-T004-23-10-2019-12:37:50 TrussBuilder Vers 1.2-20 G3=22

Loading: USER-W34N(m,6,-0.2,-0.13,-0.25,0,0,0,0,0,0,-1.1,-1.1,0,1200,0,0,0,0,0,600,0,0,A,1,1,1,1,1,,N1,,,,,5000,S,8000,,SEALED,)

smart: YES flush: NO  
restraint: none

LEFT ← → RIGHT

ANALYSIS		QTY
Status	PASS	1
Approved BY		

Chord - Web Connections

040-3

Part Id  
Total no. fasteners at each end of the web

Connection type:  
(Apex,knee,heel,elbow,chordpt)

SC-HEEL-

Truss system:  
ENDUROTRUSS (c)  
C profile

Channel depth:  
Depth of channel -section in mm

A-75-

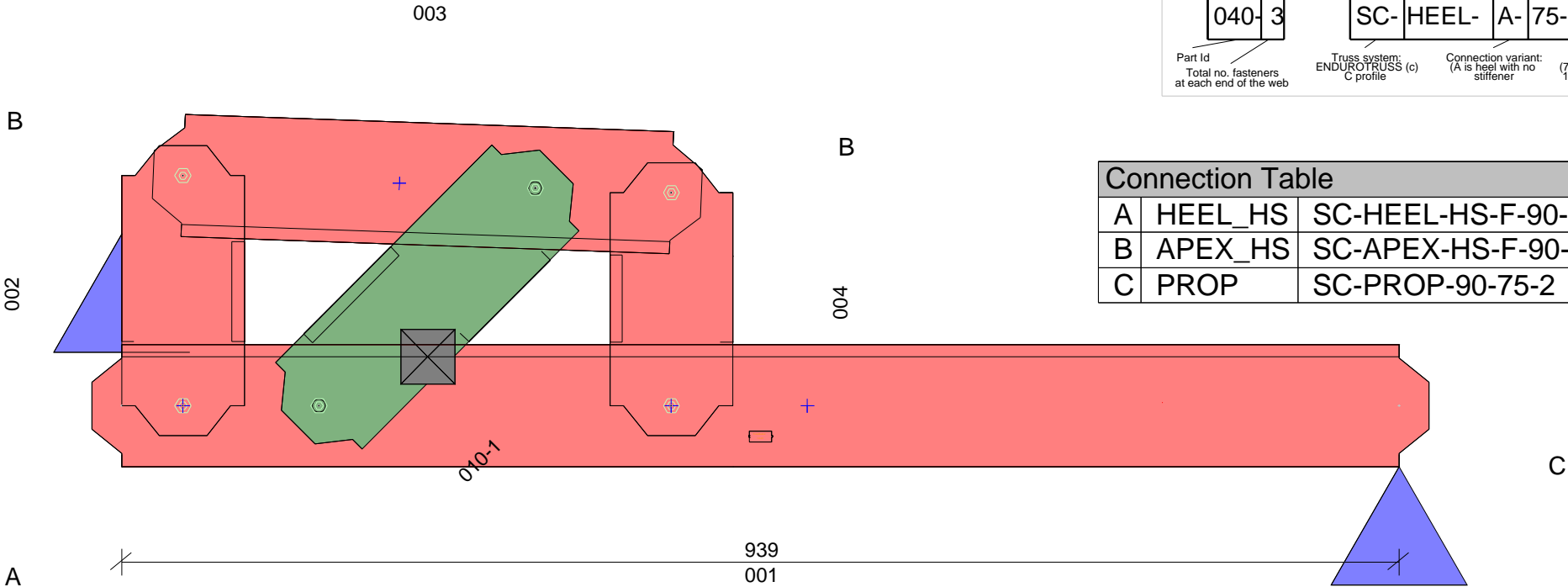
Connection variant:  
(A is heel with no stiffener)

Fastener number:  
Total number of fasteners used in the connection including locating truss screw and reinforcing screws

10-6

Channel gauge:  
(75 = 0.75 mm BMT  
10 = 1.0 mm BMT etc)

Connection Table		
A	HEEL_HS	SC-HEEL-HS-F-90-75-1
B	APEX_HS	SC-APEX-HS-F-90-75-1
C	PROP	SC-PROP-90-75-2



Chords placed flange-DOWN, Webs placed flange-UP.  
Min screws per conn: 1 ( Screw locations diagrammatic only. Refer connection sheet for details.)

PARTS LIST (per truss)					ASSEMBLY DETAILS			TRUSS DETAILS			
DESCRIPTION	No.	LEN	MAT	QTY	APEX HEIGHT	LEFT PITCH	RIGHT PITCH	UNCROPPED LENGTH	UNCROPPED HEIGHT	WEIGHT	
C9075ra	001	983	0.75	1	N/A	-	2 deg	983	260	2.3	
C9075ra	002	213.1	0.75	1							
C9075ra	003	403.2	0.75	1	Precamber = 0.0 mm			DETAILER	DETAILED	SCALE	
C9075ra	004	200.6	0.75	1				VANTAGE_DS	23-10-2019	1:5	
C9075ra	010	269.7	0.75	1				JOB NUMBER		TRUSS	
TRUSSTITE				6				TSF_4411		T005	
					FABRICATOR:	TRUE STEEL FRAMES					
					CLIENT REF:	4 REDWOOD ST, ROSTREVOR		Machine Type	ENDUROTRUSS		
					CUSTOMER :	BERT FARINA CONSTRUCTION					

Page 1 of 1



smart: YES flush: NO  
restraint: none

LEFT ← → RIGHT

Connection Table		
A	HEEL_HS	SC-HEEL-HS-90-75-1
B	HEEL	SC-HEEL-A-90-75-2
C	KNEE	SC-KNEE-A-90-75-4
D	APEX_HS	SC-APEX-HS-90-75-1

ANALYSIS		QTY
Status	PASS	1
Approved BY		

Chord - Web Connections

040-3

Part Id  
Total no. fasteners at each end of the web

Connection type:  
(Apex,knee,heel,elbow,chordpt)

Channel depth:  
Depth of channel -section in mm

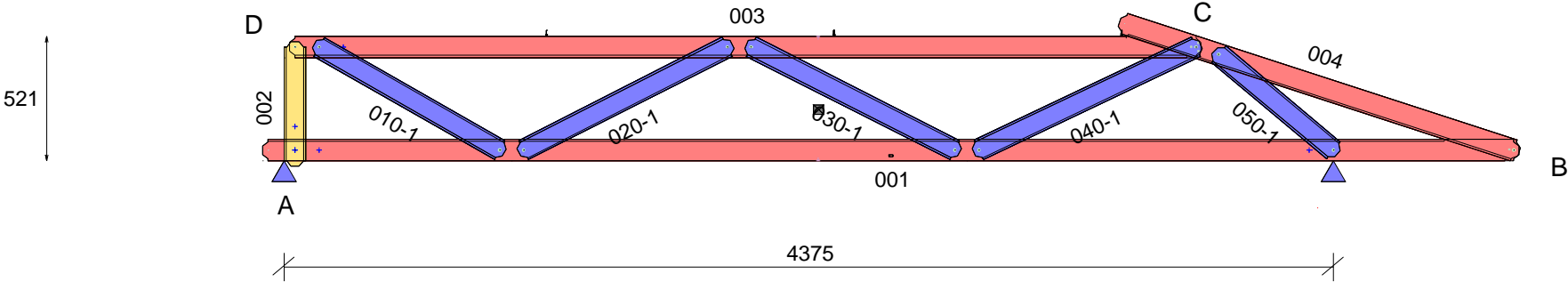
Fastener number:  
Total number of fasteners used in the connection including locating truss screw and reinforcing screws

SC-HEEL-A-75-10-6

Truss system:  
ENDUROTRUSS (c)  
C profile

Connection variant:  
(A is heel with no stiffener)

Channel gauge:  
(75 = 0.75 mm BMT  
10 = 1.0 mm BMT)  
etc



QUALITY CHECK: Top of TOP CHORD to Bottom of BOTTOM CHORD: 520  
Chords placed flange-DOWN, Webs placed flange-UP.  
Min screws per conn: 1 ( Screw locations diagrammatic only. Refer connection sheet for details.)

PARTS LIST (per truss)										ASSEMBLY DETAILS			TRUSS DETAILS								
DESCRIPTION	No.	LEN	MAT	QTY	DESCRIPTION	No.	LEN	MAT	QTY	APEX HEIGHT	LEFT PITCH	RIGHT PITCH	UNCROPPED LENGTH	UNCROPPED HEIGHT	WEIGHT						
C9075ra	001	5239.1	0.75	1	SCREW-12-14x20-HEX				4	N/A	-	18 deg	5252	644	17.3						
C9075ra	002	520	0.75	1									DETAILER	DETAILED	SCALE						
C9075ra	003	3800.1	0.75	1									VANTAGE_DS	23-10-2019	1:30						
C9075ra	004	1751.6	0.75	1									JOB NUMBER		TRUSS						
C9075ra	010	911.7	0.75	1									TSF_4411		T100						
C9075ra	020	995.4	0.75	1									Machine Type		ENDUROTRUSS						
C9075ra	030	995.3	0.75	1									BERT FARINA CONSTRUCTION								
C9075ra	040	1046.5	0.75	1																	
C9075ra	050	667.7	0.75	1																	
TRUSSTITE				13																	
SCREW-M6.5-12x42-TEK				3																	

Loading: USER-W34N(m,6,-0.2,-0.13,-0.25,0,0,0,0,0,0,-1.1,-1.1,0,1200,0,0,0,0,0,600,0,0,A,1,1,1,1,1,,N1,,,,,5000,S,8000,,SEALED,)

smart: YES flush: NO  
restraint: none

LEFT ← → RIGHT

ANALYSIS

QTY

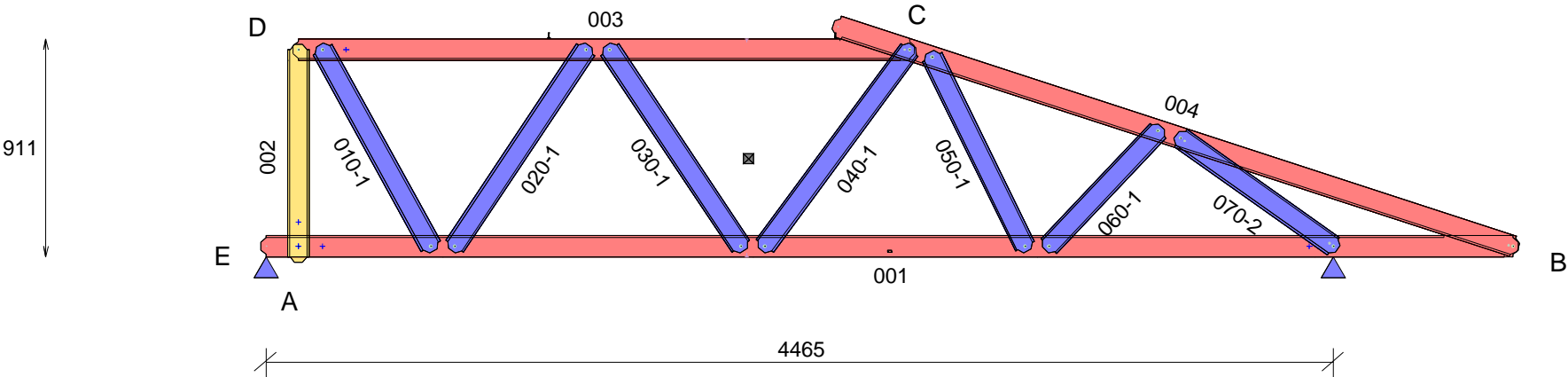
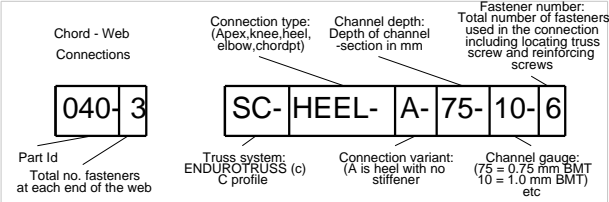
Status

PASS

Approved BY

1

Connection Table		
A	HEEL_HS	SC-HEEL-HS-90-75-1
B	HEEL	SC-HEEL-A-90-75-2
C	KNEE	SC-KNEE-A-90-75-2
D	APEX_HS	SC-APEX-HS-90-75-1
E	PROP	SC-PROP-90-75-2



QUALITY CHECK: Top of TOP CHORD to Bottom of BOTTOM CHORD: 911  
Chords placed flange-DOWN, Webs placed flange-UP.  
Min screws per conn: 1 ( Screw locations diagrammatic only. Refer connection sheet for details.)

PARTS LIST (per truss)										ASSEMBLY DETAILS			TRUSS DETAILS		
DESCRIPTION	No.	LEN	MAT	QTY	DESCRIPTION	No.	LEN	MAT	QTY	APEX HEIGHT	LEFT PITCH	RIGHT PITCH	UNCROPPED LENGTH	UNCROPPED HEIGHT	WEIGHT
C9075ra	001	5261.1	0.75	1	TRUSSTITE				17	N/A	-	18 deg	5274	1034	20
C9075ra	002	910	0.75	1	SCREW-M6.5-12x42-TEK				2				Precamber = 0.0 mm	DETAILER	DETAILED
C9075ra	003	2600.1	0.75	1	SCREW-12-14x20-HEX				4	VANTAGE_DS	23-10-2019	1:30			
C9075ra	004	3013.4	0.75	1					JOB NUMBER		TRUSS				
C9075ra	010	981.9	0.75	1					TSF_4411		T101				
C9075ra	020	1031.3	0.75	1					FABRICATOR:		TRUE STEEL FRAMES				
C9075ra	030	1031.3	0.75	1					CLIENT REF:		4 REDWOOD ST, ROSTREVOR				
C9075ra	040	1064	0.75	1					CUSTOMER :		BERT FARINA CONSTRUCTION				
C9075ra	050	924.1	0.75	1											
C9075ra	060	708.6	0.75	1											
C9075ra	070	826.3	0.75	1											

Page 1 of 1

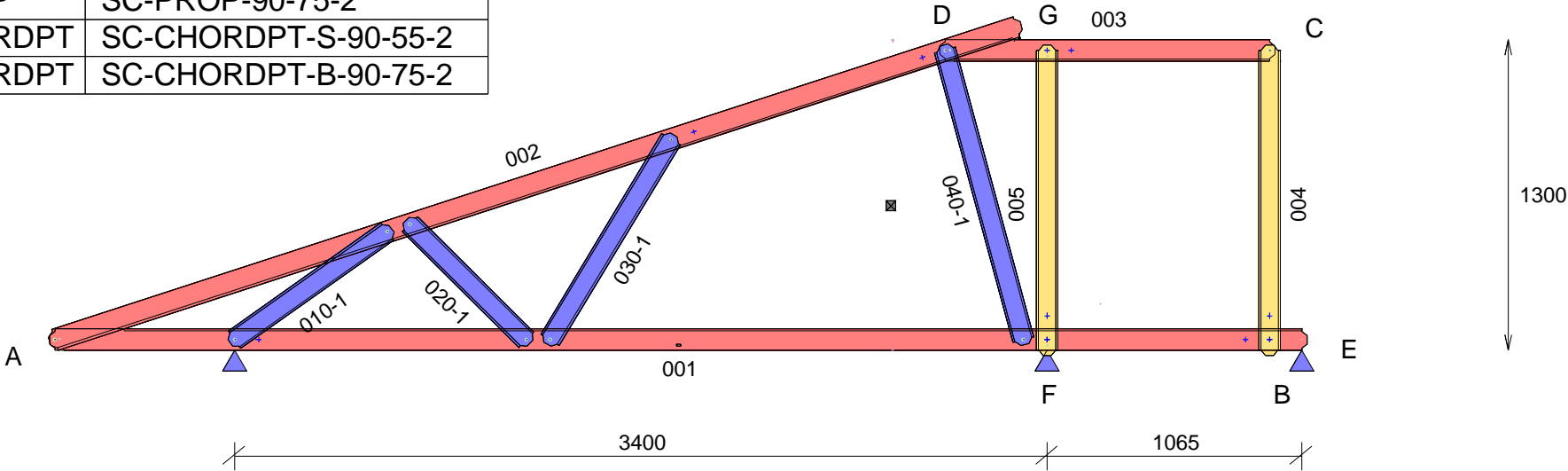
smart: YES flush: NO  
restraint: none

LEFT ← → RIGHT

ANALYSIS		QTY
Status	PASS	1
Approved BY		

Connection Table		
A	HEEL	SC-HEEL-A-90-75-2
B	HEEL_HS	SC-HEEL-HS-90-75-1
C	APEX_HS	SC-APEX-HS-90-75-1
D	KNEE	SC-KNEE-A-90-75-2
E	PROP	SC-PROP-90-75-2
F	CHORDPT	SC-CHORDPT-S-90-55-2
G	CHORDPT	SC-CHORDPT-B-90-75-2

Chord - Web Connections	Connection type: (Apex,knee,heel,elbow,chordpt)	Channel depth: Depth of channel -section in mm	Fastener number: Total number of fasteners used in the connection including locating truss screw and reinforcing screws
040-3	SC-HEEL-A-75-10-6		
Part Id Total no. fasteners at each end of the web	Truss system: ENDUROTRUSS (c) C profile	Connection variant: (A is heel with no stiffener)	Channel gauge: (75 = 0.75 mm BMT 10 = 1.0 mm BMT) etc



QUALITY CHECK: Top of TOP CHORD to Bottom of BOTTOM CHORD: 1300  
Chords placed flange-DOWN, Webs placed flange-UP.  
Min screws per conn: 1 ( Screw locations diagrammatic only. Refer connection sheet for details.)

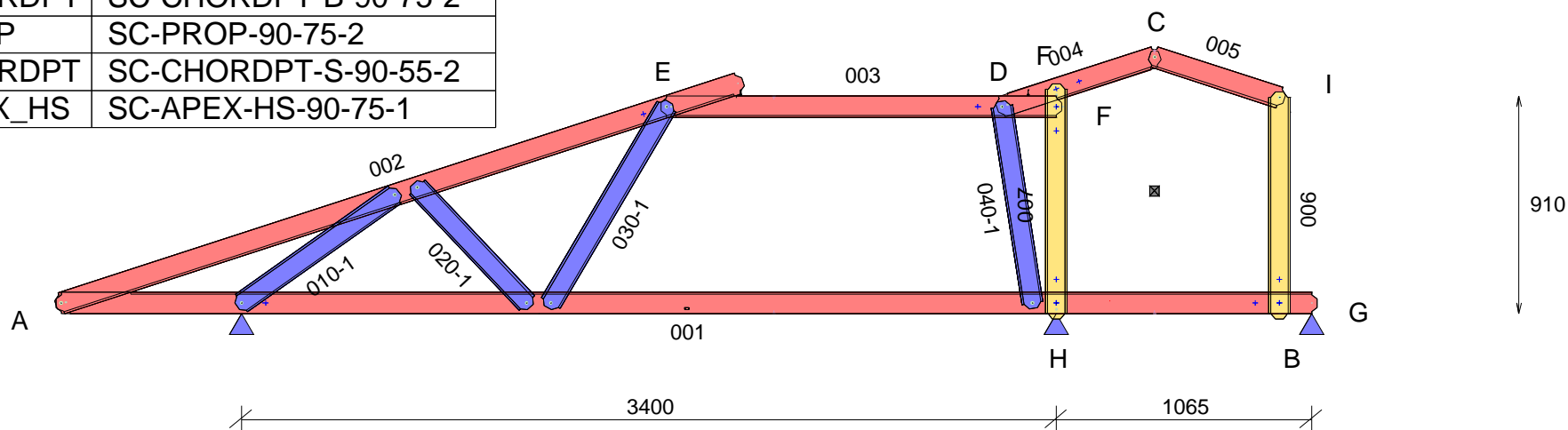
PARTS LIST (per truss)										ASSEMBLY DETAILS			TRUSS DETAILS			
DESCRIPTION	No.	LEN	MAT	QTY	DESCRIPTION	No.	LEN	MAT	QTY	APEX HEIGHT	LEFT PITCH	RIGHT PITCH	UNCROPPED LENGTH	UNCROPPED HEIGHT	WEIGHT	
C9075ra	001	5261.1	0.75	1	SCREW-12-14x20-HEX				4	N/A	18 deg	-	5274	1424	18.9	
C9075ra	002	4274.1	0.75	1						Precamber = 0.0 mm			DETAILER	DETAILED	SCALE	
C9075ra	003	1401.1	0.75	1									VANTAGE_DS	23-10-2019	1:30	
C9075ra	004	1299	0.75	1									JOB NUMBER		TRUSS	
C9075ra	005	1299.2	0.75	1									TSF_4411		T102	
C9075ra	010	826.3	0.75	1									Machine Type		ENDUROTRUSS	
C9075ra	020	729.3	0.75	1						FABRICATOR:	TRUE STEEL FRAMES					
C9075ra	030	1022.7	0.75	1						CLIENT REF:	4 REDWOOD ST, ROSTREVOR					
C9075ra	040	1297.8	0.75	1						CUSTOMER :	BERT FARINA CONSTRUCTION					
TRUSSTITE				13												
SCREW-M6.5-12x42-TEK				2												
										Page 1 of 1						

smart: YES    flush: NO  
restraint: none

LEFT  RIGHT

ANALYSIS		QTY
Status	PASS	1
Approved BY		

Connection Table		
A	HEEL	SC-HEEL-A-90-75-2
B	HEEL_HS	SC-HEEL-HS-90-75-1
C	APEX	SC-APEX-A-90-75-1
D	CHORDPT	SC-CHORDPT-A-90-75-2
E	KNEE	SC-KNEE-A-90-75-2
F	CHORDPT	SC-CHORDPT-B-90-75-2
G	PROP	SC-PROP-90-75-2
H	CHORDPT	SC-CHORDPT-S-90-55-2
I	APEX_HS	SC-APEX-HS-90-75-1



10.00.21 TRUSS-T103-23-10-2019-12:38:39 TrussBuilder Vers 1.2-20 G3=22

Min screws per conn: 1 (Screw locations diagrammatic only. Refer connection sheet for details.)

PARTS LIST (per truss)										ASSEMBLY DETAILS			TRUSS DETAILS		
DESCRIPTION	No.	LEN	MAT	QTY	DESCRIPTION	No.	LEN	MAT	QTY	APEX HEIGHT	LEFT PITCH	RIGHT PITCH	UNCROPPED LENGTH	UNCROPPED HEIGHT	WEIGHT
C9075ra	001	5261.1	0.75	1	TRUSSTITE				15	1102	18 deg	18 deg	5274	1144	18
C9075ra	002	3012.3	0.75	1	SCREW-12-14x20-HEX				6	Precamber = 0.0 mm			DETAILER	DETAILED	SCALE
C9075ra	003	1671.3	0.75	1	SCREW-M6.5-12x42-TEK				2				VANTAGE_DS	23-10-2019	1:30
C9075ra	004	713.9	0.75	1					JOB NUMBER				TRUSS		
C9075ra	005	590.8	0.75	1					FABRICATOR:				TRUE STEEL FRAMES		TSF_4411
C9075ra	006	947.5	0.75	1					CLIENT REF:	4 REDWOOD ST, ROSTREVOR		Machine Type		ENDUROTRUSS	
C9075ra	007	983.3	0.75	1					CUSTOMER :	BERT FARINA CONSTRUCTION					
C9075ra	010	826.3	0.75	1											
C9075ra	020	708.3	0.75	1											
C9075ra	030	995.9	0.75	1											
C9075ra	040	874.2	0.75	1											

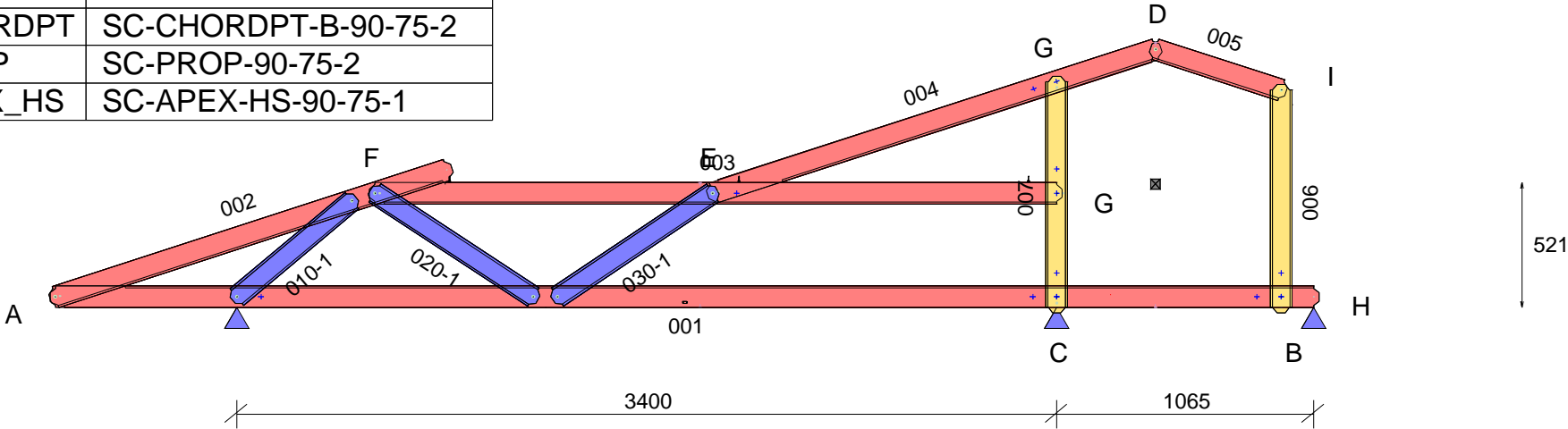
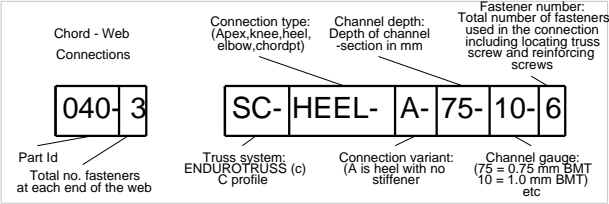
Page 1 of 1

smart: YES flush: NO  
restraint: none

LEFT ← → RIGHT

Connection Table		
A	HEEL	SC-HEEL-A-90-75-2
B	HEEL_HS	SC-HEEL-HS-90-75-1
C	CHORDPT	SC-CHORDPT-S-90-55-2
D	APEX	SC-APEX-A-90-75-1
E	CHORDPT	SC-CHORDPT-A-90-75-2
F	KNEE	SC-KNEE-A-90-75-2
G	CHORDPT	SC-CHORDPT-B-90-75-2
H	PROP	SC-PROP-90-75-2
I	APEX_HS	SC-APEX-HS-90-75-1

ANALYSIS		QTY
Status	PASS	1
Approved BY		



QUALITY CHECK: Top of TOP CHORD to Bottom of BOTTOM CHORD: 521  
Chords placed flange-DOWN, Webs placed flange-UP.  
Min screws per conn: 1 ( Screw locations diagrammatic only. Refer connection sheet for details.)

PARTS LIST (per truss)										ASSEMBLY DETAILS			TRUSS DETAILS		
DESCRIPTION	No.	LEN	MAT	QTY	DESCRIPTION	No.	LEN	MAT	QTY	APEX HEIGHT	LEFT PITCH	RIGHT PITCH	UNCROPPED LENGTH	UNCROPPED HEIGHT	WEIGHT
C9075ra	001	5261.1	0.75	1	SCREW-12-14x20-HEX				6	1102	18 deg	18 deg	5274	1144	18.1
C9075ra	002	1750.6	0.75	1	SCREW-M6.5-12x42-TEK				3	Precamber = 0.0 mm			DETAILER	DETAILED	SCALE
C9075ra	003	2871.3	0.75	1									VANTAGE_DS	23-10-2019	1:30
C9075ra	004	1975.2	0.75	1						FABRICATOR: TRUE STEEL FRAMES			JOB NUMBER		TRUSS
C9075ra	005	590.8	0.75	1									TSF_4411		T104
C9075ra	006	947.5	0.75	1						CLIENT REF: 4 REDWOOD ST, ROSTREVOR			Machine Type		ENDUROTRUSS
C9075ra	007	983.3	0.75	1						CUSTOMER : BERT FARINA CONSTRUCTION					
C9075ra	010	666.7	0.75	1											
C9075ra	020	829.6	0.75	1											
C9075ra	030	818.2	0.75	1											
TRUSSTITE				13											

smart: YES flush: NO  
restraint: none

LEFT ← → RIGHT

Connection Table		
A	HEEL_HS	SC-HEEL-HS-90-75-1
B	PROP	SC-PROP-90-75-2
C	APEX	SC-APEX-A-90-75-1
D	APEX_HS	SC-APEX-HS-90-75-1
E	CHORDPT	SC-CHORDPT-S-90-55-2
F	CHORDPT	SC-CHORDPT-B-90-75-2

ANALYSIS		QTY
Status	PASS	1
Approved BY		

Chord - Web Connections

040-3

Part Id  
Total no. fasteners at each end of the web

Connection type:  
(Apex,knee,heel,elbow,chordpt)

SC-HEEL-A-75-10-6

Truss system:  
ENDUROTRUSS (c)  
C profile

Channel depth:  
Depth of channel -section in mm

75

Connection variant:  
(A is heel with no stiffener)

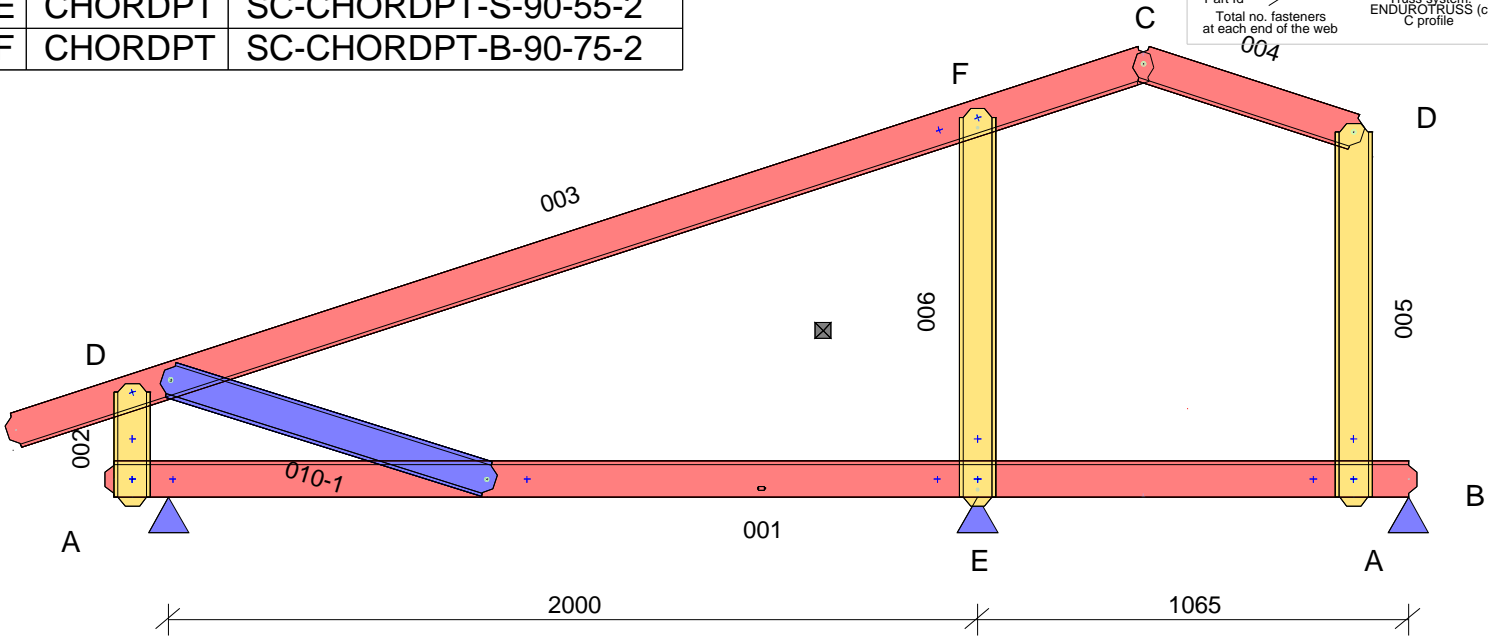
A

Fastener number:  
Total number of fasteners used in the connection including locating truss screw and reinforcing screws

6

Channel gauge:  
(75 = 0.75 mm BMT  
10 = 1.0 mm BMT etc)

10



Chords placed flange-DOWN, Webs placed flange-UP.  
Min screws per conn: 1 ( Screw locations diagrammatic only. Refer connection sheet for details.)

PARTS LIST (per truss)					ASSEMBLY DETAILS			TRUSS DETAILS		
DESCRIPTION	No.	LEN	MAT	QTY	APEX HEIGHT	LEFT PITCH	RIGHT PITCH	UNCROPPED LENGTH	UNCROPPED HEIGHT	WEIGHT
C9075ra	001	3244	0.75	1	1102	18 deg	18 deg	3500	1144	10.8
C9075ra	002	304.1	0.75	1				Precamber = 0.0 mm	DETAILER	DETAILED
C9075ra	003	2975.5	0.75	1	VANTAGE_DS	23-10-2019	1:20			
C9075ra	004	590.8	0.75	1	JOB NUMBER		TRUSS			
C9075ra	005	947.5	0.75	1	FABRICATOR:		TRUE STEEL FRAMES			
C9075ra	006	983.3	0.75	1	CLIENT REF:		4 REDWOOD ST, ROSTREVOR			
C9075ra	010	863.2	0.75	1	CUSTOMER :		BERT FARINA CONSTRUCTION		Page 1 of 1	
TRUSSTITE				9						
SCREW-12-14x20-HEX				2						

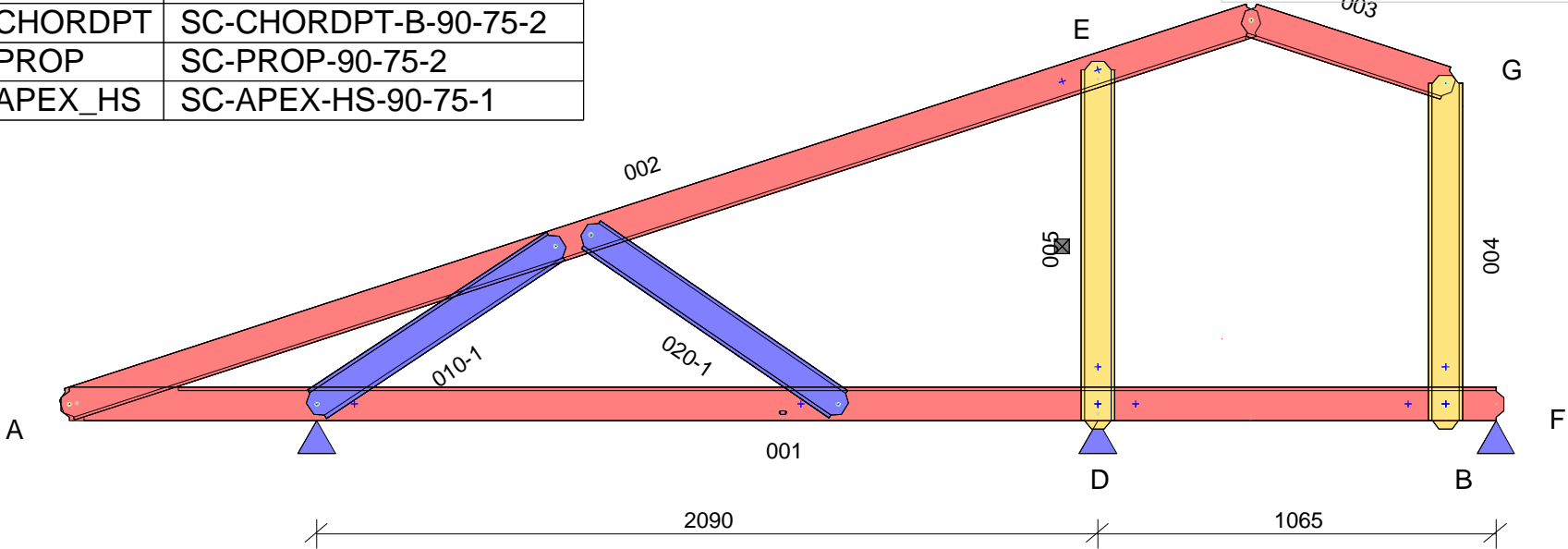
smart: YES flush: NO  
restraint: none

LEFT ← → RIGHT

ANALYSIS		QTY
Status	PASS	1
Approved BY		

Connection Table		
A	HEEL	SC-HEEL-A-90-75-2
B	HEEL_HS	SC-HEEL-HS-90-75-1
C	APEX	SC-APEX-A-90-75-1
D	CHORDPT	SC-CHORDPT-S-90-55-2
E	CHORDPT	SC-CHORDPT-B-90-75-2
F	PROP	SC-PROP-90-75-2
G	APEX_HS	SC-APEX-HS-90-75-1

Chord - Web Connections	Connection type: (Apex,knee,heel, elbow,chordpt)	Channel depth: Depth of channel -section in mm	Fastener number: Total number of fasteners used in the connection including locating truss screw and reinforcing screws
040-3	SC-HEEL-A-75-10-6		
Part Id Total no. fasteners at each end of the web	Truss system: ENDUROTRUSS (c) C profile	Connection variant: (A is heel with no stiffener)	Channel gauge: (75 = 0.75 mm BMT 10 = 1.0 mm BMT) etc



Chords placed flange-DOWN, Webs placed flange-UP.  
Min screws per conn: 1 ( Screw locations diagrammatic only. Refer connection sheet for details.)

PARTS LIST (per truss)					ASSEMBLY DETAILS			TRUSS DETAILS		
DESCRIPTION	No.	LEN	MAT	QTY	APEX HEIGHT	LEFT PITCH	RIGHT PITCH	UNCROPPED LENGTH	UNCROPPED HEIGHT	WEIGHT
C9075ra	001	3861.1	0.75	1	1102	18 deg	18 deg	3874	1144	12.4
C9075ra	002	3368.9	0.75	1				Precamber = 0.0 mm	DETAILER	DETAILED
C9075ra	003	590.8	0.75	1	VANTAGE_DS	23-10-2019	1:20			
C9075ra	004	947.5	0.75	1	JOB NUMBER		TRUSS			
C9075ra	005	983.3	0.75	1	FABRICATOR:		TRUE STEEL FRAMES			
C9075ra	010	809.8	0.75	1	CLIENT REF:		4 REDWOOD ST, ROSTREVOR			
C9075ra	020	845.9	0.75	1	CUSTOMER :		BERT FARINA CONSTRUCTION		Page 1 of 1	
TRUSSTITE				10			TSF_4411			
SCREW-12-14x20-HEX				3			Machine Type		ENDUROTRUSS	

smart: YES flush: NO  
restraint: none

LEFT ← → RIGHT

ANALYSIS

QTY

Status

PASS

Approved BY

1

Chord - Web  
Connections

040-3

Connection type:  
(Apex,knee,heel,  
elbow,chordpt)

SC-HEEL-

Channel depth:  
Depth of channel  
-section in mm

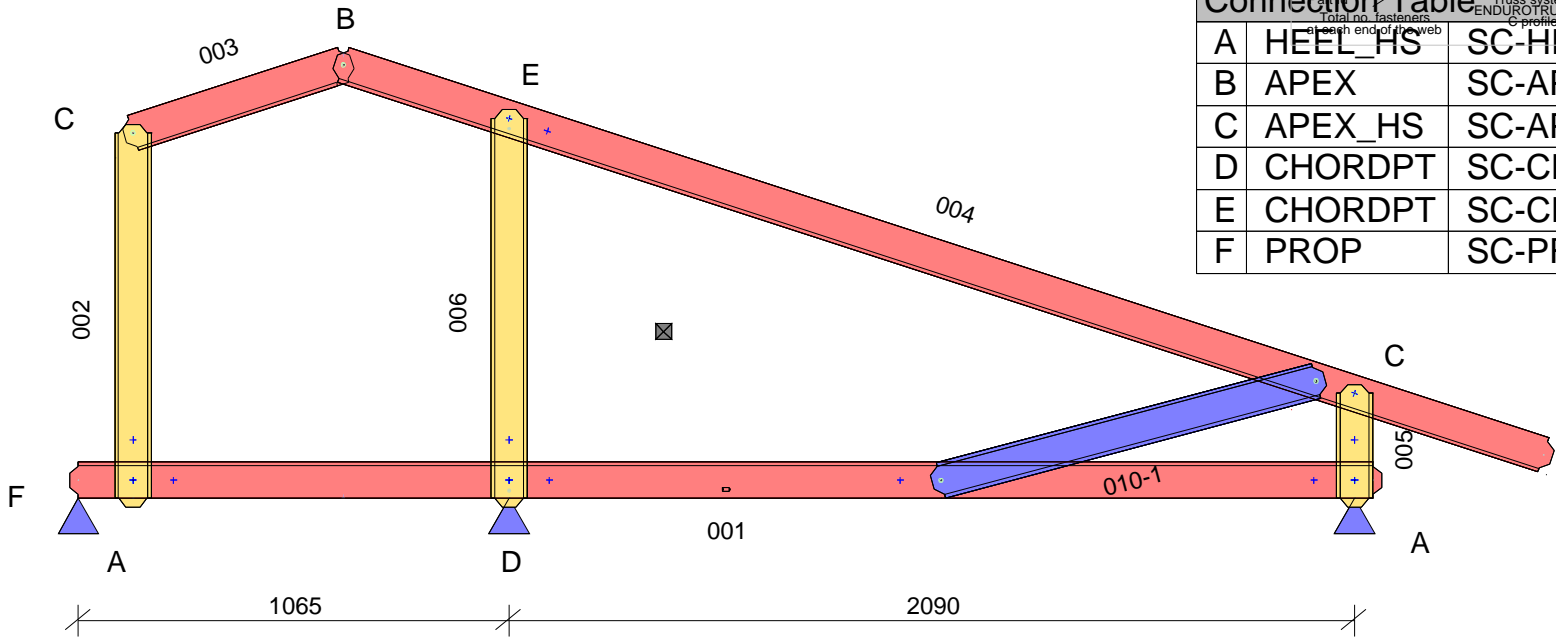
A-75-

Fastener number:  
Total number of fasteners  
used in the connection  
including locating truss  
screw and reinforcing  
screws

10-6

Connection Table

Total no. fasteners at each end of the web		Truss system: ENDUROTRUSS (c) C profile	Connection variant: (A is heel with no stiffener)	Channel gauge: (75 = 0.75 mm BMT 10 = 1.0 mm BMT) etc
A	HEEL_HS	SC-HEEL-HS-90-75-1		
B	APEX	SC-APEX-A-90-75-1		
C	APEX_HS	SC-APEX-HS-90-75-1		
D	CHORDPT	SC-CHORDPT-S-90-55-2		
E	CHORDPT	SC-CHORDPT-B-90-75-2		
F	PROP	SC-PROP-90-75-2		



Chords placed flange-DOWN, Webs placed flange-UP.

Min screws per conn: 1 ( Screw locations diagrammatic only. Refer connection sheet for details.)

PARTS LIST (per truss)

DESCRIPTION	No.	LEN	MAT	QTY
C9075ra	001	3244	0.75	1
C9075ra	002	947.5	0.75	1
C9075ra	003	590.8	0.75	1
C9075ra	004	3163.6	0.75	1
C9075ra	005	304.1	0.75	1
C9075ra	006	983.3	0.75	1
C9075ra	010	1003.6	0.75	1
TRUSSTITE				9
SCREW-12-14x20-HEX				2

ASSEMBLY DETAILS

APEX HEIGHT	LEFT PITCH	RIGHT PITCH
1102	18 deg	18 deg
Precamber = 0.0 mm		
FABRICATOR:	TRUE STEEL FRAMES	
CLIENT REF:	4 REDWOOD ST, ROSTREVOR	
CUSTOMER :	BERT FARINA CONSTRUCTION	

TRUSS DETAILS

UNCROPPED LENGTH	UNCROPPED HEIGHT	WEIGHT
3679	1144	11.1
DETAILER	DETAILED	SCALE
VANTAGE_DS	23-10-2019	1:20
JOB NUMBER		TRUSS
TSF_4411		T107
Machine Type		ENDUROTRUSS

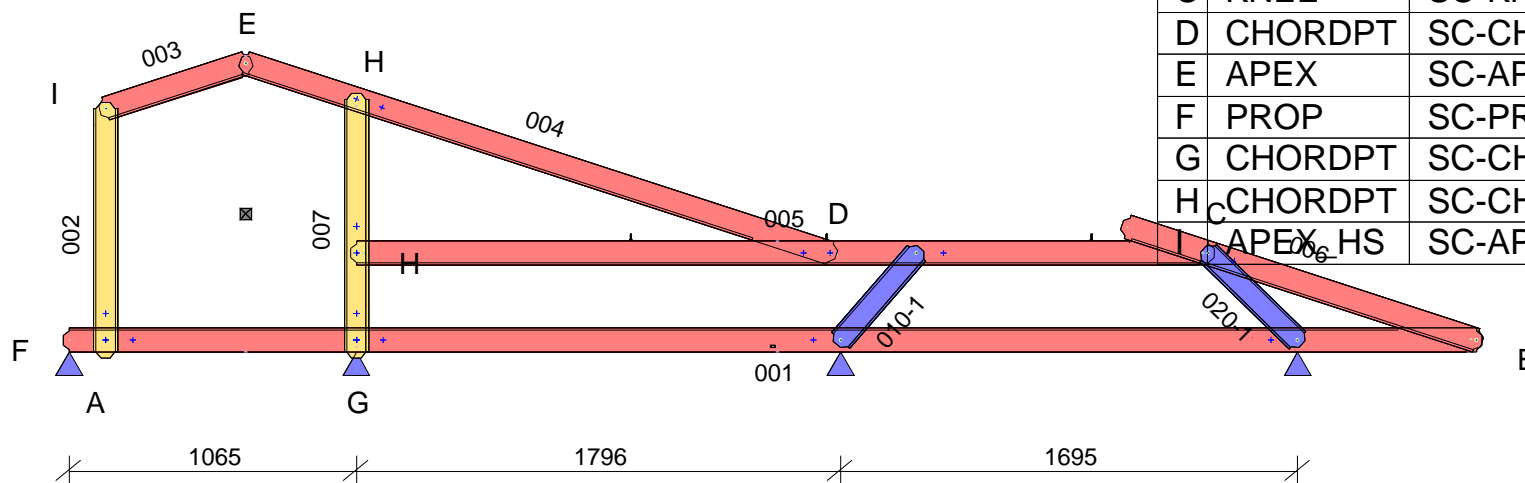


smart: YES    flush: NO  
restraint: none

LEFT  RIGHT

ANALYSIS		QTY
Status	PASS	1
Approved BY		

Chord - Web Connections		Connection type: (Apex,knee,heel, elbow, chordpt)	Channel depth: Depth of channel -section in mm	Fastener number: Total number of fasteners used in the connection including locating truss screw and reinforcing screws
Connection Table				
040-13		SC-HEEL-HS	A-75-10-6	
A	HEEL-HS	SC-HEEL-HS-90-75-1		
B	HEEL	SC-HEEL-A-90-75-2		
C	KNEE	SC-KNEE-A-90-75-2		
D	CHORDPT	SC-CHORDPT-A-90-75-2		
E	APEX	SC-APEX-A-90-75-1		
F	PROP	SC-PROP-90-75-2		
G	CHORDPT	SC-CHORDPT-S-90-55-2		
H	CHORDPT	SC-CHORDPT-B-90-75-2		
I	APEX-HS	SC-APEX-HS-90-75-1		



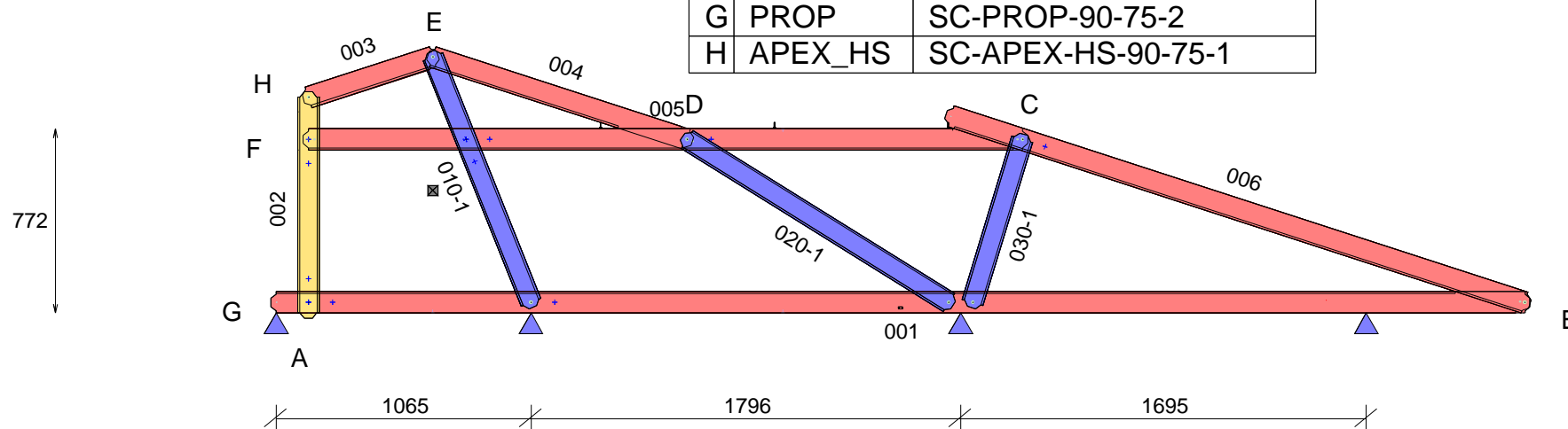
Min screws per conn: 1 ( Screw locations diagrammatic only. Refer connection sheet for details.)

PARTS LIST (per truss)										ASSEMBLY DETAILS			TRUSS DETAILS			
DESCRIPTION	No.	LEN	MAT	QTY	DESCRIPTION	No.	LEN	MAT	QTY	APEX HEIGHT	LEFT PITCH	RIGHT PITCH	UNCROPPED LENGTH	UNCROPPED HEIGHT	WEIGHT	
C9075ra	001	5262.1	0.75	1	SCREW-M6.5-12x42-TEK				3	1102	17.99 deg	18 deg	5275	1144	17	
C9075ra	002	947.5	0.75	1		Precamber = 0.0 mm							DETAILER	DETAILED	SCALE	
C9075ra	003	590.7	0.75	1									VANTAGE_DS	23-10-2019	1:30	
C9075ra	004	2322.9	0.75	1									JOB NUMBER		TRUSS	
C9075ra	005	3202.3	0.75	1									TSF_4411		T108	
C9075ra	006	1403.6	0.75	1												
C9075ra	007	983.2	0.75	1		FABRICATOR:		TRUE STEEL FRAMES								
C9075ra	010	472.6	0.75	1		CLIENT REF:		4 REDWOOD ST, ROSTREVOR		Machine Type		ENDUROTRUSS				
C9075ra	020	507.9	0.75	1		CUSTOMER :		BERT FARINA CONSTRUCTION								
TRUSSTITE				12												
SCREW-12-14x20-HEX				6												
										Page 1 of 1						

LEFT  RIGHT

ANALYSIS		QTY
Status	PASS	1
Approved BY		

Connection Table		
A	HEEL_HS	SC-HEEL-HS-90-75-1
B	HEEL	SC-HEEL-A-90-75-2
C	KNEE	SC-KNEE-A-90-75-2
D	CHORDPT	SC-CHORDPT-A-90-75-2
E	APEX	SC-APEX-A-90-75-1
F	CHORDPT	SC-CHORDPT-B-90-75-2
G	PROP	SC-PROP-90-75-2
H	APEX_HS	SC-APEX-HS-90-75-1



The diagram illustrates the components of two fastener codes:

- Code 040-3:**
  - 040:** Part Id. Total no. fasteners at each end of the web.
  - 3:** Chord - Web Connections.
- Code SC-HEEL-A-75-10-6:**
  - SC:** Truss system: ENDUROTRUSS (c) C profile.
  - HEEL:** Connection type: (Apex,knee,heel, elbow, chordpt).
  - A:** Connection variant: (A is heel with no stiffener).
  - 75:** Channel depth: Depth of channel - section in mm.
  - 10:** Channel gauge: (75 = 0.75 mm BMT 10 = 1.0 mm BMT) etc.
  - 6:** Fastener number: Total number of fasteners used in the connection including lacing truss screw and reinforcing screws.

Min screws per conn: 1 (Screw locations diagrammatic only. Refer connection sheet for details.)

PARTS LIST (per truss)										ASSEMBLY DETAILS			TRUSS DETAILS						
DESCRIPTION	No.	LEN	MAT	QTY	DESCRIPTION	No.	LEN	MAT	QTY	APEX HEIGHT	LEFT PITCH	RIGHT PITCH	UNCROPPED LENGTH	UNCROPPED HEIGHT	WEIGHT				
C9075ra	001	5262.1	0.75	1	SCREW-12-14x20-HEX				4	1102	18 deg	18 deg	5275	1144	18.2				
C9075ra	002	947.5	0.75	1						Precamber = 0.0 mm			DETAILER	DETAILED	SCALE				
C9075ra	003	590.8	0.75	1									VANTAGE_DS	23-10-2019	1:30				
C9075ra	004	1161.3	0.75	1									JOB NUMBER		TRUSS				
C9075ra	005	3027.1	0.75	1									TSF_4411		T109				
C9075ra	006	2565.4	0.75	1						FABRICATOR:	TRUE STEEL FRAMES		Machine Type		ENDUROTRUSS				
C9075ra	010	1150.2	0.75	1						CLIENT REF:	4 REDWOOD ST, ROSTREVOR								
C9075ra	020	1332.6	0.75	1						CUSTOMER :	BERT FARINA CONSTRUCTION								
C9075ra	030	757.1	0.75	1															
TRUSSTITE				11															
SCREW-M6.5-12x42-TEK				3															

Page 1 of 4

smart: YES    flush: NO  
restraint: none

LEFT  RIGHT

ANALYSIS		QTY
Status	PASS	1
Approved BY		

Chord - Web Connections

Connection type: (Apex,knee,heel, elbow, chordpt)

Channel depth: Depth of channel -section in mm

Fastener number: Total number of fasteners used in the connection including locating truss screw and reinforcing screws

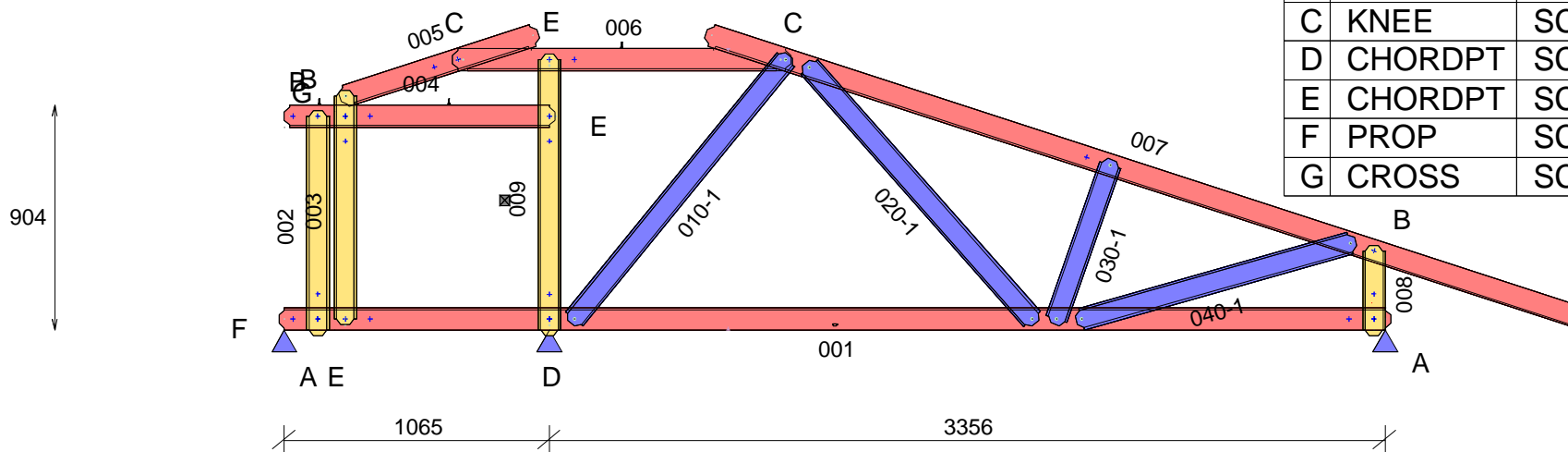
040-3

SC-HEEL-A-75-10-6

### Connection Table

Part id	Truss system	Connection variant	Channel gauge
A HEEL_HS	SC-HEEL-HS-90-75-1	75 ± 0.75 mm BMT 10 ± 0.0 mm BMT etc	
B APEX_HS	SC-APEX-HS-90-75-1		
C KNEE	SC-KNEE-A-90-75-2		
D CHORDPT	SC-CHORDPT-S-90-55-2		
E CHORDPT	SC-CHORDPT-B-90-75-2		
F PROP	SC-PROP-90-75-2		
G CROSS	SC-CROSS-90-75-1		

131



Min screws per conn: 1 (Screw locations diagrammatic only. Refer connection sheet for details.)

PARTS LIST (per truss)										ASSEMBLY DETAILS			TRUSS DETAILS		
DESCRIPTION	No.	LEN	MAT	QTY	DESCRIPTION	No.	LEN	MAT	QTY	APEX HEIGHT	LEFT PITCH	RIGHT PITCH	UNCROPPED LENGTH	UNCROPPED HEIGHT	WEIGHT
C9075ra	001	4465	0.75	1	C9075ra	030	698.1	0.75	1	N/A	17.87 deg	18 deg	5233	1255	21.1
C9075ra	002	903	0.75	1	C9075ra	040	1165.2	0.75	1				Precamber = 0.0 mm	DETAILER	DETAILED
C9075ra	003	939.3	0.75	1	TRUSSTITE				19	VANTAGE_DS	23-10-2019	1:30			
C9075ra	004	1086.8	0.75	1	SCREW-12-14x20-HEX				6	JOB NUMBER	TRUSS				
C9075ra	005	835.1	0.75	1	SCREW-M6.5-12x42-TEK				3	FABRICATOR:	TRUE STEEL FRAMES	TSF_4411		T110	
C9075ra	006	1359.2	0.75	1						CLIENT REF:	4 REDWOOD ST, ROSTREVOR	Machine Type			ENDUROTRUSS
C9075ra	007	3683.2	0.75	1						CUSTOMER :	BERT FARINA CONSTRUCTION				
C9075ra	008	362.6	0.75	1											
C9075ra	009	1130.4	0.75	1											
C9075ra	010	1387.2	0.75	1											
C9075ra	020	1392.9	0.75	1											

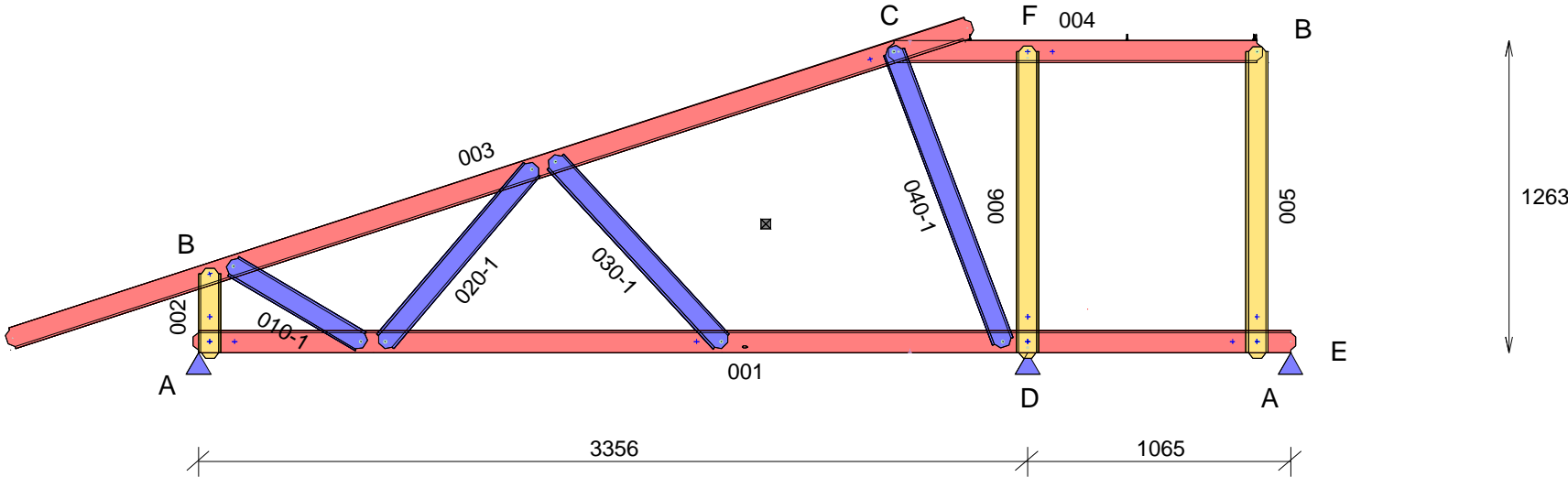
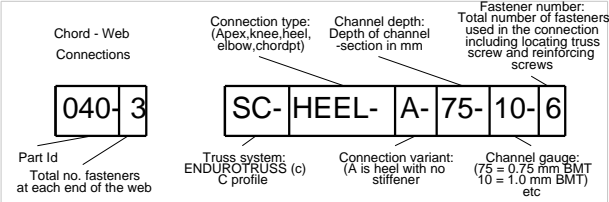
Page 1 of 1

smart: YES flush: NO  
restraint: none

LEFT ← → RIGHT

Connection Table		
A	HEEL_HS	SC-HEEL-HS-90-75-1
B	APEX_HS	SC-APEX-HS-90-75-1
C	KNEE	SC-KNEE-A-90-75-2
D	CHORDPT	SC-CHORDPT-S-90-55-2
E	PROP	SC-PROP-90-75-2
F	CHORDPT	SC-CHORDPT-B-90-75-2

ANALYSIS		QTY
Status	PASS	1
Approved BY		



QUALITY CHECK: Top of TOP CHORD to Bottom of BOTTOM CHORD: 1263  
Chords placed flange-DOWN, Webs placed flange-UP.  
Min screws per conn: 1 ( Screw locations diagrammatic only. Refer connection sheet for details.)

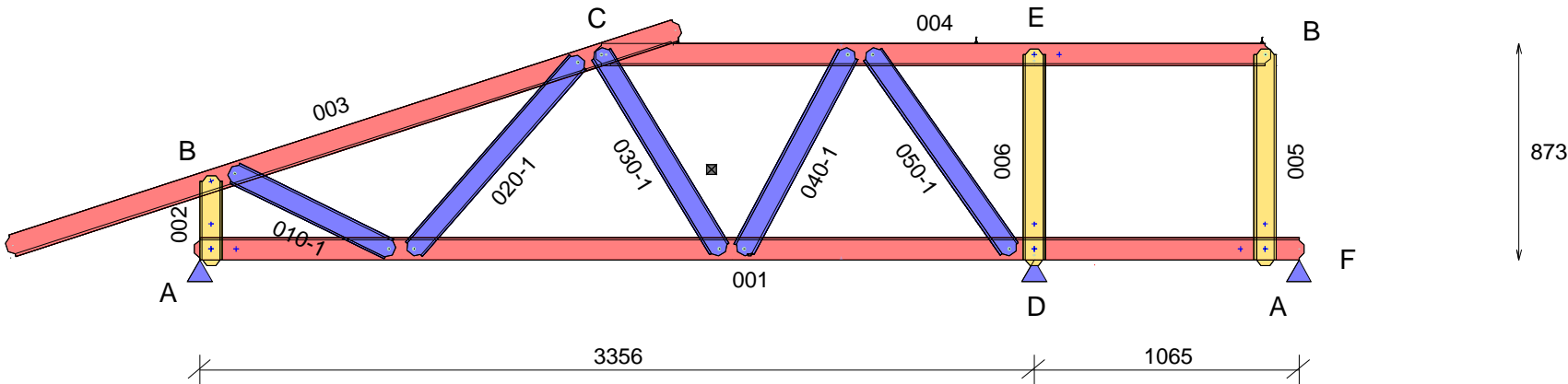
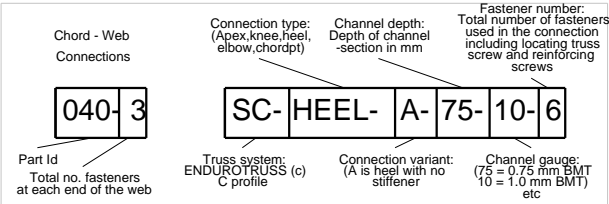
PARTS LIST (per truss)										ASSEMBLY DETAILS			TRUSS DETAILS			
DESCRIPTION	No.	LEN	MAT	QTY	DESCRIPTION	No.	LEN	MAT	QTY	APEX HEIGHT	LEFT PITCH	RIGHT PITCH	UNCROPPED LENGTH	UNCROPPED HEIGHT	WEIGHT	
C9075ra	001	4465	0.75	1	SCREW-M6.5-12x42-TEK				4	N/A	18 deg	-	5233	1387	18.4	
C9075ra	002	362.6	0.75	1	SCREW-12-14x20-HEX				3							
C9075ra	003	4109.9	0.75	1						Precamber = 0.0 mm			DETAILER	DETAILED	SCALE	
C9075ra	004	1516.1	0.75	1									VANTAGE_DS	23-10-2019	1:30	
C9075ra	005	1262	0.75	1									JOB NUMBER		TRUSS	
C9075ra	006	1262.2	0.75	1									TSF_4411		T111	
C9075ra	010	642.4	0.75	1									Machine Type		ENDUROTRUSS	
C9075ra	020	959.9	0.75	1						FABRICATOR:	TRUE STEEL FRAMES					
C9075ra	030	1034.6	0.75	1						CLIENT REF:	4 REDWOOD ST, ROSTREVOR		Machine Type			
C9075ra	040	1297.9	0.75	1						CUSTOMER :	BERT FARINA CONSTRUCTION					
TRUSSTITE				14						Page 1 of 1						

smart: YES flush: NO  
restraint: none

LEFT ← → RIGHT

Connection Table		
A	HEEL_HS	SC-HEEL-HS-90-75-1
B	APEX_HS	SC-APEX-HS-90-75-1
C	KNEE	SC-KNEE-A-90-75-2
D	CHORDPT	SC-CHORDPT-S-90-55-2
E	CHORDPT	SC-CHORDPT-B-90-75-2
F	PROP	SC-PROP-90-75-2

ANALYSIS		QTY
Status	PASS	1
Approved BY		



QUALITY CHECK: Top of TOP CHORD to Bottom of BOTTOM CHORD: 873  
Chords placed flange-DOWN, Webs placed flange-UP.  
Min screws per conn: 1 ( Screw locations diagrammatic only. Refer connection sheet for details.)

PARTS LIST (per truss)										ASSEMBLY DETAILS			TRUSS DETAILS		
DESCRIPTION	No.	LEN	MAT	QTY	DESCRIPTION	No.	LEN	MAT	QTY	APEX HEIGHT	LEFT PITCH	RIGHT PITCH	UNCROPPED LENGTH	UNCROPPED HEIGHT	WEIGHT
C9075ra	001	4465	0.75	1	TRUSSTITE				16	N/A	18 deg	-	5233	997	18.3
C9075ra	002	362.6	0.75	1	SCREW-M6.5-12x42-TEK				3				Precamber = 0.0 mm	DETAILER	DETAILED
C9075ra	003	2848.2	0.75	1	SCREW-12-14x20-HEX				3	VANTAGE_DS	23-10-2019	1:30			
C9075ra	004	2716.1	0.75	1						JOB NUMBER		TRUSS			
C9075ra	005	872	0.75	1						TSF_4411		T112			
C9075ra	006	872.1	0.75	1						Machine Type		ENDUROTRUSS			
C9075ra	010	735.1	0.75	1						BERT FARINA CONSTRUCTION					
C9075ra	020	1043.8	0.75	1											
C9075ra	030	960	0.75	1											
C9075ra	040	931.6	0.75	1											
C9075ra	050	1001	0.75	1											
										CUSTOMER :					

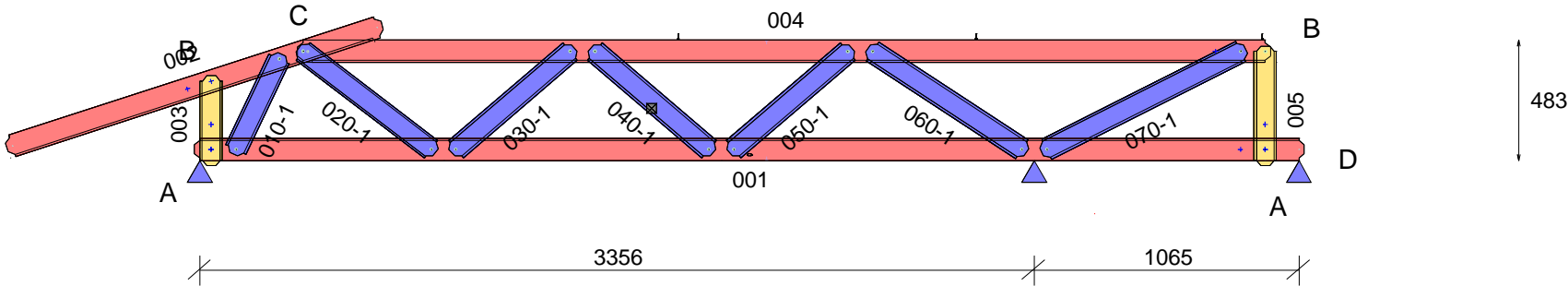
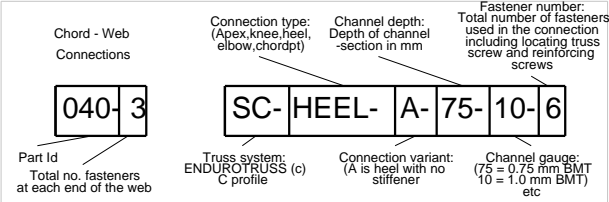
Page 1 of 1

smart: YES flush: NO  
restraint: none

LEFT ← → RIGHT

Connection Table		
A	HEEL_HS	SC-HEEL-HS-90-75-1
B	APEX_HS	SC-APEX-HS-90-75-1
C	KNEE	SC-KNEE-A-90-75-2
D	PROP	SC-PROP-90-75-2

ANALYSIS		QTY
Status	PASS	1
Approved BY		



QUALITY CHECK: Top of TOP CHORD to Bottom of BOTTOM CHORD: 483  
Chords placed flange-DOWN, Webs placed flange-UP.  
Min screws per conn: 1 ( Screw locations diagrammatic only. Refer connection sheet for details.)

PARTS LIST (per truss)										ASSEMBLY DETAILS			TRUSS DETAILS			
DESCRIPTION	No.	LEN	MAT	QTY	DESCRIPTION	No.	LEN	MAT	QTY	APEX HEIGHT	LEFT PITCH	RIGHT PITCH	UNCROPPED LENGTH	UNCROPPED HEIGHT	WEIGHT	
C9075ra	001	4465	0.75	1	C9075ra	070	917.3	0.75	1	N/A	18 deg	-	5233	607	17	
C9075ra	002	1586.5	0.75	1	TRUSSTITE				18	Precamber = 0.0 mm			DETAILER	DETAILED	SCALE	
C9075ra	003	362.6	0.75	1	SCREW-M6.5-12x42-TEK				3				VANTAGE_DS	23-10-2019	1:30	
C9075ra	004	3916.1	0.75	1	SCREW-12-14x20-HEX				1				JOB NUMBER		TRUSS	
C9075ra	005	482	0.75	1					FABRICATOR:				TRUE STEEL FRAMES		TSF_4411	
C9075ra	010	446.1	0.75	1					CLIENT REF:		4 REDWOOD ST, ROSTREVOR		Machine Type		ENDUROTRUSS	
C9075ra	020	692.8	0.75	1					CUSTOMER :		BERT FARINA CONSTRUCTION		Page 1 of 1			
C9075ra	030	648.3	0.75	1												
C9075ra	040	648.3	0.75	1												
C9075ra	050	648.2	0.75	1												
C9075ra	060	761.4	0.75	1												