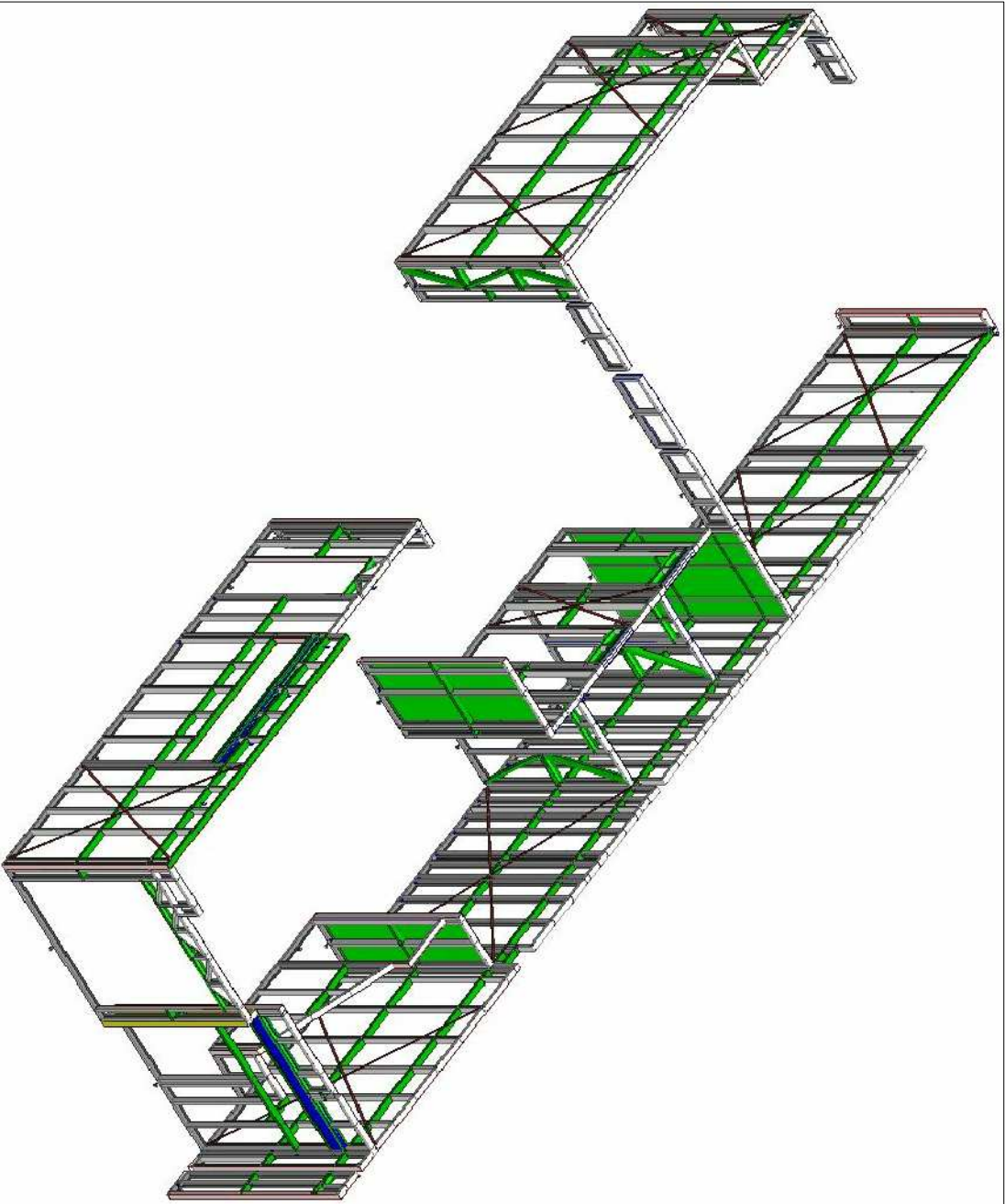

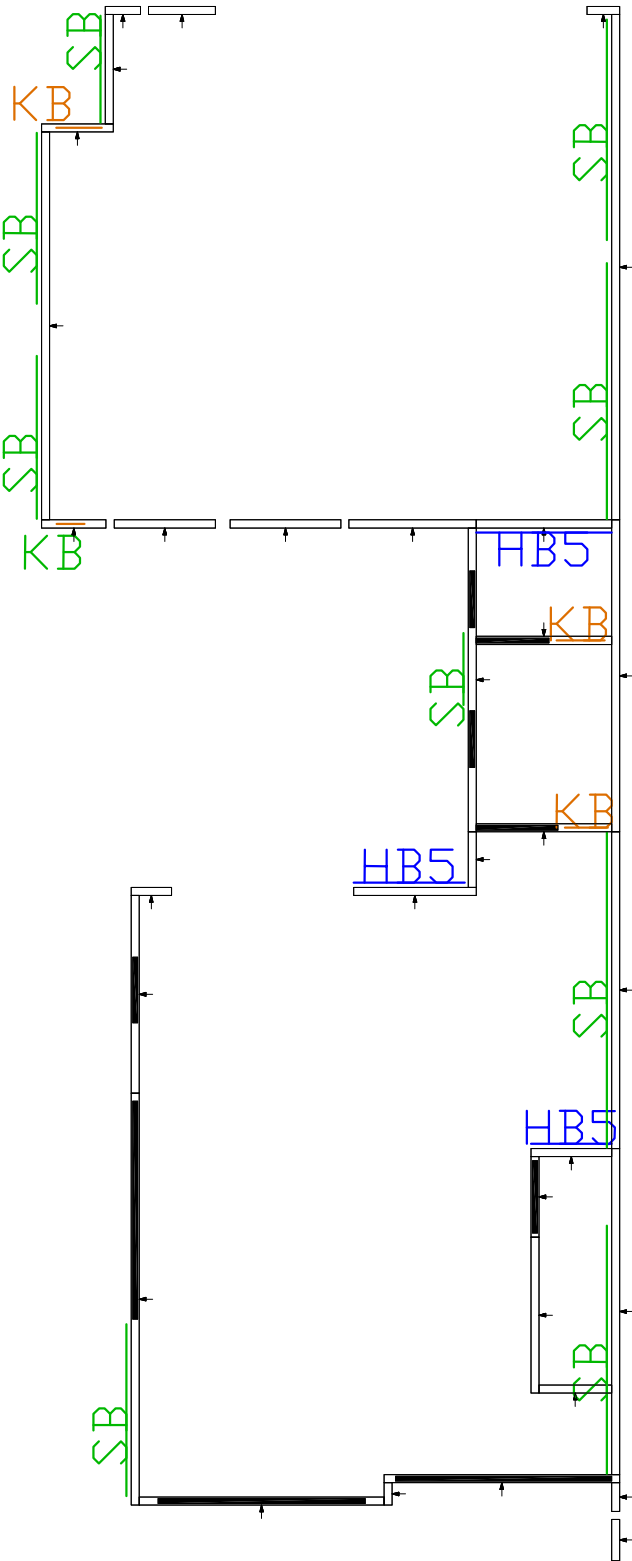


STRUCTURAL STEEL TO BE SUPPLIED BY BUILDER;
REFER TO ENGINEERS SPECIFICATION

ADDITIONAL NOTES:
-ARROWS SHOW THE DIRECTION THE WALLS ARE VIEWED FROM,
-CHALK OUT SLAB USING ARCHITECTURAL DRAWINGS NOT TSF LAYOUTS



NO.	DATE:	BY:	REVISION:	<div><div>Steel, the true way to build!</div><div>31 HEWITTS RD, EDINBURGH NORTH S113 SITE ENQUIRIES - Ph: (08) 8252 0046</div></div>	<div><div>WALL FRAME LAYOUT</div><div>GROUND FLOOR PLAN</div><div>DW2 #4 Redwood St, Rostrevor TSF_4411 - BERT FARINA CONSTRUCTIONS</div></div>	<div><div>WINDSPEED:</div><div>N1</div></div> <div><div>WALL THICKNESS:</div><div>90mmmm</div></div> <div><div>L.B.W HEIGHT:</div><div>2745mm</div></div> <div><div>N.L.B.W HEIGHT:</div><div>2710mm</div></div> <div><div>EXTERNAL CLADDING:</div><div>Refer Elevations</div></div>	<div><div>DETAILED BY:</div><div>VANTAGE</div></div> <div><div>CHECKED:</div><div>Rebecca</div></div>
1							
2							
3							
4							



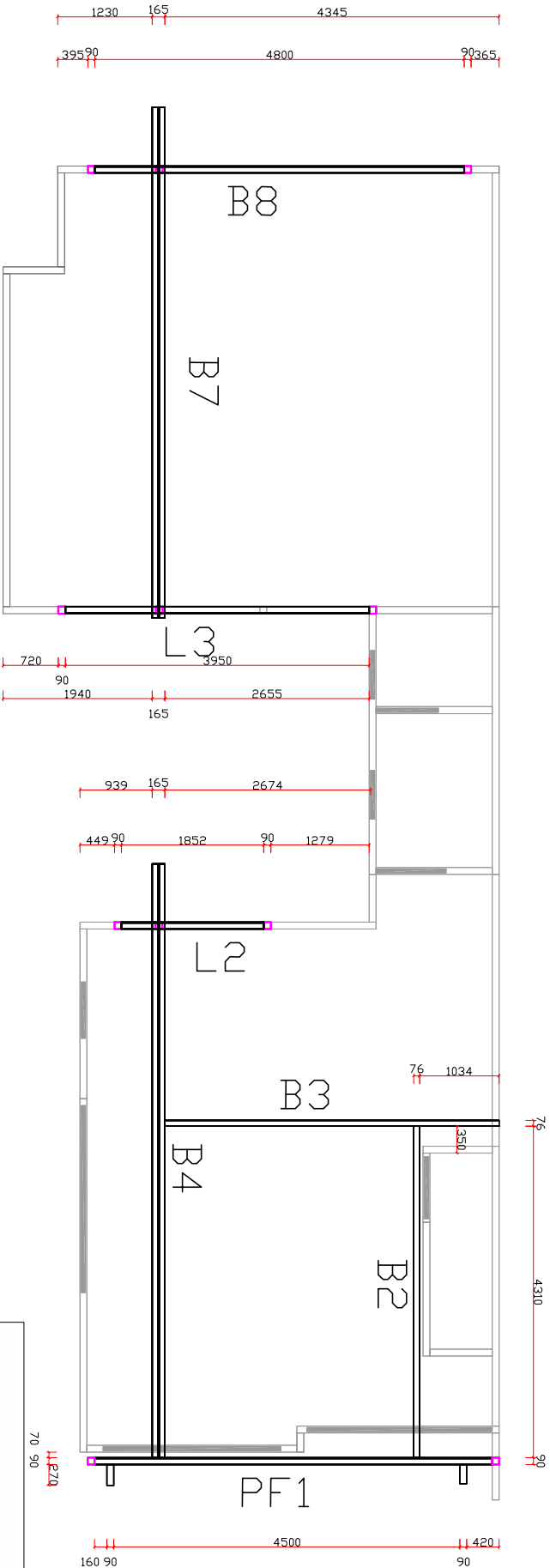
SHEET LEGEND:

SB = 1.0x30x550 STRAP BRACE ON FRAME FACE
KB = 0.75 GAUGE K-BRACE WITHIN FRAME
HB = 5mm HARDIBRACE FOR SHEET BRACING

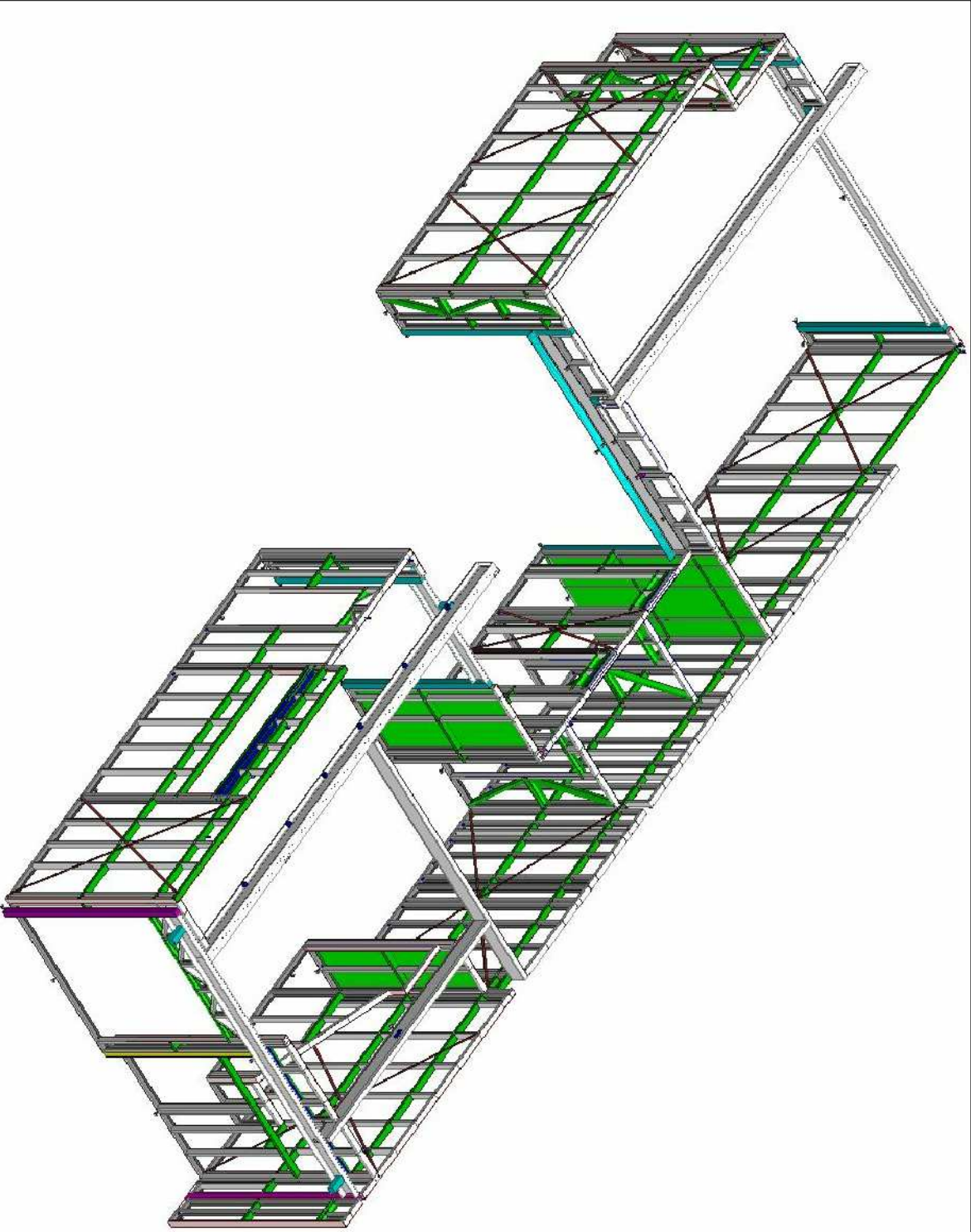
ADDITIONAL NOTES:


-ARROWS SHOW THE DIRECTION THE WALLS ARE VIEWED FROM.
-STRAP BRACING IS TO BE INSTALLED ON THE SIDE OF A FRAME HIGHLIGHTED
-MINIMUM BRACING REQUIREMENTS PROVIDED BY AUSTRUCT ENG.

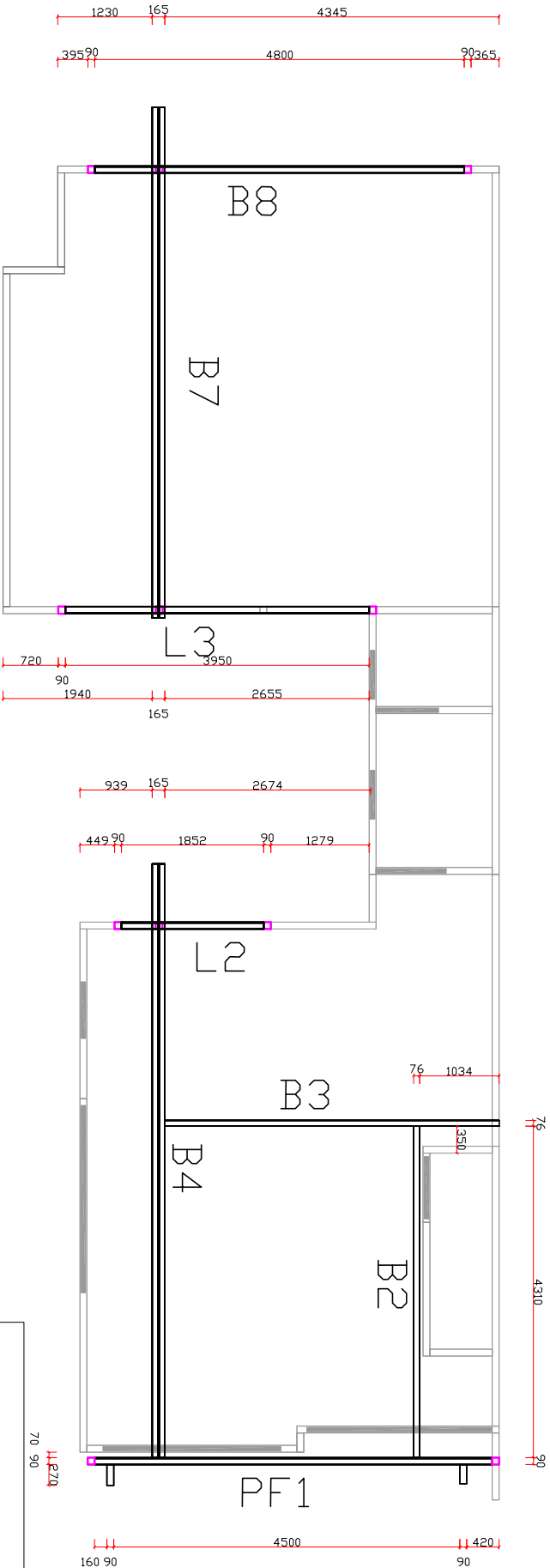
NO.	DATE:	BY:	REVISION:	<div><div><div><div><div></div></div><div>TRUE STEEL FRAMES</div></div><div><div>Steel, the true way to build!</div></div></div><div>31 HEWITTSOON RD, EDINBURGH NORTH S113 SITE ENQUIRIES - Ph: (08) 8252 0046</div></div>			
1							
2							
3							
4							
WALL BRACING LAYOUT GROUND FLOOR PLAN				WINDSPEED:		N1	DETAILED BY: VANTAGE
				WALL THICKNESS:		90mmmm	
DW2 #4 Redwood St, Rostrevor TSF_4411 - BERT FARINA CONSTRCTIONS				L.B.W HEIGHT:		2745mm	CHECKED: Rebecca
				N.L.B.W HEIGHT:		2710mm	
				EXTERNAL CLADDING:		Refer Elevations	



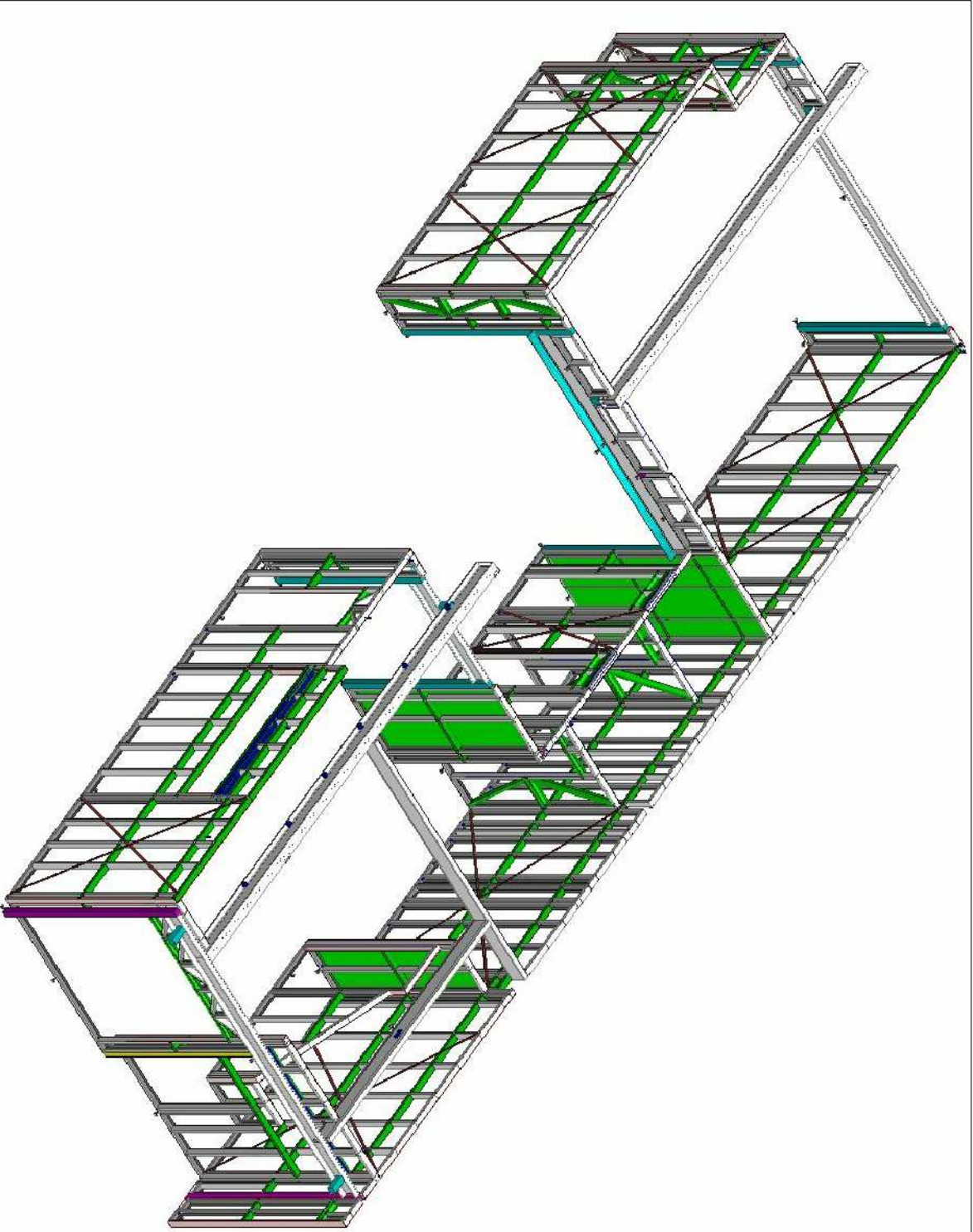
STRUCTURAL STEEL TO BE SUPPLIED BY BUILDER:
REFER TO ENGINEERS SPECIFICATION FOR SIZING




NO.	DATE:	BY:	REVISION:	<div><p>Steel, the true way to build!</p><p>31 HEWITTS RD, EDINBURGH NORTH S113 SITE ENQUIRIES - Ph: (08) 8252 0046</p></div>	<div><div>FLOOR BEAM LAYOUT</div><div><div>DW2 #4 Redwood St, Rostrevor</div><div>TSF_4411 - BERT FARINA CONSTRUCTIONS</div></div><div><div>WINDSPEED:</div><div>ROOF TYPE:</div><div>ROOF PITCH:</div><div>SECTION TYPE:</div><div>ROOF FEATURES:</div></div><div><div>N1</div><div>HIP + VALLEY</div><div>25 deg</div><div>90 C</div><div>CHECKED: Rebecca</div></div></div>
1					
2					
3					
4					



STRUCTURAL STEEL TO BE SUPPLIED BY BUILDER:
REFER TO ENGINEERS SPECIFICATION FOR SIZING

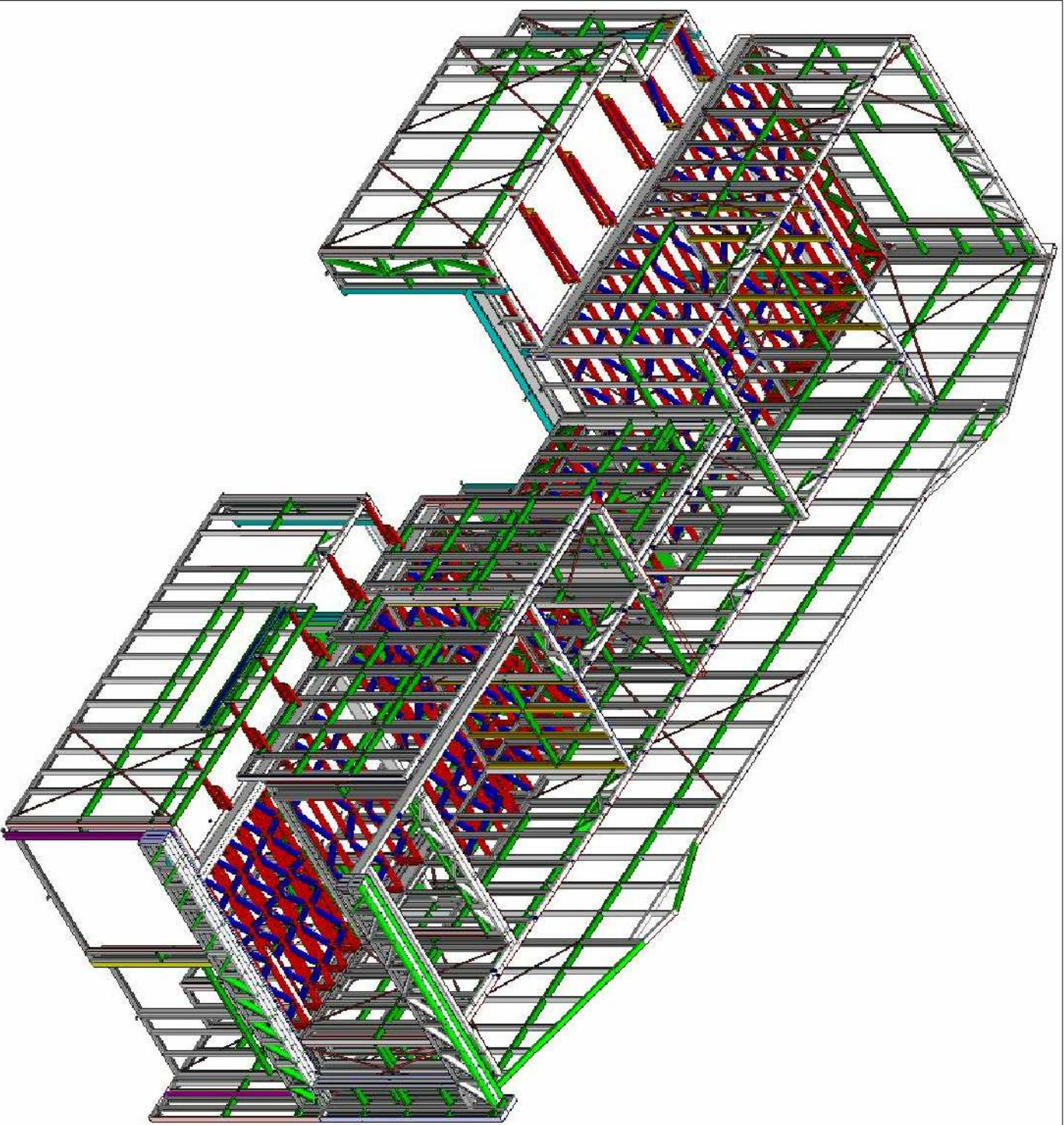
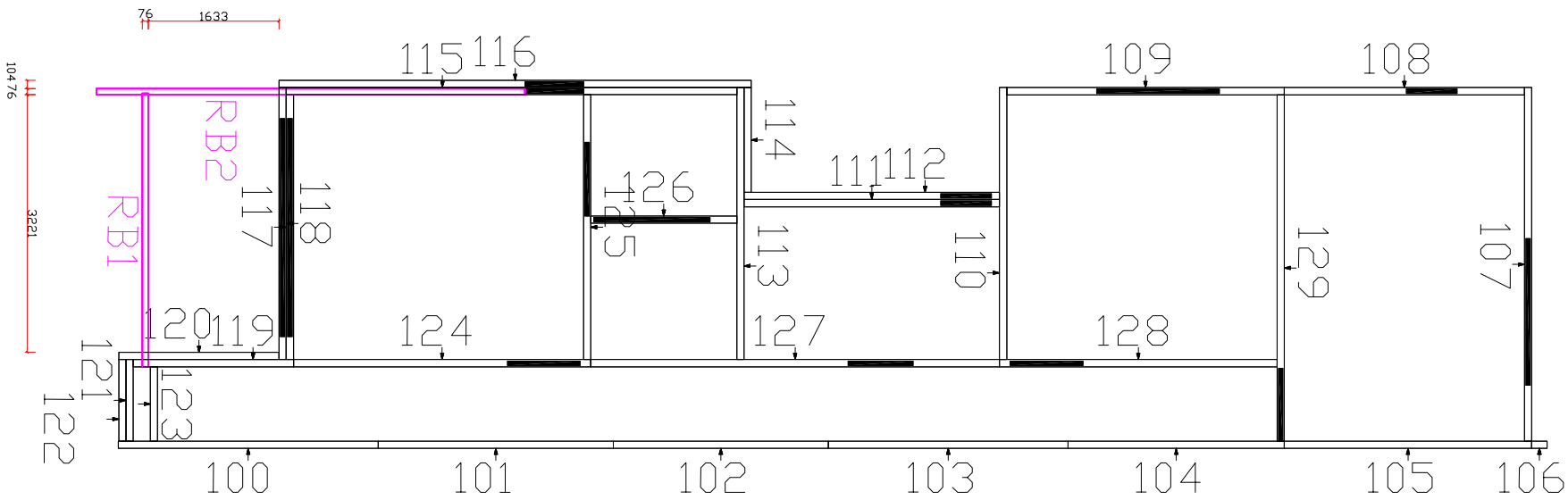



NO.	DATE:	BY:	REVISION:	<div><p><i>Steel, the true way to build!</i></p><p>TRUE STEEL FRAMES</p></div> <div>31 HEWITTS RD, EDINBURGH NORTH S113 SITE ENQUIRIES - Ph: (08) 8252 0046</div>				
1								
2								
3								
4								
FLOOR BEAM LAYOUT				D/W2 #4 Redwood St, Rostrevor TSF_4411 - BERT FARINA CONSTRUCTION				
				WINDSPEED: N1			DETAILED BY: VANTAGE	
				ROOF TYPE: HIP + VALLEY				
				ROOF PITCH: 25 deg			CHECKED: Rebecca	
				SECTION TYPE: 90 C				
ROOF FEATURES:								

STRUCTURAL STEEL TO BE SUPPLIED BY BUILDER:
REFER TO ENGINEERS SPECIFICATION

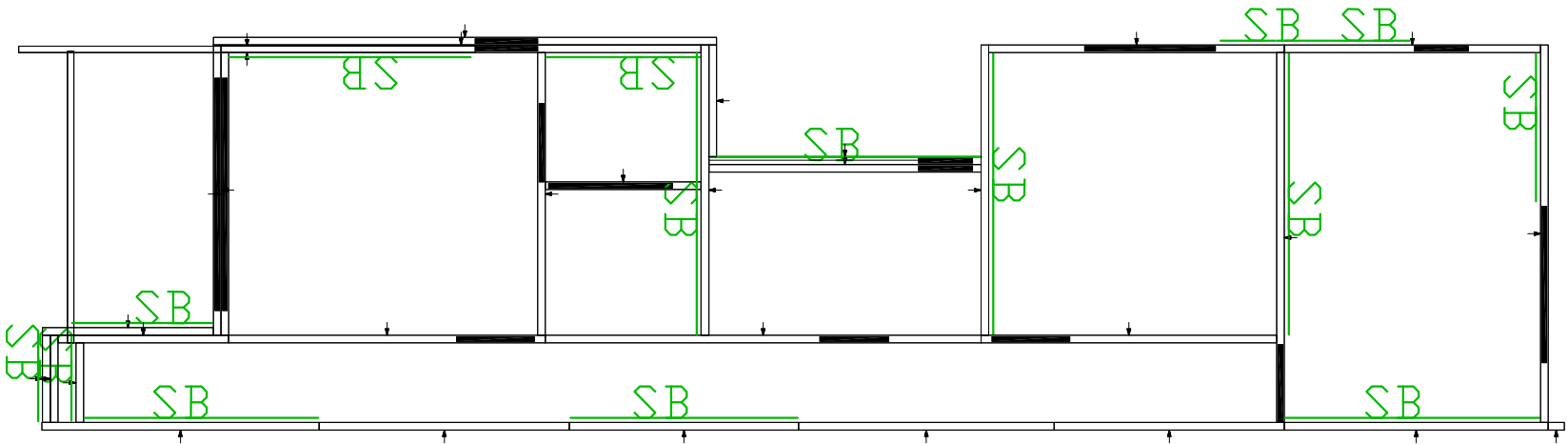
ADDITIONAL NOTES:

- ARROWS SHOW THE DIRECTION THE WALLS ARE VIEWED FROM
- CHALK OUT SLAB USING ARCHITECTURAL DRAWINGS NOT TSF LAYOUTS



NO.	DATE:	BY:	REVISION:	<div><p>TRUE STEEL FRAMES <i>Steel, the true way to build!</i></p><p>31 HEWITTS RD, EDINBURGH NORTH S113 SITE ENQUIRIES - Ph: (08) 8252 0046</p></div>
1				
2				
3				
4				

WALL FRAME LAYOUT		WINDSPEED:	N1	DETAILED BY: VANTAGE	
FIRST FLOOR PLAN		WALL THICKNESS:	90mm		
DW2 #4 Redwood St, Rostrevor		L.B.W HEIGHT:	2745mm		CHECKED: Rebecca
TSF_4411 - BERT FARINA CONSTRUCTIONS		N.L.B.W HEIGHT:	2710mm		
		EXTERNAL CLADDING:	Refer Elevations		



SHEET LEGEND:

SB = 10x30x550 STRAP BRACE ON FRAME FACE
KB = 0.75 GAUGE K-BRACE WITHIN FRAME
HB = 5mm HARDIBRACE FOR SHEET BRACING

ADDITIONAL NOTES:

- ARROWS SHOW THE DIRECTION THE WALLS ARE VIEWED FROM
- STRAP BRACING IS TO BE INSTALLED ON THE SIDE OF A FRAME HIGHLIGHTED
- MINIMUM BRACING REQUIREMENTS PROVIDED BY AUSTRUCT ENG.

NO.	DATE:	BY:	REVISION:			
1				<div><div><div><div></div><div>TRUE STEEL FRAMES</div><div>Steel, the true way to build!</div></div><div>31 HEWITTS RD, EDINBURGH NORTH S113 SITE ENQUIRIES - Ph: (08) 8252 0046</div></div></div>		
2						
3						
4						

WALL BRACING LAYOUT			WINDSPEED:	N1	DETAILED BY:
FIRST FLOOR PLAN			WALL THICKNESS:	90mm	VANTAGE
DW2 #4 Redwood St, Rostrevor			L.B.W HEIGHT:	2745mm	CHECKED: Rebecca
TSF_4411 - BERT FARINA CONSTRUCTIONS			N.L.B.W HEIGHT:	2710mm	
			EXTERNAL CLADDING:	Refer Elevations	