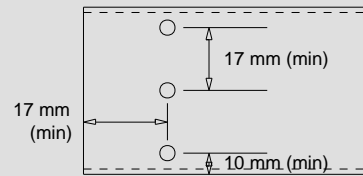
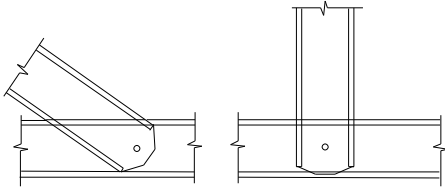


# Truss connections used in job: TSF\_4410 (Sheet 1 of 2)

Minimum screw-spacing = 17 mm  
 Minimum distance from end of part = 17 mm  
 Minimum distance from edge of part = 10 mm

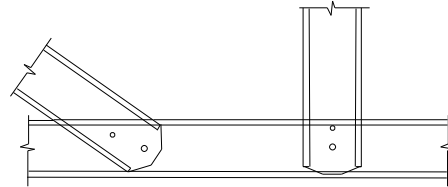


SC-WEB-CHORD-1



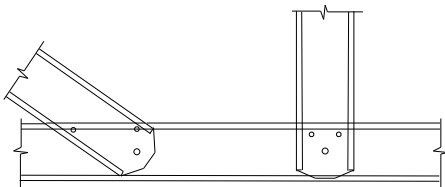
1x TRUSSTITE

SC-WEB-CHORD-2



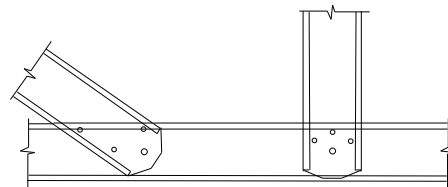
1x TRUSSTITE + 1 x 12-14 x 20 HEX SCREW  
 (16MM MIN EDGE DISTANCE)

SC-WEB-CHORD-3



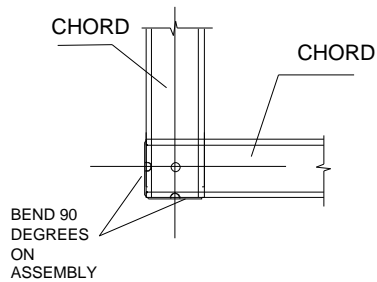
1x TRUSSTITE + 2 x 12-14 x 20 HEX SCREW  
 (16MM MIN EDGE DISTANCE)

SC-WEB-CHORD-4



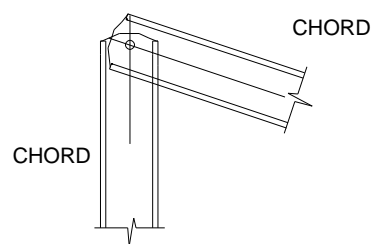
1x TRUSSTITE + 3 x 12-14 x 20 HEX SCREW  
 (16MM MIN EDGE DISTANCE)

SC-HEEL-HS-90-75-1



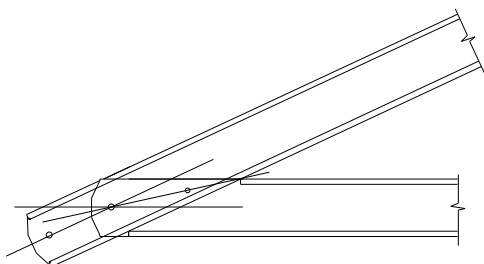
1 x TRUSSTITE

SC-APEX-HS-90-75-1



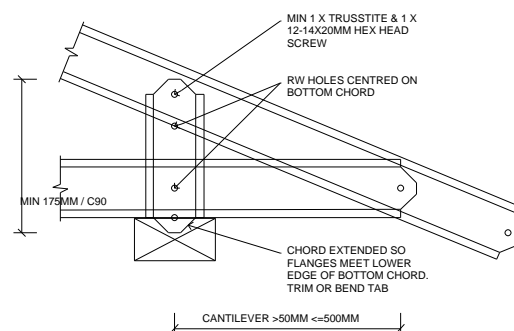
1 x TRUSSTITE

SC-HEEL-A-90-75-2



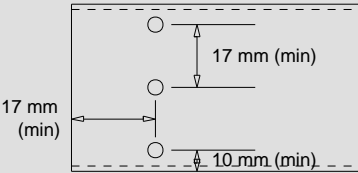
TRUSSTITE + 1X12-14X20 HEX SCREW

SC-CHORDPT-S-90-55-2

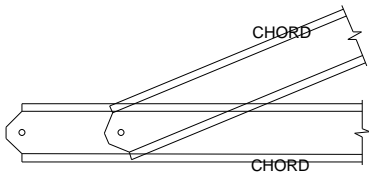


# Truss connections used in job: TSF\_4410 (Sheet 2 of 2)

Minimum screw-spacing = 17 mm  
Minimum distance from end of part = 17 mm  
Minimum distance from edge of part = 10 mm

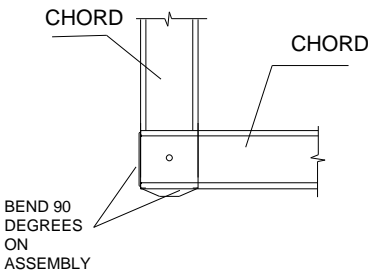


SC-CHORDPT-B-90-75-2



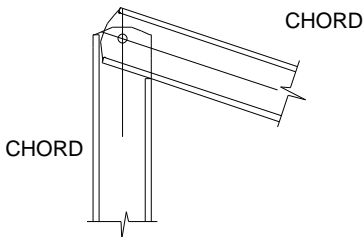
TRUSSTITE + 1 X 12-14X20 HEX SCREW

SC-HEEL-HS-F-90-75-1



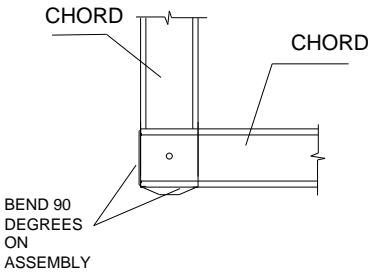
1 x TRUSSTITE

SC-APEX-HS-F-90-75-1



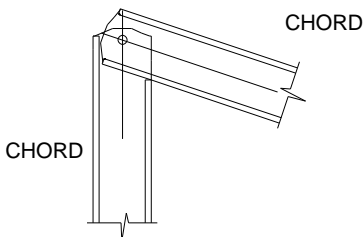
1 x TRUSSTITE

SC-HEEL-HS-F-90-10-1



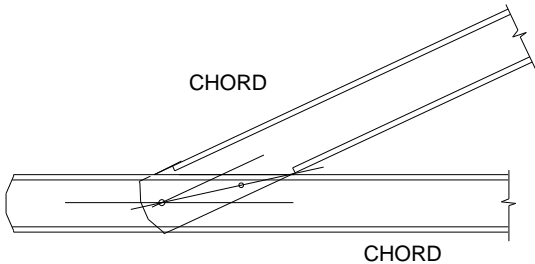
1 x TRUSSTITE

SC-APEX-HS-F-90-10-1



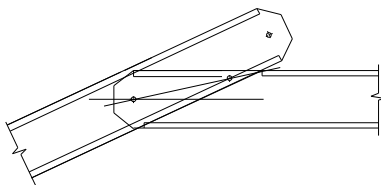
1 x TRUSSTITE

SC-CHORDPT-A-90-10-2

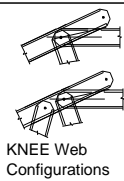


TRUSSTITE + 1X12-14X20 HEX SCREWS

SC-KNEE-A-90-75-2

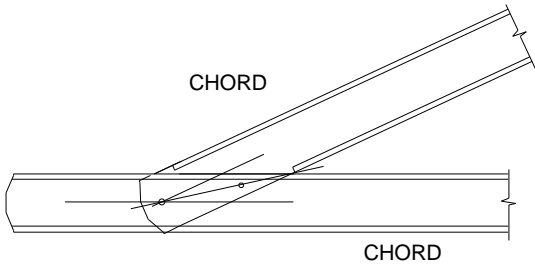


TRUSSTITE + 1X12-14X20 HEX SCREW



KNEE Web Configurations

SC-CHORDPT-A-90-75-2



TRUSSTITE + 1X12-14X20 HEX SCREWS

smart: YES flush: NO  
restraint: none

LEFT ← → RIGHT

Connection Table		
A	HEEL	SC-HEEL-A-90-75-2
B	HEEL_HS	SC-HEEL-HS-90-75-1
C	APEX_HS	SC-APEX-HS-90-75-1
D	KNEE	SC-KNEE-A-90-75-2

ANALYSIS		QTY
Status	PASS	1
Approved BY		

Chord - Web Connections

040-3

Part Id  
Total no. fasteners at each end of the web

Connection type:  
(Apex,knee,heel,elbow,chordpt)

SC-HEEL-A-75-10-6

Truss system:  
ENDUROTRUSS (c)  
C profile

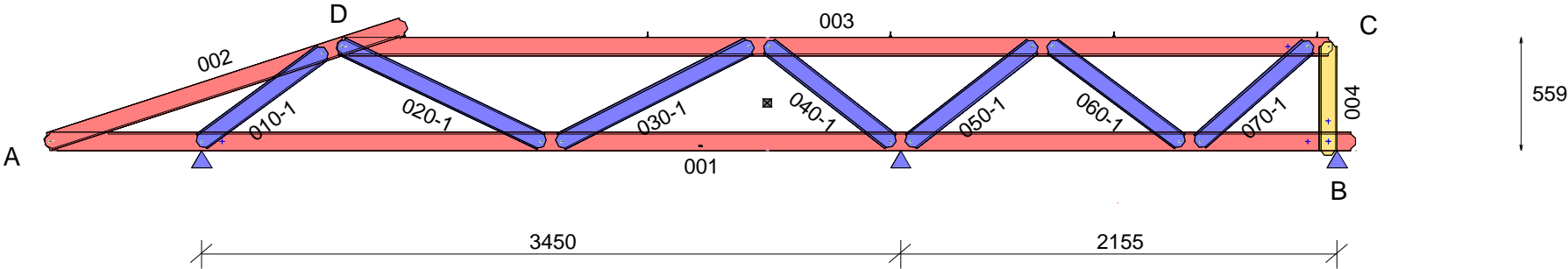
Channel depth:  
Depth of channel -section in mm

A

Connection variant:  
(A is heel with no stiffener)

Fastener number:  
Total number of fasteners used in the connection including locating truss screw and reinforcing screws

75 = 0.75 mm BMT  
10 = 1.0 mm BMT etc



QUALITY CHECK: Top of TOP CHORD to Bottom of BOTTOM CHORD: 559  
Chords placed flange-DOWN, Webs placed flange-UP.  
Min screws per conn: 1 ( Screw locations diagrammatic only. Refer connection sheet for details.)

PARTS LIST (per truss)										ASSEMBLY DETAILS			TRUSS DETAILS		
DESCRIPTION	No.	LEN	MAT	QTY	DESCRIPTION	No.	LEN	MAT	QTY	APEX HEIGHT	LEFT PITCH	RIGHT PITCH	UNCROPPED LENGTH	UNCROPPED HEIGHT	WEIGHT
C9075ra	001	6469.1	0.75	1	TRUSSTITE				17	N/A	18 deg	-	6482	682	21.7
C9075ra	002	1874.6	0.75	1	SCREW-M6.5-12x42-TEK				5				Precamber = 0.0 mm	DETAILER	DETAILED
C9075ra	003	4913.1	0.75	1	SCREW-12-14x20-HEX				2	VANTAGE_DS	23-10-2019	1:35			
C9075ra	004	557.9	0.75	1						JOB NUMBER		TRUSS			
C9075ra	010	783.6	0.75	1						TSF_4410		T100			
C9075ra	020	1133.1	0.75	1						Machine Type		ENDUROTRUSS			
C9075ra	030	1081.9	0.75	1						BERT FARINA CONSTRUCTION					
C9075ra	040	805.5	0.75	1											
C9075ra	050	805.5	0.75	1											
C9075ra	060	827.4	0.75	1						CUSTOMER :					
C9075ra	070	753.6	0.75	1											

Page 1 of 1

smart: YES flush: NO  
restraint: none

LEFT ← → RIGHT

Connection Table		
A	HEEL	SC-HEEL-A-90-75-2
B	HEEL_HS	SC-HEEL-HS-90-75-1
C	APEX_HS	SC-APEX-HS-90-75-1
D	KNEE	SC-KNEE-A-90-75-2
E	CHORDPT	SC-CHORDPT-S-90-55-2
F	CHORDPT	SC-CHORDPT-B-90-75-2

ANALYSIS		QTY
Status	PASS	1
Approved BY		

Chord - Web Connections

040-3

Part Id  
Total no. fasteners at each end of the web

Connection type: (Apex,knee,heel,elbow,chordpt)

SC-HEEL-A-75-10-6

Truss system: ENDUROTRUSS (c)  
C profile

Channel depth: Depth of channel -section in mm

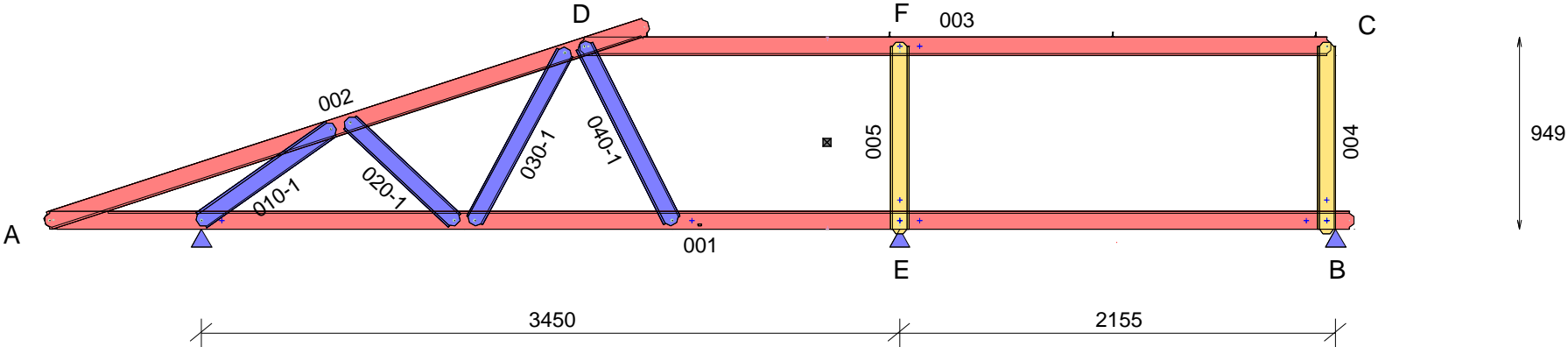
A

Connection variant: (A is heel with no stiffener)

Fastener number: Total number of fasteners used in the connection including locating truss screw and reinforcing screws

6

Channel gauge: (75 = 0.75 mm BMT 10 = 1.0 mm BMT) etc



QUALITY CHECK: Top of TOP CHORD to Bottom of BOTTOM CHORD: 949  
Chords placed flange-DOWN, Webs placed flange-UP.  
Min screws per conn: 1 ( Screw locations diagrammatic only. Refer connection sheet for details.)

PARTS LIST (per truss)										ASSEMBLY DETAILS			TRUSS DETAILS					
DESCRIPTION	No.	LEN	MAT	QTY	DESCRIPTION	No.	LEN	MAT	QTY	APEX HEIGHT	LEFT PITCH	RIGHT PITCH	UNCROPPED LENGTH	UNCROPPED HEIGHT	WEIGHT			
C9075ra	001	6469.1	0.75	1	SCREW-12-14x20-HEX				4	N/A	18 deg	-	6482	1072	20.4			
C9075ra	002	3136.4	0.75	1	Precamber = 0.0 mm									DETAILER	DETAILED	SCALE		
C9075ra	003	3713.1	0.75	1										VANTAGE_DS	23-10-2019	1:35		
C9075ra	004	947.8	0.75	1										JOB NUMBER		TRUSS		
C9075ra	005	947.8	0.75	1										TSF_4410		T101		
C9075ra	010	826.2	0.75	1										FABRICATOR:		TRUE STEEL FRAMES		
C9075ra	020	750.2	0.75	1							CLIENT REF:		4 REDWOOD ST, ROSTREVOR		Machine Type	ENDUROTRUSS		
C9075ra	030	984.8	0.75	1							CUSTOMER :		BERT FARINA CONSTRUCTION					
C9075ra	040	1005.8	0.75	1												Page 1 of 1		
TRUSSTITE				13														
SCREW-M6.5-12x42-TEK				4														

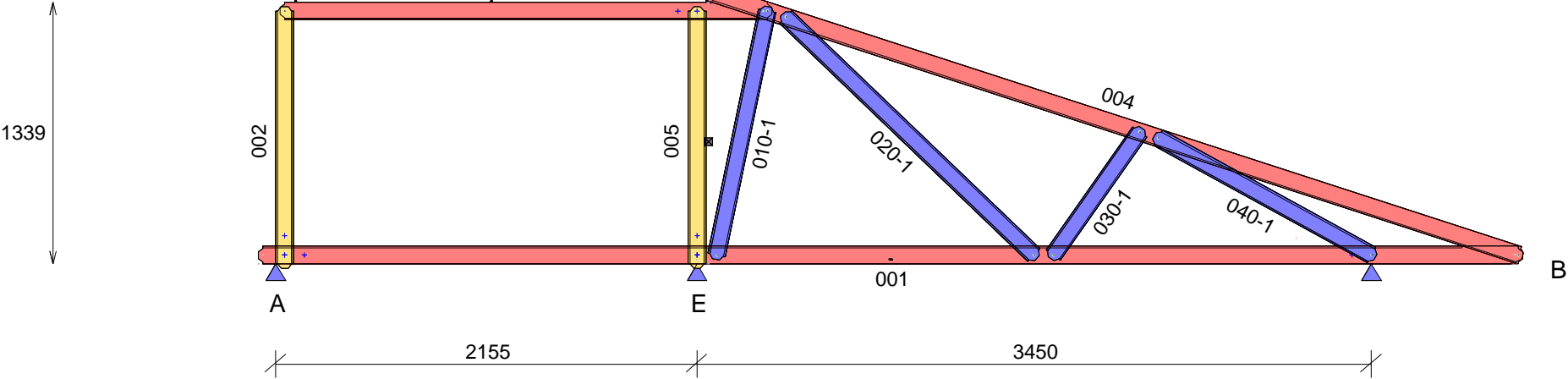
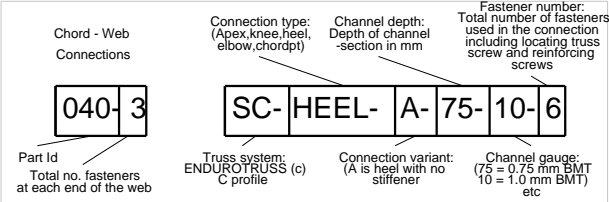
Loading: USER-W34N(m,6,-0.2,-0.13,-0.25,0,0,0,0,0,0,-1.1,-1.1,0,1200,0,0,0,0,0,600,0,0,A,1,1,1,1,1,,N1,,,,,5000,S,8000,,SEALED,)

smart: YES flush: NO  
restraint: none

LEFT ← → RIGHT

Connection Table		
A	HEEL_HS	SC-HEEL-HS-90-75-1
B	HEEL	SC-HEEL-A-90-75-2
C	KNEE	SC-KNEE-A-90-75-2
D	APEX_HS	SC-APEX-HS-90-75-1
E	CHORDPT	SC-CHORDPT-S-90-55-2
F	CHORDPT	SC-CHORDPT-B-90-75-2

ANALYSIS		QTY
Status	PASS	1
Approved BY		



QUALITY CHECK: Top of TOP CHORD to Bottom of BOTTOM CHORD: 1339  
Chords placed flange-DOWN, Webs placed flange-UP.  
Min screws per conn: 1 ( Screw locations diagrammatic only. Refer connection sheet for details.)

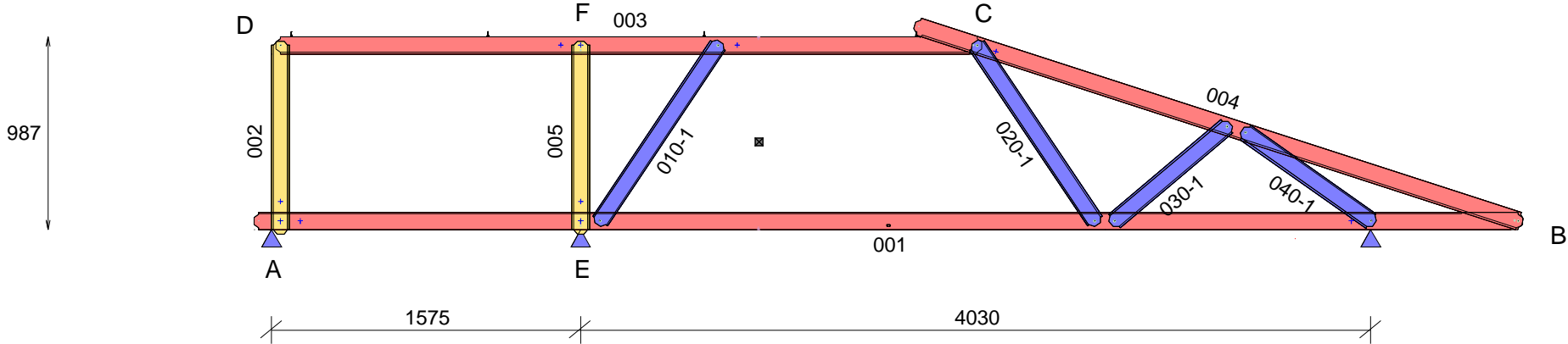
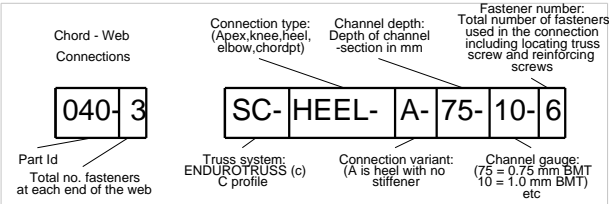
PARTS LIST (per truss)										ASSEMBLY DETAILS			TRUSS DETAILS			
DESCRIPTION	No.	LEN	MAT	QTY	DESCRIPTION	No.	LEN	MAT	QTY	APEX HEIGHT	LEFT PITCH	RIGHT PITCH	UNCROPPED LENGTH	UNCROPPED HEIGHT	WEIGHT	
C9075ra	001	6469.1	0.75	1	SCREW-12-14x20-HEX				4	N/A	-	18 deg	6482	1462	23.1	
C9075ra	002	1337.7	0.75	1						Precamber = 0.0 mm			DETAILER	DETAILED	SCALE	
C9075ra	003	2513.1	0.75	1									VANTAGE_DS	23-10-2019	1:35	
C9075ra	004	4398.1	0.75	1									JOB NUMBER		TRUSS	
C9075ra	005	1337.7	0.75	1									TSF_4410		T102	
C9075ra	010	1319.2	0.75	1												
C9075ra	020	1802.6	0.75	1						FABRICATOR:	TRUE STEEL FRAMES					
C9075ra	030	812.7	0.75	1						CLIENT REF:	4 REDWOOD ST, ROSTREVOR		Machine Type		ENDUROTRUSS	
C9075ra	040	1289	0.75	1						CUSTOMER :	BERT FARINA CONSTRUCTION					
TRUSSTITE				13												
SCREW-M6.5-12x42-TEK				6												
										Page 1 of 1						

smart: YES    flush: NO  
restraint: none

LEFT    RIGHT

ANALYSIS		QTY
Status	PASS	1
Approved BY		

Connection Table		
A	HEEL_HS	SC-HEEL-HS-90-75-1
B	HEEL	SC-HEEL-A-90-75-2
C	KNEE	SC-KNEE-A-90-75-2
D	APEX_HS	SC-APEX-HS-90-75-1
E	CHORDPT	SC-CHORDPT-S-90-55-2
F	CHORDPT	SC-CHORDPT-B-90-75-2



QUALITY CHECK: Top of TOP CHORD to Bottom of BOTTOM CHORD: 987  
Chords placed flange-DOWN, Webs placed flange-UP.  
Min screws per conn: 1 ( Screw locations diagrammatic only. Refer connection sheet for details.)

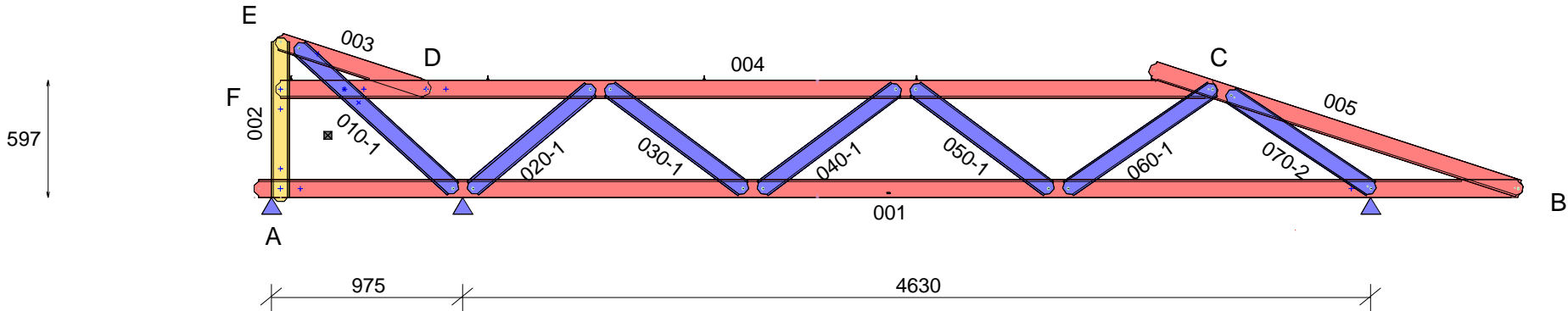
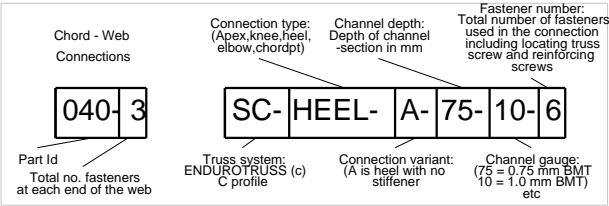
PARTS LIST (per truss)										ASSEMBLY DETAILS			TRUSS DETAILS						
DESCRIPTION	No.	LEN	MAT	QTY	DESCRIPTION	No.	LEN	MAT	QTY	APEX HEIGHT	LEFT PITCH	RIGHT PITCH	UNCROPPED LENGTH	UNCROPPED HEIGHT	WEIGHT				
C9075ra	001	6469.1	0.75	1	SCREW-12-14x20-HEX				4	N/A	-	18 deg	6482	1110	20.8				
C9075ra	002	985.8	0.75	1						Precamber = 0.0 mm			DETAILER	DETAILED	SCALE				
C9075ra	003	3596.1	0.75	1									VANTAGE_DS	23-10-2019	1:35				
C9075ra	004	3259.4	0.75	1									JOB NUMBER		TRUSS				
C9075ra	005	985.8	0.75	1									TSF_4410		T103				
C9075ra	010	1123	0.75	1						FABRICATOR:		TRUE STEEL FRAMES		Machine Type		ENDUROTRUSS			
C9075ra	020	1123.2	0.75	1						CLIENT REF:		4 REDWOOD ST, ROSTREVOR							
C9075ra	030	793.9	0.75	1						CUSTOMER :		BERT FARINA CONSTRUCTION		Page 1 of 1					
C9075ra	040	826.2	0.75	1															
TRUSSTITE									13										
SCREW-M6.5-12x42-TEK									4										

smart: YES flush: NO  
restraint: none

LEFT ← → RIGHT

ANALYSIS		QTY
Status	PASS	1
Approved BY		

Connection Table		
A	HEEL_HS	SC-HEEL-HS-90-75-1
B	HEEL	SC-HEEL-A-90-75-2
C	KNEE	SC-KNEE-A-90-75-2
D	CHORDPT	SC-CHORDPT-A-90-75-2
E	APEX_HS	SC-APEX-HS-90-75-1
F	CHORDPT	SC-CHORDPT-B-90-75-2



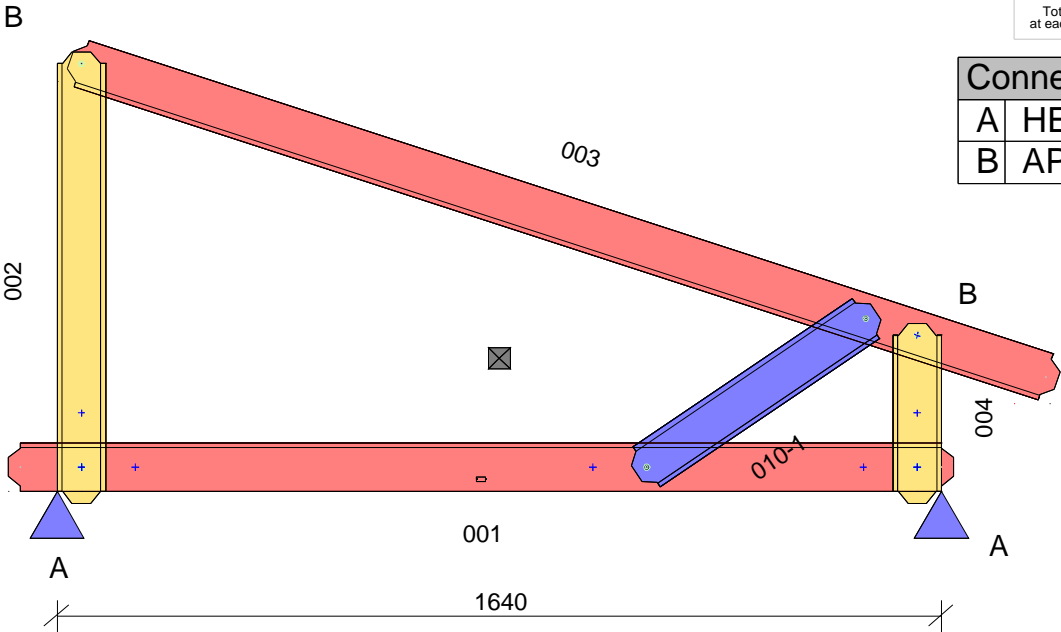
Loading: USER-W34N(m,6,-0.2,-0.13,-0.25,0,0,0,0,0,0,-1.1,-1.1,0,1200,0,0,0,0,0,600,0,0,A,1,1,1,1,1,,N1,,,,,5000,S,8000,,SEALED,)

smart: YES flush: NO  
restraint: none

LEFT ← → RIGHT

ANALYSIS		QTY
Status	PASS	1
Approved BY		

Chord - Web Connections	Connection type: (Apex,knee,heel, elbow,chordpt)	Channel depth: Depth of channel -section in mm	Fastener number: Total number of fasteners used in the connection including locating truss screw and reinforcing screws
040-3	SC-HEEL-A-75-10-6		
Part Id Total no. fasteners at each end of the web	Truss system: ENDUROTRUSS (c) C profile	Connection variant: (A is heel with no stiffener)	Channel gauge: (75 = 0.75 mm BMT 10 = 1.0 mm BMT) etc



Connection Table		
A	HEEL_HS	SC-HEEL-HS-90-75-1
B	APEX_HS	SC-APEX-HS-90-75-1

Chords placed flange-DOWN, Webs placed flange-UP.  
Min screws per conn: 1 ( Screw locations diagrammatic only. Refer connection sheet for details.)

PARTS LIST (per truss)					ASSEMBLY DETAILS			TRUSS DETAILS		
DESCRIPTION	No.	LEN	MAT	QTY	APEX HEIGHT	LEFT PITCH	RIGHT PITCH	UNCROPPED LENGTH	UNCROPPED HEIGHT	WEIGHT
C9075ra	001	1752	0.75	1	N/A	-	18 deg	1958	865	5.9
C9075ra	002	837	0.75	1				Precamber = 0.0 mm	DETAILER	DETAILED
C9075ra	003	1924	0.75	1	VANTAGE_DS	23-10-2019	1:15			
C9075ra	004	333.4	0.75	1	JOB NUMBER		TRUSS			
C9075ra	010	535	0.75	1	TSF_4410		T105			
TRUSSTITE				6	FABRICATOR:	TRUE STEEL FRAMES		Machine Type		ENDUROTRUSS
					CLIENT REF:	4 REDWOOD ST, ROSTREVOR				
					CUSTOMER :	BERT FARINA CONSTRUCTION		Page 1 of 1		

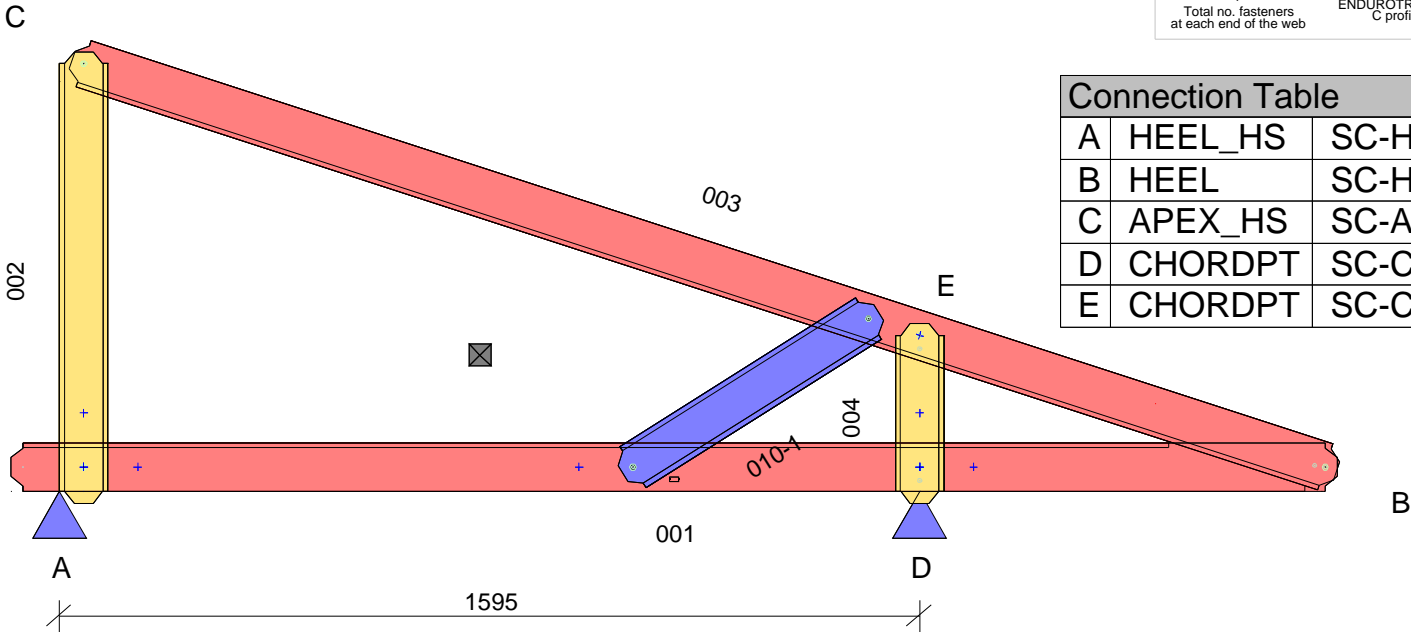


smart: YES flush: NO  
restraint: none

LEFT ← → RIGHT

ANALYSIS		QTY
Status	PASS	1
Approved BY		

Chord - Web Connections	Connection type: (Apex,knee,heel,elbow,chordpt)	Channel depth: Depth of channel -section in mm	Fastener number: Total number of fasteners used in the connection including locating truss screw and reinforcing screws
040-3	SC-HEEL-A-75-10-6		
Part Id Total no. fasteners at each end of the web	Truss system: ENDUROTRUSS (c) C profile	Connection variant: (A is heel with no stiffener)	Channel gauge: (75 = 0.75 mm BMT 10 = 1.0 mm BMT) etc



Connection Table		
A	HEEL_HS	SC-HEEL-HS-90-75-1
B	HEEL	SC-HEEL-A-90-75-2
C	APEX_HS	SC-APEX-HS-90-75-1
D	CHORDPT	SC-CHORDPT-S-90-55-2
E	CHORDPT	SC-CHORDPT-B-90-75-2

Chords placed flange-DOWN, Webs placed flange-UP.  
Min screws per conn: 1 ( Screw locations diagrammatic only. Refer connection sheet for details.)

PARTS LIST (per truss)					ASSEMBLY DETAILS			TRUSS DETAILS		
DESCRIPTION	No.	LEN	MAT	QTY	APEX HEIGHT	LEFT PITCH	RIGHT PITCH	UNCROPPED LENGTH	UNCROPPED HEIGHT	WEIGHT
C9075ra	001	2459.1	0.75	1	N/A	-	18 deg	2472	865	7.2
C9075ra	002	837	0.75	1				DETAILER	DETAILED	SCALE
C9075ra	003	2464.6	0.75	1	Precamber = 0.0 mm		VANTAGE_DS			
C9075ra	004	333.3	0.75	1						
C9075ra	010	560.1	0.75	1						
TRUSSTITE				7	FABRICATOR:		TRUE STEEL FRAMES	JOB NUMBER		TRUSS
SCREW-12-14x20-HEX				3	CLIENT REF:		4 REDWOOD ST, ROSTREVOR	TSF_4410		T106
					CUSTOMER :		BERT FARINA CONSTRUCTION	Machine Type		ENDUROTRUSS
					Page 1 of 1					

smart: YES flush: NO  
restraint: none

LEFT ← → RIGHT

ANALYSIS		QTY
Status	PASS	1
Approved BY		

Connection Table		
A	HEEL	SC-HEEL-A-90-75-2
B	HEEL_HS	SC-HEEL-HS-90-75-1
C	APEX_HS	SC-APEX-HS-90-75-1
D	CHORDPT	SC-CHORDPT-S-90-55-2
E	CHORDPT	SC-CHORDPT-B-90-75-2

Chord - Web Connections

040-3

Part Id  
Total no. fasteners at each end of the web

Connection type:  
(Apex,knee,heel,elbow,chordpt)

Channel depth:  
Depth of channel -section in mm

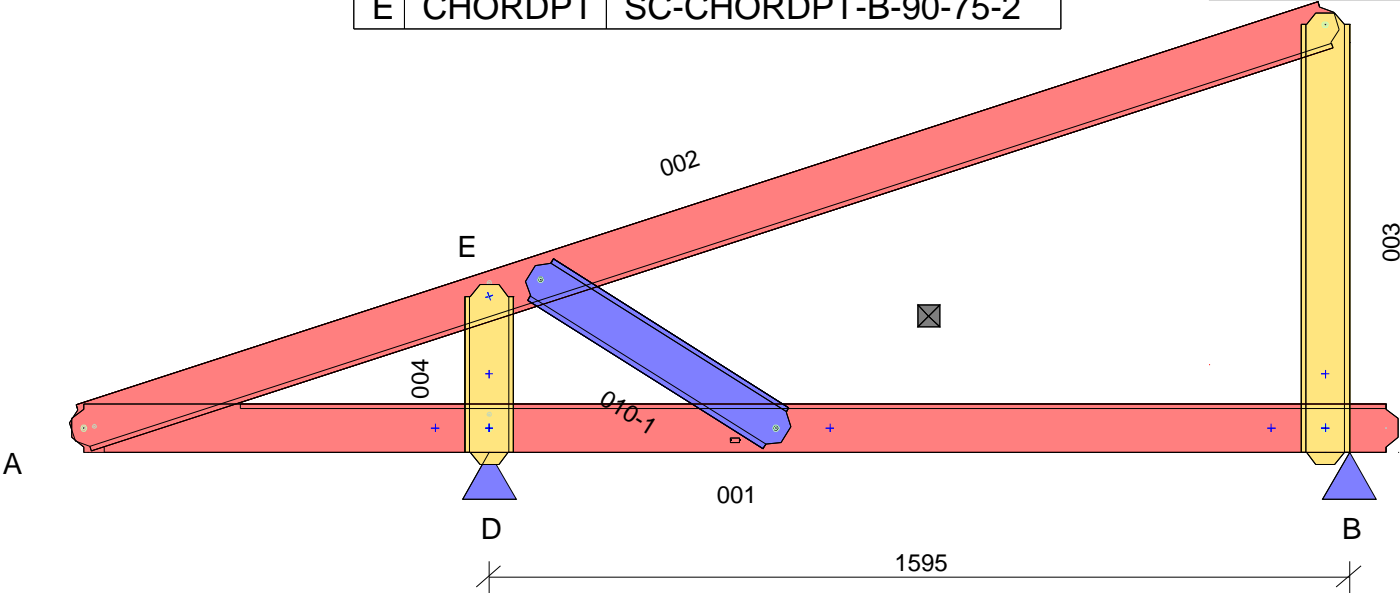
Fastener number:  
Total number of fasteners used in the connection including locating truss screw and reinforcing screws

SC-HEEL-A-75-10-6

Truss system:  
ENDUROTRUSS (c)  
C profile

Connection variant:  
(A is heel with no stiffener)

Channel gauge:  
(75 = 0.75 mm BMT  
10 = 1.0 mm BMT)  
etc



Chords placed flange-DOWN, Webs placed flange-UP.  
Min screws per conn: 1 ( Screw locations diagrammatic only. Refer connection sheet for details.)

PARTS LIST (per truss)					ASSEMBLY DETAILS			TRUSS DETAILS		
DESCRIPTION	No.	LEN	MAT	QTY	APEX HEIGHT	LEFT PITCH	RIGHT PITCH	UNCROPPED LENGTH	UNCROPPED HEIGHT	WEIGHT
C9075ra	001	2459.1	0.75	1	N/A	18 deg	-	2472	865	7.2
C9075ra	002	2464.6	0.75	1				Precamber = 0.0 mm	DETAILER	DETAILED
C9075ra	003	837	0.75	1	VANTAGE_DS	23-10-2019	1:15			
C9075ra	004	333.3	0.75	1	JOB NUMBER		TRUSS			
C9075ra	010	560.1	0.75	1	TSF_4410		T107			
TRUSSTITE				7	FABRICATOR:	TRUE STEEL FRAMES		Machine Type		
SCREW-12-14x20-HEX				3	CLIENT REF:	4 REDWOOD ST, ROSTREVOR				
					CUSTOMER :	BERT FARINA CONSTRUCTION		Page 1 of 1		

smart: YES flush: NO  
restraint: none

LEFT ← → RIGHT

Connection Table		
A	HEEL_HS	SC-HEEL-HS-90-75-1
B	APEX_HS	SC-APEX-HS-90-75-1

ANALYSIS		QTY
Status	PASS	1
Approved BY		

Chord - Web Connections

040-3

Part Id  
Truss no. fasteners at each end of the web

Connection type:  
(Apex,knee,heel,elbow,chordpt)

Channel depth:  
Depth of channel -section in mm

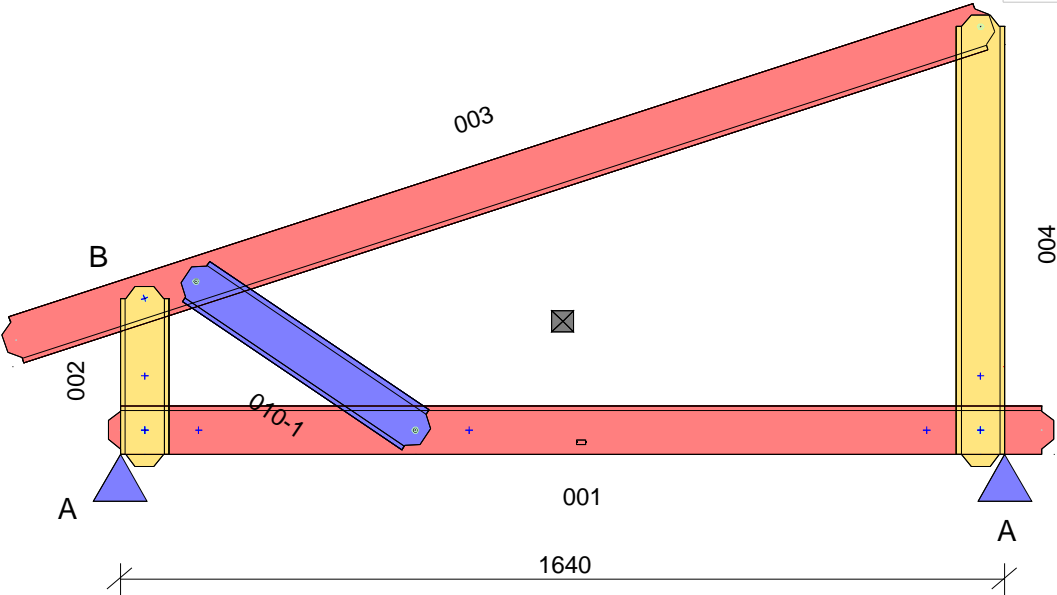
Fastener number:  
Total number of fasteners used in the connection including locating truss screw and reinforcing screws

SC-HEEL-A-75-10-6

Truss system:  
ENDUROTRUSS (c)  
C profile

Connection variant:  
(A is heel with no stiffener)

Channel gauge:  
(75 = 0.75 mm BMT  
10 = 1.0 mm BMT)  
etc



Chords placed flange-DOWN, Webs placed flange-UP.  
Min screws per conn: 1 ( Screw locations diagrammatic only. Refer connection sheet for details.)

PARTS LIST (per truss)					ASSEMBLY DETAILS			TRUSS DETAILS			
DESCRIPTION	No.	LEN	MAT	QTY	APEX HEIGHT	LEFT PITCH	RIGHT PITCH	UNCROPPED LENGTH	UNCROPPED HEIGHT	WEIGHT	
C9075ra	001	1752	0.75	1	N/A	18 deg	-	1958	865	5.9	
C9075ra	002	333.4	0.75	1							
C9075ra	003	1924	0.75	1	Precamber = 0.0 mm			DETAILER	DETAILED	SCALE	
C9075ra	004	837	0.75	1				VANTAGE_DS	23-10-2019	1:15	
C9075ra	010	535	0.75	1				JOB NUMBER		TRUSS	
TRUSSTITE				6				TSF_4410		T108	
					FABRICATOR:	TRUE STEEL FRAMES		Machine Type		ENDUROTRUSS	
					CLIENT REF:	4 REDWOOD ST, ROSTREVOR					
					CUSTOMER :	BERT FARINA CONSTRUCTION					
					Page 1 of 1						

smart: YES flush: NO  
restraint: none

LEFT ← → RIGHT

Connection Table		
A	HEEL	SC-HEEL-A-90-75-2
B	HEEL_HS	SC-HEEL-HS-90-75-1
C	APEX_HS	SC-APEX-HS-90-75-1
D	CHORDPT	SC-CHORDPT-A-90-75-2
E	KNEE	SC-KNEE-A-90-75-2
F	CHORDPT	SC-CHORDPT-B-90-75-2

ANALYSIS		QTY
Status	PASS	1
Approved BY		

Chord - Web Connections

040-3

Part Id  
Total no. fasteners at each end of the web

Connection type: (Apex,knee,heel,elbow,chordpt)

SC-HEEL-A-75-10-6

Truss system: ENDUROTRUSS (c)  
C profile

Channel depth: Depth of channel -section in mm

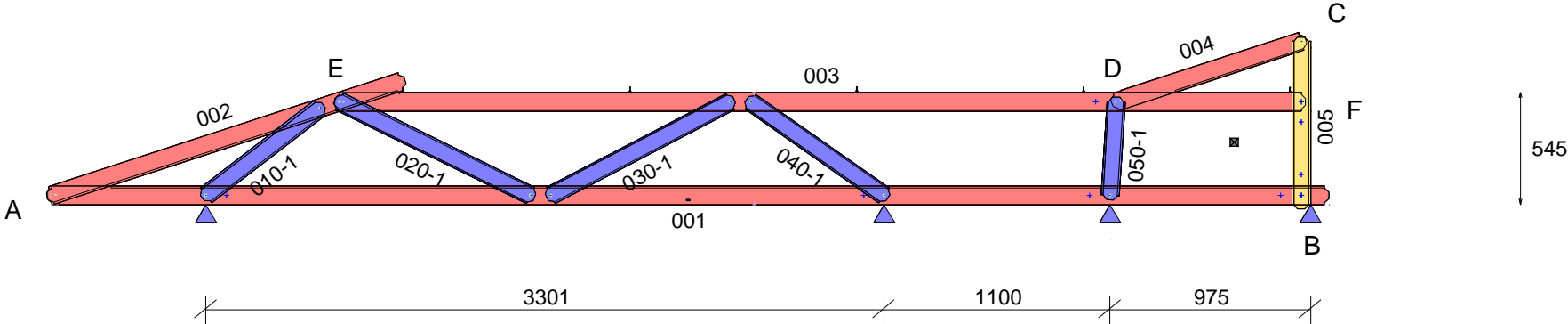
75

Connection variant: (A is heel with no stiffener)

Fastener number: Total number of fasteners used in the connection including locating truss screw and reinforcing screws

10

Channel gauge: (75 = 0.75 mm BMT 10 = 1.0 mm BMT) etc



QUALITY CHECK: Top of TOP CHORD to Bottom of BOTTOM CHORD: 545  
Chords placed flange-DOWN, Webs placed flange-UP.  
Min screws per conn: 1 ( Screw locations diagrammatic only. Refer connection sheet for details.)

PARTS LIST (per truss)										ASSEMBLY DETAILS			TRUSS DETAILS			
DESCRIPTION	No.	LEN	MAT	QTY	DESCRIPTION	No.	LEN	MAT	QTY	APEX HEIGHT	LEFT PITCH	RIGHT PITCH	UNCROPPED LENGTH	UNCROPPED HEIGHT	WEIGHT	
C9075ra	001	6240.1	0.75	1	SCREW-M6.5-12x42-TEK				5	N/A	18 deg	-	6253	865	20.4	
C9075ra	002	1830.5	0.75	1	SCREW-12-14x20-HEX				4							
C9075ra	003	4726.1	0.75	1						Precamber = 0.0 mm			DETAILER	DETAILED	SCALE	
C9075ra	004	991.5	0.75	1									VANTAGE_DS	23-10-2019	1:35	
C9075ra	005	837	0.75	1									JOB NUMBER		TRUSS	
C9075ra	010	741.8	0.75	1						FABRICATOR:		TRUE STEEL FRAMES		TSF_4410		T109
C9075ra	020	1079	0.75	1						CLIENT REF:		4 REDWOOD ST, ROSTREVOR		Machine Type		
C9075ra	030	1028	0.75	1						CUSTOMER :		BERT FARINA CONSTRUCTION				
C9075ra	040	837.5	0.75	1												
C9075ra	050	500.1	0.75	1												
TRUSSTITE				14												

Page 1 of 1

smart: YES flush: NO  
restraint: none

LEFT ← → RIGHT

ANALYSIS		QTY
Status	PASS	1
Approved BY		

Connection Table		
A	HEEL_HS	SC-HEEL-HS-90-75-1
B	APEX_HS	SC-APEX-HS-90-75-1
C	KNEE	SC-KNEE-A-90-75-2
D	CHORDPT	SC-CHORDPT-S-90-55-2
E	CHORDPT	SC-CHORDPT-B-90-75-2

Chord - Web Connections

040-3

Part Id  
Total no. fasteners at each end of the web

Connection type:  
(Apex,knee,heel,elbow,chordpt)

SC-HEEL-A-75-10-6

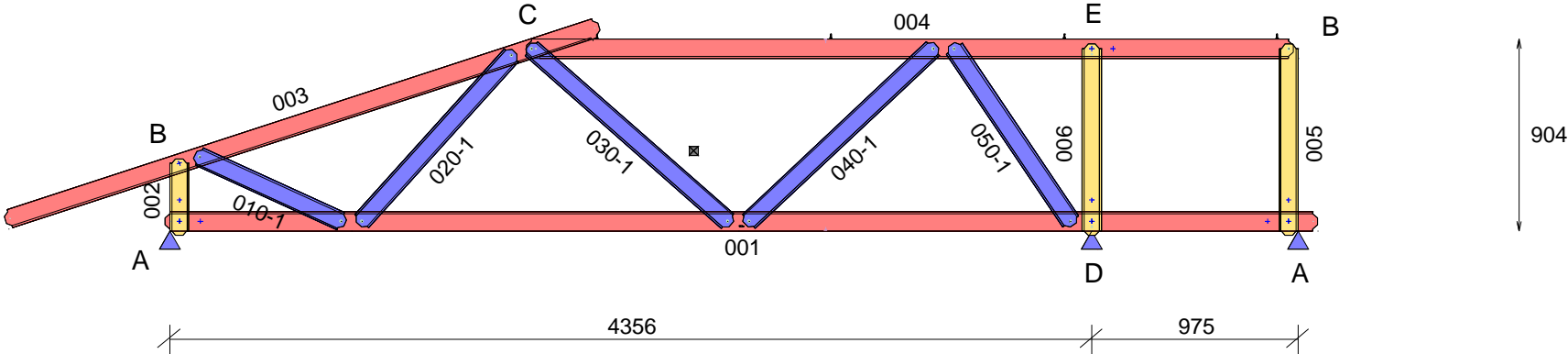
Truss system:  
ENDUROTRUSS (c)  
C profile

Channel depth:  
Depth of channel -section in mm

Channel gauge:  
(75 = 0.75 mm BMT  
10 = 1.0 mm BMT)  
etc

Connection variant:  
(A is heel with no stiffener)

Fastener number:  
Total number of fasteners used in the connection including locating truss screw and reinforcing screws



QUALITY CHECK: Top of TOP CHORD to Bottom of BOTTOM CHORD: 903  
Chords placed flange-DOWN, Webs placed flange-UP.  
Min screws per conn: 1 ( Screw locations diagrammatic only. Refer connection sheet for details.)

PARTS LIST (per truss)										ASSEMBLY DETAILS			TRUSS DETAILS		
DESCRIPTION	No.	LEN	MAT	QTY	DESCRIPTION	No.	LEN	MAT	QTY	APEX HEIGHT	LEFT PITCH	RIGHT PITCH	UNCROPPED LENGTH	UNCROPPED HEIGHT	WEIGHT
C9075ra	001	5443	0.75	1	TRUSSTITE				16	N/A	18 deg	-	6211	1028	21.3
C9075ra	002	362.6	0.75	1	SCREW-M6.5-12x42-TEK				4				Precamber = 1.0 mm	DETAILER	DETAILED
C9075ra	003	2948.2	0.75	1	SCREW-12-14x20-HEX				3	VANTAGE_DS	23-10-2019	1:35			
C9075ra	004	3621.1	0.75	1						JOB NUMBER		TRUSS			
C9075ra	005	903.3	0.75	1						TSF_4410		T110			
C9075ra	006	903.3	0.75	1						Machine Type		ENDUROTRUSS			
C9075ra	010	777.8	0.75	1						BERT FARINA CONSTRUCTION					
C9075ra	020	1098	0.75	1											
C9075ra	030	1277.3	0.75	1											
C9075ra	040	1234.9	0.75	1											
C9075ra	050	1026.6	0.75	1						CUSTOMER :					

Page 1 of 1

smart: YES flush: NO  
restraint: none

LEFT ← → RIGHT

ANALYSIS

QTY

Status

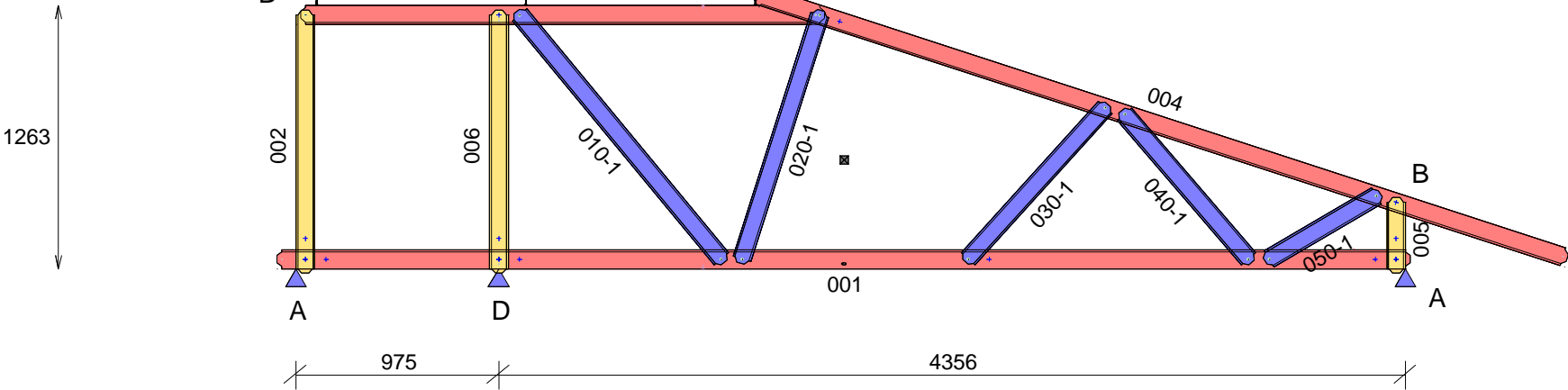
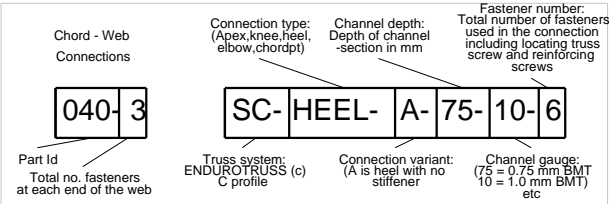
PASS

Approved BY

1

Connection Table

A	HEEL_HS	SC-HEEL-HS-90-75-1
B	APEX_HS	SC-APEX-HS-90-75-1
C	KNEE	SC-KNEE-A-90-75-2
D	CHORDPT	SC-CHORDPT-S-90-55-2
E	CHORDPT	SC-CHORDPT-B-90-75-2



QUALITY CHECK: Top of TOP CHORD to Bottom of BOTTOM CHORD: 1260

Chords placed flange-DOWN, Webs placed flange-UP.

Min screws per conn: 1 ( Screw locations diagrammatic only. Refer connection sheet for details.)

PARTS LIST (per truss)

ASSEMBLY DETAILS

TRUSS DETAILS

DESCRIPTION	No.	LEN	MAT	QTY	DESCRIPTION	No.	LEN	MAT	QTY	APEX HEIGHT	LEFT PITCH	RIGHT PITCH	UNCROPPED LENGTH	UNCROPPED HEIGHT	WEIGHT			
C9075ra	001	5443	0.75	1	TRUSSTITE				16	N/A	-	18 deg	6211	1387	22.2			
C9075ra	002	1262.3	0.75	1	SCREW-M6.5-12x42-TEK				6									
C9075ra	003	2516.1	0.75	1	SCREW-12-14x20-HEX				3	Precamber = 3.0 mm			DETAILER	DETAILED	SCALE			
C9075ra	004	4110.1	0.75	1					VANTAGE_DS				23-10-2019	1:35				
C9075ra	005	362.6	0.75	1					JOB NUMBER				TRUSS					
C9075ra	006	1262.3	0.75	1					FABRICATOR:				TRUE STEEL FRAMES		TSF_4410		T111	
C9075ra	010	1563	0.75	1					CLIENT REF:				4 REDWOOD ST, ROSTREVOR		Machine Type			ENDUROTRUSS
C9075ra	020	1273.5	0.75	1	CUSTOMER :		BERT FARINA CONSTRUCTION											
C9075ra	030	1022.4	0.75	1														
C9075ra	040	958.7	0.75	1														
C9075ra	050	641.7	0.75	1														

Page 1 of 1

smart: YES flush: NO  
restraint: none

LEFT ← → RIGHT

ANALYSIS

QTY

Status

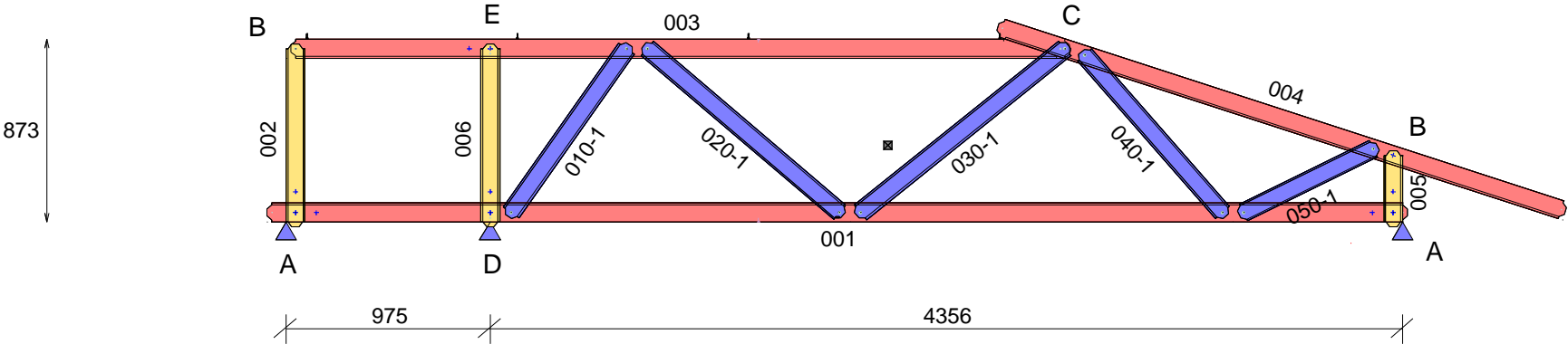
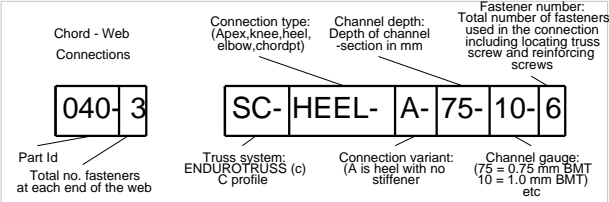
PASS

Approved BY

1

Connection Table

A	HEEL_HS	SC-HEEL-HS-90-75-1
B	APEX_HS	SC-APEX-HS-90-75-1
C	KNEE	SC-KNEE-A-90-75-2
D	CHORDPT	SC-CHORDPT-S-90-55-2
E	CHORDPT	SC-CHORDPT-B-90-75-2



QUALITY CHECK: Top of TOP CHORD to Bottom of BOTTOM CHORD: 872

Chords placed flange-DOWN, Webs placed flange-UP.

Min screws per conn: 1 ( Screw locations diagrammatic only. Refer connection sheet for details.)

PARTS LIST (per truss)

ASSEMBLY DETAILS

TRUSS DETAILS

PARTS LIST (per truss)										ASSEMBLY DETAILS			TRUSS DETAILS				
DESCRIPTION	No.	LEN	MAT	QTY	DESCRIPTION	No.	LEN	MAT	QTY	APEX HEIGHT	LEFT PITCH	RIGHT PITCH	UNCROPPED LENGTH	UNCROPPED HEIGHT	WEIGHT		
C9075ra	001	5443	0.75	1	TRUSSTITE				16	N/A	-	18 deg	6211	997	21.1		
C9075ra	002	872.4	0.75	1	SCREW-M6.5-12x42-TEK				4	Precamber = 1.0 mm			DETAILER	DETAILED	SCALE		
C9075ra	003	3716.1	0.75	1	SCREW-12-14x20-HEX				3				VANTAGE_DS	23-10-2019	1:35		
C9075ra	004	2848.3	0.75	1									JOB NUMBER		TRUSS		
C9075ra	005	362.6	0.75	1						FABRICATOR:			TRUE STEEL FRAMES		TSF_4410		T112
C9075ra	006	872.4	0.75	1						CLIENT REF:			4 REDWOOD ST, ROSTREVOR		Machine Type		ENDUROTRUSS
C9075ra	010	1001.2	0.75	1						CUSTOMER :			BERT FARINA CONSTRUCTION		Page 1 of 1		
C9075ra	020	1249.8	0.75	1													
C9075ra	030	1293.8	0.75	1													
C9075ra	040	1043.3	0.75	1													
C9075ra	050	734.9	0.75	1													

smart: YES flush: NO  
restraint: none

LEFT ← → RIGHT

Connection Table		
A	HEEL_HS	SC-HEEL-HS-90-75-1
B	APEX_HS	SC-APEX-HS-90-75-1
C	KNEE	SC-KNEE-A-90-75-2

ANALYSIS		QTY
Status	PASS	1
Approved BY		

