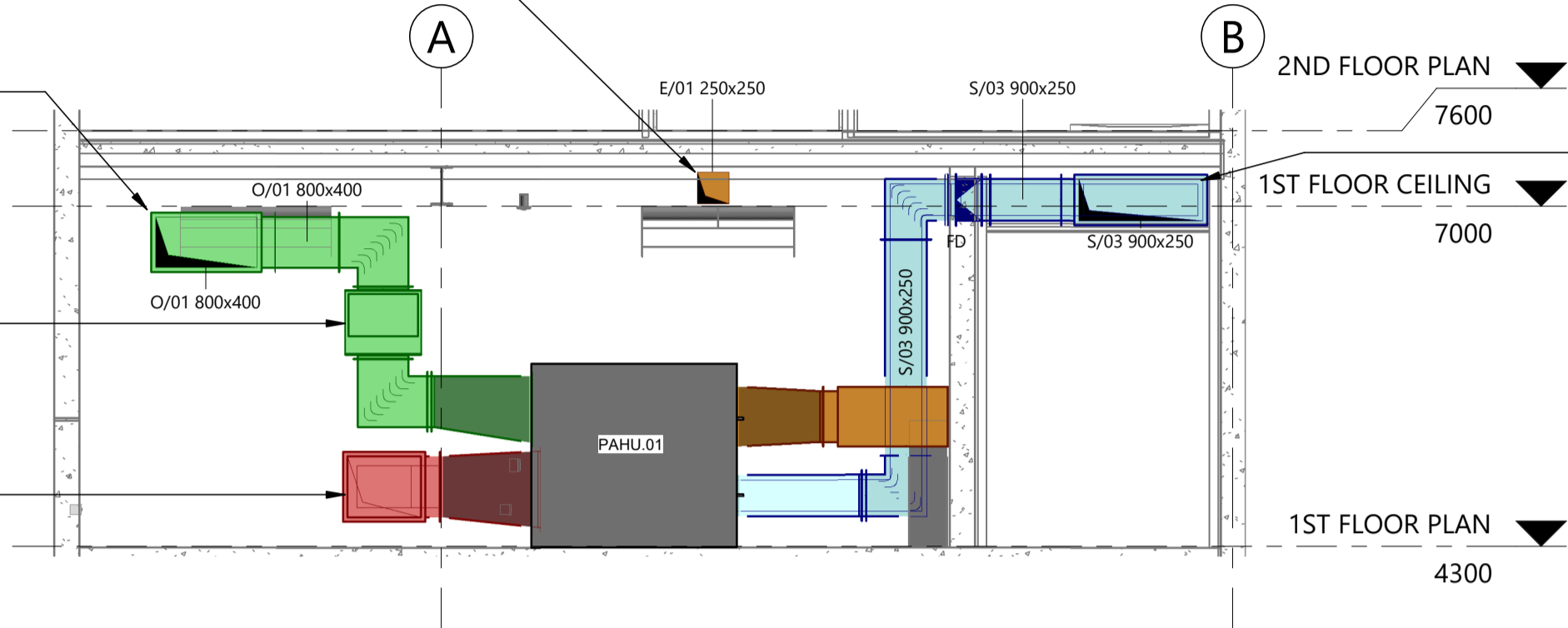


GENERAL EXHAUST SYSTEM TO VENTILATE PLANT ROOM. INTERNALLY COAT ENTIRE DUCT SYSTEM AND EXTERNALLY COAT DUCT SYSTEM EXPOSED TO PLANT ROOM WITH EPOXY CORROSION PROTECTION.

OUTSIDE AIR DUCTWORK ROLLING OVER AT HIGH LEVEL TO ALLOW FOR POOL PLANT EQUIPMENT TO BE LOCATED UNDERNEATH. POOL PLANT EQUIPMENT AND LAYOUT TO BE CONFIRMED WITH POOL CONTRACTOR.

CLASS F5 BAG TYPE FILTER FOR OUTSIDE AIR DUCT. FILTER TO BE LOCATED IN VERTICAL DUCT SECTION BEFORE CONNECTING INTO UNIT.

RETURN AIR DUCT TO RETICULATE FROM RISER ABOVE AND CONNECT INTO UNIT AT LOW LEVEL. PANEL FILTER TO BE PROVIDED IN HORIZONTAL DUCT SECTION BEFORE CONNECTING INTO UNIT.



POOL PLANT ROOM SECTION VEIW
SCALE 1 : 50

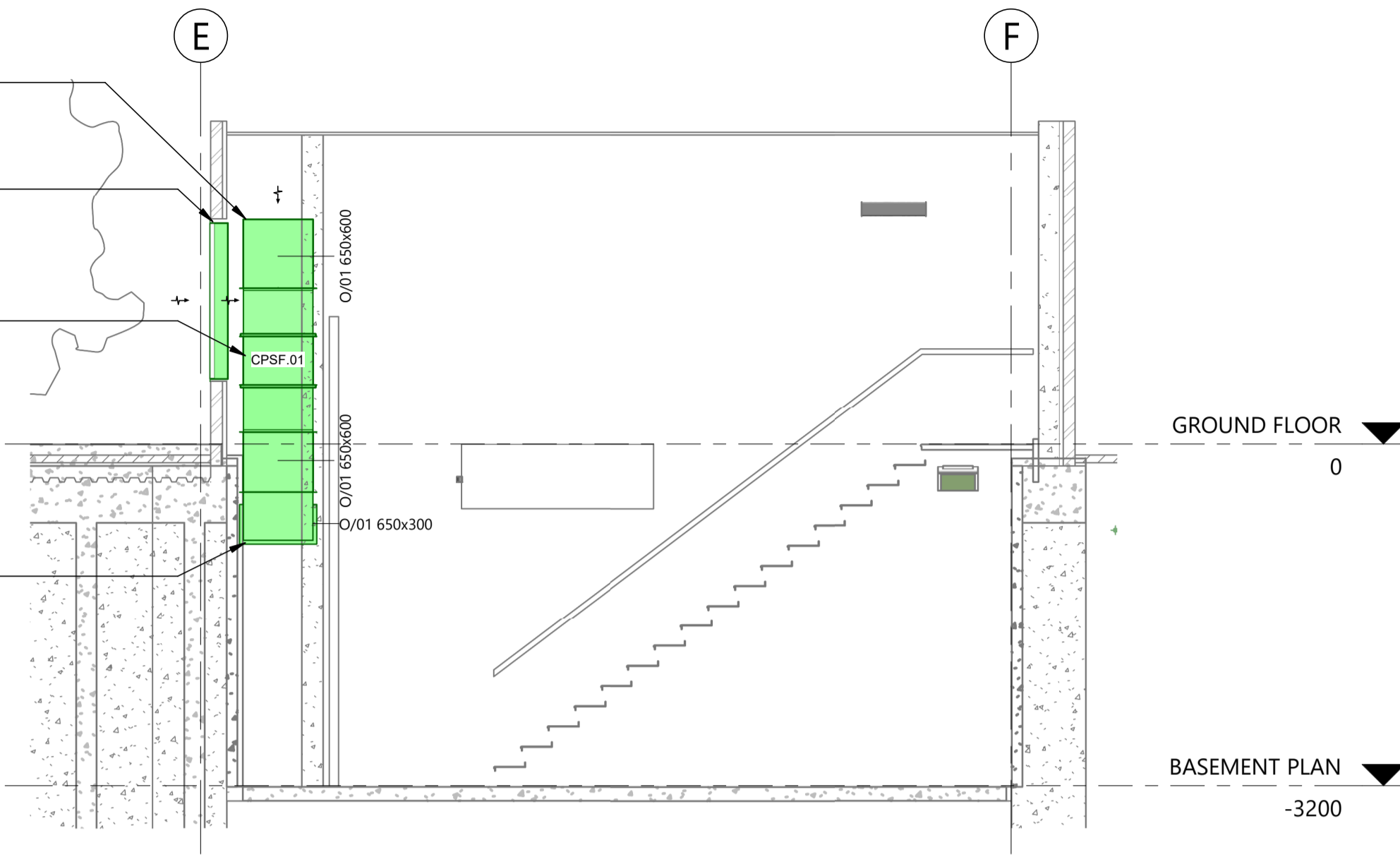
TOP OF DUCT TO REMAIN OPEN AND PROVIDED WITH VERMIN PROOF MESH FOR SUPPLY AIR INTAKE.

REMOVABLE WEATHER PROOF LOUVRE TO PROVIDE OUTSIDE AIR. LOUVRE TO BE PROVIDED BY BUILDIER, TYPICAL. REMOVABLE LOUVRE TO ALLOW ACCESS TO FAN LOCATED WITHIN RISER.

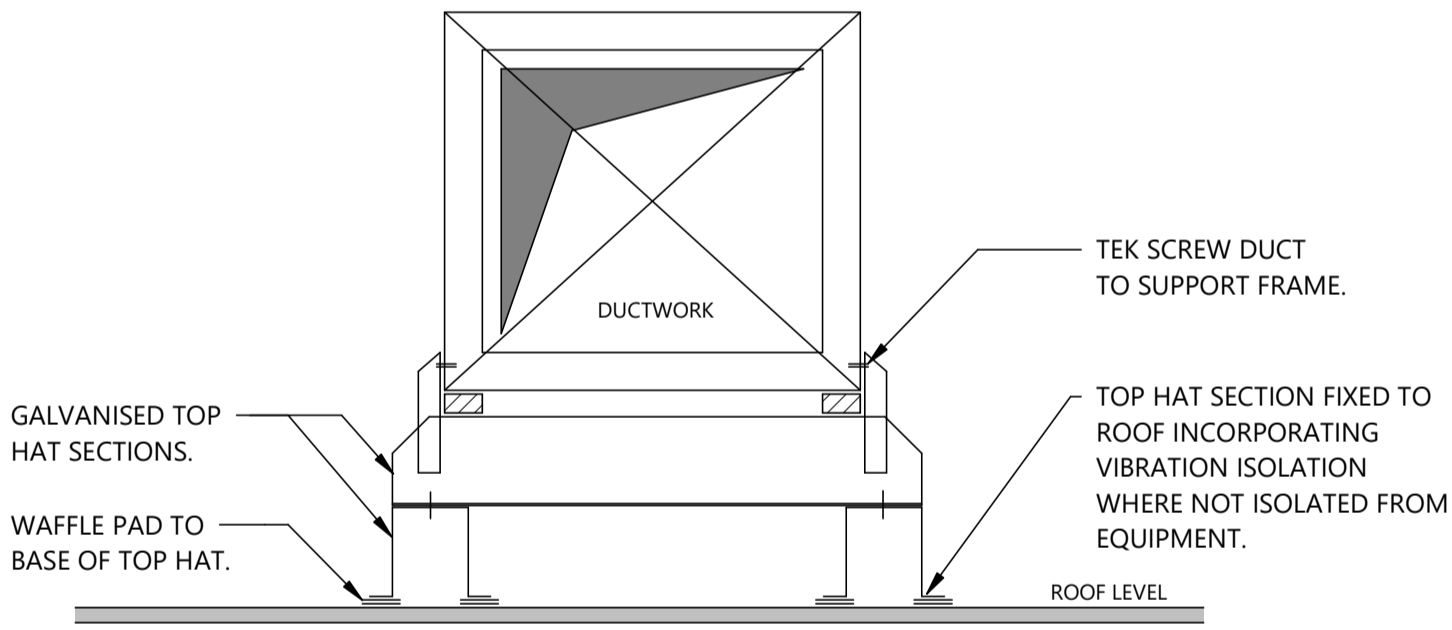
CAR PARK SUPPLY AIR FAN TO BE MOUNTED VERTICALLY IN RISER SECTION OF DUCT.

SUPPLY AIR DUCTWORK TO RISE WITHIN PLANT ROOM, ROLL OVER WITHIN CORRIDOR CEILING SPACE TO THEN ALIGN WITH LEVEL 2 RISER ADJACENT AMENITY SPACES ABOVE.

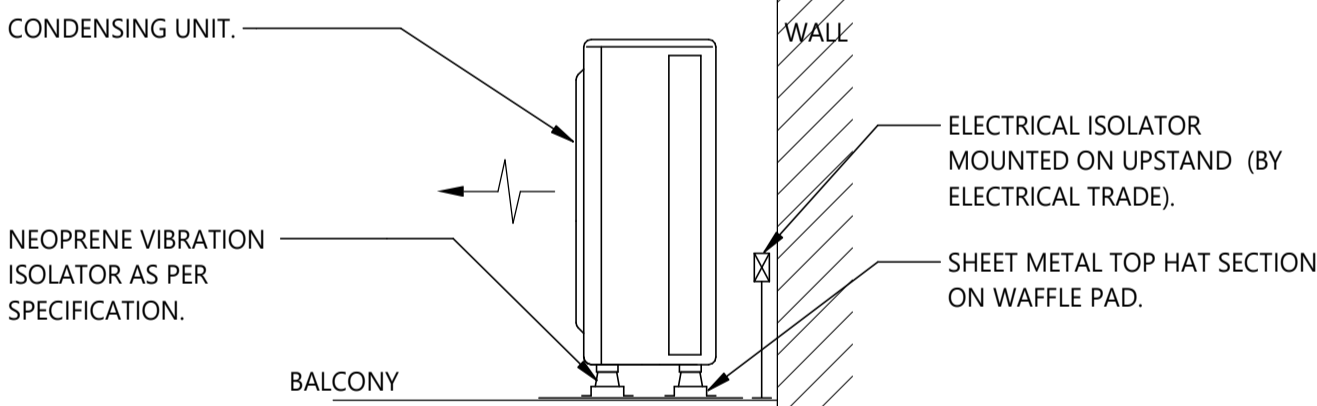
CAR PARK SUPPLY AIR DUCTWORK ROLLING OVER INTO BASEMENT LEVEL CAR PARK.



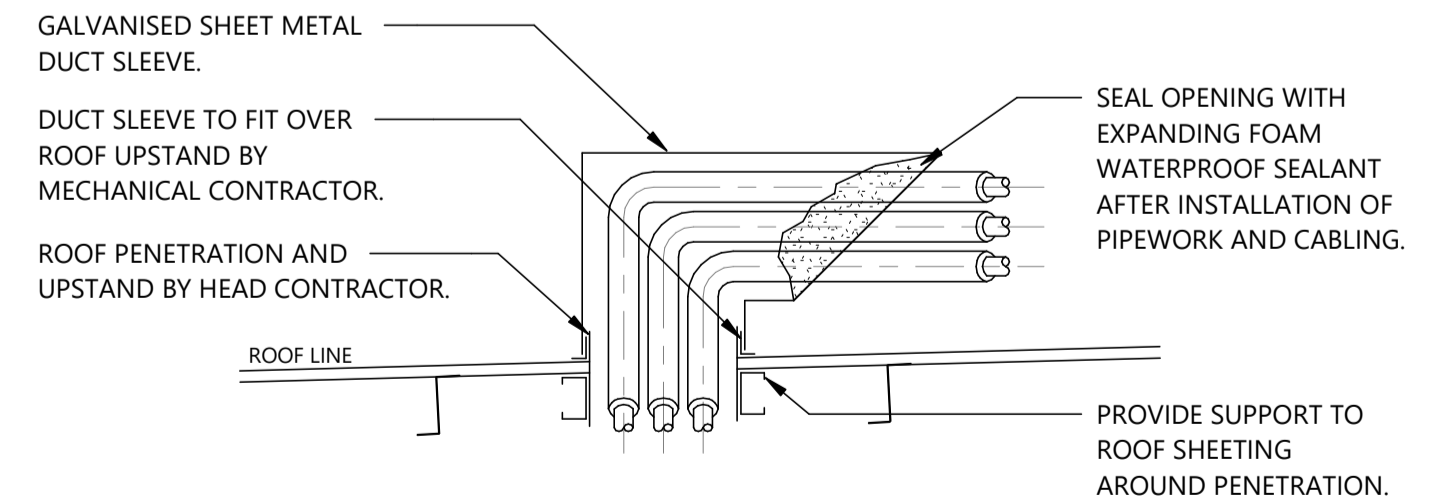
CAR PARK SUPPY AIR FAN RISER SECTION VIEW
SCALE 1 : 50



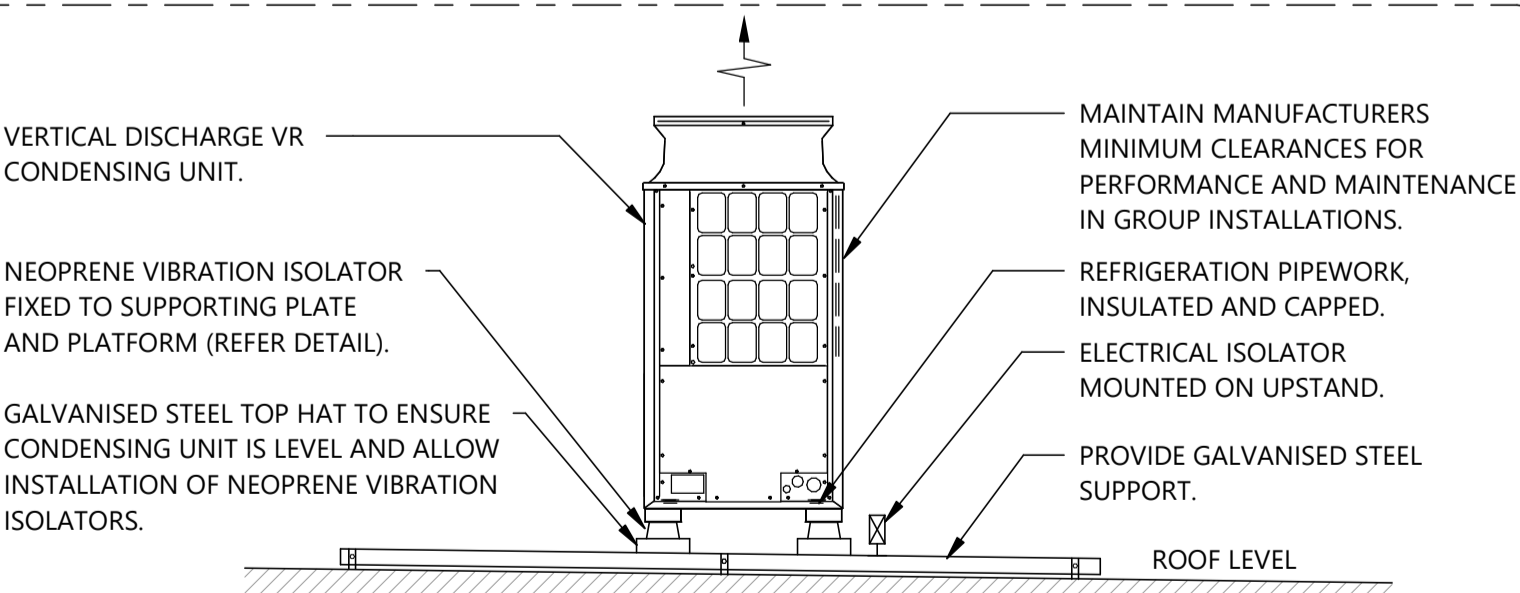
ROOF MOUNTED DUCT SUPPORT DETAIL
NOT TO SCALE
FOR INFORMATION ONLY



CONDENSING UNIT MOUNTING DETAIL
NOT TO SCALE
FOR INFORMATION ONLY



REFRIGERATION PIPEWORK ROOF PENETRATION DETAIL
NOT TO SCALE
FOR INFORMATION ONLY

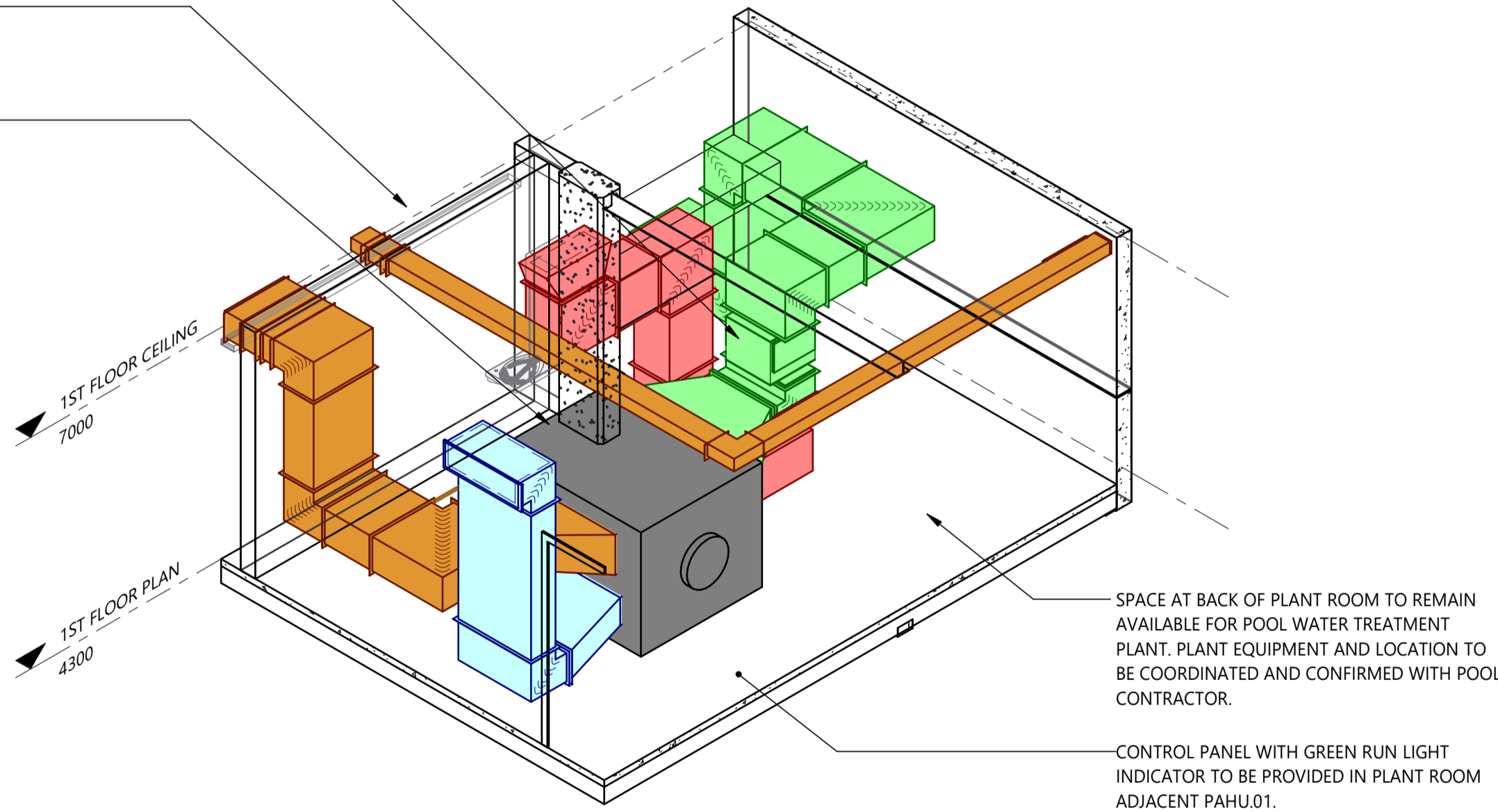


ROOF MOUNTED VR CONDENSING UNIT DETAIL
NOT TO SCALE
FOR INFORMATION ONLY

OUTSIDE AIR DUCT TO BE PROVIDED WITH BAG FILTER IN VERTICAL SECTION OF DUCT PRIOR TO CONNECTION INTO AIR HANDLING UNIT.

GENERAL EXHAUST SYSTEM SERVING POOL PLANT ROOM WITH EXPOSED DUCTWORK RUNNING AT HIGH LEVEL.

ISOMETRIC VIEW OF POOL PLANT ROOM AND AIR HANDLING UNIT FOR REFERENCE.



POOL AHU ISOMETRIC VIEW
SCALE

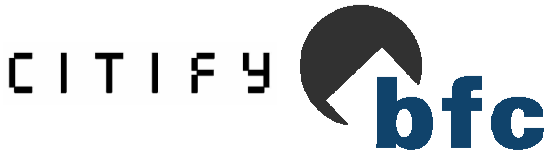
SPACE AT BACK OF PLANT ROOM TO REMAIN AVAILABLE FOR POOL WATER TREATMENT PLANT. PLANT EQUIPMENT AND LOCATION TO BE COORDINATED AND CONFIRMED WITH POOL CONTRACTOR.

CONTROL PANEL WITH GREEN RUN LIGHT INDICATOR TO BE PROVIDED IN PLANT ROOM ADJACENT PAHU.01.

T1	TENDER ISSUE	23.05.19	TR	
REV N	DESCRIPTION	DATE	CHK'D	

© Copyright Lucid Consulting Australia 23/05/2019 11:30:57 AM

TENDER ISSUE



PROJECT
HYDE PARK PLACE
248 UNLEY ROAD, HYDE PARK
MECHANICAL SERVICES
DRAWING
TYPICAL DETAILS AND SECTIONS SHEET 2

NOT FOR CONSTRUCTION PURPOSES UNLESS STAMPED FOR CONSTRUCTION. VERIFY DIMENSIONS AND LEVELS ON SITE BEFORE SETTING OUT. DO NOT SCALE. REFER TO FIGURED DIMENSIONS - IN mm UNLESS OTHERWISE STATED.

Scale	Design: JD/TC	No. in Set	Date
NTS	Drawn: JD	14 of 15	MAY 2019
	Review: TR		

Orig. Size Drawing no. Revision

A1 LCE14462-M301 T1