

OUTSIDE AIR DUCT TO PROVIDE FRESH AIR TO POOL AHU. ENTIRE LENGTH OF DUCT SYSTEM TO BE EXTERNALLY LINED WITH CORROSION PROTECTION. DUCT TO RISE AND ROLLOVER AT HIGH LEVEL IN PLANT ROOM TO ALLOW SPACE FOR POOL WATER TREATMENT PLANT.

2500W x 500H WEATHERPROOF LOUVRE TO SERVE POOL AIR CONDITIONING UNIT AND MAKEUP AIR FOR POOL PLANT. LOUVRE TO BE PROVIDED BY BUILDER.

POOL AHU RETURN AIR DUCT FROM ABOVE. DUCT TO RISE/DROP FROM WITHIN GYM AREA ON LEVEL 2. ENTIRE DUCT SYSTEM IS TO BE INTERNALLY AND EXTERNALLY LINED WITH CORROSION PROTECTION.

PROVIDE OUTSIDE AIR DUCT WITH F5 CLASS BAG FILTER, LOCATED IN VERTICAL DUCT, REFER TO SECTION VIEW ON LCE14462-M301 FOR DETAIL. RETURN AIR DUCT TO BE PROVIDED WITH M5 CLASS PANEL FILTER IN HORIZONTAL DUCT AS SHOWN IN FLOOR PLAN.

POOL AHU SUPPLY AIR DUCT RISING TO LEVEL ABOVE. DUCT TO RISE/DROP FROM WITHIN CAVITY BETWEEN AMENITIES ON LEVEL 2. ENTIRE DUCT SYSTEM IS TO BE INTERNALLY AND EXTERNALLY LINED WITH CORROSION PROTECTION.

POOL AIR CONDITIONING UNIT EXHAUST TO ROLL OUT OF PLANT ROOM AND UTILISE DUCTWORK RISER LOCATED ADJACENT BIN CHUTE RISER. ENTIRE LENGTH OF DUCT IS TO BE INTERNALLY LINED WITH CORROSION PROTECTION. LENGTHS OF DUCT LOCATED IN PLANT ROOM ARE TO BE EXTERNALLY LINED WITH CORROSION PROTECTION.

ALL DUCTWORK PASS THROUGH FIRE RATED WALLS OF SERVICES RISERS AND POOL PLANT ROOM ARE TO BE PROVIDED WITH FIRE DAMPER IN DUCTWORK. PROVIDE ACCESS PANEL IN DUCT ADJACENT TO FIRE DAMPER FOR ACCESS, TYPICAL.

STORAGE UNITS AREA TO BE PROVIDED WITH GENERAL EXHAUST AIR SYSTEM. EGGRATE TYPE GRILLES ARE TO BE PROVIDED IN SIDE WALL AT HIGH LEVEL. DUCTWORK TO RETICULATE TO DISCHARGE AT ROOF LEVEL VIA SERVICES RISER ADJACENT BIN CHUTE. EXHAUST FAN TO BE MOUNTED AT ROOF LEVEL.

DOOR GRILLE TO BE PROVIDED IN STORAGE UNITS SPACE DOOR TO PROVIDE RELIEF AIR PATH FOR EXHAUST SYSTEM.

TOILET EXHAUST AIR SYSTEM SERVING COMMON AREA. EXHAUST DUCT TO ROLL OVER AND RISER TO ROOF LEVEL ABOVE. FIRE DAMPER TO BE PROVIDED IN DUCT THROUGH WALL OF RISER. PROVIDE ACCESS PANEL IN DUCT FOR FIRE DAMPER.

OUTSIDE AIR DUCTWORK TO RETICULATE THROUGH TWO TENANCIES AND PROVIDE DUCTED UNITS WITH OUTSIDE AIR. PROVIDE FIRE DAMPER IN DUCT THROUGH WALL SEPARATING TENANCIES.

3000x200 WEATHER PROOF LOUVRE TO PROVIDE OUTSIDE AIR TO TENANCY. LOUVRE PROVIDED BY BUILDER, TYPICAL. LOUVRE FITTED WITH CUSHION HEAD PLENUM AND BLANKED OFF FOR FUTURE CONNECTION.

GENERAL EXHAUST SYSTEM TO SERVE WATER TREATMENT CHEMICAL STORAGE. EXHAUST DUCTWORK IS TO BE INTERNALLY LINED FOR ENTIRE LENGTH WITH CORROSION PROTECTION. DUCT EXPOSED IN PLANT ROOM IS TO BE EXTERNALLY LINED WITH CORROSION PROTECTION.

POOL AHU TO SERVE POOL AREA ON LEVEL ABOVE. UNIT LOCATED IN PLANT ROOM. ALL EXTERNAL SURFACES OF ALL EXPOSED METAL TO BE EPOXY COATED UPON COMPLETION OF INSTALLATION WITHIN PLANT ROOM.

APARTMENT RANGEHOOD AND TOILET EXHAUST AIR TO DISCHARGE TO BALCONY AREA VIA GRILLE IN SOFFIT CEILING, TYPICAL.

APARTMENT RANGEHOOD AND TOILET EXHAUST AIR TO USE FLAT PACK DUCTWORK AS SHOWN.

FLATPACK EXHAUST SYSTEM TO BE PROVIDED WITH FITTING CONNECTION INTO PROPRIETARY RANGEHOOD. RANGEHOOD TO BE PROVIDED BY BUILDER, TYPICAL.

APARTMENT TOILET/BATHROOM/LAUNDRY EXHAUSTS TO UTILISE EGGRATE TYPE CEILING GRILLE. TOILET/BATHROOM SPACES CONSIST OF "PODDED" ARRANGEMENTS PREVENT ACCESS PANELS. GRILLE LOCATIONS TO BE COORDINATED WITH BATHROOM PODS.

RETURN AIR GRILLES SERVING APARTMENT FAN COIL UNITS TO INCORPORATE FILTERS IN GRILLE FACE, TYPICAL.

ALL APARTMENTS ARE TO BE NATURALLY VENTILATED VIA OPERABLE DOORS AND WINDOWS, TYPICAL.

STUDIO APARTMENTS WITH LIMITED BALCONY SPACE TO HAVE OUTDOOR CONDENSING UNITS LOCATED ON LEVEL 2 ROOF SECTION. REFER TO DRAWING LCE14462-M203.

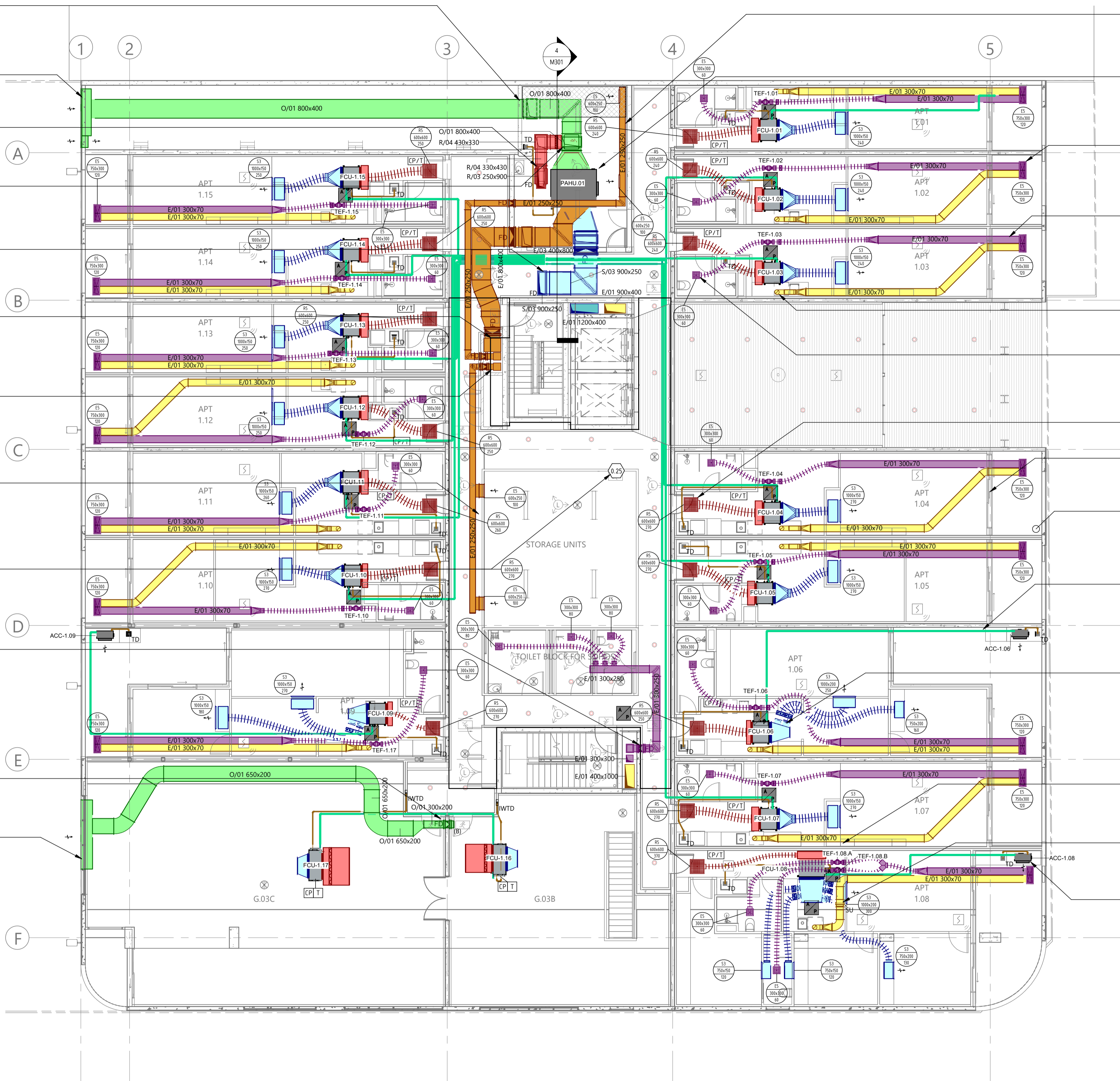
LEVEL 1 APARTMENTS WITH LARGER BALCONY SPACE TO HOUSE OUTDOOR CONDENSING UNIT ON BALCONY AREA, TYPICAL.

APARTMENTS SERVING MORE THAN ONE ZONE ARE TO BE PROVIDED WITH MOTORISED DAMPERS ON SUPPLY AIR DUCTS. TO CONTROL THE OPERATION OF AIR CONDITIONING TO EACH ZONE INDEPENDENTLY.

APARTMENTS TO HAVE CONDENSATE PIPEWORK DRAIN TO TUNDISH IN LAUNDRY BASIN, TYPICAL. TUNDISH TO BE PROVIDED BY HYDRAULICS CONTRACTOR, COORDINATE ON SITE, TYPICAL.

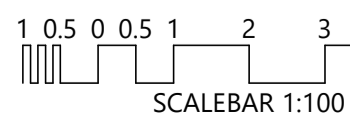
RANGEHOOD EXHAUST DUCT TO STEP UP OVER SUPPLY AIR DUCT IN BULKHEAD.

APARTMENTS WITH LARGER BALCONIES TO HAVE OUTDOOR CONDENSING UNIT LOCATED ON ASSOCIATED BALCONY IN LOUVRED CABINETS PROVIDED BY BUILDER AS SHOWN ON DRAWINGS, TYPICAL. CABINETS TO INCLUDE STORMWATER DRAINAGE FOR CONNECTION OF CONDENSATE DRAINAGE.



T1	TENDER ISSUE	23.05.19	TR
REV	DESCRIPTION	DATE	CHKD
1			
2			
3			
4			
5			
6			
7			
8			
9			
10			
11			
12			
13			
14			
15			
16			
17			
18			
19			
20			
21			
22			
23			
24			
25			
26			
27			
28			
29			
30			
31			
32			
33			
34			
35			
36			
37			
38			
39			
40			
41			
42			
43			
44			
45			
46			
47			
48			
49			
50			
51			
52			
53			
54			
55			
56			
57			
58			
59			
60			
61			
62			
63			
64			
65			
66			
67			
68			
69			
70			
71			
72			
73			
74			
75			
76			
77			
78			
79			
80			
81			
82			
83			
84			
85			
86			
87			
88			
89			
90			
91			
92			
93			
94			
95			
96			
97			
98			
99			
100			

TENDER ISSUE

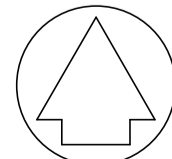


TO BE PRINTED IN COLOUR
THE PURPOSE OF THIS DOCUMENT IS INTENDED TO BE VIEWED OR PRINTED IN COLOUR FOR THE FULL EXTENT OF THE SCOPE OF WORKS TO BE SHOWN.



LUCID
CONSULTING AUSTRALIA
Level 3/169, Pirie St Adelaide SA 5000
Phone: (08) 8407 9700
Email: adelaide@lucidconsulting.com.au

PROJECT
HYDE PARK PLACE
248 UNLEY ROAD, HYDE PARK
MECHANICAL SERVICES
DRAWING
1ST FLOOR MECHANICAL SERVICES ARRANGEMENT



NOT FOR CONSTRUCTION PURPOSES UNLESS STAMPED FOR CONSTRUCTION. VERIFY DIMENSIONS AND LEVELS ON SITE BEFORE SETTING OUT. DO NOT SCALE. REFER TO FIGURED DIMENSIONS - IN mm UNLESS OTHERWISE STATED.
Scale 1:100 Design: JD/TC No. in Set 6 of 15 Date MAY 2019
Drawing no. A1 Revision T1
LCE14462-M202