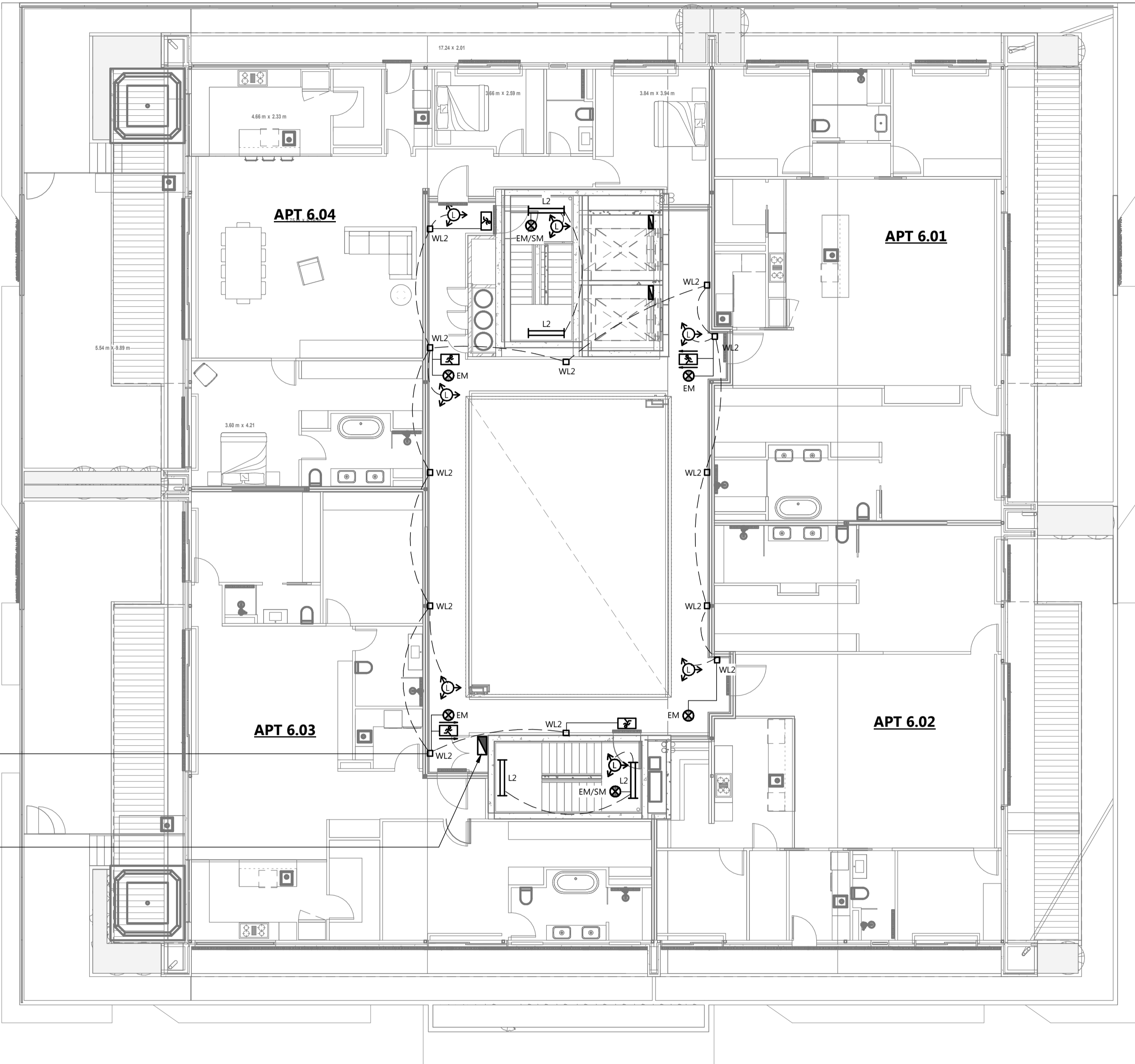


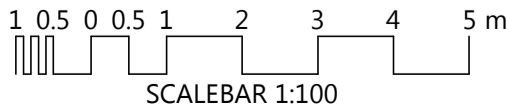
DISTRIBUTION BOARD (DB.SOLAR)



T1	TENDER ISSUE	23.05.19	MS
REV N	DESCRIPTION	DATE	CHK'D

© Copyright Lucid Consulting Australia 23/05/2019 1:29:21 PM

TENDER ISSUE

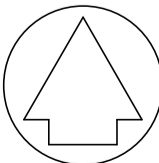


LUCID

CONSULTING AUSTRALIA

Level 3/169, Pirie St Adelaide SA 5000
Phone: (08) 8407 9700
Email: adelaide@lucidconsulting.com.au

PROJECT
HYDE PARK PLACE
248 UNLEY ROAD, HYDE PARK
ELECTRICAL SERVICES
DRAWING
6TH FLOOR LUMINAIRE ARRANGEMENT



NOT FOR CONSTRUCTION PURPOSES UNLESS STAMPED FOR CONSTRUCTION. VERIFY DIMENSIONS AND LEVELS ON SITE BEFORE SETTING OUT. DO NOT SCALE. REFER TO FIGURED DIMENSIONS - IN mm UNLESS OTHERWISE STATED.

Scale	Design: MD	No. in Set	Date
1 : 100	Drawn: PY	20 of 24	MAY 2019
	Review: PAC		

Orig. Size	Drawing no.	Revision
A1	LCE14462-E215	T1