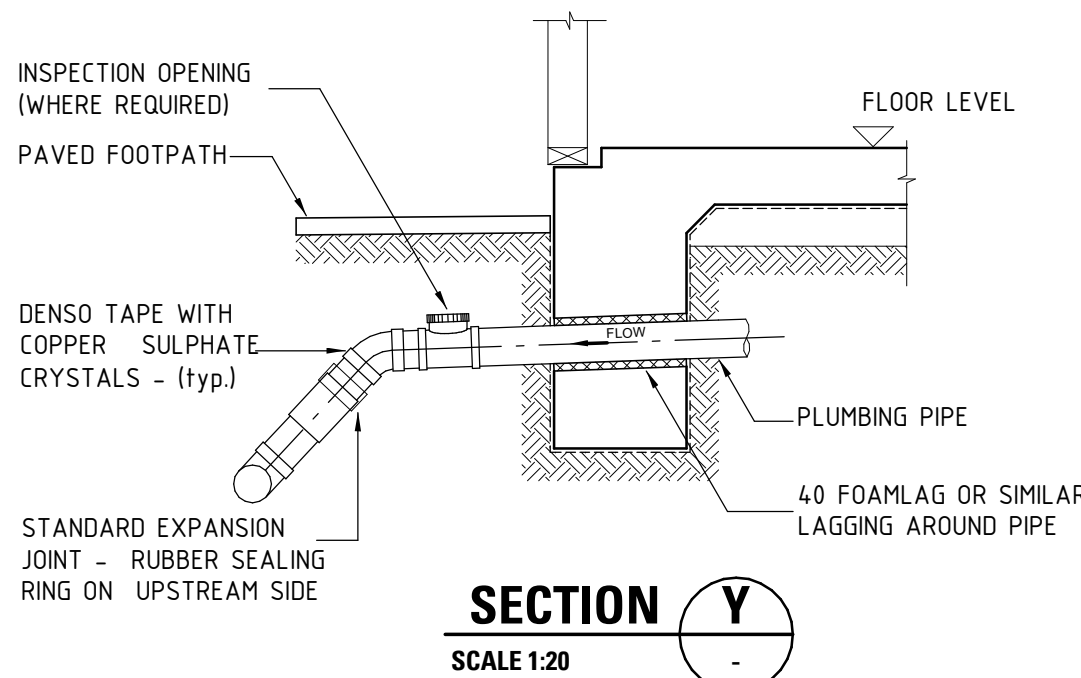


PLUMBING PIPE EXPANSION JOINT DETAIL

PLUMBING PIPE EXPANSION JOINT  
FOR REACTIVE SOILS

DUE TO THE MOISTURE REACTIVE NATURE OF SOILS ON THIS SITE IT IS OUR ADVICE THAT THE PLUMBING INCLUDE STANDARD EXPANSION TYPE JOINT COUPLINGS IN THE FOLLOWING POSITIONS, EXTERNAL TO THE BUILDING:

1. AT EACH 100mm UPVC OR GREATER TAKE-OFF POINT FROM THE BUILDING A FLEXIBLE COUPLING MUST BE FITTED TO THE VERTICAL OR INCLINED RISER FROM THE MAIN WITH AN ADDITIONAL FLEXIBLE COUPLING ADJACENT THE POINT OF CONNECTION OF SAME ONTO THE MAIN RUN ON THE DOWNSTREAM SIDE.
2. JOINTS SO FORMED MUST BE SEALED TO PROTECT AGAINST PLANT ROOT AND GRIME INTRUSION BY WRAPPING WITH DENSO TAPE OVER A 50mm LENGTH BEYOND THE JOINT ON EITHER SIDE. THE DENSO TAPE MUST FIRST BE LAID OUT IN STRAIGHT LENGTHS AND SPRINKLED WITH COPPER SULPHATE CRYSTALS PRIOR TO WRAPPING.

## BASEMENT CONCRETE COLUMN SCHEDULE (west)

MARK	SIZE	REMARKS
BC1	400 x 900	CONCRETE COLUMN. REFER SCHEDULE ON DRG. 20492-S31.
BC2	400 x 900	CONCRETE COLUMN. REFER SCHEDULE ON DRG. 20492-S31.
BC3	600 x 350	CONCRETE COLUMN. REFER SCHEDULE ON DRG. 20492-S31.

## STRIP FOOTING SCHEDULE

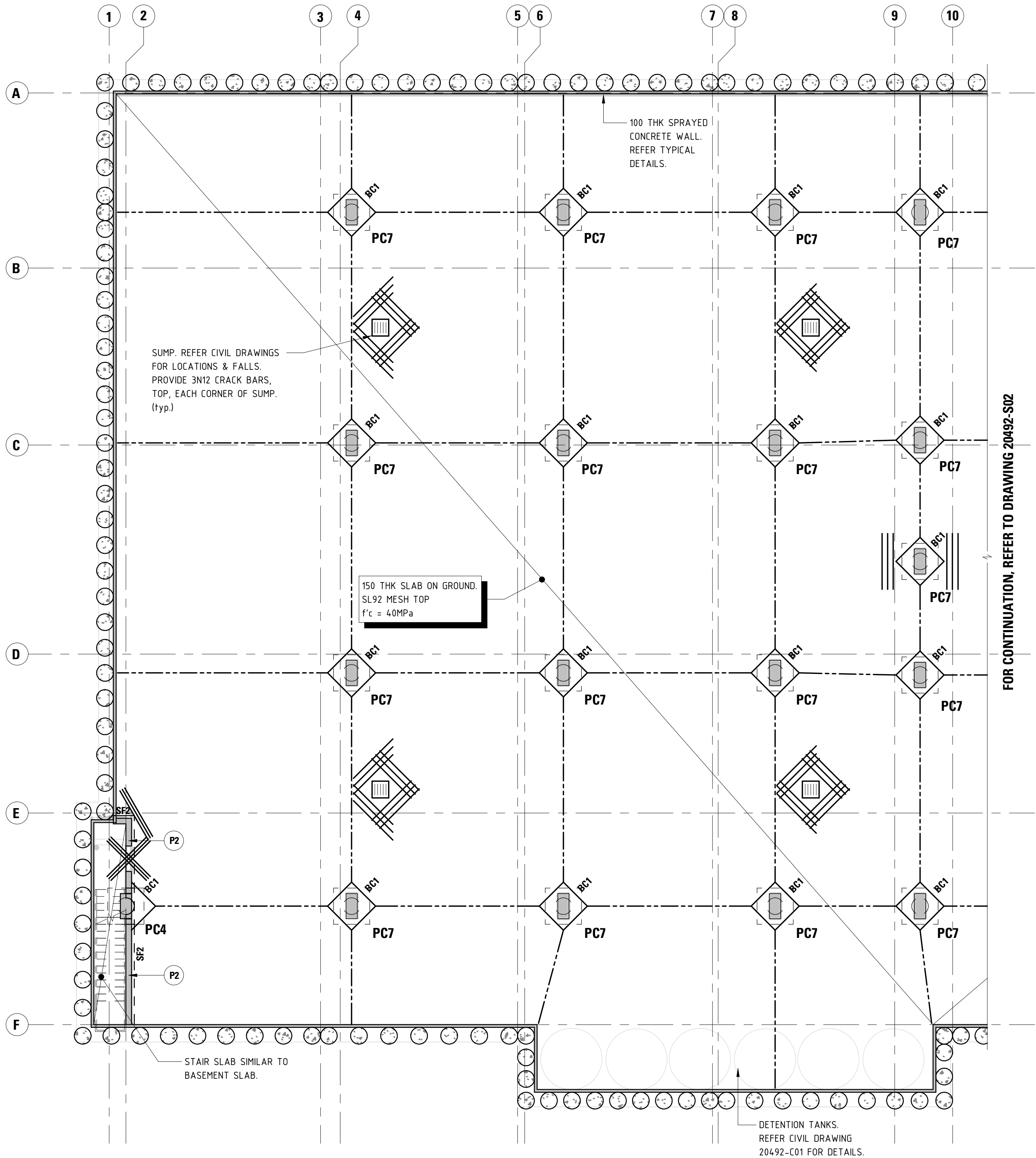
MEMBER	WIDTH	DEPTH	REINFORCEMENT
SF1	400	800	3N16 TOP & BTM, W8-800 LIGS.
SF1a	750	800	3N16 TOP & BTM, W8-800 CTS. FOR INITIAL 400 WIDTH OF FOOTING, UNDER EXTERNAL WALL. PROVIDE ADDITIONAL 2N16 TOP & BTM, W8-800 CTS., 'C' SHAPED LIGATURES FOR REMAINING 350.
SF2	300	600	3N12 TOP & BTM, W6-800 LIGS.

## PILE CAP SCHEDULE

MEMBER	LENGTH	WIDTH	THICKNESS	REINFORCEMENT
PC1	REFER DETAIL	REFER DETAIL	900	N24-200 EW, TOP & BTM. + ADDITIONAL REINFORCEMENT BTM. REFER DETAIL.
PC2	3650	1300	750	N28-150 TOP & BTM. 2/N16-150 LIGS.
PC4	1300	1300	600	N24-200 EW, TOP & BTM.
PC5	6600	4050	1100	N24-200 EW, TOP & BTM.
PC6	6850	6850	1100	N24-200 EW, TOP & BTM.
PC7	1300	1300		N24-200 EW, TOP & BTM.
PC8	3650	1300		
PC9	REFER DETAIL	REFER DETAIL	1100	N24-200 EW, TOP & BTM. + ADDITIONAL REINFORCEMENT BTM. REFER DETAIL.

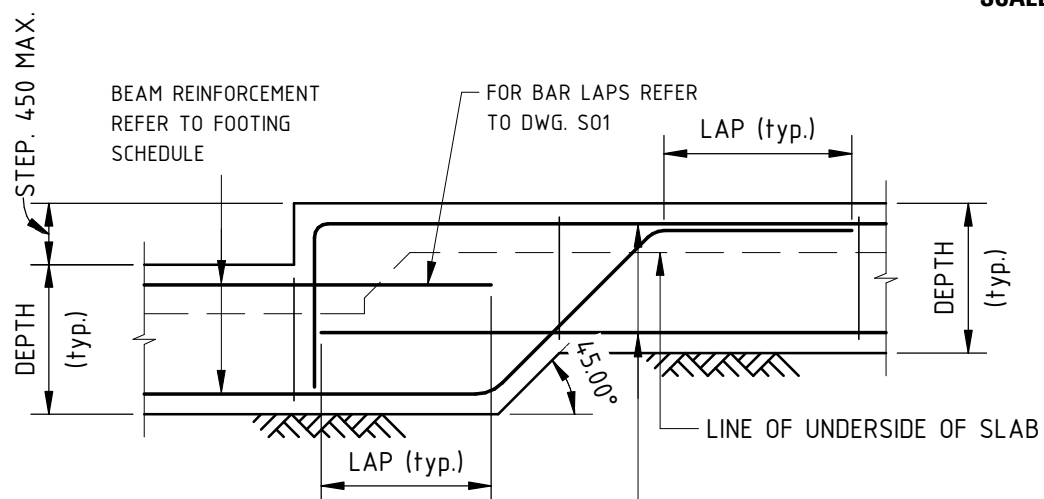
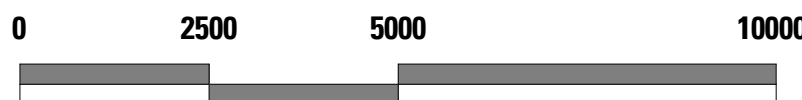
## LEGEND:

- ◊ DENOTES COLUMN ABOVE (BOLD TEXT)
  - ◊ DENOTES COLUMN UNDER
  - DENOTES JOINT IN SLAB. REFER TYPICAL DETAIL ON 20492-S03.
  - /// DENOTES 3-N12 x 2000 LONG CRACK CONTROL BARS TIED TO UNDERSIDE OF MESH.
  - P2 DENOTES PRECAST PANEL TYPE. REFER PANEL SCHEDULE FOR DETAILS.
- NOTE:** FINAL SLAB JOINT LAYOUT TO BE PROPOSED BY THE BUILDER AND SUBMITTED TO THIS OFFICE FOR REVIEW AND APPROVAL.

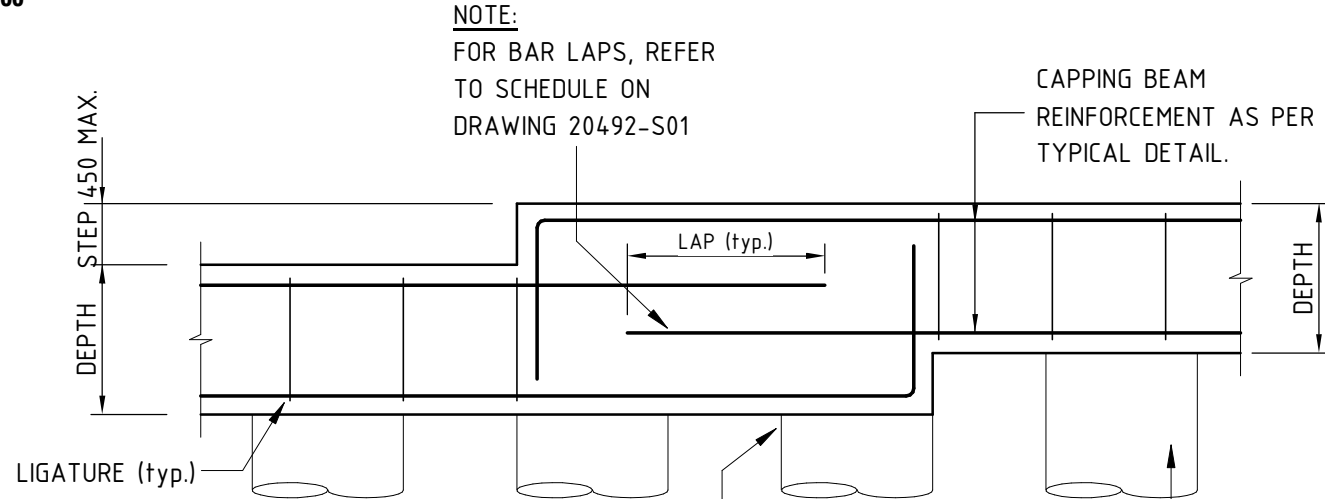
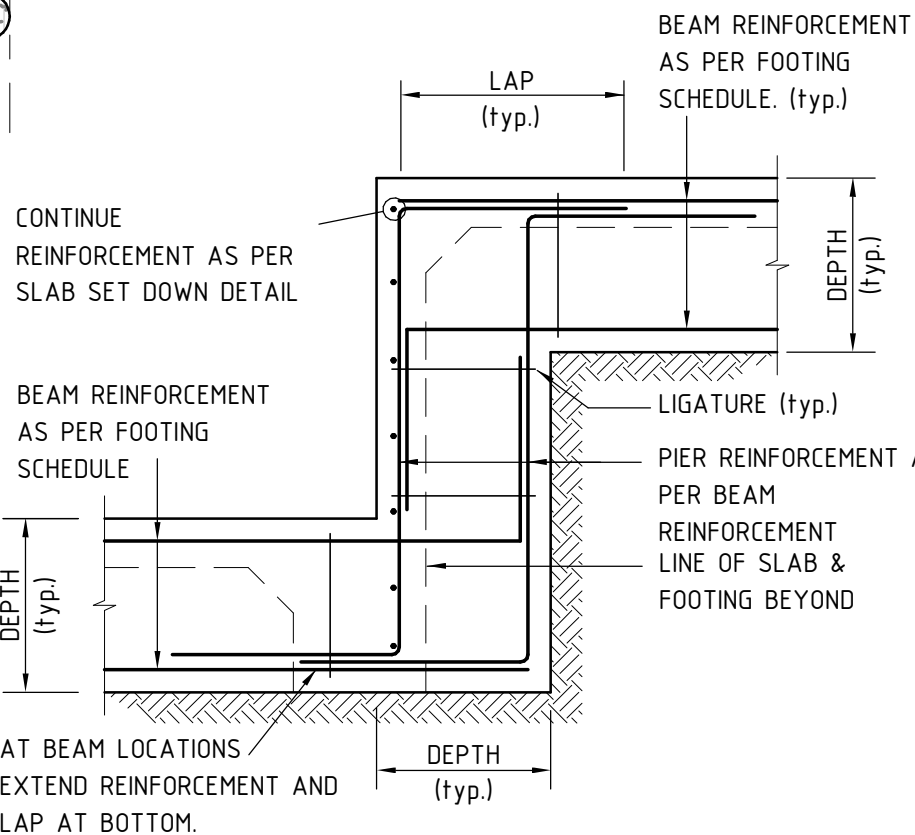


## PART BASEMENT LAYOUT PLAN

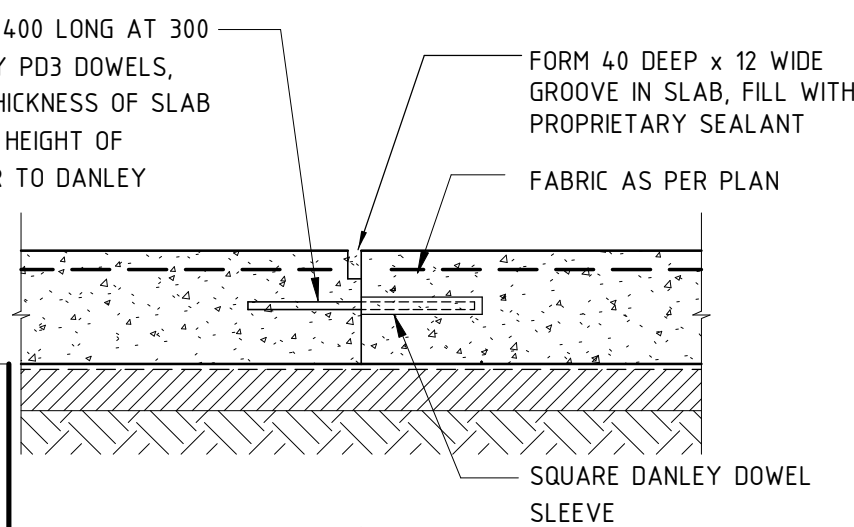
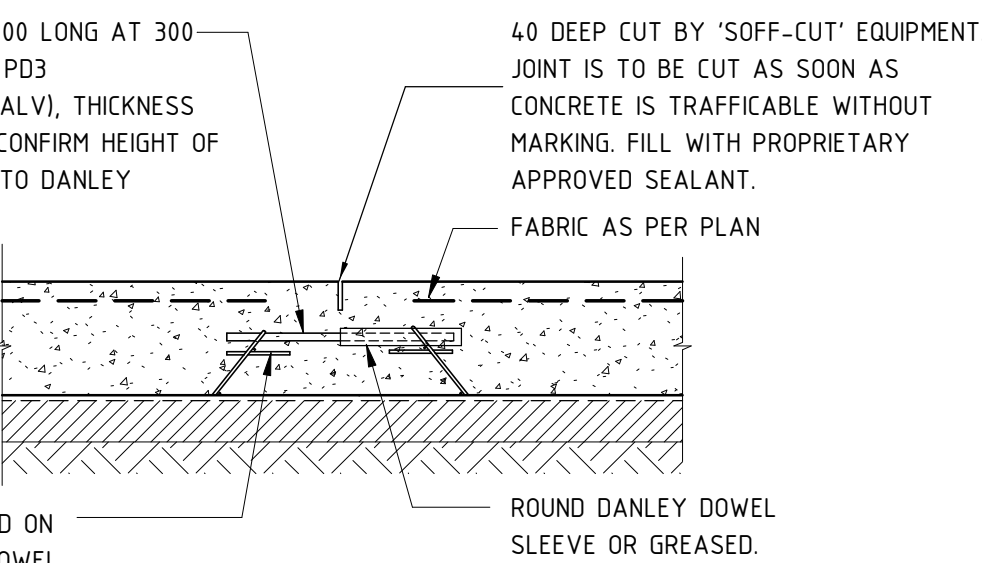
SCALE 1:100

FOOTING BEAM STEP DETAIL  
SCALE 1:20

SCALE 1:100 @ A1

CAPPING BEAM STEP DETAIL  
FOR STEPS LESS THAN 450mm  
N.T.S.DROP PIER DETAIL  
FOR STEPS GREATER THAN 450mm  
(N.T.S.)

- NOTE:**
1. DOWELS TO BE ALIGNED AT 90° TO JOINT & HORIZONTAL
  2. NO DOWELS WITHIN 200mm OF INTERSECTION OF JOINTS
  3. USE BLACK DOWELS FOR INTERNAL SLABS
  4. USE GALVANISED DOWELS FOR EXTERNAL SLABS
  5. ENSURE THE 4mm TRAVEL BARS ARE CUT PRIOR

SLAB JOINT DETAIL  
NOT TO SCALE  
(WHERE SLAB POUR IS STAGED)SLAB JOINT DETAIL  
NOT TO SCALE  
(WHERE SLAB POUR IS CONCURRENT)

FOR CONSTRUCTION

07.02.20	TIE FOOTINGS DELETED & SCHEDULE REVISED	01
Date	Revision	Issue

**PT Design**

PT Design Associates Pty Ltd 141-149 Hould St Adelaide SA 5000  
T [08 8412 4300] F [08 8232 4311] E [ptdesign@ptdesign.net.au]

Designer	RW	Drawn	82 & MM
Approved	Approver	Date	07/02/2020 2:19:05 PM
			Sheet

Project

**HYDE PARK PLACE  
248 UNLEY ROAD,  
HYDE PARK SA**

Client

**CITIFY & BFC PTY LTD**

Drawing Title

**BASEMENT LAYOUT  
PLAN**

Drawing Number

**20492-S03**

Scale

As indicated

Issue

**01**