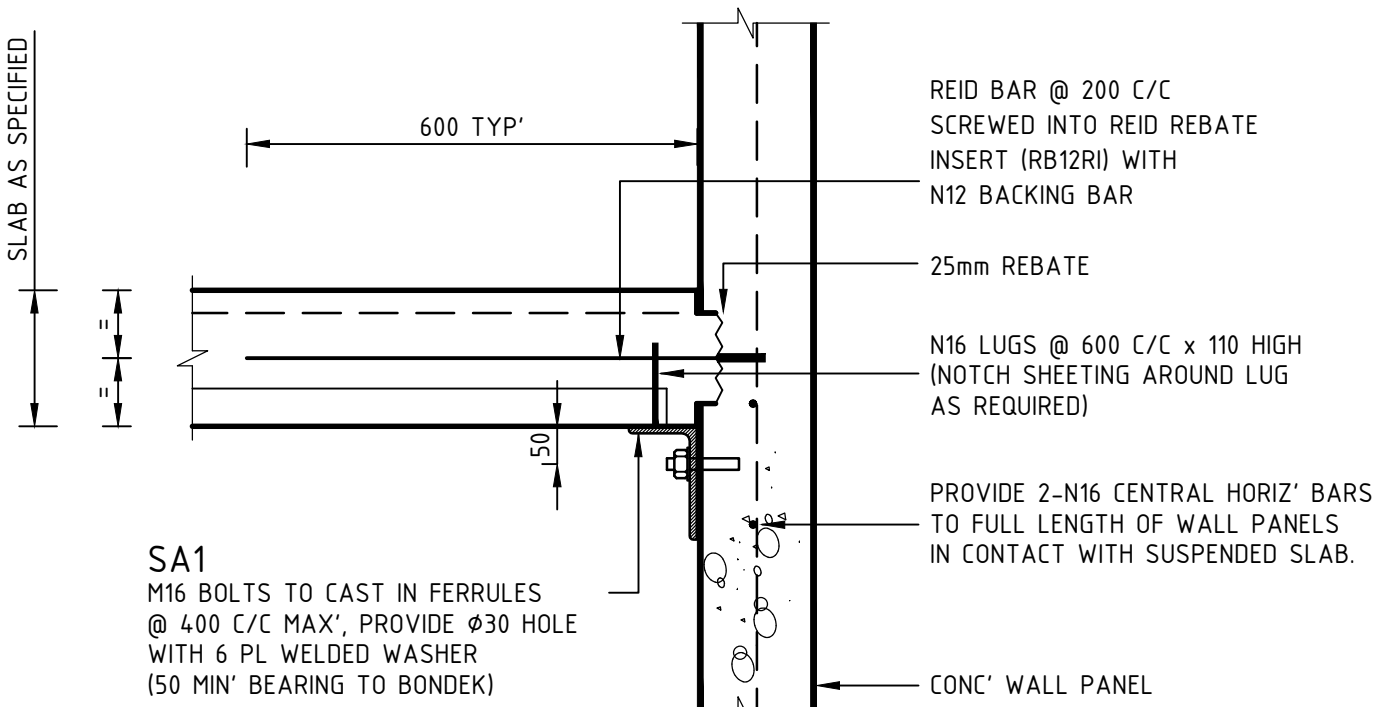


REFER DRAWING S0 FOR GENERAL NOTES

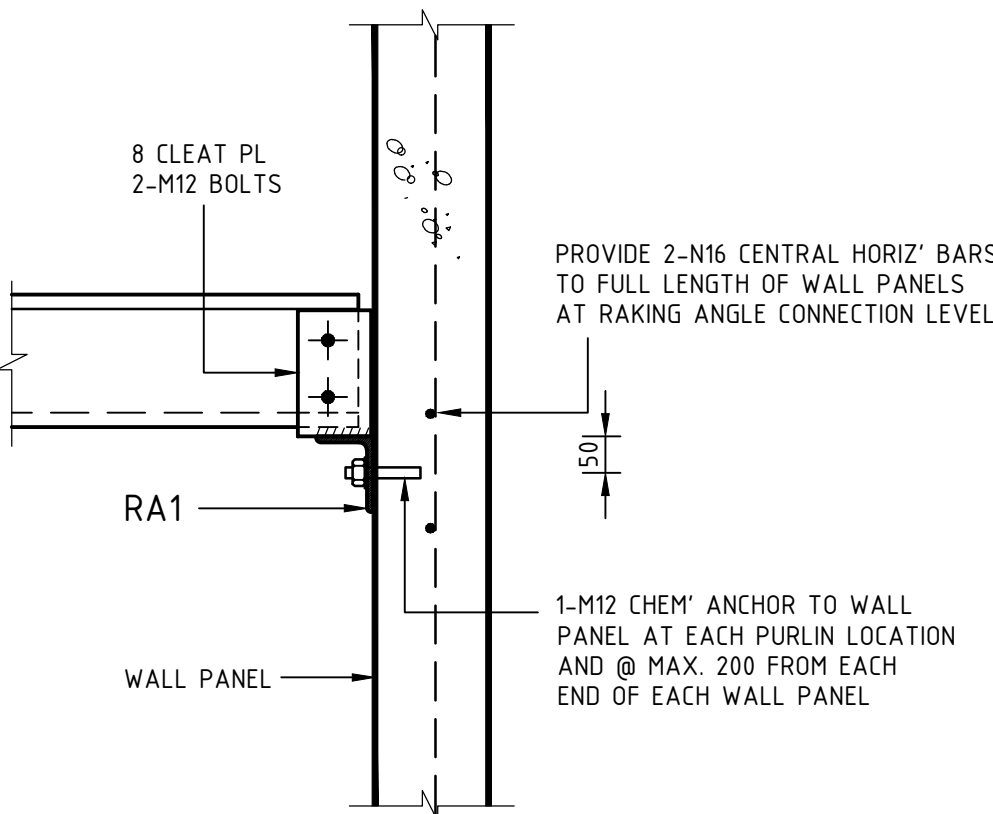
MEMBER SCHEDULE		
MARK	MEMBER	REMARKS
3.C1	89 x 89 x 5 SHS	COLUMN
RA1	100 x 75 x 8 UA	RACKING ANGLE - REFER TO DETAIL
RB1	200 UB 22	ROOF BEAM
RB2	150 PFC	ROOF BEAM
RB3	150 PFC	ROOF BEAM
RB4	125 PFC	ROOF BEAM
RB5	250 PFC	ROOF BEAM
RB6	150 x 50 x 3 RHS	ROOF BEAM
RB7	125 PFC	10 PLATE, 2-M16 CHEM SET END CONNECTION
S1	Ø76 x 3.2 CHS	STRUT
TB1	125 PFC	TIE BEAM 'ON FLAT'
BR1	65 x 65 x 6 UA	ROOF BRACING - REFER TO DETAIL
P2	Z100-15	LAPPED PURLINS @ 1200 C/C MAX, 1 ROW BRIDGING @ MIDSPAN.
P3	C100-19	PURLINS @ 1000 C/C MAX, 1 ROW BRIDGING

- STEELWORK NOTES:
- ALL STEELWORK TO BE GRADE 300+
  - ALL STEEL HOLLOW SECTION MEMBERS TO BE GRADE C450+ UNO.
  - ALL BOLTS TO BE GRADE 8.8/S. UNO
  - ALL ANCHORS TO BE HILTI HY200 INSTALLED IN ACCORDANCE WITH MANUFACTURERS SPECIFICATIONS.
  - ALL EXPOSED STEELWORK TO HAVE A PROTECTIVE BARRIER THAT IS ADEQUATE FOR THE RELEVANT EXPOSURE CONDITIONS.
  - PROVIDE WELDED SLEEVES TO ALL HOLLOW SECTION MEMBERS AT BOLTING LOCATIONS.
  - ALL SECONDARY FRAMING, TRIMMERS, CLADDING SUPPORT MEMBERS AND CLEATS TO BE PROVIDE AS REQUIRED IN ACCORDANCE WITH THE CLADDING MANUFACTURERS AND THE ARCHITECTURAL SPECIFICATIONS.



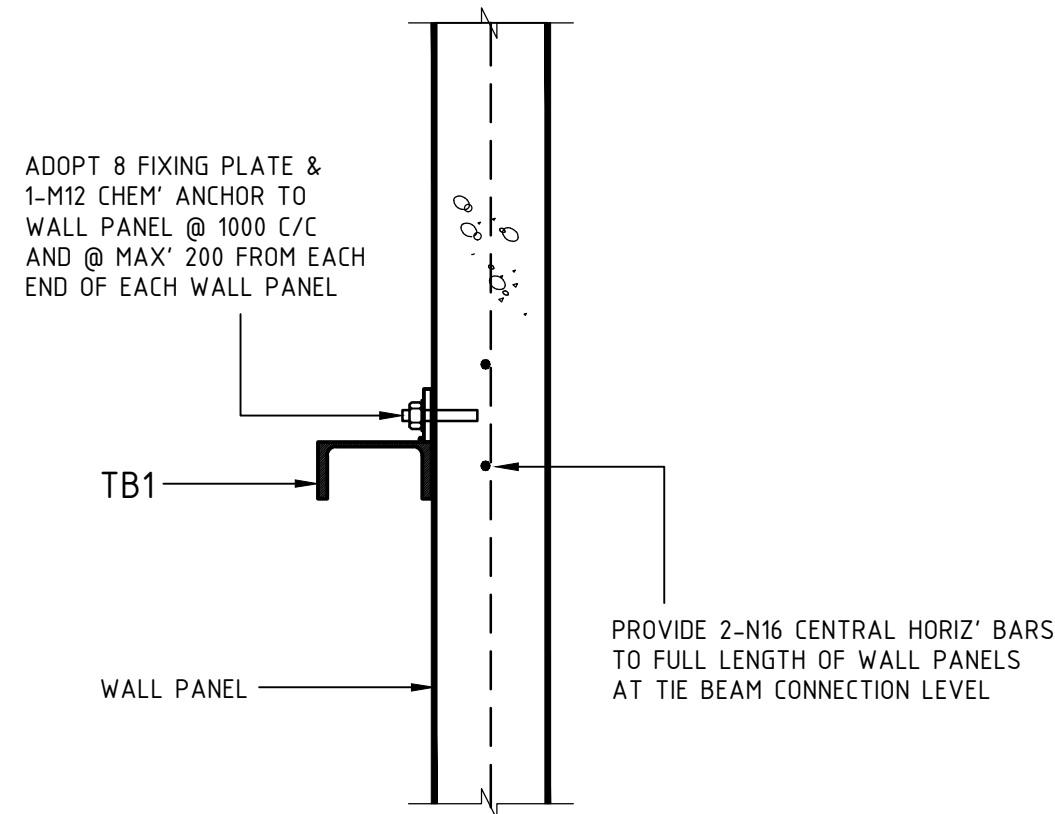
TYP' SEATING ANGLE SA1  
TO WALL PANEL CONNECTION DETAILS

1:10



TYPICAL RAKING ANGLE RA1  
CONNECTION DETAIL

1:10

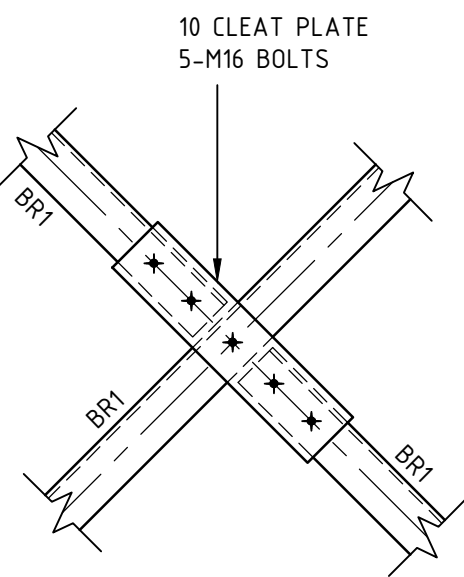


TYPICAL TIE BEAM TB1  
CONNECTION DETAIL

1:10

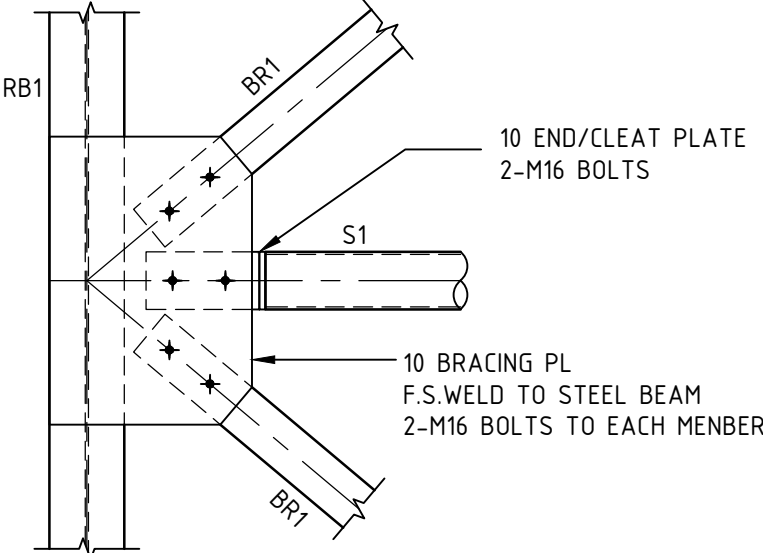
ROOF PURLIN PLAN

1:100



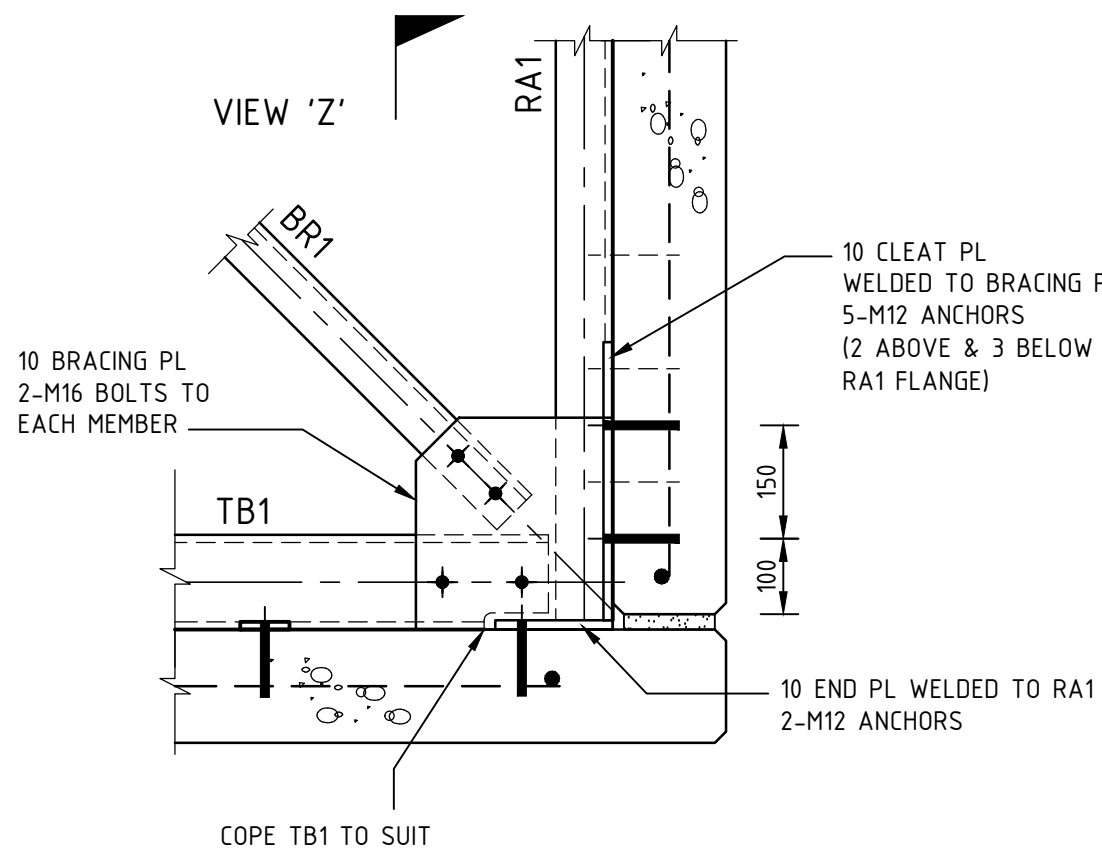
DETAIL 1  
S104

1:10



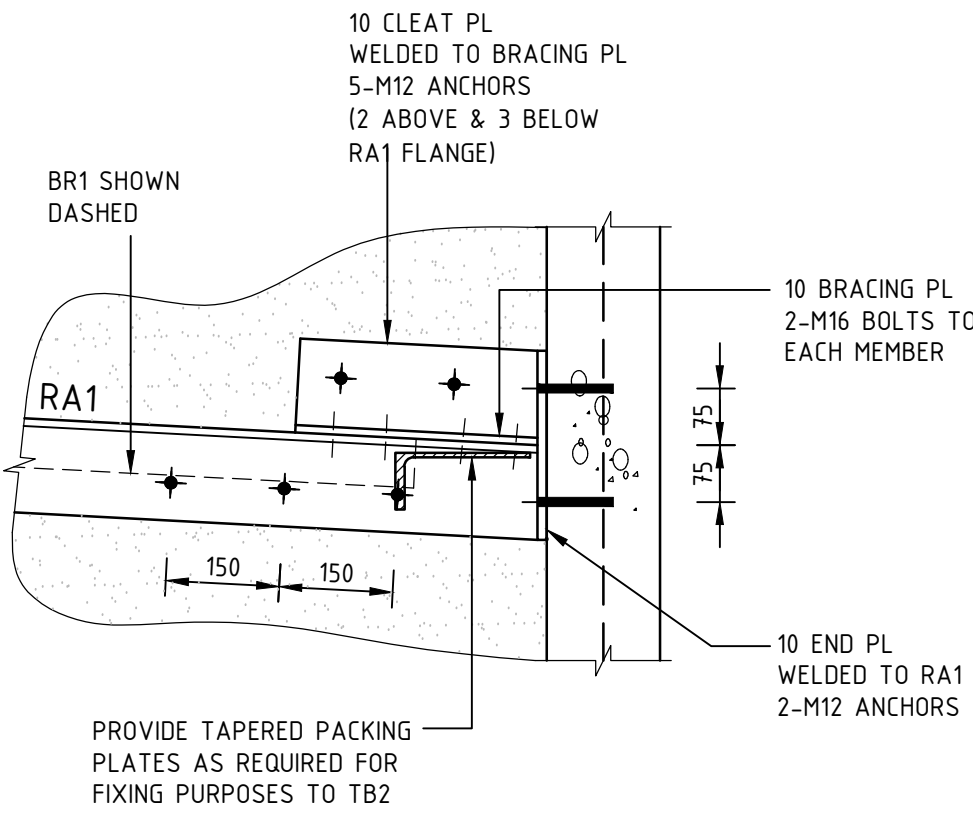
DETAIL 2  
S104

1:10



DETAIL 3  
S104

1:10



VIEW FROM ARROW 'Z'

1:10

C	AS NOTED	JVI	ENG	02.07.19
B	AS NOTED	JVI	ENG	14.06.19
A	FOR APPROVAL ISSUE	JVI	ENG	29.04.19
No	REVISION	DRAWN	CHE'KD	DATE

PROJECT  
**PROPOSED APARTMENTS**  
**AT: 11-13 WEST STREET,**  
**HINDMARSH, SA.**  
**FOR: KEY LARGO WATERS**  
**PTY LTD**

DRAWING TITLE  
**ROOF PLAN**

Civil  
Environmental  
Mechanical  
Fire  
Lifts

Structural  
Geotechnical  
Electrical  
Hydraulics  
Green ESD

Level 6, 100 Pirie Street,  
Adelaide SA 5000  
Telephone 08 8238 4100  
Facsimile 08 8410 1405  
Berri Office: 25 Vaughan Terrace,  
Berri SA 5343

**TMK**  
CONSULTING ENGINEERS

SCALES		COPYRIGHT RESERVED
AS SHOWN		
DRAWN	JVI	DRAWING No. <b>1903075-S104/C</b>
DATE	APR '19	
ENGINEER	ASM	
CHECKED	ASM	