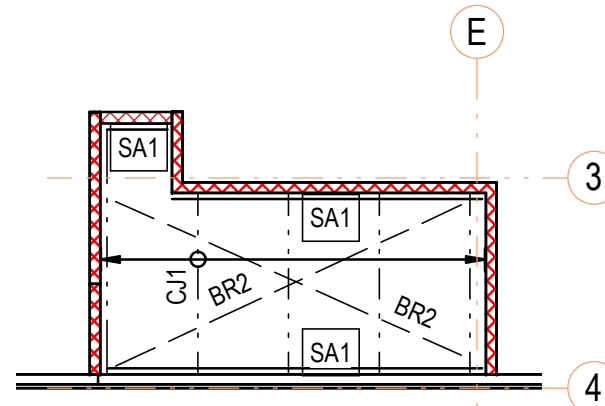
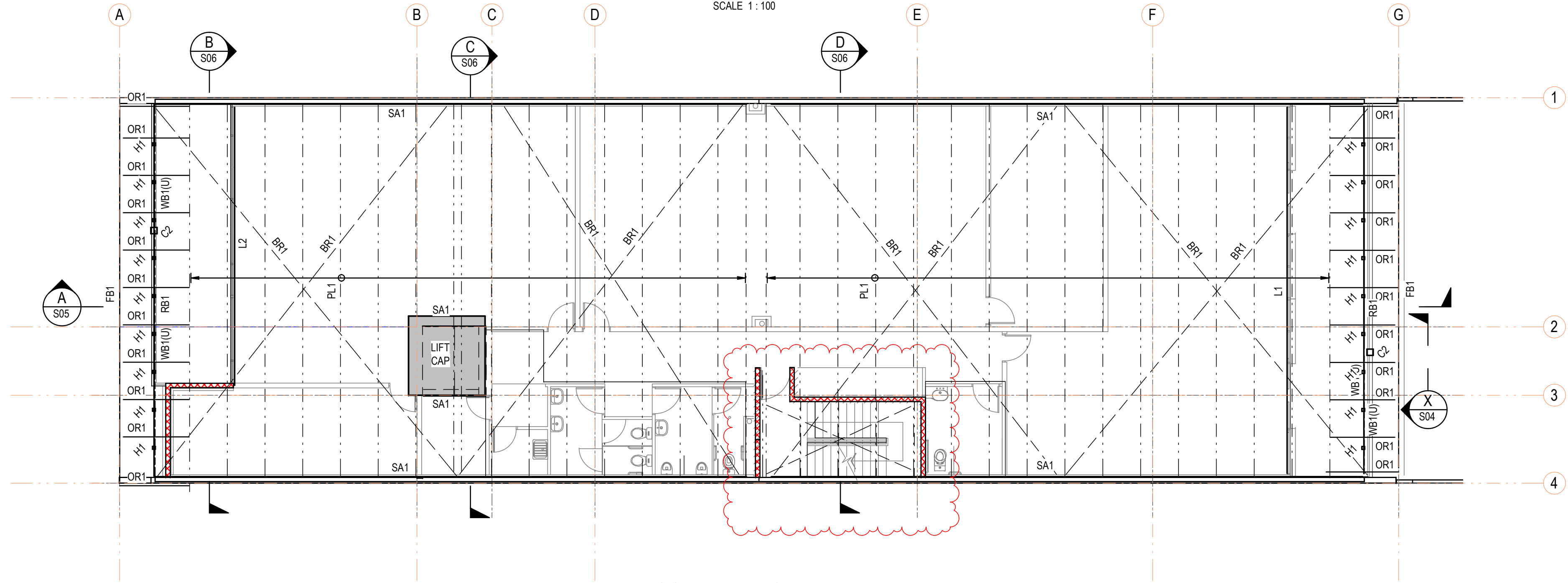


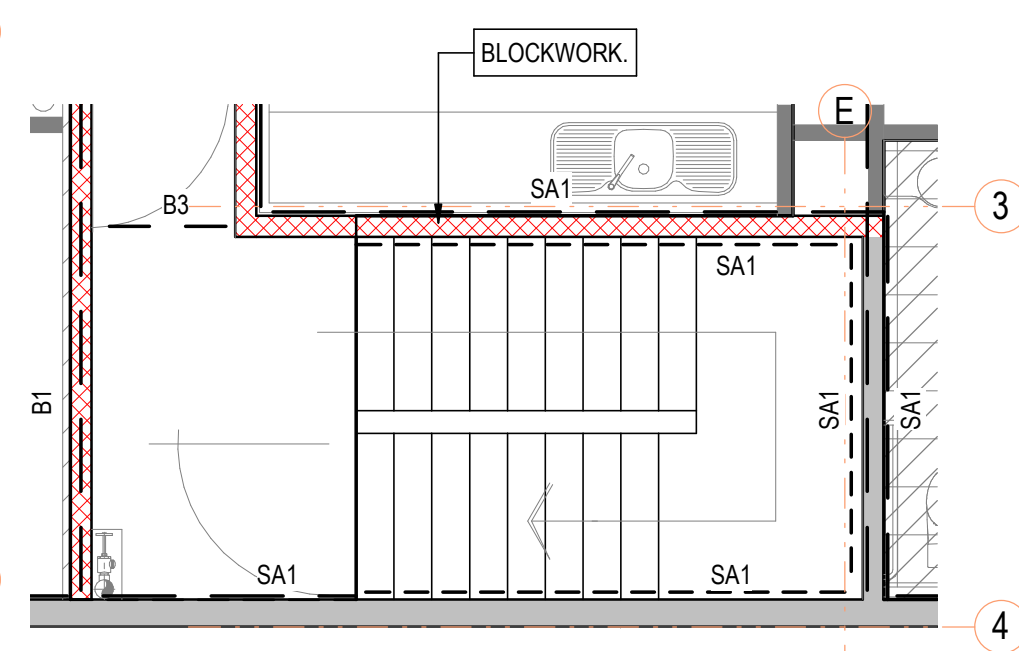
THIRD FLOOR LAYOUT PLAN  
SCALE 1:100



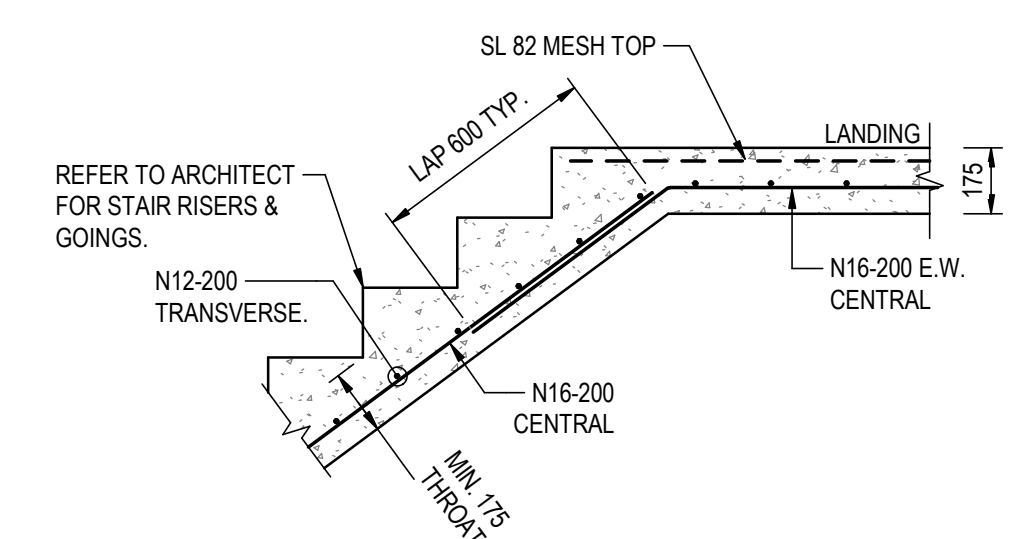
STAIR SHAFT CEILING PLAN  
SCALE 1:100



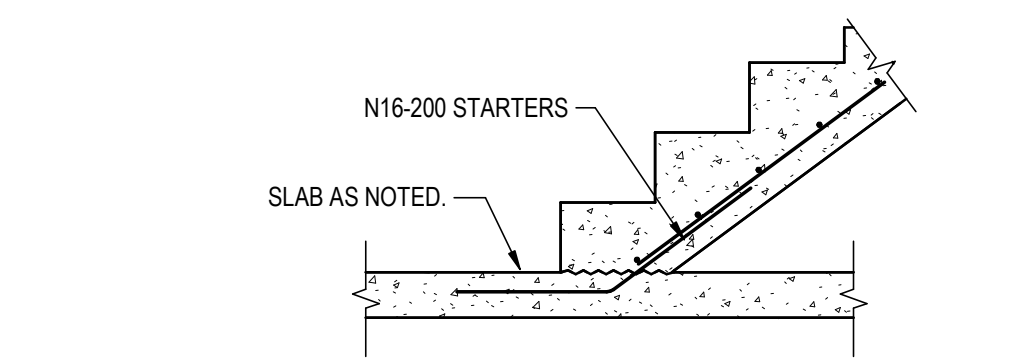
ROOF FRAMING PLAN  
SCALE 1:100



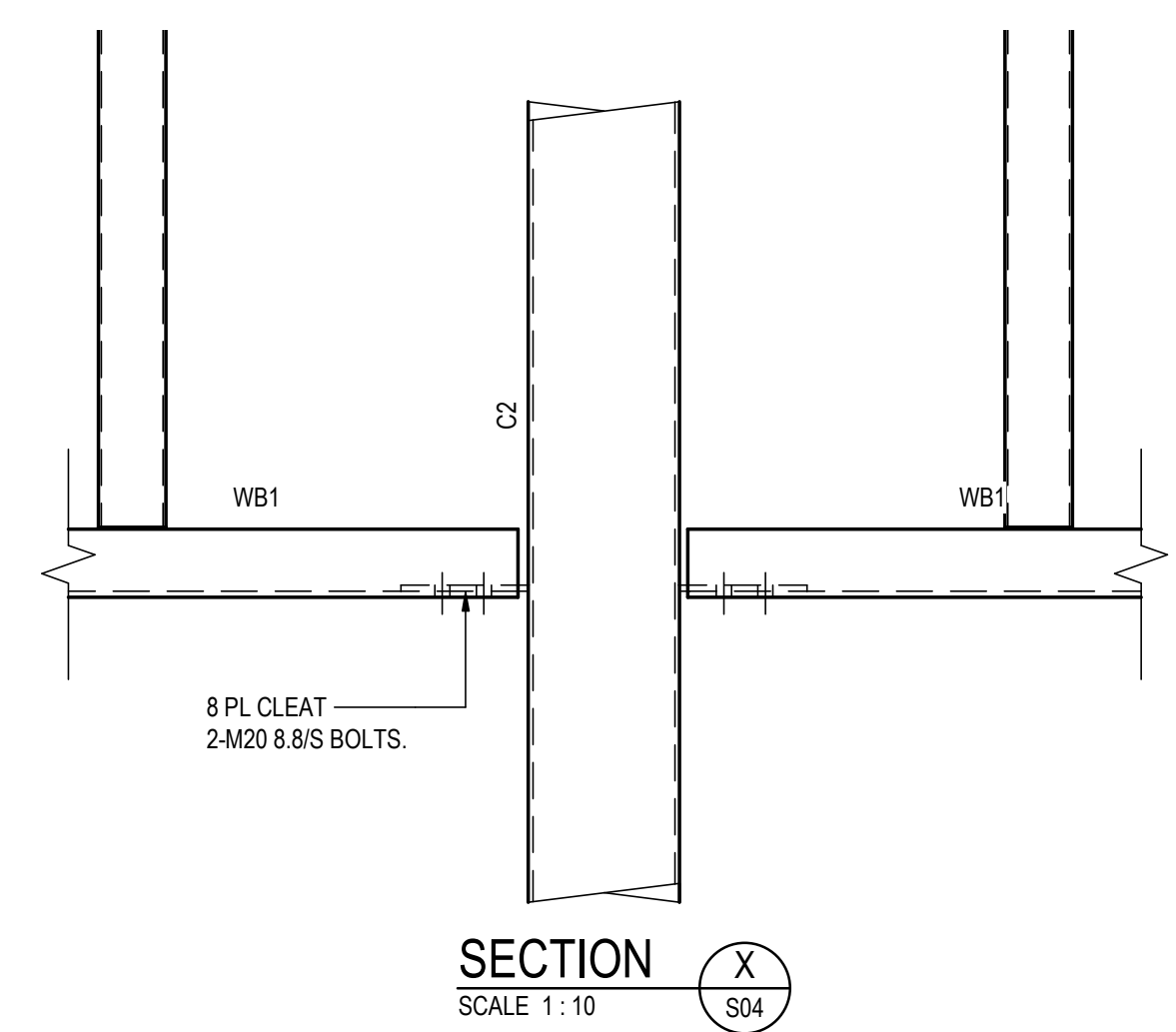
TYPICAL STAIR PLAN  
SCALE 1:50



TYPICAL STAIR DETAIL  
SCALE 1:20



TYPICAL STAIR TO SLAB DETAIL  
SCALE 1:20



SECTION  
SCALE 1:10

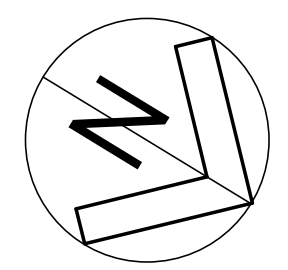
CONCRETE LEGEND

- WET AREA OR BALCONY SET DOWN TO BUILDING. 50mm. REFER BALCONY DETAILS FOR FALLS.
- INDICATES 150mm CONCRETE SLAB ON 100mm COMPACTED QUARRY RUBBLE & DPM. SL92 TOP AND SL72 BOTTOM. REFER TO CIVIL DRAWINGS FOR TOP OF SLAB LEVELS AND SLOPES.
- INDICATES 170mm CONCRETE SLAB ON KF57 1.0 BMT. SL82 TOP FACE. REINFORCEMENT AS SHOWN OR N16-200 U.N.O. 1-N16 BOTTOM EACH PAN. 35mm COVER.
- INDICATES 170mm OFF FORM CONCRETE SLAB. SL82 TOP FACE AND BOTTOM FACE. 35mm COVER.
- INDICATES 130mm MIN CONCRETE SLAB ON KF57 1.0 BMT. SL82 TOP FACE. REINFORCEMENT AS SHOWN OR N16-200 U.N.O. 1-N16 BOTTOM EACH PAN. 35mm COVER. BALCONY SLAB TAPERS 1:100 FALL.
- INDICATES 120mm CONCRETE SLAB ON KF57 1.0 BMT. SL82 TOP FACE. REINFORCEMENT AS SHOWN OR N16-200 U.N.O. 1-N16 BOTTOM EACH PAN. 35mm COVER. INDICATES 130mm MIN OFF FORM CONCRETE SLAB. SL82 TOP & BOTTOM. ADDITIONAL BARS AS NOTED ON PLAN. BALCONY SLAB TAPERS 1:100 FALL.
- PROVIDE 3-N12-T CRACK CONTROL RODS. 2000mm LONG UNDER MESH AT ALL RE-ENTRANT CORNERS. TYPICAL.
- INDICATES STEP IN CAPPING BEAM. REFER TO DETAILS.
- INDICATES DIRECTION OF SHEETING.
- INDICATES PENETRATION THROUGH SLAB.
- INDICATES DIRECTION TOP BARS OF MESH MUST RUN. ADDITIONAL TOP REINFORCEMENT TO RUN IN LINE WITH MESH.
- INDICATES STEP IN SLAB
- INDICATES RAMP. REFER TO ARCHITECTS DRAWINGS.
- INDICATES SAW CUT JOINT. REFER TYPICAL DETAIL.
- INDICATES DOWELLED JOINT. REFER TYPICAL DETAIL.
- INDICATES PROPPING PIERS. ø300mm 1.0m DEEP MASS CONCRETE. MAX 3.0m C/C SET IN 3.5m.
- INDICATES 180THK PRECAST WALLS.
- INDICATES 140 BLOCKWORK WALLS. N12-600 CENTRAL E.W.
- INDICATES ARCHITECTURAL NON-LOADBEARING STUDWORK.
- INDICATES SUMP LOCATIONS. REFER TO CIVIL DRAWINGS.
- INDICATES 180THK CAST IN SITU WALL. N16-150 (V) BARS. N12-400 (H) BARS INTERNAL FACE, SL72 EXTERNAL FACE.  $f_c = 32 \text{ MPa}$ . PROP UNTIL GROUND FLOOR SLAB IS POURED AND HAS ACHIEVED FULL DESIGN STRENGTH.
- INDICATES BEAM UNDER.

FRAMING SCHEDULE

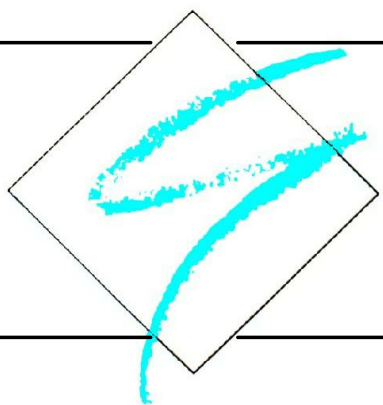
MEMBER	SIZE	REMARKS
B1	610UB101	COMPOSITE FLOOR BEAM - ø19mm STUDS @ 250 CTS. PRE-CAMBER 40mm.
B2	380PFC	FLOOR BEAM
B3	310UB32	FLOOR BEAM
B4	530UB82	COMPOSITE FLOOR BEAM - ø19mm STUDS @ 220 CTS. NO PRECAMBER
B5	200PFC	FLOOR BEAM
B6	310UC137	COMPOSITE FLOOR BEAM - ø19mm STUDS @ 200 CTS. PRE-CAMBER 40mm.
B7	610UB125	COMPOSITE FLOOR BEAM - ø19mm STUDS @ 230 CTS. PRE-CAMBER 40mm.
B8	360UB57	FLOOR BEAM
B9	530UB82	FLOOR BEAM
BR1	Ø20 ROD BRACING	ROOF BRACING FIX TO SEATING ANGLE WITH 1-M20 8/8'S BOLT. PROVIDE HANGER OFF OF PURLINS TO REDUCE SAG.
BR2	Ø16 ROD BRACING	ROD BRACING FIX TO SA1 WITH 1-M16 8/8'S BOLT.
C1	200x200x5.0 SHS	COLUMN
C2	200x200x5.0 SHS	COLUMN
C3	250PFC	FIXED TO FLOOR SLAB AT BOTH LEVELS
CJ1	210010	CEILING JOISTS AT 1200 CTRS. PL6 CLEAT. 2-M12 4/6'S BOLTS TO SA1
FB1	C30024	FASCIA BEAM FIXED TO OUTRIGGERS
FB2	360UB45	FLOOR BEAM
FB3	250UB26	FLOOR BEAM
H1	89x89x3.5 SHS	HANGER @ 1200 CTS
L1	360UB45	LINTEL
L2	310UB32	LINTEL
OR1	Z30030	OUTRIGGER AT 1200 CTRS
PL1	Z35030	PURLINS AT 1500 CTRS
RB1	300PFC	ROOF BEAM
SA1	90x90x6 EA	SEAT ANGLE
WB1	250PFC	WALL HEAD ON FLAT

Issue	Date	Amendment
F	23/8/18	CERTIFICATION
E	22/6/18	CERTIFICATION - LIFT CHANGES
D	29/5/18	CERTIFICATION
C	15/5/18	PRELIMINARY WIP
B	26/4/18	PRELIMINARY WIP
A	29/3/18	PRELIMINARY WIP



ISSUED FOR CERTIFICATION  
NOT FOR CONSTRUCTION

**GINOS ENGINEERING** PTY LTD  
Consulting Engineers  
A.B.N. 22 621 716 121  
2nd Floor, 185 Victoria Square  
Adelaide SA 5000  
Telephone: (08) 8212 4900  
Facsimile: (08) 8212 3829



97 KING WILLIAM STREET  
KENT TOWN SA  
ANTHONY DONATO ARCHITECTS  
THIRD FLOOR AND ROOF FRAMING LAYOUT PLAN

Drawn SGP Scale As indicated on A1  
Design JT Drawing Number  
Approved  
Date MARCH 18  
2018-7161 S04