

CONSUMER MAINS IN 1x100mm HEAVY DUTY UNDERGROUND ELECTRICAL CONDUIT.
RETICULATING FROM UNFUSED SERVICE PIT LOCATED ON WILLIAMSON LANE.

PROVIDE MOUNTING BRACKET FOR SIGNAGE ABOVE EGRESS GATE.

450mm WIDE ELECTRICAL CABLE TRAY.

MAIN SWITCHBOARD (MSB)

- PROVIDE MINIMUM 600mm CLEARANCE IN FRONT OF DOOR SWING.
- DOORS TO OPEN MINIMUM 120° IN ACCORDANCE WITH SA POWER NETWORKS SERVICES AND INSTALLATION RULES.

FINAL LOCATION OF 2 OFF HOT WATER UNIT ISOLATORS
AND 1 OFF CIRCULATION PUMP ISOLATOR TO BE
CO-ORDINATED WITH HYDRAULIC SERVICES CONTRACTOR
ON SITE.

COMMON SERVICES RISER. (1200mmx110mm)

PROVIDE 100mm² FIRE RATED CAB
PENETRATION FOR NBN CABLING.

PROVIDE 100mm² FIRE RATED CABLE PENETRATION FOR NBN CABLING.

FINAL LOCATION OF JACKING PUMP ISOLATOR AND DIESEL PUMP ISOLATOR TO BE CO-ORDINATED WITH FIRE SERVICES CONTRACTOR ON SITE.

MECHANICAL TOILET EXHAUST FAN EQUIPMENT TO
BE POWERED VIA LOCAL LIGHTING CIRCUIT.
ELECTRICAL CONTRACTOR TO PROVIDE POWER,
MECHANICAL CONTRACTOR TO PROVIDE RUN-ON
TIMER.

600mm WIDE COMMUNICATIONS CABLE TRAY.

NBN/COMMUNICATIONS ENCLOSURE

- CONTAINS NBN Co. CABLE TRANSITION LOCATION (CTL) EQUIPMENT

- PROVIDE ENCLOSURE TO HOUSE EQUIPMENT

- PROVIDE ALL POWER SUPPLY REQUIREMENT

CONTROL EQUIPMENT AS REQUIRED.

1xP50 UNDERGROUND COMMUNICATIONS CONDUIT CAPPED AT
BOUNDARY FOR FUTURE CONNECTION WORKS BY NBN. PROVID
DRAW WIRE FOR ENTIRE LENGTH OF CONDUIT AND LOCATION
MARKER AT BOUNDARY.

— PROVIDE IN GROUND CONDUITS IN GROUND FROM STRUCTURAL COLUMN TO ROLLER DOOR ISOLATOR FOR POWER AND COMMUNICATIONS CABLE ACCESS.

— ELECTRICAL AND COMMUNICATIONS SERVICE RISER.

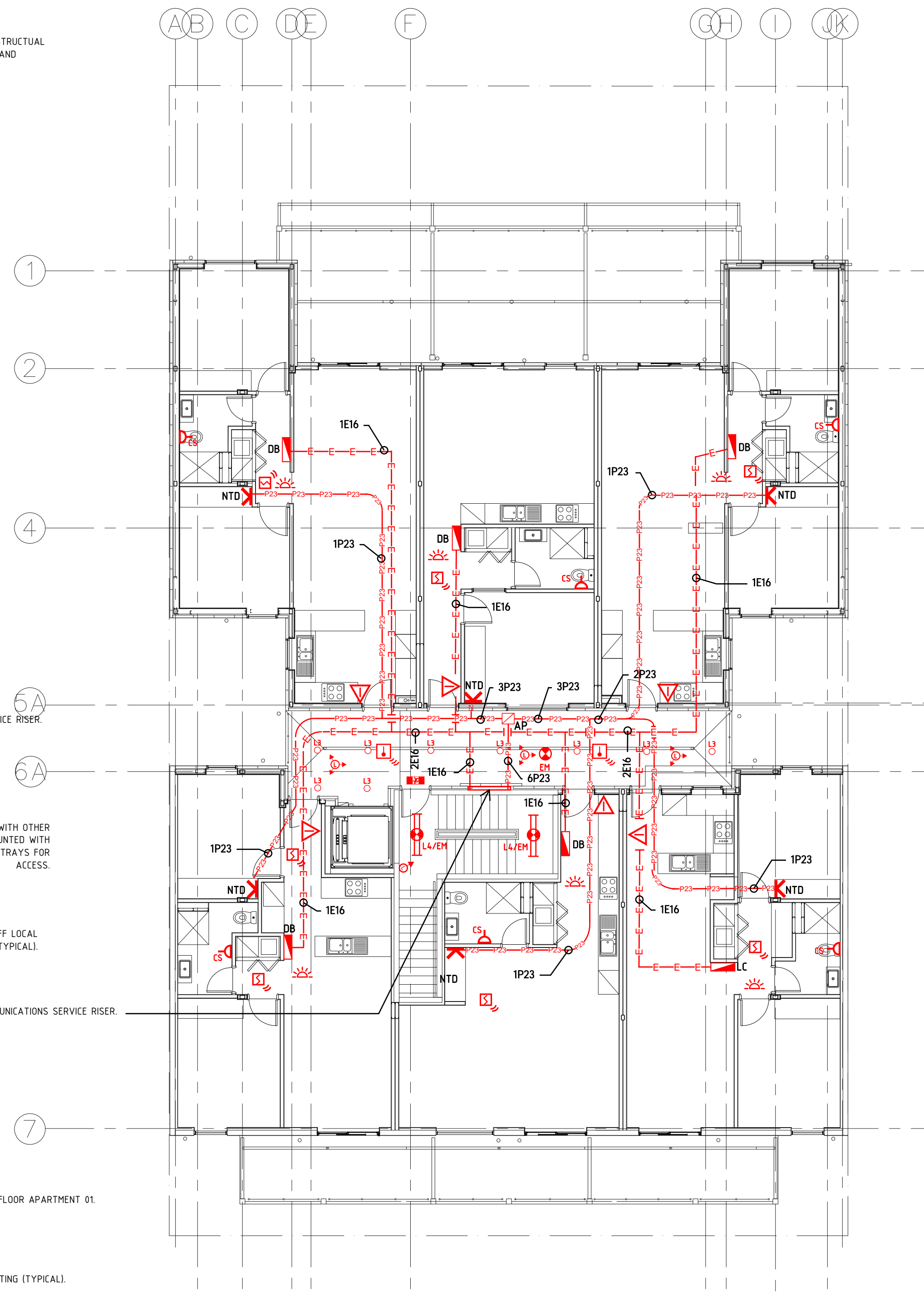
COORDINATE CABLE TRAY PATHWAYS WITH OTHER SERVICES. ENSURE CABLE TRAYS ARE MOUNTED WITH MINIMUM CLEARANCE OF 100mm ABOVE TRAYS FOR ACCESS.

TOILET EXHAUST FAN TO BE POWERED OFF LOCAL
LIGHTING CIRCUIT (TYPICAL).

ELECTRICAL AND COMMUNICATIONS SERVICE RISER.

— STAND ALONE INTERCOM FOR GROUND FLOOR APARTMENT 01.

PROVIDE PE CELL FOR EXTERNAL LIGHTING (TYPICAL).



LCE12584-E01 GROUND, FIRST FLOOR POWER AND LUMINAIRE
ARRANGEMENT


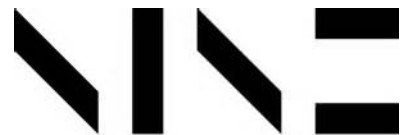
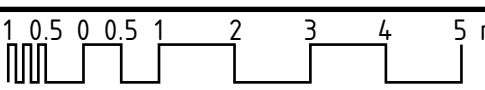
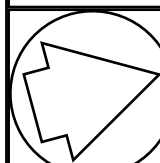
LCE12584-E02 SECOND AND THIRD FLOOR POWER AND LUMINAIRE
ARRANGEMENT

LCE12584-E03 ROOF PLAN AND SINGLE LINE DIAGRAM

LCE12584-E04 STANDARD DETAILS AND LEGEND OF SYMBOLS

1. COMPLETE WITH ALL RELEVANT CODES AND STATUTORY REQUIREMENTS IN PARTICULAR THE NATIONAL CONSTRUCTION CODE, AS3000, AS3008 AND AS2293 AND ALL REGULATORY AUTHORITIES REQUIREMENTS.
2. ELECTRICAL CONTRACTOR IS RESPONSIBLE FOR SUBMITTING SECTION J6 CHECKLIST TO CERTIFIER ONCE LUMINAIRE SELECTIONS ARE COMPLETE.
3. ELECTRICAL CONTRACTOR IS RESPONSIBLE FOR ALL NBN PATHWAY AND DRAWING SUBMISSIONS TO DESIGN APPROVAL BY NBN Co.
4. ELECTRICAL CONTRACTOR IS TO PROVIDE CONTROLLED SOCKET OUTLETS CONNECTED TO THE APARTMENT DB FOR ALL GENERAL, TOILET ENSUITE AND BOOSTER EXHAUST FANS. COORDINATE LOCATIONS WITH MECHANICAL CONTRACTOR.
5. ELECTRICAL CONTRACTOR IS TO PROVIDE INDIVIDUAL/SEPARATE ISOLATOR LOCATED AT THE LOCAL APARTMENT AIR CONDITIONING UNIT AND ASSOCIATED CABLEING BACK TO APARTMENT DB'S. FINAL CONNECTIONS AND TERMINATIONS TO BE PROVIDED BY THE MECHANICAL SERVICES CONTRACTOR. REFER TO MECHANICAL SERVICES ROOF ARRANGEMENT PLAN FOR UNIT LOCATIONS.
6. LIGHTING AND CABLE TRAY ARRANGEMENTS SHOWN ARE INDICATIVE. COORDINATE FINAL ARRANGEMENT WITH OTHER SERVICES AND BUILDING STRUCTURE PRIOR TO COMMENCEMENT OF WORK.
7. ENSURE LIGHTING MOTION SENSORS ARE INSTALLED FOR ALL COMMON AREAS 2m FROM ENTRANCE DOOR IF THE SPACE IS LESS THAN 2m. CENTRALISE MOTION SENSOR WITHIN CENTRE OF ROOM.
8. ELECTRICAL CONTRACTOR IS TO PROVIDE A SINGLE ISOLATOR POWER SUPPLY FOR AUTOMATIC ROLLER DOOR CONNECTED TO DISTRIBUTION BOARD LOCATED WITHIN THE MAIN SWITCHBOARD.
9. POWER SUPPLIES FOR ALL SERVICES TO BE COORDINATED ON SITE INCLUDING THE FINAL TERMINATION REQUIREMENTS.
10. ALL TOILET EXHAUST FANS ARE TO BE POWERED FROM GENERAL POWER OUTLET CIRCUIT WITHIN LOCAL CEILING SPACE AND POWERED OFF LOCAL LIGHTING CIRCUIT.

CONSTRUCTION ISSUE

| | | | | | | | | | |
|--|--------------------|--|--------------------------------|--|---------------------|--|----------|-------|--|
| | | | | | | | | | |
| | | | | | | | | | |
| | | | | | | | | | |
| | | | | | | | | | |
| | | | | | | | | | |
| A | CONSULTATION ISSUE | | | | | | 28.06.19 | LP | |
| REV'N | DESCRIPTION | | | | | | DATE | CHK'D | |
| <div><div></div><div><div>LUCID</div><div>CONSULTING AUSTRALIA</div><div>Level 3/169, Pirie St Adelaide SA 5000</div><div>Phone: (08) 8407 9700</div><div>Email: adelaide@lucidconsulting.com.au</div></div></div> | | | | | | | | | |
| <div><div></div><div><div>STUDIO NINE</div><div>ARCHITECTS</div></div></div> | | | | | | | | | |
| PROJECT | | | | | | | | | |
| 168 PROSPECT ROAD, PROSPECT SA | | | | | | | | | |
| DRAWING | | | | | | | | | |
| GROUND AND FIRST FLOOR POWER AND LUMINAIRE ARRANGEMENT, DRAWING INDEX AND GENERAL NOTES | | | | | | | | | |
| <div><div></div><div>SCALEBAR 1:100</div></div> | | | | | | | | | |
| SCALE 1:100 @ A1 | | | Size A1 | | ELECTRICAL SERVICES | | | | |
| DESIGNER MT | | | DRAWN MT/PY | | DATE JUNE 19 | | REV'N | | |
|  | | | DRAWING NUMBER LCE12584-E01 | | | | | A | |

© Copyright Lucid Consulting Australia