

**SOUTH AUSTRALIAN WATER CORPORATION : FLOW AND PRESSURE SURVEY**

Metering, Technical Services- Happy Valley

Maximo No 7179260

**TEST 1**

STREET ADDRESS	PROSPECT RD
SUBURB	PROSPECT
MAIN-SIZE& TYPE	200PVC/M
ZONE SUPPLY EL	
TEST DATE	28/10/2019

This advice and/or information is given for your private use only. The accuracy of the advice and/or information is not guaranteed and no responsibility is accepted by the Crown, the South Australian Water Corporation of their officers, agents of servants for any loss or damage caused by reliance upon this advice and/or information, as a result of any error, omission, misrepresenting therein whether caused by negligence or otherwise.

TEMP	19°C	TIME OF DAY 24hr	11:30	FIRE PLUG ID	8828740
------	------	------------------	-------	--------------	---------

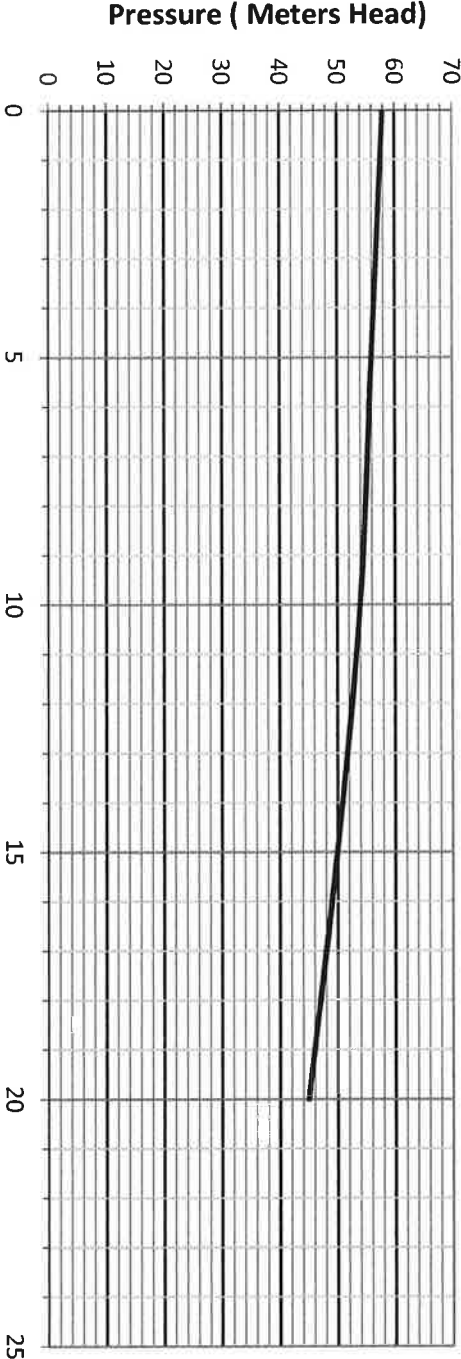


SA Water

**FLOW AND PRESSURE SURVEY**



Government of South Australia



THE TEST WAS TAKEN USING A SINGLE 65mm MCCROMETER METER, WITH THE PRESSURE AND FLOW TAKEN AT THE SAME POINT, USING A SINGLE FIRE PLUG OR PILLAR HYDRANT AS INDICATED.

STATIC PRESSURE-MH	58.0
--------------------	------

**RESULTS TAKEN FROM A MCCROMETER METER**

Flow rate in litres per second	Pressure in metres head
0	58
5.0	56
10.0	54
15.0	50
20.0	45

**PLEASE NOTE:**

WHEN INCORPORATING THESE TEST RESULTS IN THE DESIGN CALCULATIONS OF THE PRIVATE SERVICE PIPEWORK, ALLOWANCE SHOULD BE MADE FOR HYDRAULIC LOSSES BETWEEN THE POINTS AT WHICH THE TEST WAS CONDUCTED AND THE PROPERTY SERVICE LOCATION.  
THE CORPORATION ENDEAVOURS TO MAINTAIN A SATISFACTORY PRESSURE IN THE MAINS AT ALL TIMES, UNDER SOME CIRCUMSTANCES THIS MAY NOT BE POSSIBLE, THEREFORE NO GUARANTEE CAN BE GIVEN.

**Comments:**

AT A PRESSURE OF 200 kpa, THE FLOW WAS :	
approx 25 litres per second	

CONTACT NAME :	Lawrie McGing
TEST BY:	CHRISTIAN NAURATO
Phone Number :	408840117

SOUTH AUSTRALIAN WATER CORPORATION : FLOW AND PRESSURE SURVEY

Metering, Technical Services- Happy Valley

Maximo No 7179260

TEST 2

STREET ADDRESS	PROSPECT RD	This advice and/or information is given for your private use only. The accuracy of the advice and/or information is not guaranteed and no responsibility is accepted by the Crown, the South Australian Water Corporation of their officers, agents of servants for any loss or damage caused by reliance upon this advice and/or information, as a result of any error, omission, misrepresenting therein whether caused by negligence or otherwise.					
SUBURB	PROSPECT						
MAIN-SIZE& TYPE	200PVC						
ZONE SUPPLY EL							
TEST DATE	28/10/2019	TEMP	19°C	TIME OF DAY 24hr	11:55	FIRE PLUG ID	8828712

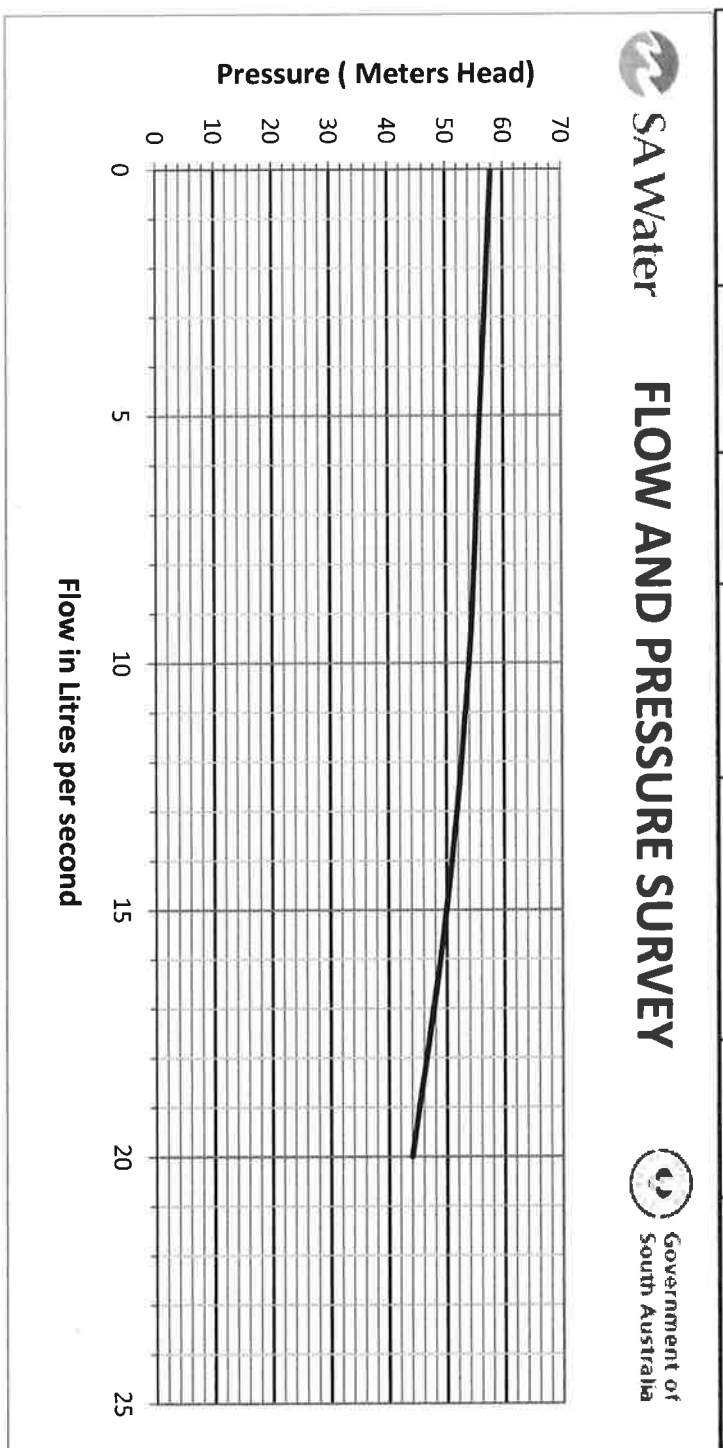


SA Water

FLOW AND PRESSURE SURVEY



Government of South Australia



THE TEST WAS TAKEN USING A SINGLE 65mm MCCROMETER METER, WITH THE PRESSURE AND FLOW TAKEN AT THE SAME POINT, USING A SINGLE FIRE PLUG OR PILLAR HYDRANT AS INDICATED.

STATIC PRESSURE-MH	58.0
--------------------	------

RESULTS TAKEN FROM A MCCROMETER METER	
Flow rate in litres per second	Pressure in metres head
0	58
5.0	56
10.0	54
15.0	50
20.0	44

AT A PRESSURE OF 200 kpa, THE FLOW WAS :

approx 25 litres per second

PLEASE NOTE:

WHEN INCORPORATING THESE TEST RESULTS IN THE DESIGN CALCULATIONS OF THE PRIVATE SERVICE PIPEWORK, ALLOWANCE SHOULD BE MADE FOR HYDRAULIC LOSSES BETWEEN THE POINTS AT WHICH THE TEST WAS CONDUCTED AND THE PROPERTY SERVICE LOCATION.  
THE CORPORATION ENDEAVOURS TO MAINTAIN A SATISFACTORY PRESSURE IN THE MAINS AT ALL TIMES, UNDER SOME CIRCUMSTANCES THIS MAY NOT BE POSSIBLE, THEREFORE NO GUARANTEE CAN BE GIVEN.

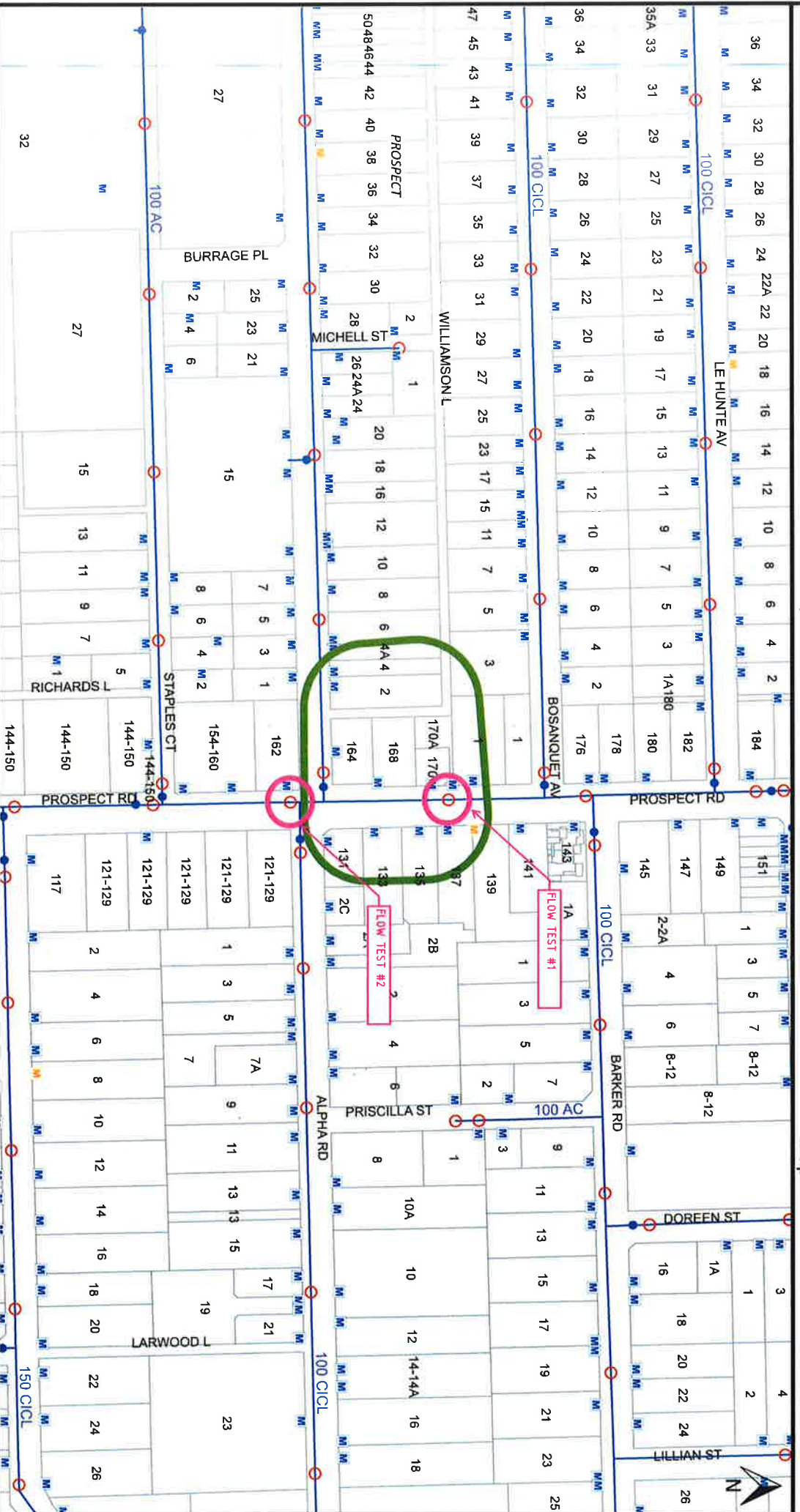
Comments:

CONTACT NAME :	Lawrie McGing
TEST BY:	CHRISTIAN NAURATO
Phone Number :	408840117

# South Australian Water Corporation WATER RETICULATION

DBYD Sequence No: 58241351

Map Tile: 1



- Water Valves
- Water Main
- Water Main (Decommissioned)
- Decommissioned Asbestos Mains

- Water Pillar Hydrant
- Water Hydrant
- CP Facility
- CP = Cathodic Protection

- CP Anode/Cathode Cables
- CP Electricity Supply Cables
- CP Anode Bed Outlines

- Railway
- Land Parcels
- Water Meter\*
- Shifted Water Meter\*

This advice and/or information is given for your private use only. The accuracy of the advice and information is not guaranteed and no responsibility is accepted by the crown, the South Australian Water Corporation or their officers, agents or servants for any loss or damage caused by reliance upon this advice and/or information, as a result of any error, omission, incorrect description or statement therein whether caused by negligence or otherwise.

Scale @ A4: 1:2500