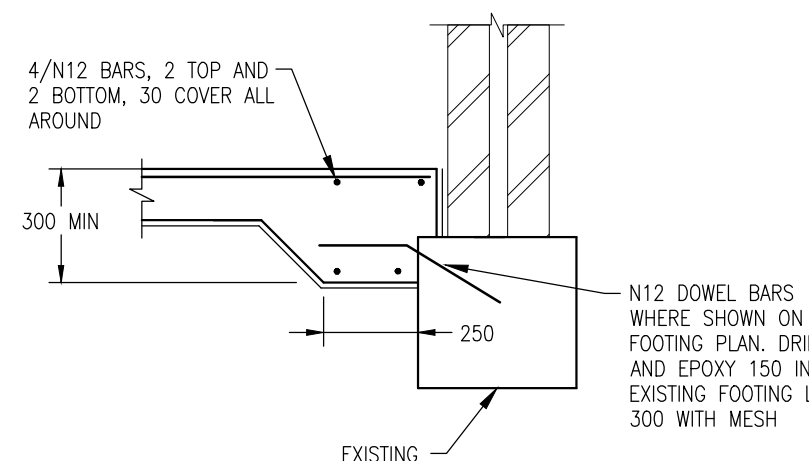
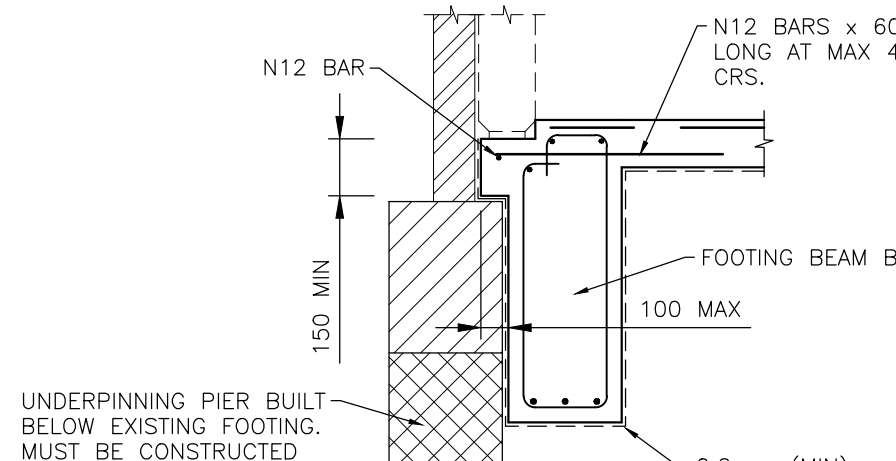


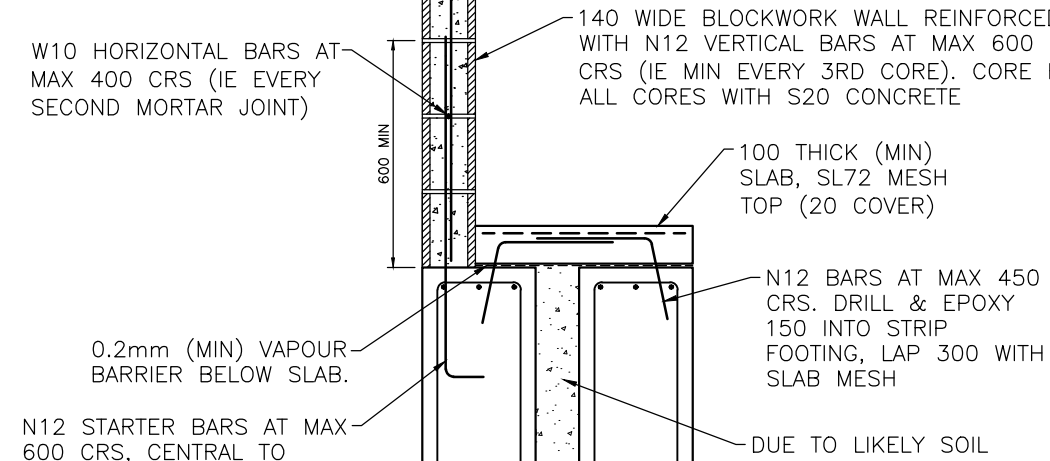
EDGE THICKENING DETAIL (et)



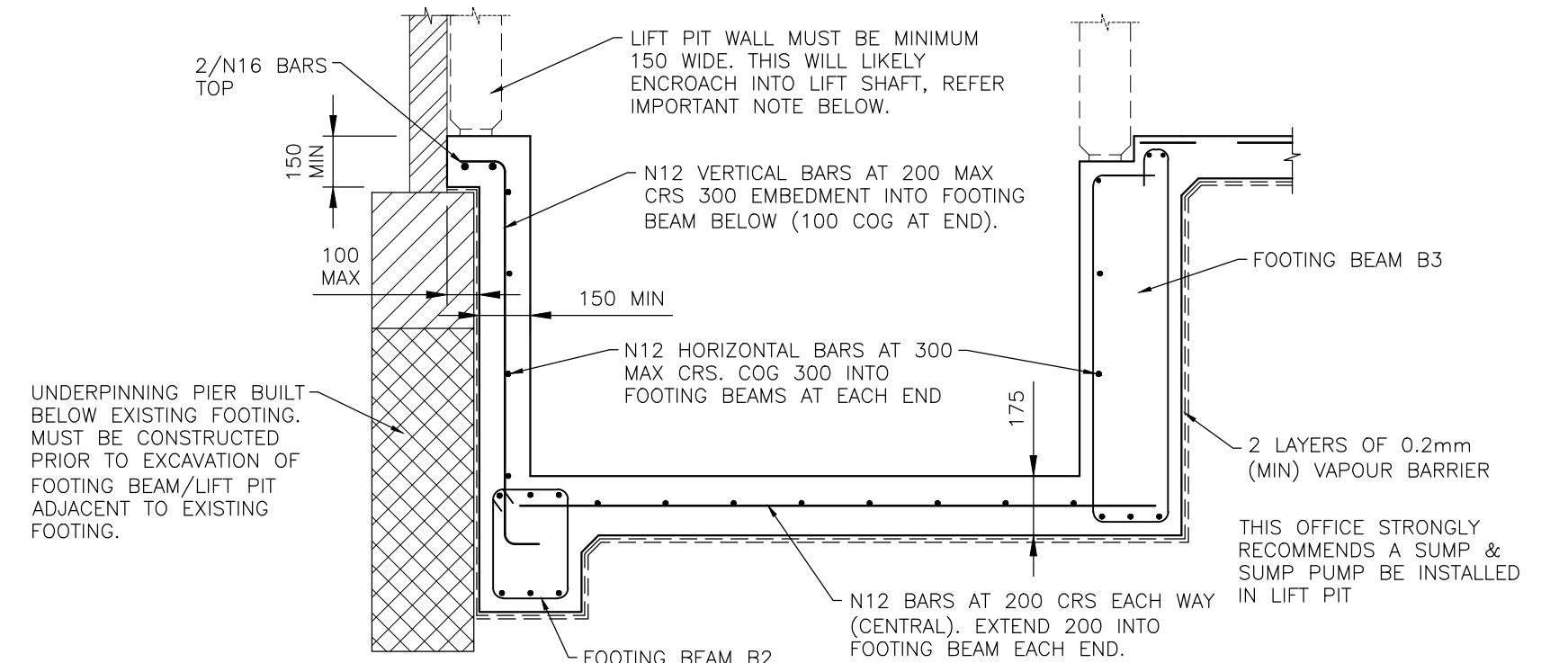
EDGE THICKENING DETAIL (et2)



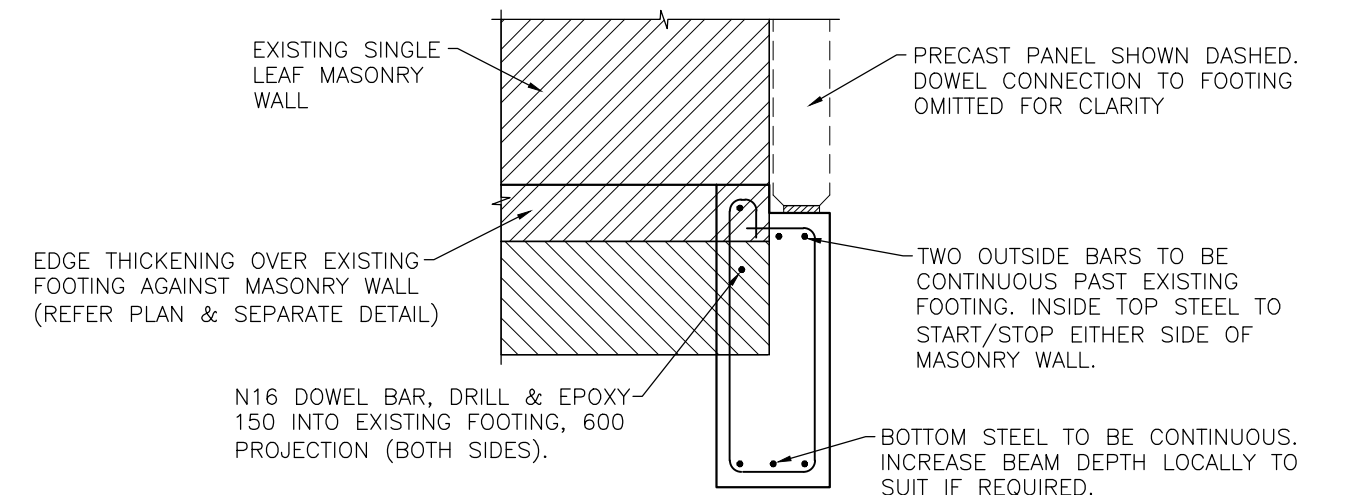
SECTION  
SCALE 1:20



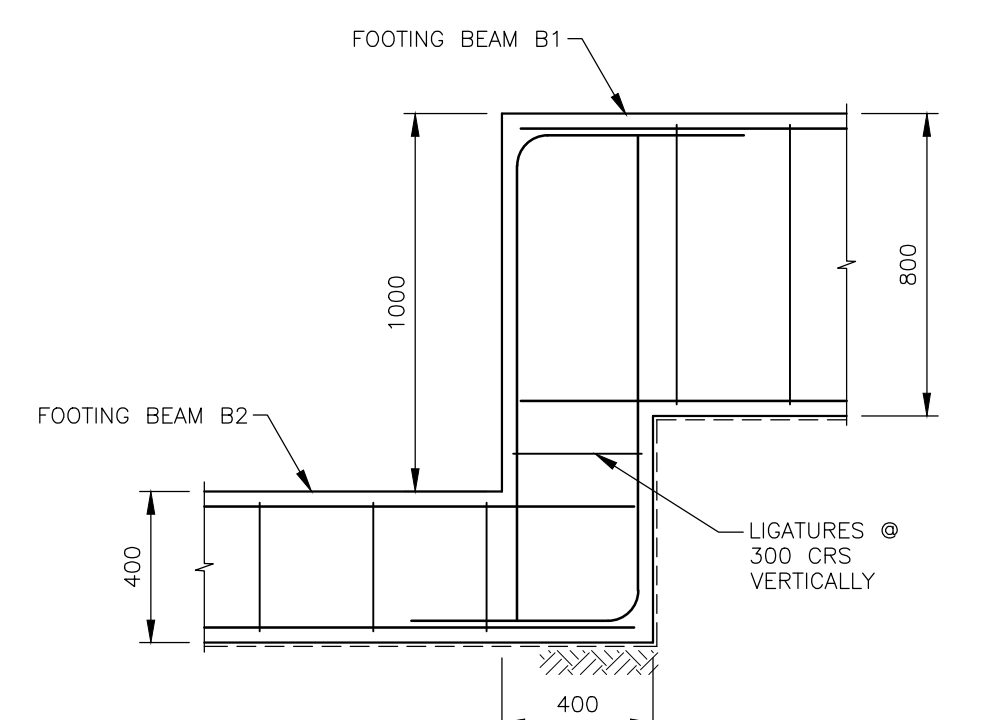
X1 SECTION  
- SCALE 1:20



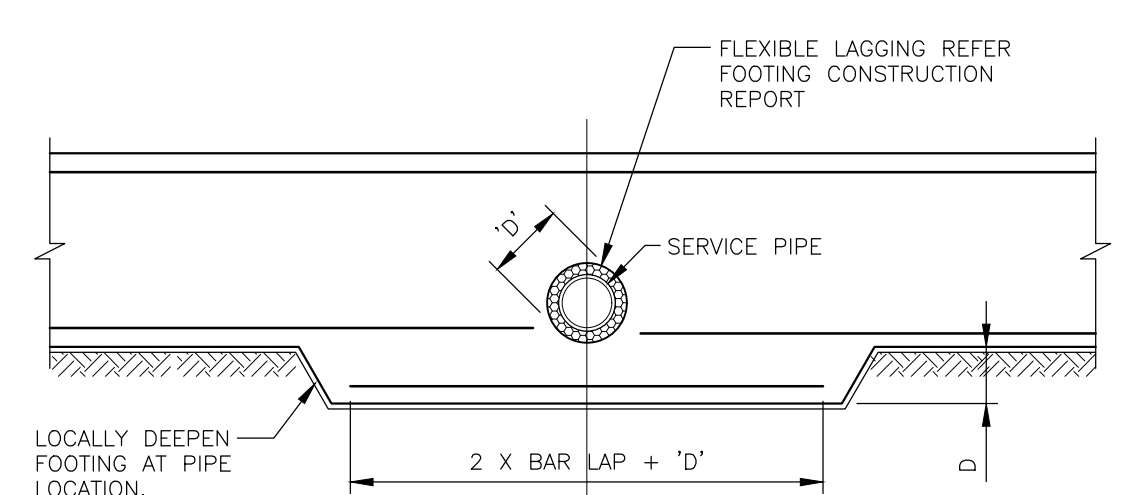
Y SECTION  
SCALE 1:20



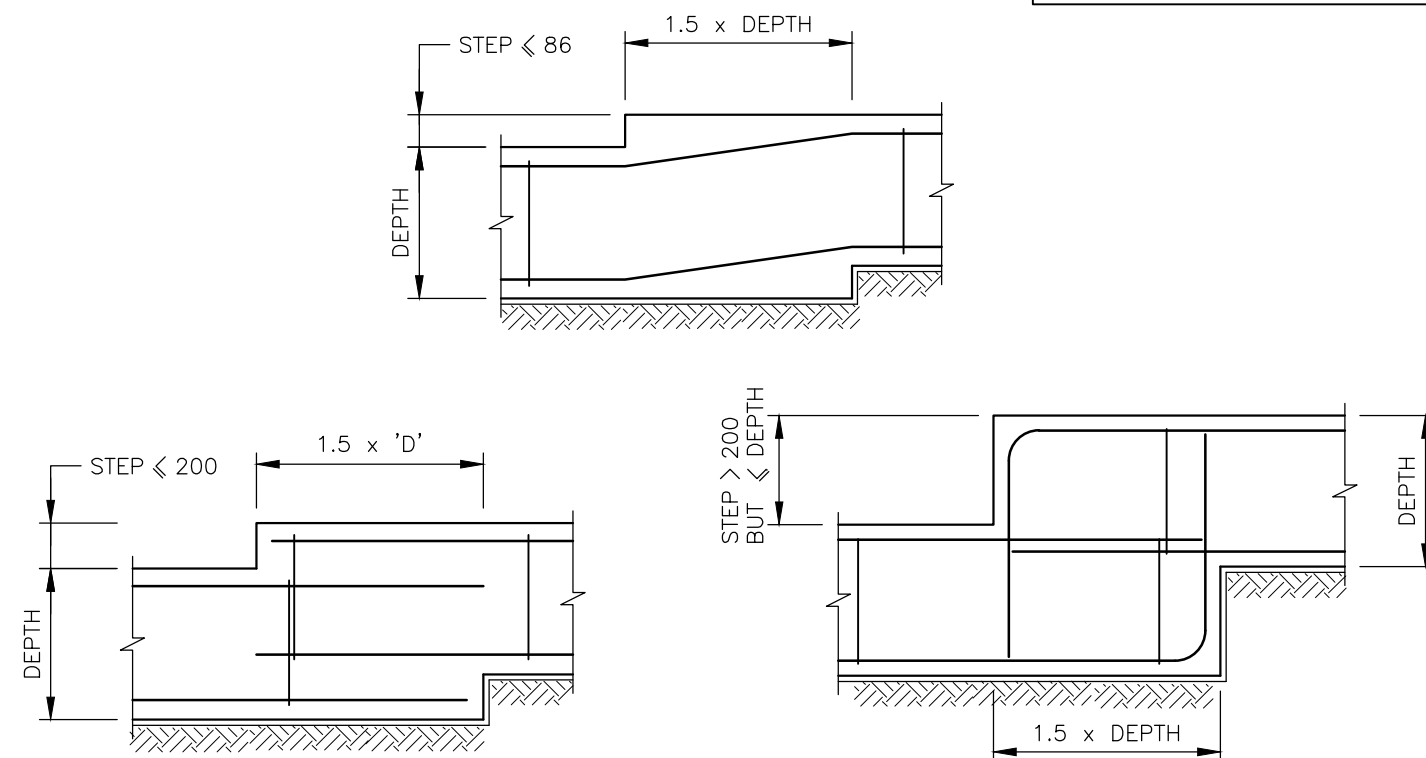
SECTION  
SCALE 1:20



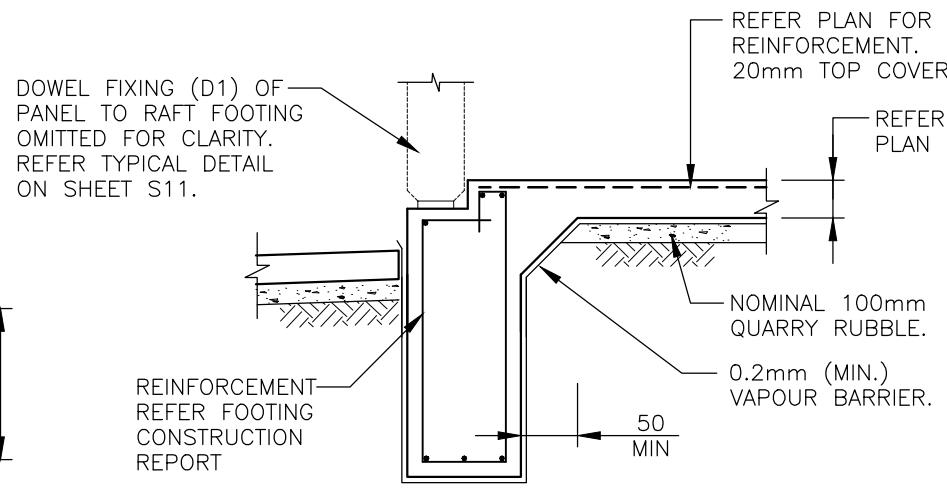
DROP PIER  
N.T.S



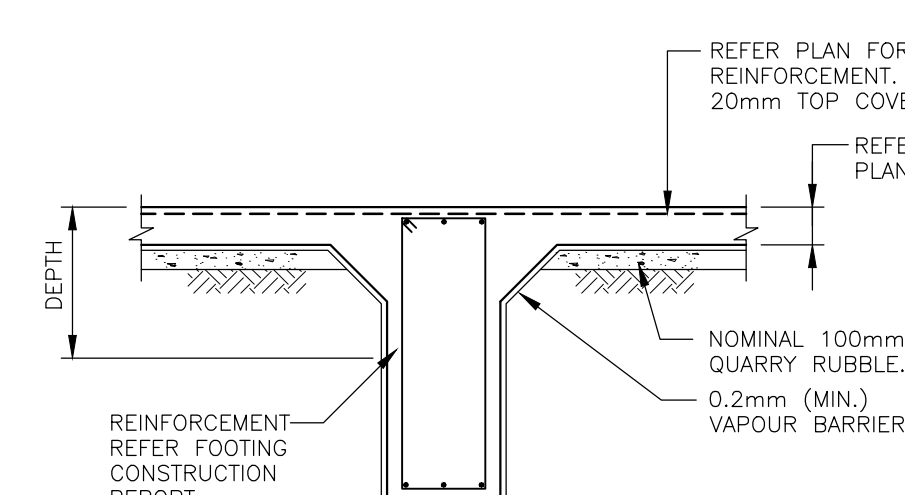
PIPE PENETRATION THROUGH FOOTING  
N.T.S



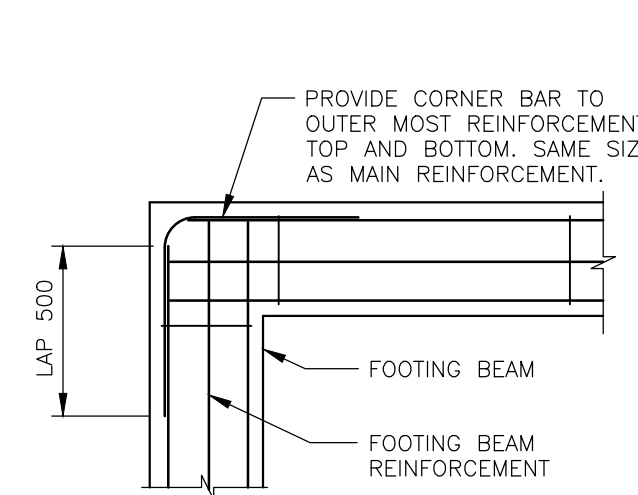
TYPICAL STEPPED FOOTING DETAILS  
N.T.S



TYPICAL EXTERNAL FOOTING  
(75mm MAXIMUM REBATE)  
N.T.S



TYPICAL INTERNAL FOOTING  
N.T.S



FOOTING BEAM CORNER DETAIL  
N.T.S.



PROJECT NORTH

PROJECT	PROPOSED OFFICE & APARTMENT DEVELOPMENT BERT FARINA CONSTRUCTIONS
ADDRESS	NO. 147 MARION ROAD RICHMOND, S.A

ADDRESS NO. 147 MARION ROAD  
RICHMOND, S.A.

SHEET TITLE

FOOTING PLAN

[illegible]

**Residential  
Commercial  
Industrial  
Consulting Engineers**

1 Hawke Street  
ALBERT PARK, SA 5014  
P (08) 8241 2326  
F (08) 8241 2409  
admin@rciconsulting.com.au  
www.rciconsulting.com.au

© This drawing is copyright to RCI Consulting Engineers, no part of this drawing shall be used for any other purpose nor by a third party without the prior written consent of RCI Consulting Engineers.

© This drawing is copyright to RCI Consulting Engineers, no part of this drawing should be used for any other purpose nor by a third party without the prior written consent of RCI Consulting Engineers.

PROJECT	PROPOSED OFFICE & APARTMENT DEVELOPMENT BERT FARINA CONSTRUCTIONS
ADDRESS	NO. 147 MARION ROAD RICHMOND, S.A

SHEET TITLE

FOOTING PLAN

DESIGN	T.H.	DATE	12-May-16
DRAWN	B.B.	SCALE	1:100 UNO
REF. NO	SHEET NO		
S17799	S2 REV. F		