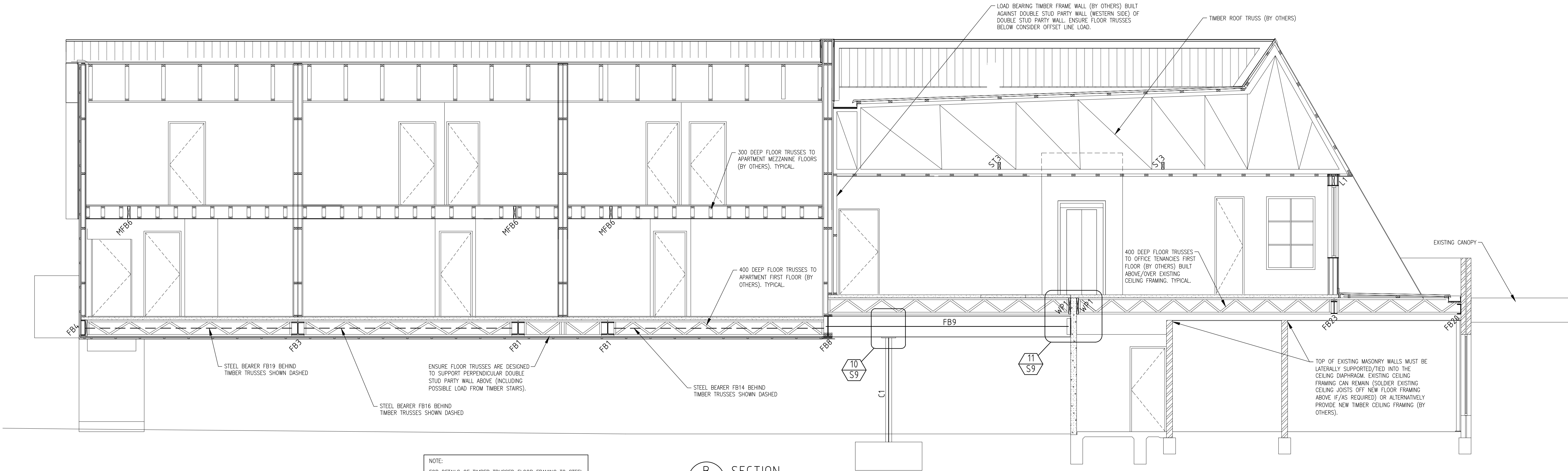


A SECTION
S3 SCALE 1:50



NOTE:
FOR DETAILS OF TIMBER TRUSSED FLOOR FRAMING TO STEEL BEARERS, REFER TO TYPICAL DETAILS ON SHEET S11.

B SECTION
S3 SCALE 1:50

E.	GENERAL REVISION / ISSUED FOR BRC	21.04.17	B.B.				
D.	SECTIONS UPDATED TO SUIT NEW MEZ FLOOR SHAPE/SIZE	12.04.17	B.B.				
C.	REVISED ENGINEERING TO SUIT NEW ARCHITECTURAL DRAWINGS	31.03.17	B.B.				
B.	SECTION A UPDATED	22.07.16	B.B.	G.	UPDATED TO SUIT REVISED ARCHITECTURAL PLANS	09.04.18	B.B.
A.	STRUT ST2 ADDED / GENERAL REVISION	09.06.16	T.H.	F.	SOUTHERN BALCONY AMENDED	18.12.17	B.B.
NO	AMENDMENT	DATE	INITIAL	NO	AMENDMENT	DATE	INITIAL

Residential Commercial Industrial Consulting Engineers
A.B.N. 17 131 375 356

1 Hawke Street
ALBERT PARK, SA 5014
P (08) 8241 2326
F (08) 8241 2409
admin@rciconsulting.com.au
www.rciconsulting.com.au
© This drawing is copyright to RC Consulting Engineers, no part of this drawing shall be used for any other purpose not by any other third party without the prior written consent of RC Consulting Engineers.

PROJECT
PROPOSED OFFICE & APARTMENT DEVELOPMENT
BERT FARINA CONSTRUCTIONS
ADDRESS
NO. 147 MARION ROAD
RICHMOND, S.A

SHEET TITLE
SECTIONS 1

DESIGN	T.H.	DATE	12-May-16
DRAWN	B.B.	SCALE	1:100 UNO
REF. NO	S17799	SHEET NO	S5 REV. G